

REFERENCE PHOTOS
BRINGELSON 20-44-9-58 Pad

Reference Location
NWSE Sec. 20 Twn. 9N Rng. 58W 6th PM
Lat: 40.73521 Long: -103.88753

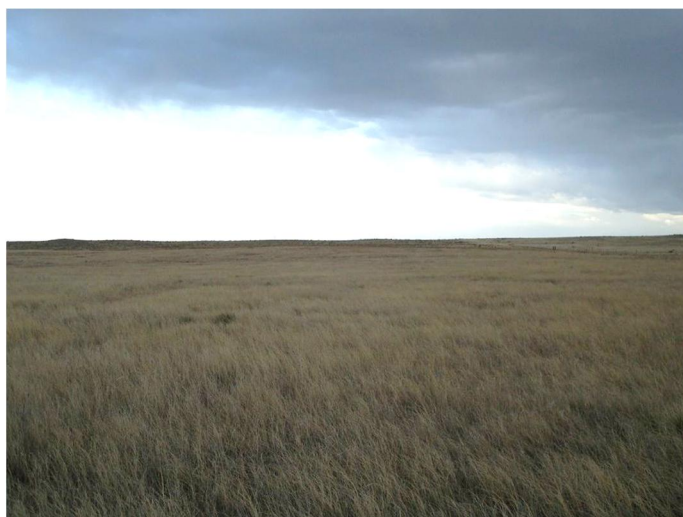
Carrizo Oil & Gas, Inc
Weld County, CO
Date of Pictures: 5/10/2011



NORTH



EAST



SOUTH



WEST



GEOSURV Inc. 520 Stacy CT Suite B Lafayette CO 80026 ph 303 666 0379 fx 303 665 6320

G:\GEOSURV\WeldzNorth\Carrizo 110004\Wellplats\Bringelson 20-44-9-58\Photos\Bringelson 20-44-9-58 Ref Photos.docx 5/12/2011 4:09:00 PM