

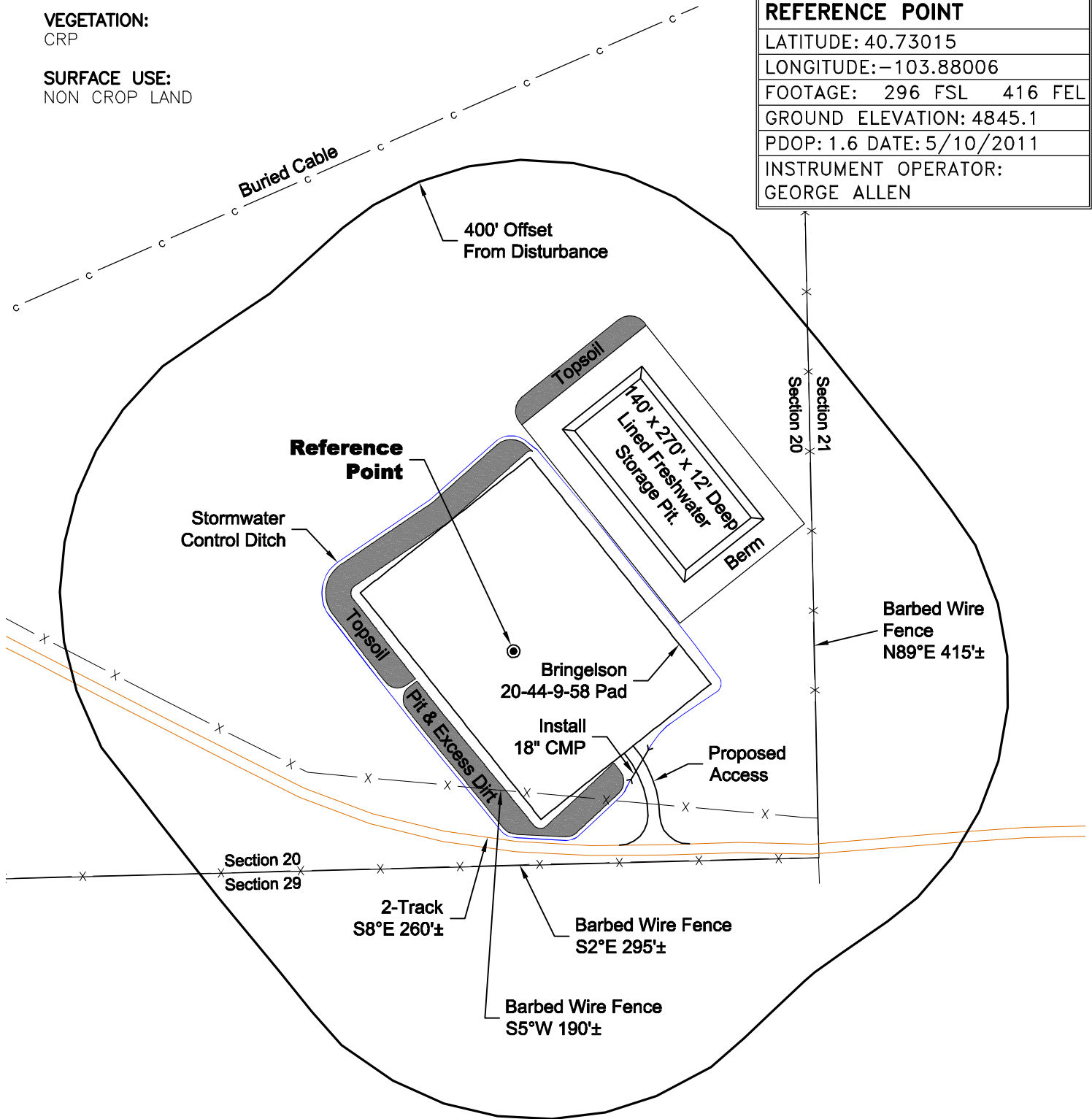
LOCATION DRAWING

VEGETATION:
CRP

SURFACE USE:
NON CROP LAND

REFERENCE POINT

LATITUDE: 40.73015
LONGITUDE: -103.88006
FOOTAGE: 296 FSL 416 FEL
GROUND ELEVATION: 4845.1
PDOP: 1.6 DATE: 5/10/2011
INSTRUMENT OPERATOR: GEORGE ALLEN



DISTURBANCE ACREAGE:
4.2± DRILLING OPERATIONS
2.0± FRESHWATER STORAGE PIT
1.0± INTERIM RECLAIM

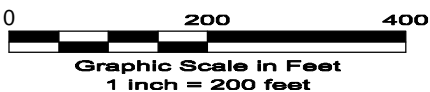
NOTE:

ALL PRODUCTION FACILITIES WILL BE ON PAD.

5/25/11



North



LAND SURVEYING AND MAPPING
LAFAYETTE - WINTER PARK
Ph 303 666 0379 Fx 303 665 6320

CARRIZO OIL & GAS, INC
BRINGELSON 20-44-9-58 PAD

SE1/4 SE1/4 SEC. 20 T9N R58W
6th PM WELD COUNTY COLORADO