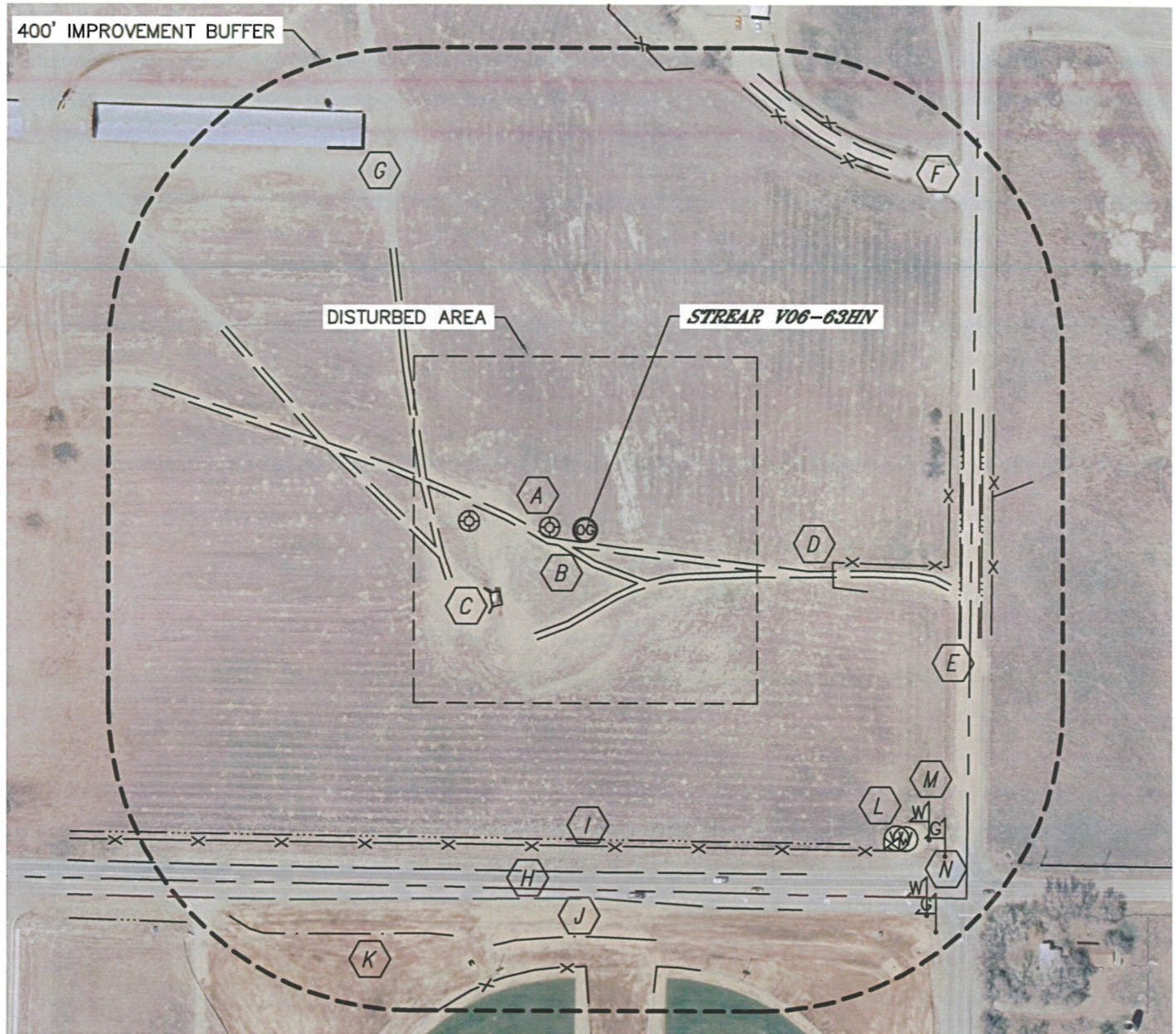


## LOCATION DRAWING

STREAR V06-63HN

SECTION: 6  
TOWNSHIP: 2N  
RANGE: 67W



### IMPROVEMENTS:

- |   |   |
|---|---|
| <b>A</b> EX. WELL 47' & 153' W  | <b>H</b> COUNTY ROAD 24 444' S              |
| <b>B</b> FIELD ROAD 16' S, 188' W   | <b>I</b> BARROW DITCH 402' S, 491' & 520' E |
| <b>C</b> LOADING DOCK 138' SW   | <b>J</b> DITCH 529' S                       |
| <b>D</b> FENCE 326', 476' & 533' E, 410' S,<br>567' & 575' S (BALL FIELDS), 586' & 606' N | <b>K</b> DETENTION POND 555' SW             |
| <b>E</b> COUNTY ROAD 15 494' E  | <b>L</b> WATER MANHOLE AND VALVE 571' SE    |
| <b>F</b> DRIVEWAY 595' NE   | <b>M</b> WATERLINE MARKER 604' & 670' SE    |
| <b>G</b> BUILDING 574' NW   | <b>N</b> GASLINE MARKER 633' & 694' SE      |

NEAREST: BUILDING 574' NW, PUBLIC ROAD 444' S (CR 24),  
ABOVE GROUND UTILITY 738' SE, RAILROAD 1790' NW (ABANDONED), PROPERTY LINE 468' S

