

Well Location Plat

SAMSON RESOURCES COMPANY
INDIAN MESA 32-7-11 #1
180' FSL & 2145' FEL
Sec. 11 T32N, R7W, NMPM
La Plata Co., CO

Ground Elev. 6306.4 (NGVD 29)
(Southern Ute B-10 NE SE Sec. 10= 6223.7 gr.)

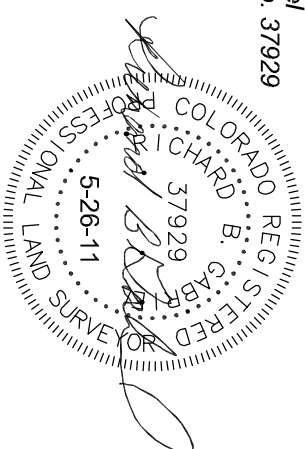
Lat. 37.02486° N
Long. 107.57604° W (NAD 83)

Field Completion Date: 28 Dec 2010
Plat Date: 18 Jan 2011

Non-crop Pasture
Improvements on Sheet 2

This is to certify that this plat was prepared from field notes of actual surveys made by me, or under my supervision, and that the same are true and correct to the best of my knowledge and belief.

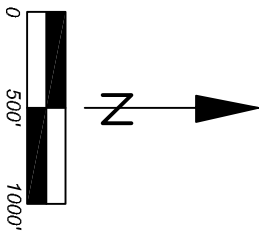
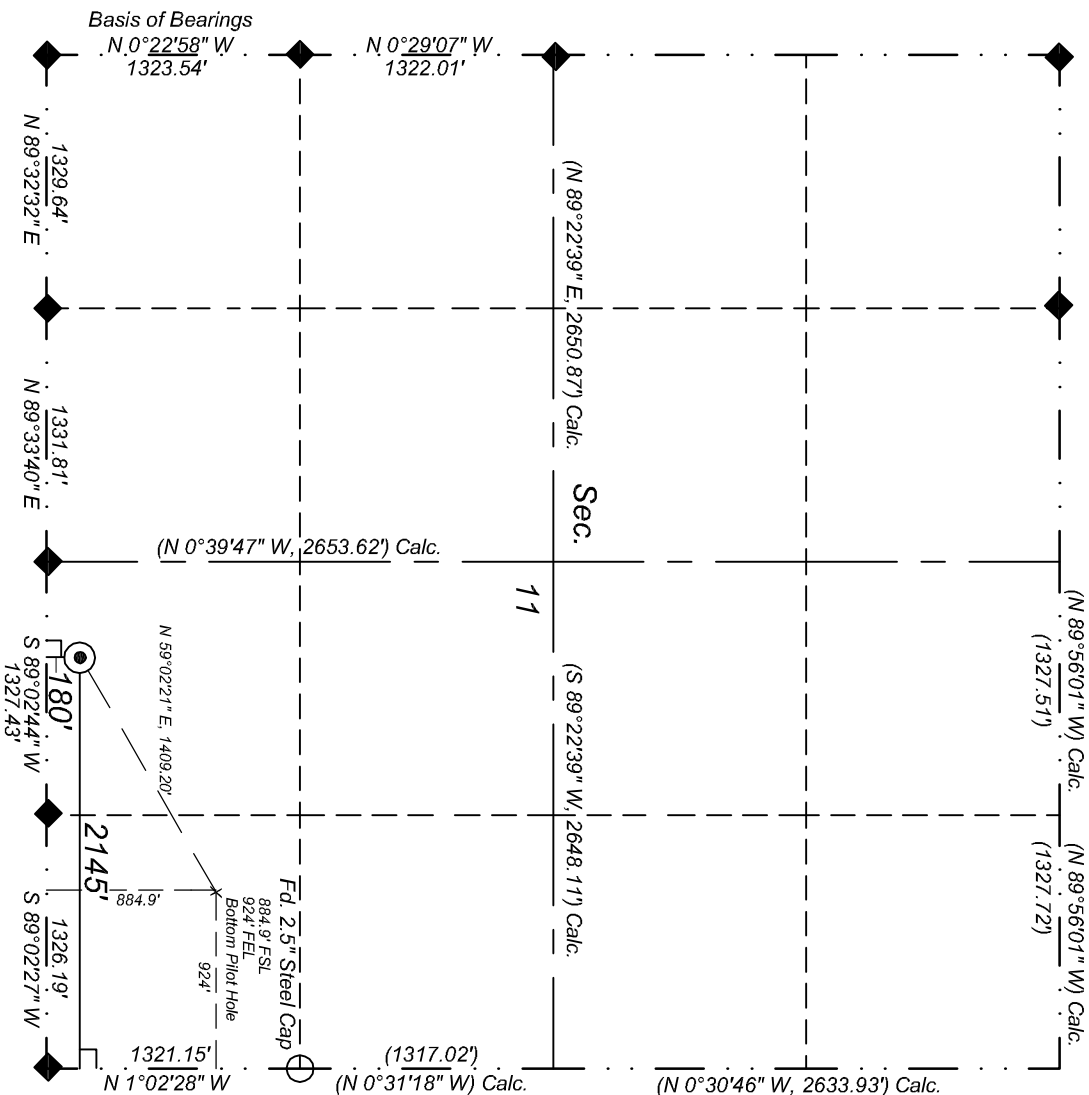
Richard B. Gabriel
Colorado PLS No. 37929



E

ENERGY SURVEYORS, INC.

P.O. BOX 991
FAIRMINGTON, NM 87499
OFFICE: 505-325-4005
CELL: 505-360-8142
FAX: 801-659-4246



Rev. 26 May 2011
Rev. 18 Jan 2011