

LOCATION DRAWING

REFERENCE POINT

LATITUDE: 40.59761

LONGITUDE: -104.08912

FOOTAGE: 240 FSL 240 FEL

GROUND ELEVATION: 4919.9

PDOP: 2.0 DATE: 3/2/2011

INSTRUMENT OPERATOR:

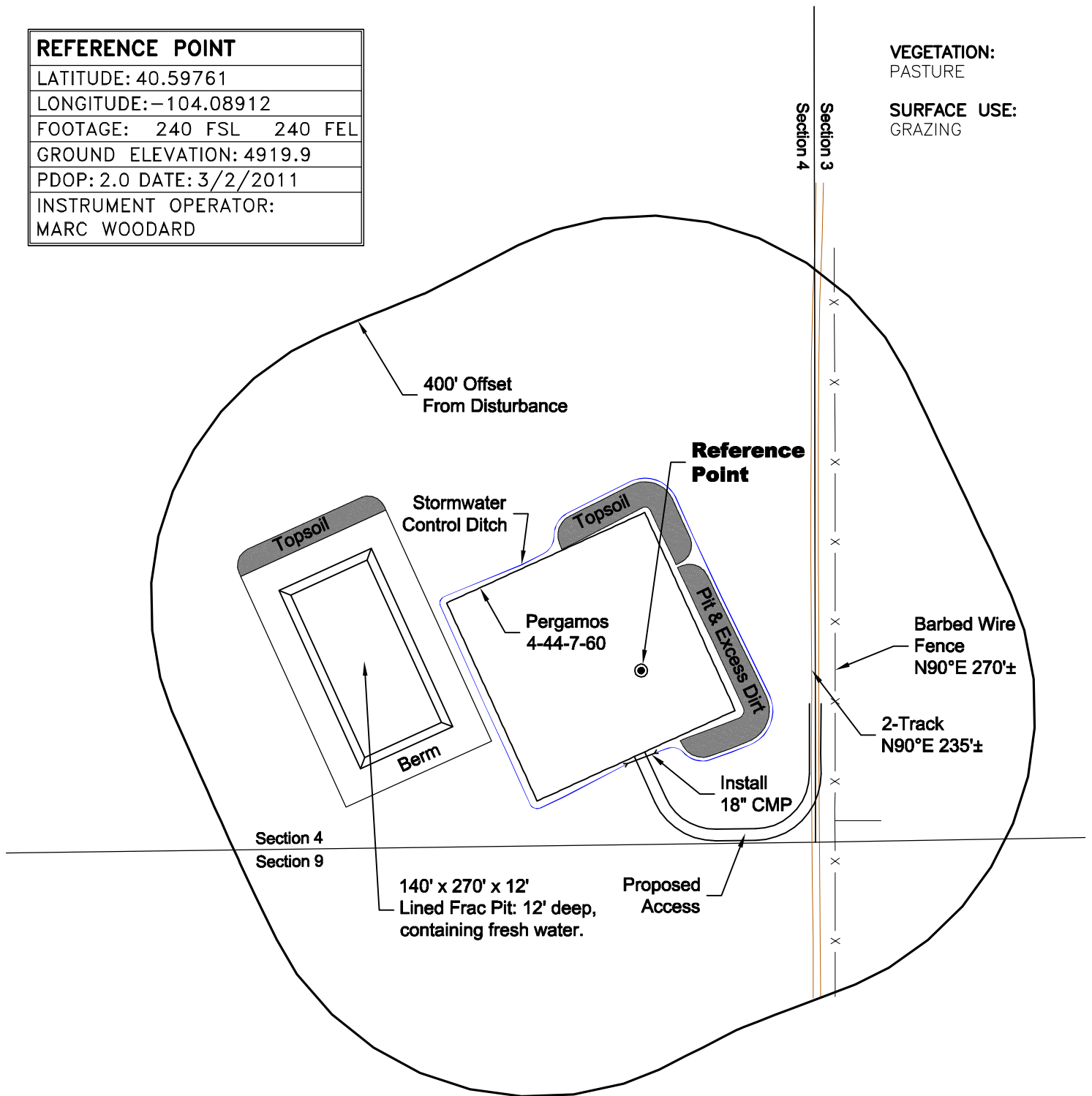
MARC WOODARD

VEGETATION:

PASTURE

SURFACE USE:

GRAZING



NOTE:

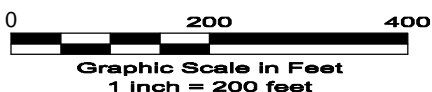
ALL PRODUCTION FACILITIES WILL BE ON PAD.

DISTURBANCE ACREAGE:
3.1± DRILLING OPERATIONS
2.0± FRAC PIT
1.0± INTERIM RECLAIM

3/21/11



North



LAND SURVEYING AND MAPPING
LAFAYETTE - WINTER PARK
Ph 303 666 0379 Fx 303 665 6320

CARRIZO OIL & GAS, INC
PERGAMOS 4-44-7-60 PAD

SE1/4 SE1/4 SEC. 4 T7N R60W
6th PM WELD COUNTY COLORADO