

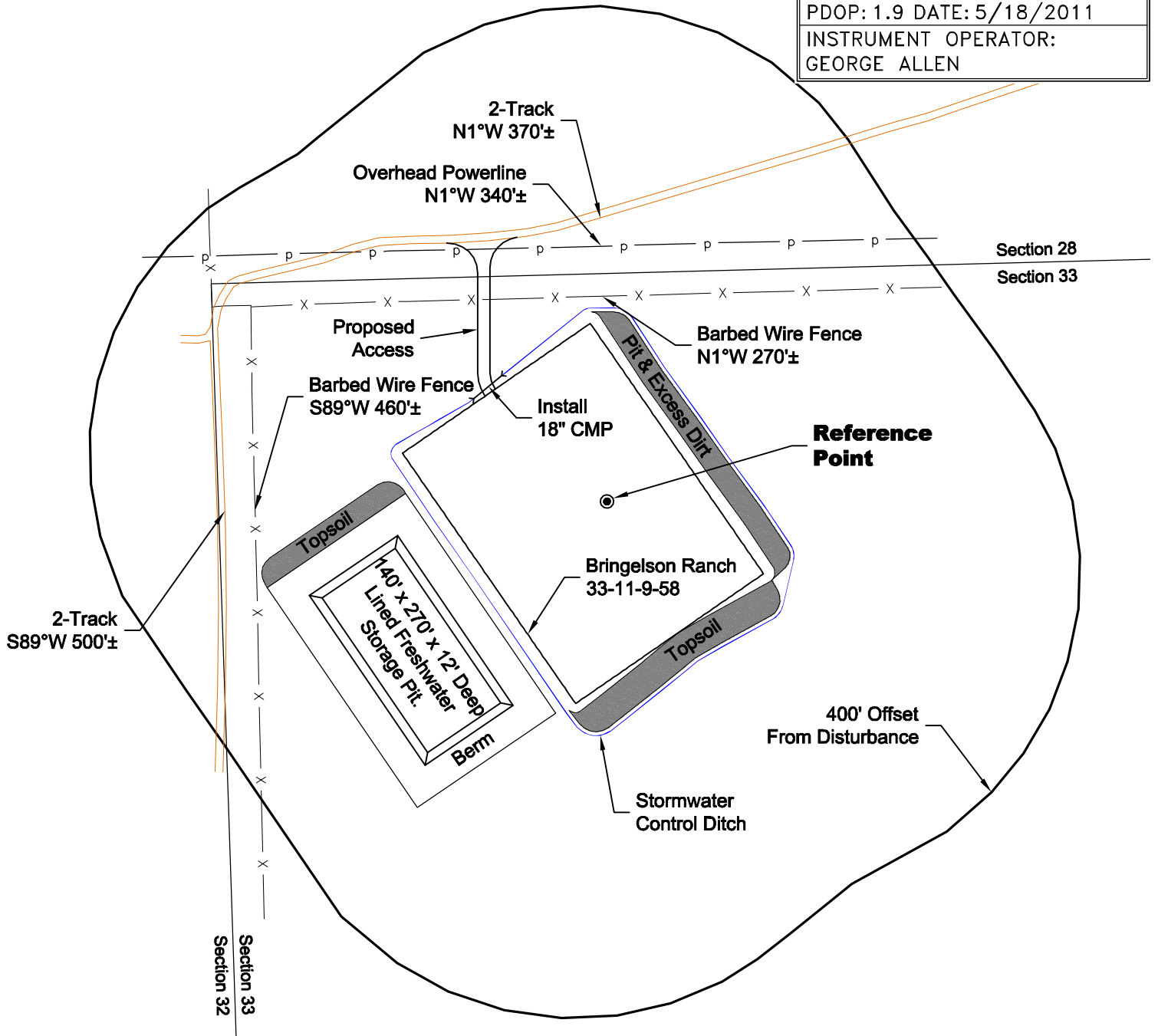
LOCATION DRAWING

VEGETATION:
DRY LAND PASTURE

SURFACE USE:
GRAZING

REFERENCE POINT

LATITUDE: 40.71396
LONGITUDE: -103.87659
FOOTAGE: 299 FNL 510 FWL
GROUND ELEVATION: 4772.1
PDOP: 1.9 DATE: 5/18/2011
INSTRUMENT OPERATOR: GEORGE ALLEN



DISTURBANCE ACREAGE:
4.0± DRILLING OPERATIONS
2.0± FRESHWATER STORAGE PIT
1.0± INTERIM RECLAIM

NOTE:

ALL PRODUCTION FACILITIES WILL BE ON PAD.

5/23/11



0 200 400

Graphic Scale in Feet
1 inch = 200 feet

GEO SURV

LAND SURVEYING AND MAPPING
LAFAYETTE - WINTER PARK
Ph 303 666 0379 Fx 303 665 6320

CARRIZO OIL & GAS, INC
BRINGELSON RANCH 33-11-9-58 PAD

NW1/4 NW1/4 SEC. 33 T9N R58W
6th PM WELD COUNTY COLORADO