

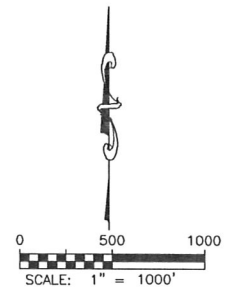
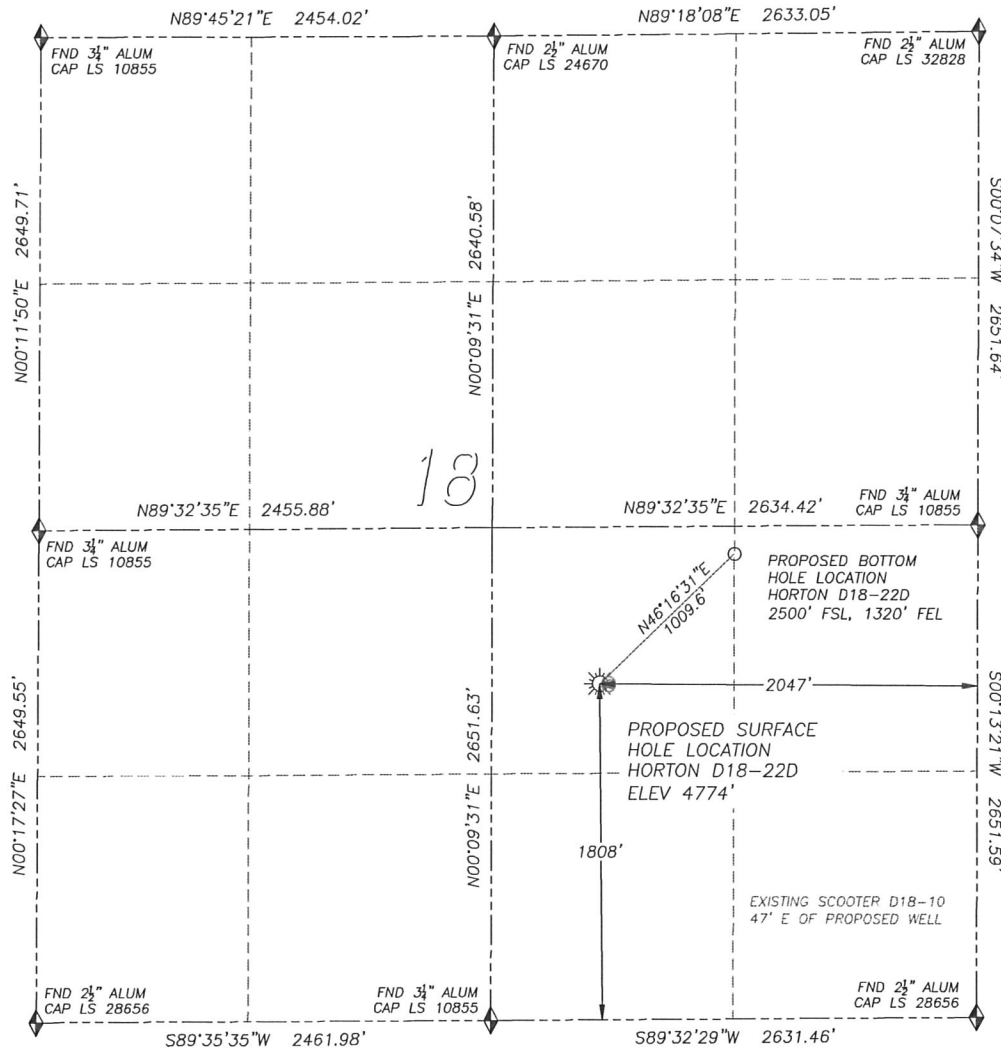
DALEY LAND SURVEYING, INC.

PARKER, CO. 80134

303 953 9841

WELL LOCATION CERTIFICATE HORTON D18-22D

SECTION 18, TOWNSHIP 3 NORTH, RANGE 64 WEST OF THE 6TH PRINCIPAL MERIDIAN



LEGEND

- ◆ FOUND MONUMENT AS DESCRIBED
- ☼ PROPOSED WELL
- EXISTING WELL
- BOTTOM HOLE
- ⊙ ABANDONED WELL

NAD 83 LATITUDE AND LONGITUDE

HORTON D18-22D SURFACE HOLE:

LATITUDE: N40.22297°
 LONGITUDE: W104.59174°
 ELEVATION: 4774'
 FOOTAGE: 1808' FSL, 2047' FEL
 PDOP: 1.5
 QTR/QTR: NW4/SE4
 PROP LINE: 586'± WEST

BOTTOM HOLE:

LATITUDE: N40.22489°
 LONGITUDE: W104.58913°
 FOOTAGE: 2500' FSL, 1320' FEL

NEAREST EXISTING WELL:

SCOOTER D18-10 SURFACE HOLE
 LATITUDE: N40.22296°
 LONGITUDE: W104.59157°
 ELEVATION: 4774'
 47' EAST

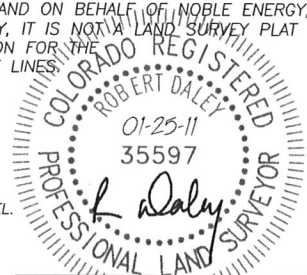
IN ACCORDANCE WITH A REQUEST FROM CJ PIETRI OF NOBLE ENERGY INC., DALEY LAND SURVEYING, INC. HAS DETERMINED THE SURFACE LOCATION OF THE HORTON D18-22D WELL TO BE 1808' FSL, 2047' FEL, AS MEASURED AT NINETY (90) DEGREES FROM THE SECTION LINES OF SECTION 18, TOWNSHIP 3 NORTH, RANGE 64 WEST OF THE 6TH PRINCIPAL MERIDIAN, WELD COUNTY, COLORADO. THE BOTTOM HOLE LOCATION, PROVIDED BY THE CLIENT, IS TO BE 2500' FSL, 1320' FEL.

I HEREBY CERTIFY THAT THIS WELL LOCATION CERTIFICATE WAS PREPARED BY ME OR UNDER MY DIRECT SUPERVISION, THAT THE WORK WAS COMPLETED ON 1/24/2011 FOR AND ON BEHALF OF NOBLE ENERGY, INC., AND THAT THIS MAP DOES NOT REPRESENT A BOUNDARY SURVEY, IT IS NOT A LAND SURVEY PLAT OR AN IMPROVEMENT SURVEY PLAT AND IT IS NOT TO BE RELIED UPON FOR THE ESTABLISHMENT OF FENCE, BUILDING OR OTHER FUTURE IMPROVEMENT LINES.

NOTES:

- 1) BEARINGS FOR THIS MAP ARE ASSUMED AND BASED UPON GPS OBSERVATIONS MADE BETWEEN MONUMENTS LOCATED AT THE SOUTHEAST CORNER AND EAST QUARTER CORNER OF SECTION 18, T.3N., R.64W.
- 2) HORIZONTAL DATUM IS NAD83.
- 3) VERTICAL DATUM IS NAVD88. ELEVATIONS ARE DERIVED FROM GPS OBSERVATIONS PROCESSED THROUGH OPUS, UTILIZING THE GEOID03 MODEL.
- 4) SEE LOCATION DRAWING FOR VISIBLE IMPROVEMENTS WITHIN 600' OF PROPOSED SURFACE HOLE LOCATION.
- 5) SURFACE USE: PASTURE.

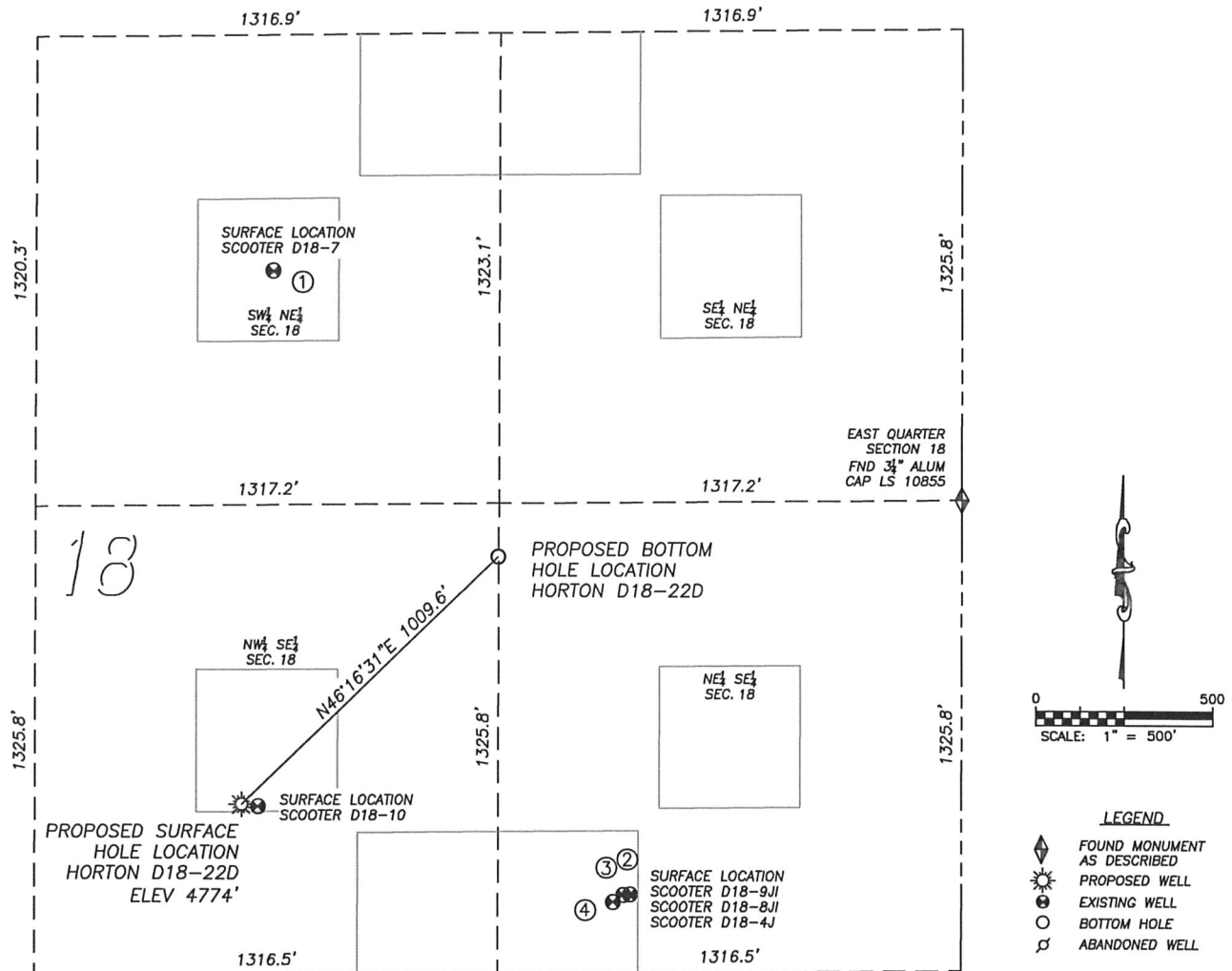
NOTICE: According to Colorado law you MUST commence any legal action based upon any defect in this W.L.C. within three years after you first discover such defect. In no event may any action based upon any such defect in this W.L.C. be commenced more than ten years from the date of the certification shown herein.



FOR AND ON BEHALF OF
 DALEY LAND SURVEYING INC.,
 Robert Daley, PLS 35597

SITE SKETCH HORTON D18-22D

SECTION 18, TOWNSHIP 3 NORTH, RANGE 64 WEST OF THE 6TH PRINCIPAL MERIDIAN



- ① SCOOTER D18-7
SW/NE SEC. 18
1985' FNL, 1961' FEL
1027' NW OF PROPOSED
BOTTOM HOLE LOCATION
LAT. N40.22710'
LONG. W104.59141'
EL: 4797'
PDOP 2.2

② SCOOTER D18-9J1
NE/SE SEC. 18
1547' FSL, 941' FEL
1022' SE OF PROPOSED
BOTTOM HOLE LOCATION
LAT. N40.22228'
LONG. W104.58778'
EL: 4767'
PDOP 2.0

③ SCOOTER D18-8J1
NE/SE SEC. 18
1546' FSL, 959' FEL
1016' SE OF PROPOSED
BOTTOM HOLE LOCATION
LAT. N40.22228'
LONG. W104.58785'
EL: 4767'
PDOP 2.0

④ SCOOTER D18-4J
NE/SE SEC. 18
1526' FSL, 989' FEL
1025' SE OF PROPOSED
BOTTOM HOLE LOCATION
LAT. N40.22222'
LONG. W104.58795'
EL: 4767'
PDOP 2.0

⑤ SCOOTER D18-10J
NW/SE SEC. 18
1802' FSL, 2000' FEL
980' SW OF PROPOSED
BOTTOM HOLE LOCATION
LAT. N40.22296'
LONG. W104.59157'
EL: 4774'
PDOP 1.5

NOTES:
1) THIS DOES NOT REPRESENT A
BOUNDARY SURVEY
2) THE LATITUDES AND LONGITUDES
SHOWN ARE REFERENCED TO
NAD83
3) DATUM FOR ELEVATION IS NAVD88.
ELEVATIONS ARE DERIVED FROM
GPS-RTK OBSERVATIONS
PROCESSED THROUGH OPUS,
UTILIZING THE GEOID03 MODEL

