

Company - **Chesapeake Energy**  
 Well - **State 10-67 28 1H**  
 Date - **4/28/2011**



Ported sub to Coil		1.65	Top Shot				<b>Odometer</b>
			<b>11,697</b>	1.65			<b>11,695</b>
3 1/8" Tag Gun	# 4	1.5	9h				<b>Gun # 4</b>
			<b>11,698.50</b>				
6 Min Time Delay		2					
CT Sub		0.54	Top Shot				
			<b>11,733</b>	5.69			<b>11,727</b>
3 1/8" Tag Gun	# 3	1.5	9h				<b>Gun # 3</b>
			<b>11,734.50</b>				
6 Min Time Delay		2					
CT Sub		0.54	Top Shot				
			<b>11,766</b>	9.73			<b>11,756</b>
3 1/8" Tag Gun	# 2	1.5	9h				<b>Gun # 2</b>
			<b>11,767.50</b>				
6 Min Time Delay		2					
CT Sub		0.54	Top Shot				
			<b>11,819</b>	13.77			<b>11,805</b>
3 1/8" Tag Gun	# 1	1.5	9h				<b>Gun # 1</b>
			<b>11,820.50</b>				
B.P. with Direct Press F.H.		2.25	11,823			17.52	
BBLs Capacity			Total Shots	36			

**K.B. Adj.** GL to Conn **20.50'** R.I.H & '0' Odom. **24.02**

1) Bleed off casing press before RIH with Guns	K B	=	14.00
2) Set pump kickout to 1,000 psi before RIH with Guns	TVD	=	7,900
3) RIH with no circulation and with BACKSIDE OPENED	Fl Wt	=	8.60
4) If needed to circulate then KEEP pump kickout @1,000 psi	Temp	=	183 °F
Only roll pump while going in Hole and monitor CSG. Press.	PBTD	=	11,860
5) When on btm with Guns reset kickout to 5,000 psi to Shoot	Odom	=	11,842
6) RU press. gauge to monitor casing pressure when firing Guns	T D	=	

**Direct Pressure Firing Head Surface Pressure to Fire**

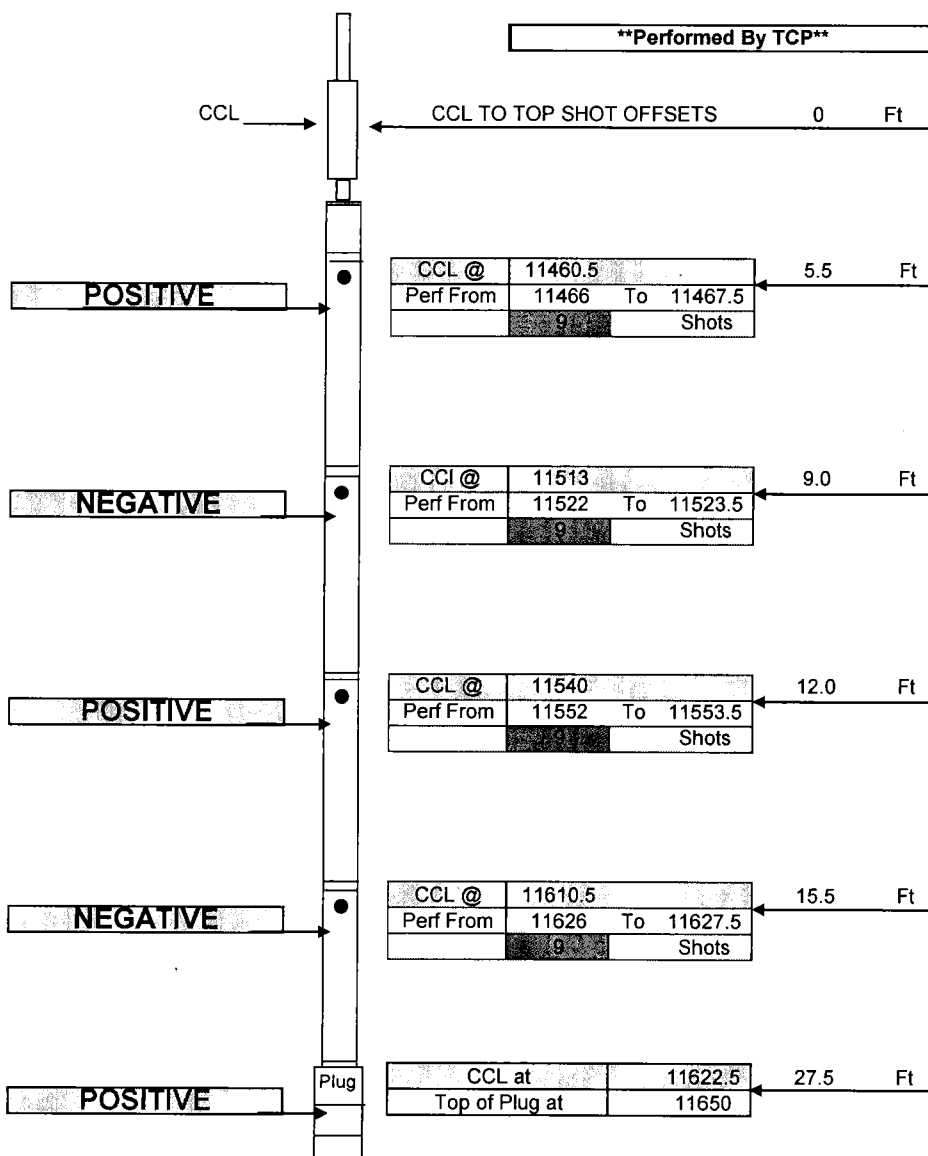
Nominal	2,541	PSI
Maximum	2,844	PSI
Minimum	2,237	PSI



# Perforation Schematic

Company	CHESAPEAKE ENERGY
Well Name	State 10-67 28 1H
Stage #	2
Run #	<b>**Performed By TCP**</b>
Supervisor	<i>Jeff</i>
Date / Time	5/4/11 3:00 AM
Location	1
Weather	1
Wind Direc.	1

Cert. #	4459
Pattern	60
EHD	0.40"
Penetration	38.7"
Total Lbs	
Max lbs/delay	
Method of Fire	Elec
Distance / Structure	N/A
Seismograph	No



36	<b>Total Shots</b>
9	<b>Total Feet</b>

**Short Joint @** 7940-7962

Depth	Degrees
7325	10

7425	20
------	----

7550	30
------	----

7650	40
------	----

7800	50
------	----

7900	60
------	----

8090	70
------	----

8190	80
------	----

8450	90
------	----

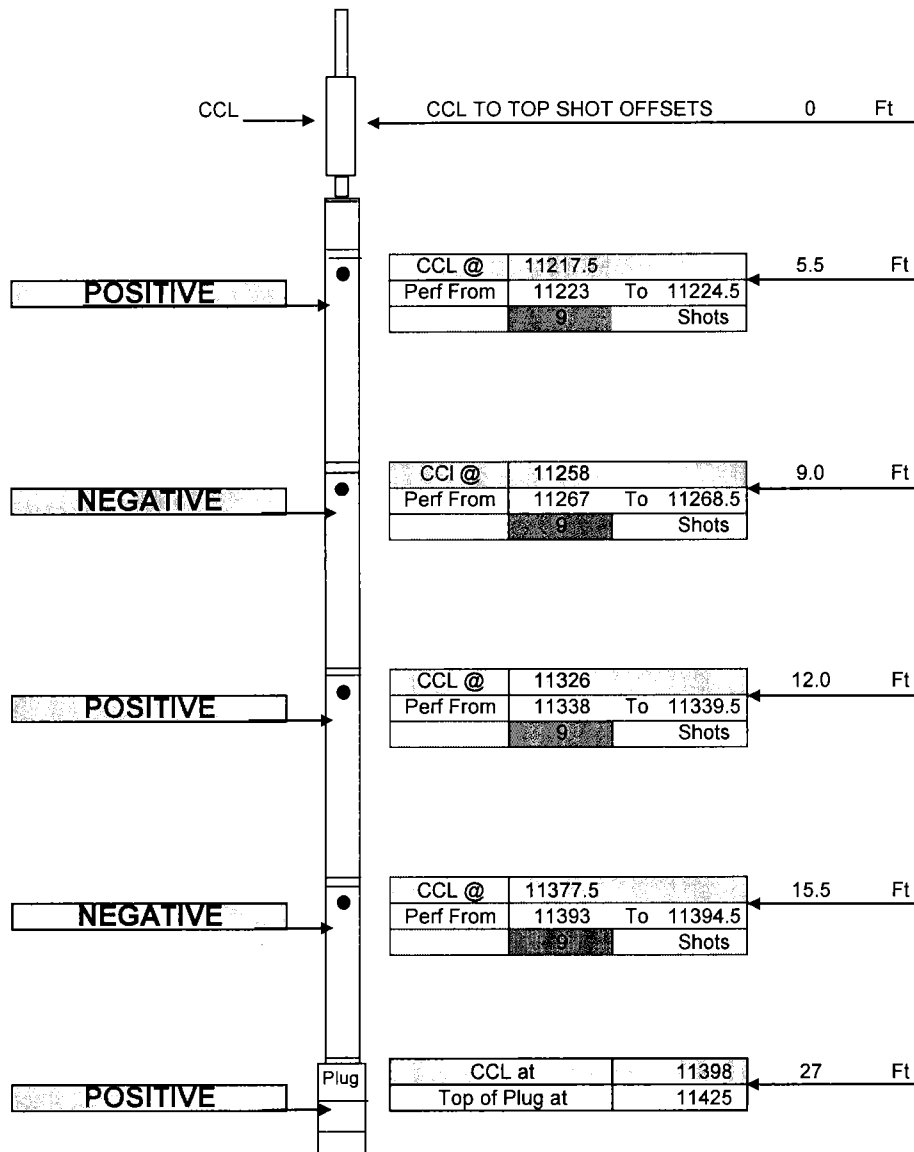
Top of bottom set of perforations at 11697



# Perforation Schematic

Company	CHESAPEAKE ENERGY	
Well Name	State 10-67 28 1H	
Stage #	3	
Run #	1	
Supervisor	Sam Hopper	
Date / Time	5/4/11 6:00 AM	
Location	1	
Weather	1	
Wind Direc.	1	

Cert. #	4459
Pattern	60
EHD	0.40"
Penetration	38.7"
Total Lbs	
Max lbs/delay	
Method of Fire	Elec
Distance / Structure	N/A
Seismograph	No



36	Total Shots
9	Total Feet

Short Joint @ 7940-7962

Depth	Degrees
7325	10
7425	20
7550	30
7650	40
7800	50
7900	60
8090	70
8190	80
8450	90

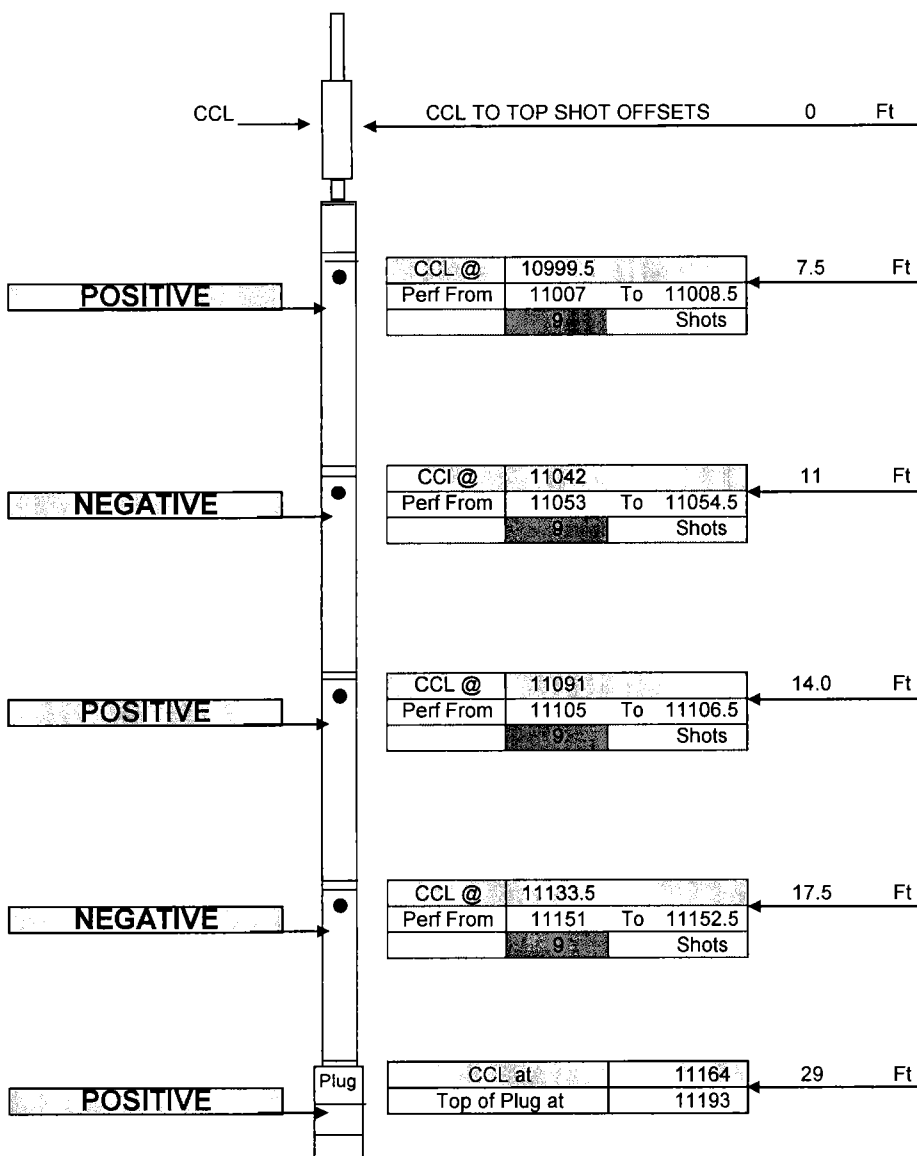
Top of bottom set of perforations at 11466



# Perforation Schematic

Company	CHESAPEAKE ENERGY
Well Name	State 10-67 28 1H
Stage #	4
Run #	1
Supervisor	Sam Hopper
Date / Time	5/4/11 12:00 PM
Location	1
Weather	1
Wind Direc.	1

Cert. #	4459
Pattern	60
EHD	0.40"
Penetration	38.7"
Total Lbs	
Max lbs/delay	
Method of Fire	Elec
Distance / Structure	N/A
Seismograph	No



36	Total Shots
9	Total Feet

Short Joint @ 7940-7962

Depth	Degrees
7325	10
7425	20
7550	30
7650	40
7800	50
7900	60
8090	70
8190	80
8450	90

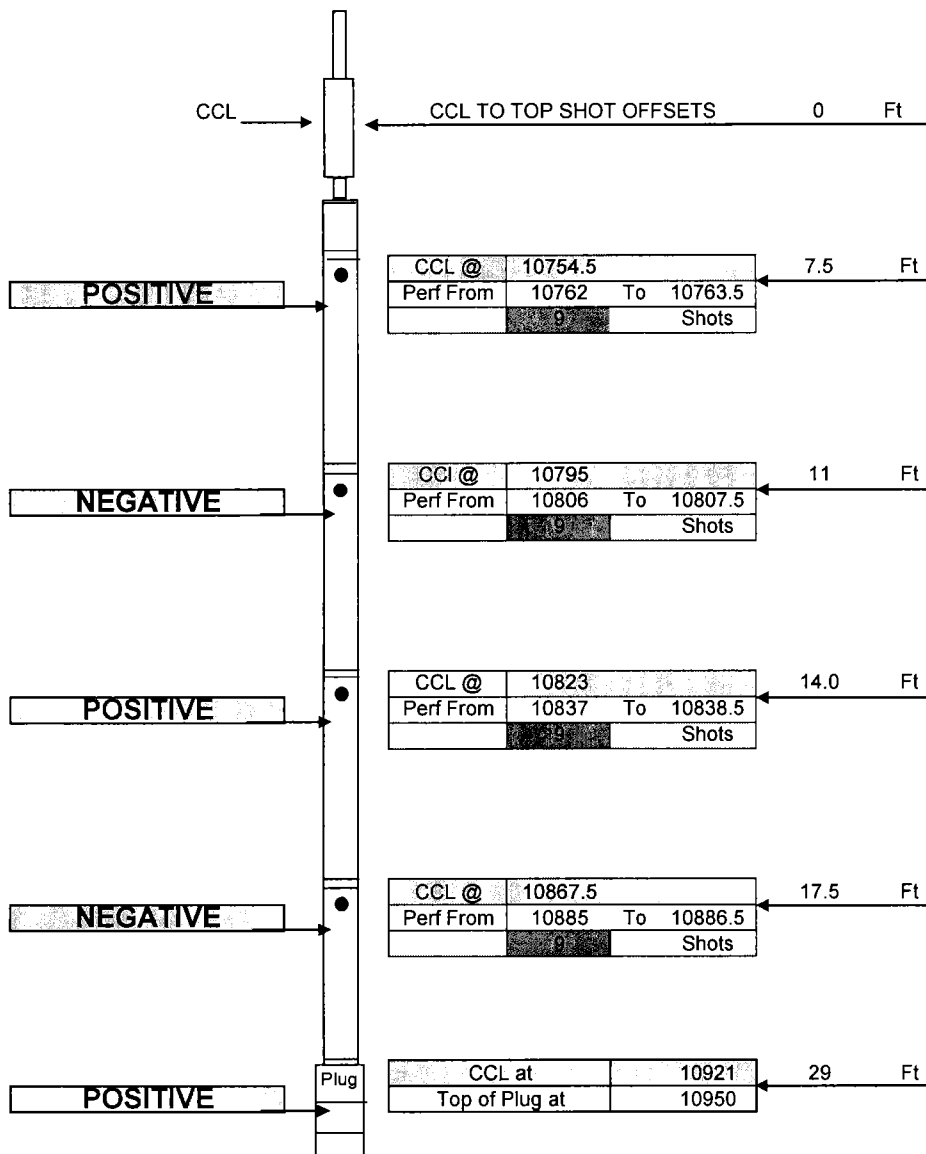
Top of bottom set of perforations at 11223



# Perforation Schematic

Company	CHESAPEAKE ENERGY
Well Name	State 10-67 28 1H
Stage #	5
Run #	1
Supervisor	Sam Hopper
Date / Time	5/5/11 6:00 AM
Location	1
Weather	1
Wind Direc.	1

Cert. #	4459
Pattern	60
EHD	0.40"
Penetration	38.7"
Total Lbs	
Max lbs/delay	
Method of Fire	Elec
Distance / Structure	N/A
Seismograph	No



36	Total Shots
9	Total Feet

Short Joint @ 7940-7962

Depth	Degrees
7325	10
7425	20
7550	30
7650	40
7800	50
7900	60
8090	70
8190	80
8450	90

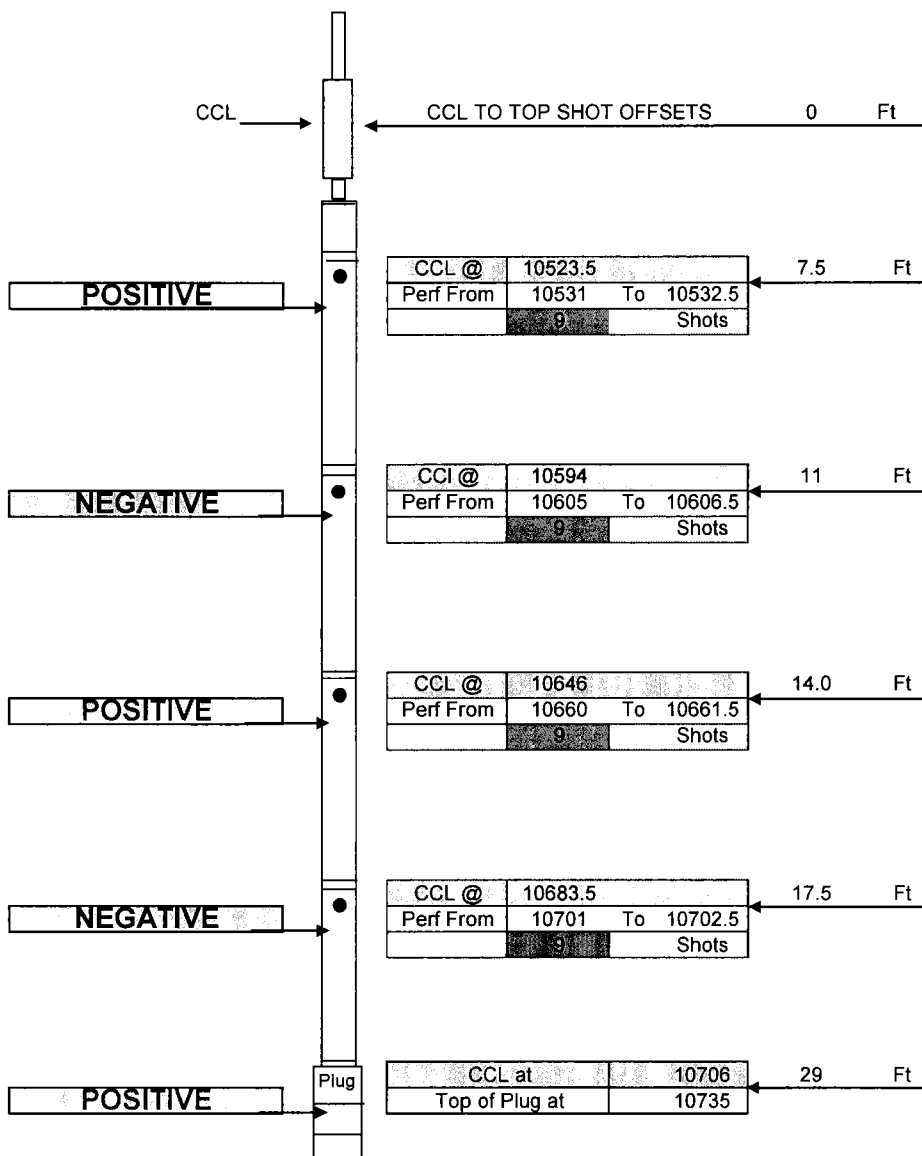
Top of bottom set of perforations at 11007



# Perforation Schematic

Company	CHESAPEAKE ENERGY
Well Name	State 10-67 28 1H
Stage #	6
Run #	1
Supervisor	Sam Hopper
Date / Time	5/5/11 12:00 PM
Location	1
Weather	1
Wind Direc.	1

Cert. #	4459
Pattern	60
EHD	0.40"
Penetration	38.7"
Total Lbs	
Max lbs/delay	
Method of Fire	Elec
Distance / Structure	N/A
Seismograph	No



36	Total Shots
9	Total Feet

Short Joint @ 7940-7962

Depth	Degrees
7325	10
7425	20
7550	30
7650	40
7800	50
7900	60
8090	70
8190	80
8450	90

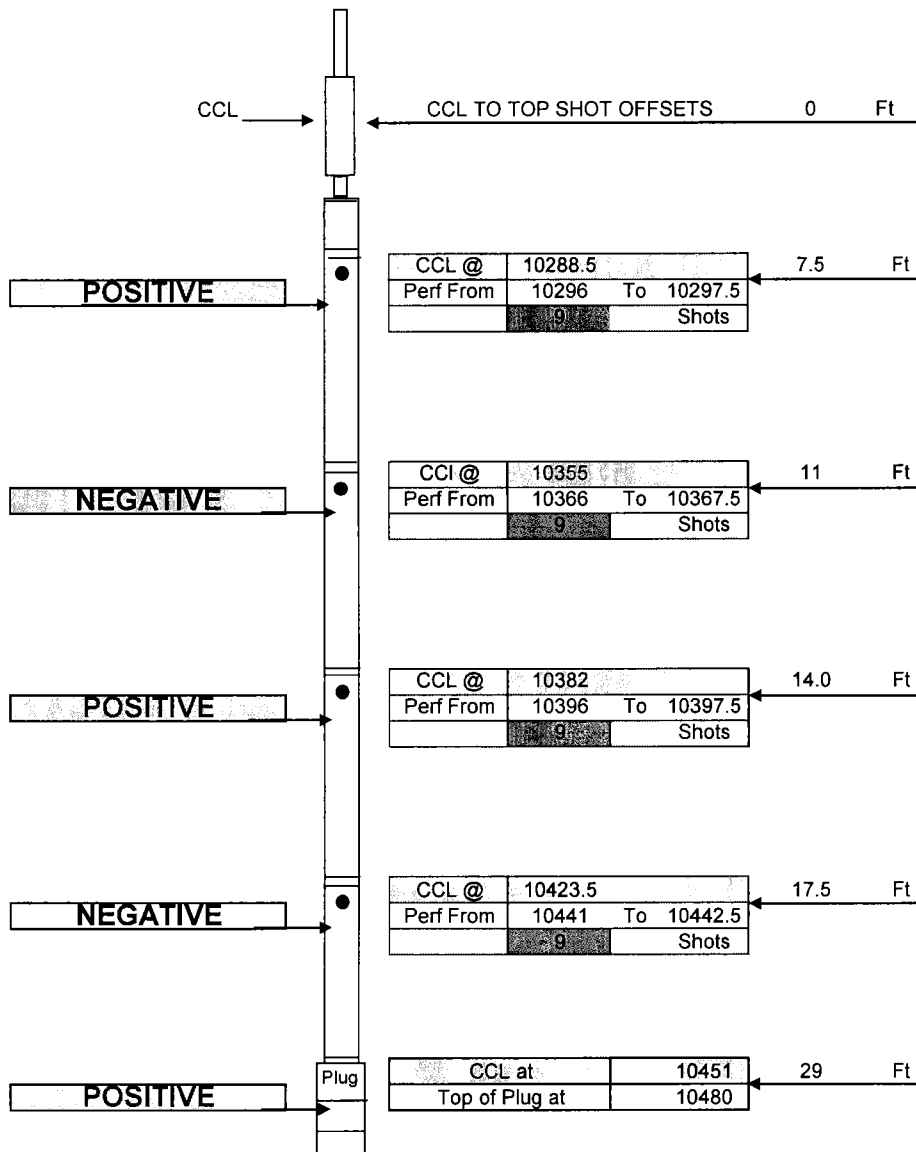
Top of bottom set of perforations at 10762



# Perforation Schematic

Company	CHESAPEAKE ENERGY
Well Name	State 10-67 28 1H
Stage #	7
Run #	1
Supervisor	Sam Hopper
Date / Time	5/5/11 12:00 PM
Location	1
Weather	1
Wind Direc.	1

Cert. #	4459
Pattern	60
EHD	0.40"
Penetration	38.7"
Total Lbs	
Max lbs/delay	
Method of Fire	Elec
Distance / Structure	N/A
Seismograph	No



36	Total Shots
9	Total Feet

Short Joint @ 7940-7962

Depth	Degrees
7325	10
7425	20
7550	30
7650	40
7800	50
7900	60
8090	70
8190	80
8450	90

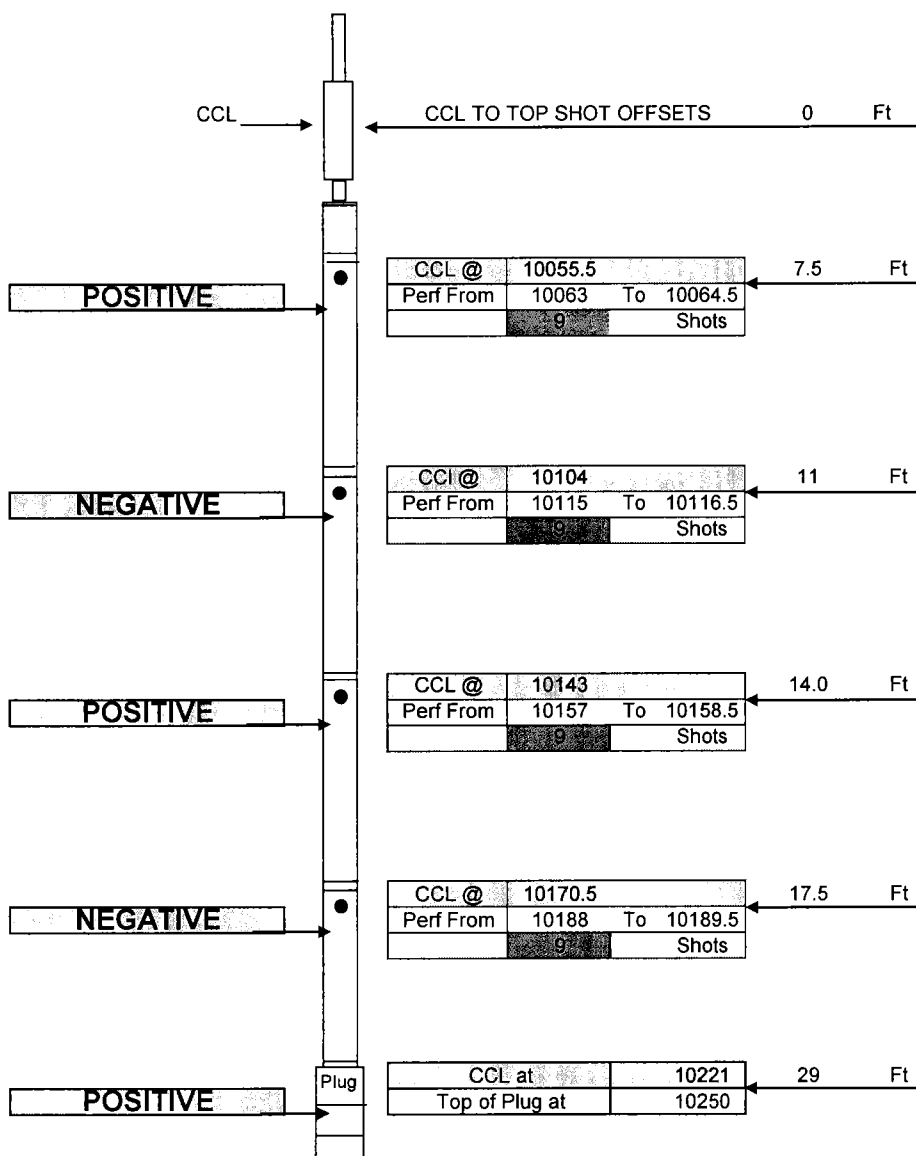
Top of bottom set of perforations at 10531



**Perforation Schematic**

Company	CHESAPEAKE ENERGY
Well Name	State 10-67 28 1H
Stage #	8
Run #	1
Supervisor	Sam Hopper
Date / Time	5/6/11 6:00 AM
Location	1
Weather	1
Wind Direc.	1

Cert. #	4459
Pattern	60
EHD	0.40"
Penetration	38.7"
Total Lbs	
Max lbs/delay	
Method of Fire	Elec
Distance / Structure	N/A
Seismograph	No



36	Total Shots
9	Total Feet

Short Joint @ 7940-7962

Depth	Degrees
7325	10
7425	20
7550	30
7650	40
7800	50
7900	60
8090	70
8190	80
8450	90

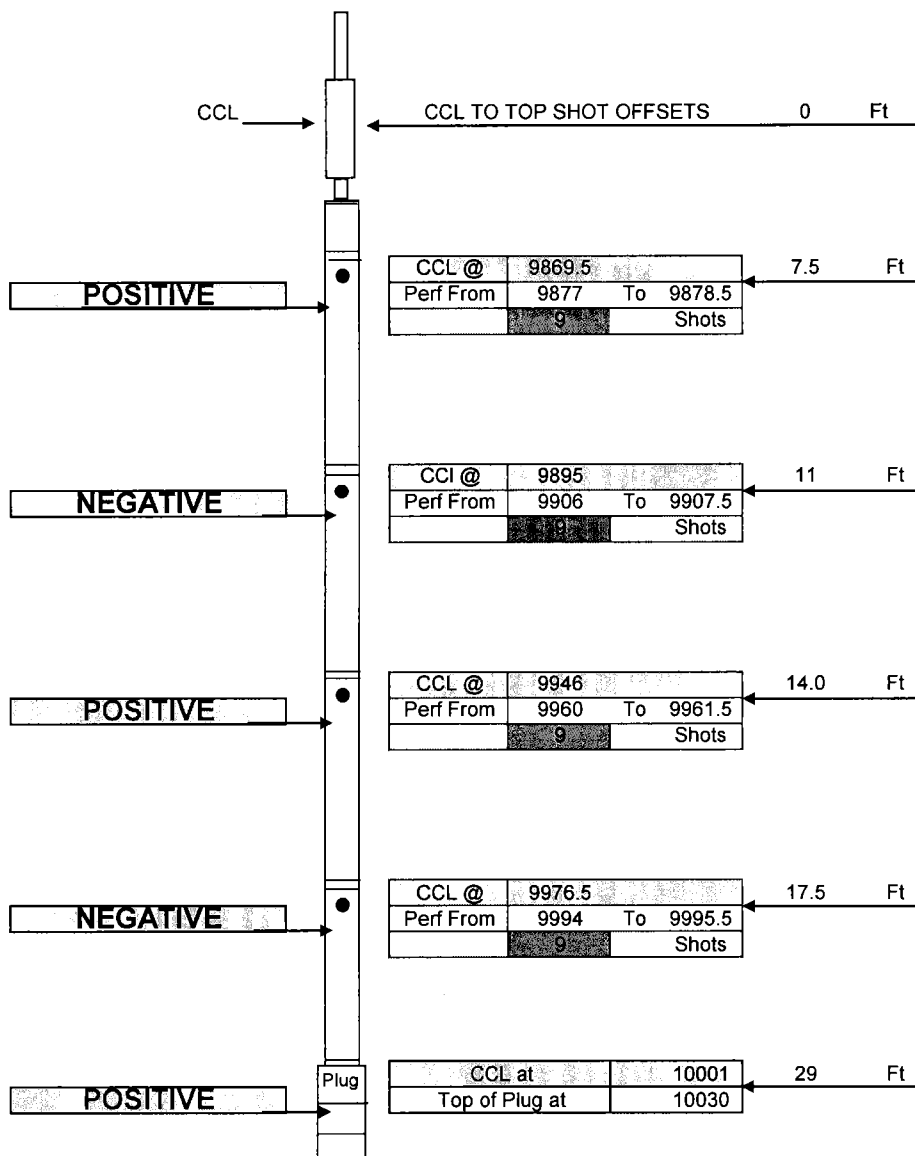
Top of bottom set of perforations at 10296



**Perforation Schematic**

Company	CHESAPEAKE ENERGY
Well Name	State 10-67 28 1H
Stage #	9
Run #	1
Supervisor	Sam Hopper
Date / Time	5/6/11 6:00 AM
Location	1
Weather	1
Wind Direc.	1

Cert. #	4459
Pattern	60
EHD	0.40"
Penetration	38.7"
Total Lbs	
Max lbs/delay	
Method of Fire	Elec
Distance / Structure	N/A
Seismograph	No



36	Total Shots
9	Total Feet

Short Joint @ 7940-7962

Depth	Degrees
7325	10
7425	20
7550	30
7650	40
7800	50
7900	60
8090	70
8190	80
8450	90

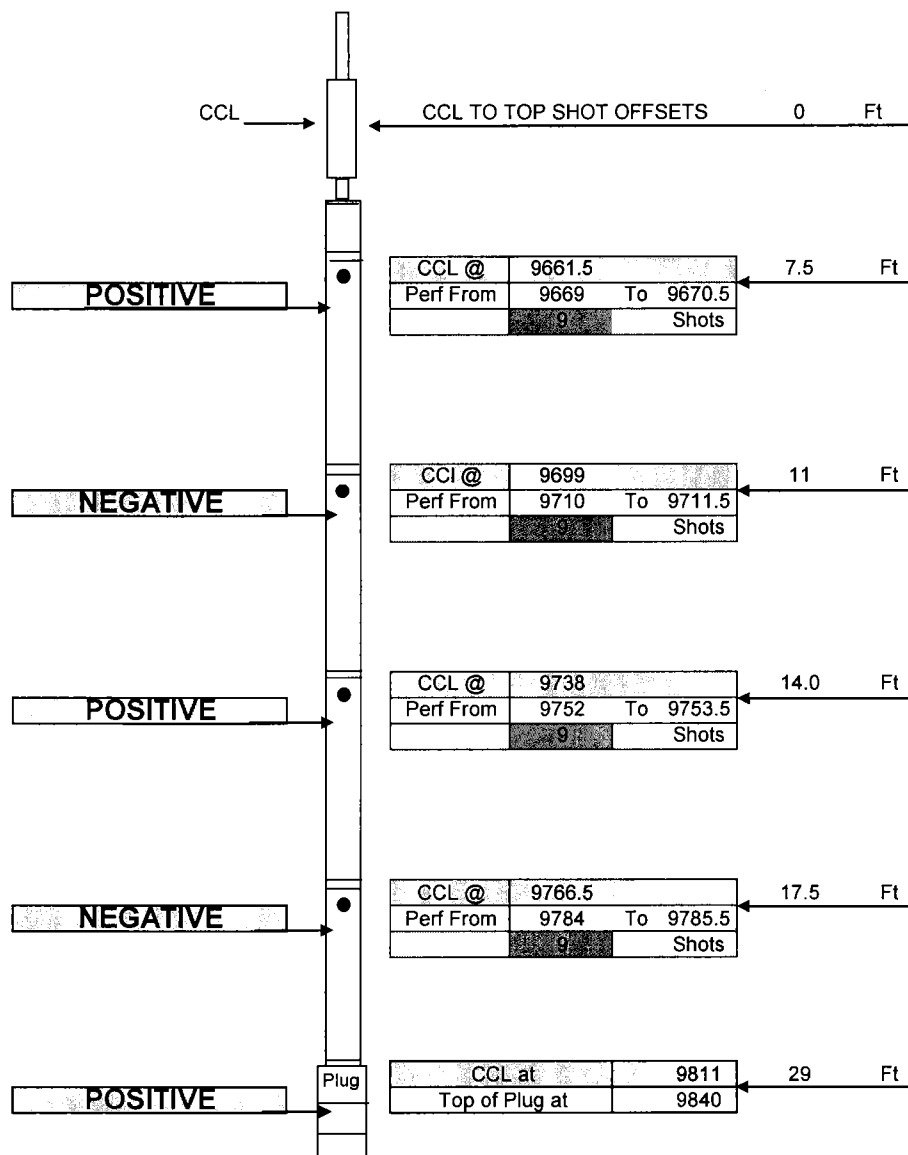
Top of bottom set of perforations at 10063



# Perforation Schematic

Company	CHESAPEAKE ENERGY	
Well Name	State 10-67 28 1H	
Stage #	10	
Run #	1	
Supervisor	Sam Hopper	
Date / Time	5/6/11 12:00 PM	
Location	1	
Weather	1	
Wind Direc.	1	

Cert. #	4459
Pattern	60
EHD	0.40"
Penetration	38.7"
Total Lbs	
Max lbs/delay	
Method of Fire	Elec
Distance / Structure	N/A
Seismograph	No



36	Total Shots
9	Total Feet

Short Joint @ 7940-7962

Depth	Degrees
7325	10
7425	20
7550	30
7650	40
7800	50
7900	60
8090	70
8190	80
8450	90

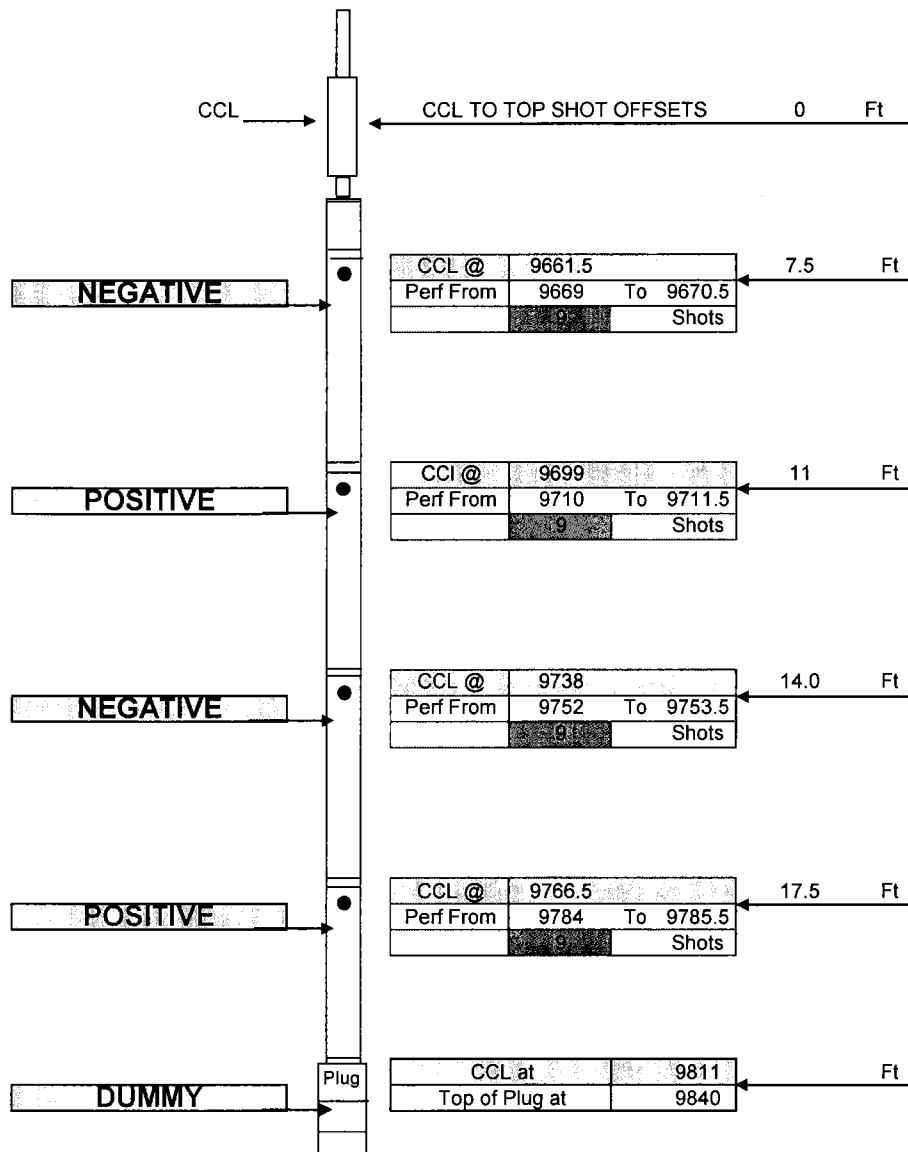
Top of bottom set of perforations at 9873



# Perforation Schematic

Company	CHESAPEAKE ENERGY
Well Name	State 10-67 28 1H
Stage #	10
Run #	2
Supervisor	Sam Hopper
Date / Time	5/10/11 6:00 AM
Location	1
Weather	1
Wind Direc.	1

Cert. #	4459
Pattern	60
EHD	0.40"
Penetration	38.7"
Total Lbs	
Max lbs/delay	
Method of Fire	Elec
Distance / Structure	N/A
Seismograph	No



36	Total Shots
9	Total Feet

Short Joint @ 7940-7962

Depth	Degrees
7325	10
7425	20
7550	30
7650	40
7800	50
7900	60
8090	70
8190	80
8450	90

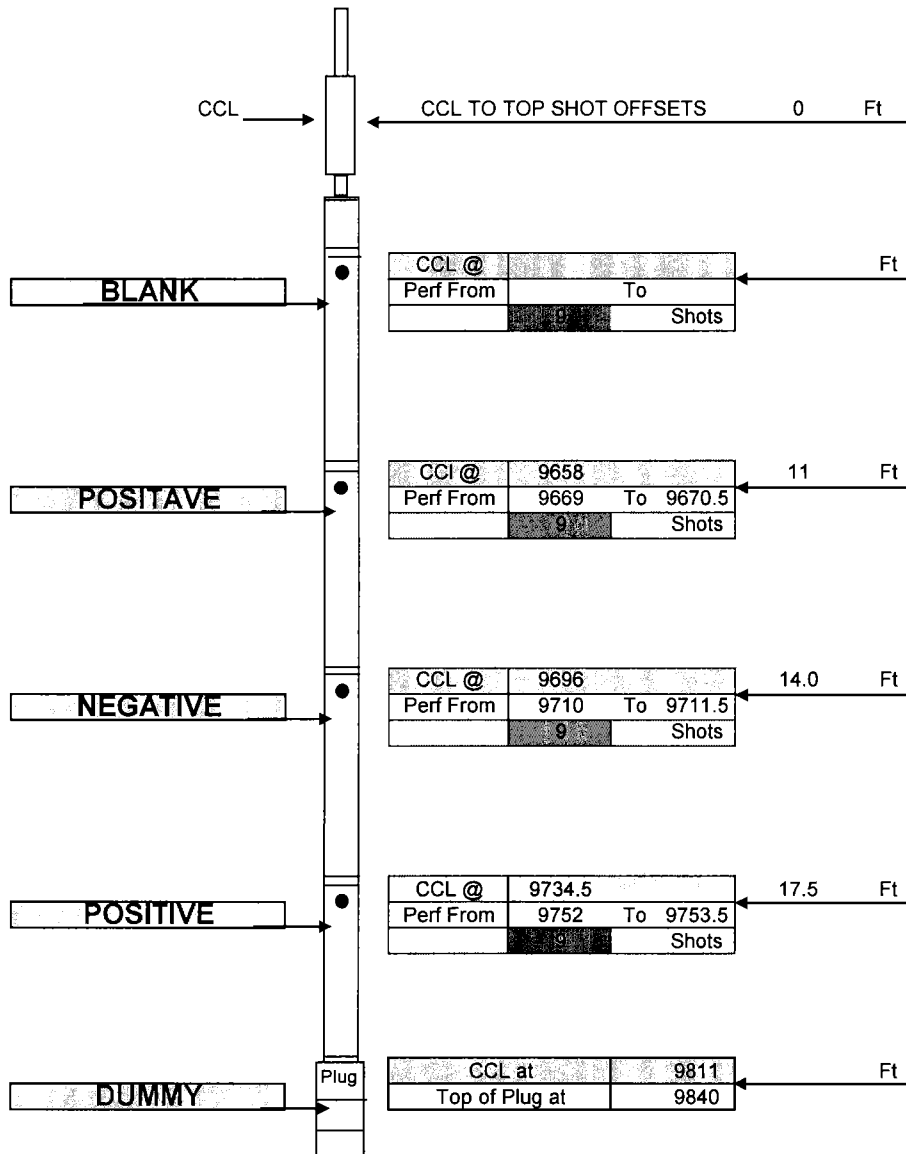
Top of bottom set of perforations at 9873



**Perforation Schematic**

Company	CHESAPEAKE ENERGY
Well Name	State 10-67 28 1H
Stage #	10
Run #	3
Supervisor	Sam Hopper
Date / Time	5/10/11 12:00 PM
Location	1
Weather	1
Wind Direc.	1

Cert. #	4459
Pattern	60
EHD	0.40"
Penetration	38.7"
Total Lbs	
Max lbs/delay	
Method of Fire	Elec
Distance / Structure	N/A
Seismograph	No



36	Total Shots
9	Total Feet

Short Joint @ 7940-7962

Depth	Degrees
7325	10
7425	20
7550	30
7650	40
7800	50
7900	60
8090	70
8190	80
8450	90

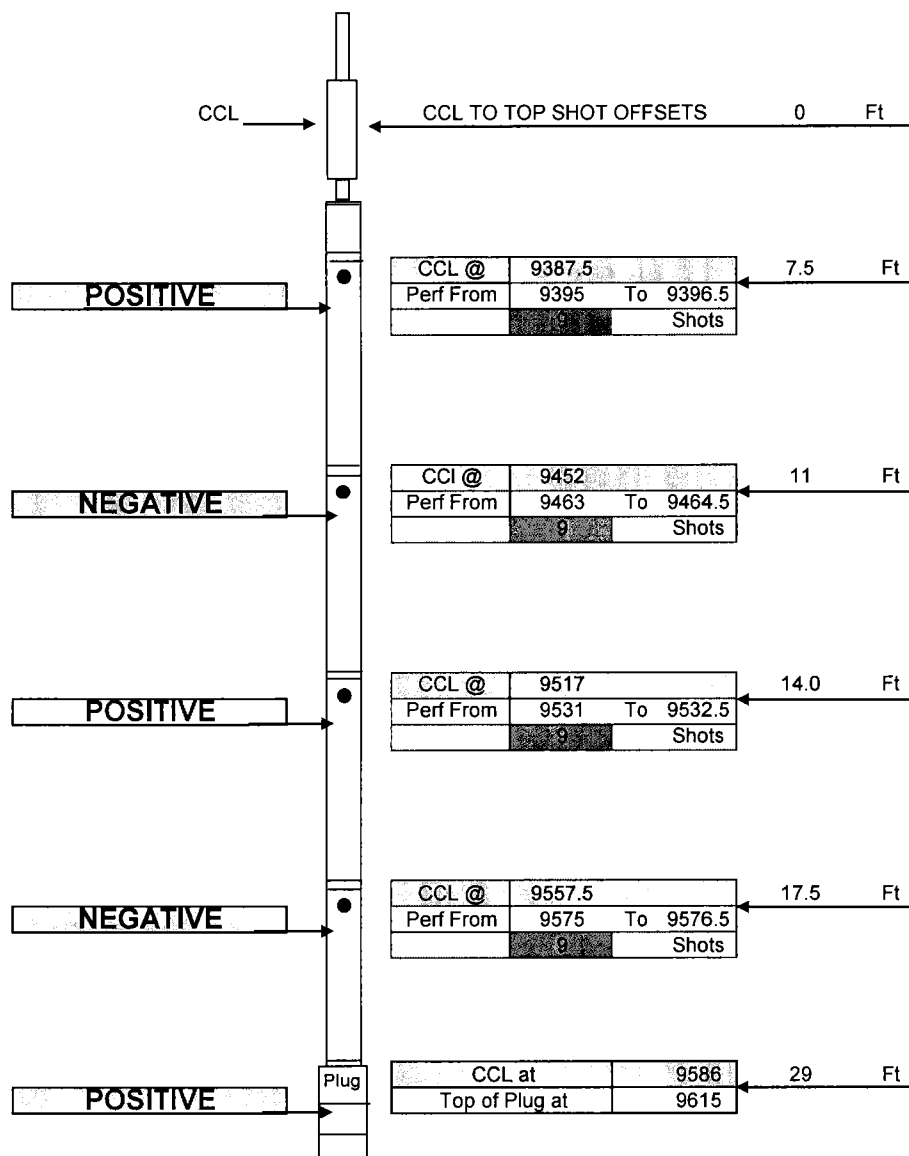
Top of bottom set of perforations at 9784



# Perforation Schematic

Company	CHESAPEAKE ENERGY	
Well Name	State 10-67 28 1H	
Stage #	11	
Run #	1	
Supervisor	Sam Hopper	
Date / Time	5/10/11 6:00 PM	
Location	1	
Weather	1	
Wind Direc.	1	

Cert. #	4459
Pattern	60
EHD	0.40"
Penetration	38.7"
Total Lbs	
Max lbs/delay	
Method of Fire	Elec
Distance / Structure	N/A
Seismograph	No



36	Total Shots
9	Total Feet

Short Joint @ 7940-7962

Depth	Degrees
7325	10
7425	20
7550	30
7650	40
7800	50
7900	60
8090	70
8190	80
8450	90

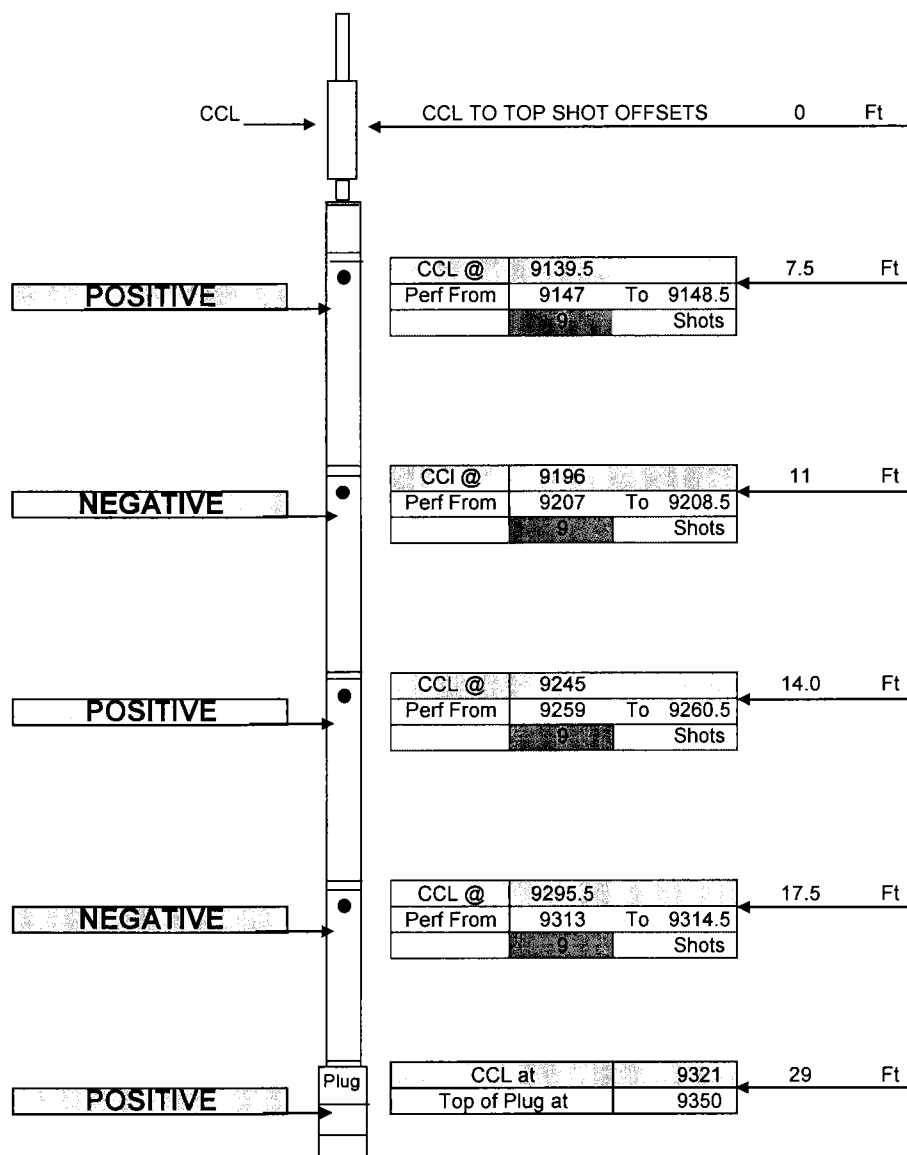
Top of bottom set of perforations at 9784



# Perforation Schematic

Company	CHESAPEAKE ENERGY
Well Name	State 10-67 28 1H
Stage #	12
Run #	1
Supervisor	Sam Hopper
Date / Time	5/11/11 6:00 AM
Location	1
Weather	1
Wind Direc.	1

Cert. #	4459
Pattern	60
EHD	0.40"
Penetration	38.7"
Total Lbs	
Max lbs/delay	
Method of Fire	Elec
Distance / Structure	N/A
Seismograph	No



36	Total Shots
9	Total Feet

Short Joint @ 7940-7962

Depth	Degrees
7325	10
7425	20
7550	30
7650	40
7800	50
7900	60
8090	70
8190	80
8450	90

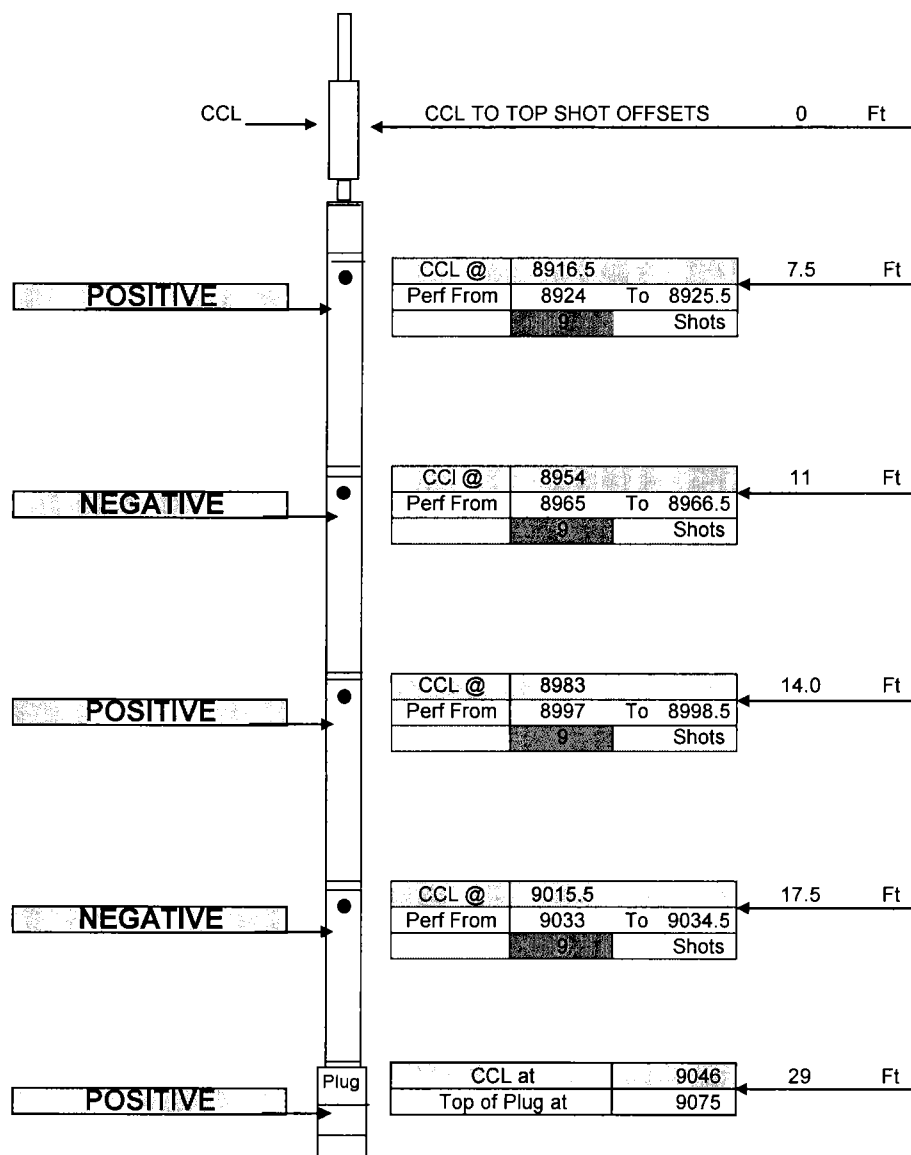
Top of bottom set of perforations at 9395



# Perforation Schematic

Company	CHESAPEAKE ENERGY
Well Name	State 10-67 28 1H
Stage #	13
Run #	1
Supervisor	Sam Hopper
Date / Time	5/11/11 6:00 AM
Location	1
Weather	1
Wind Direc.	1

Cert. #	4459
Pattern	60
EHD	0.40"
Penetration	38.7"
Total Lbs	
Max lbs/delay	
Method of Fire	Elec
Distance / Structure	N/A
Seismograph	No



36	Total Shots
9	Total Feet

Short Joint @ 7940-7962

Depth	Degrees
7325	10
7425	20
7550	30
7650	40
7800	50
7900	60
8090	70
8190	80
8450	90

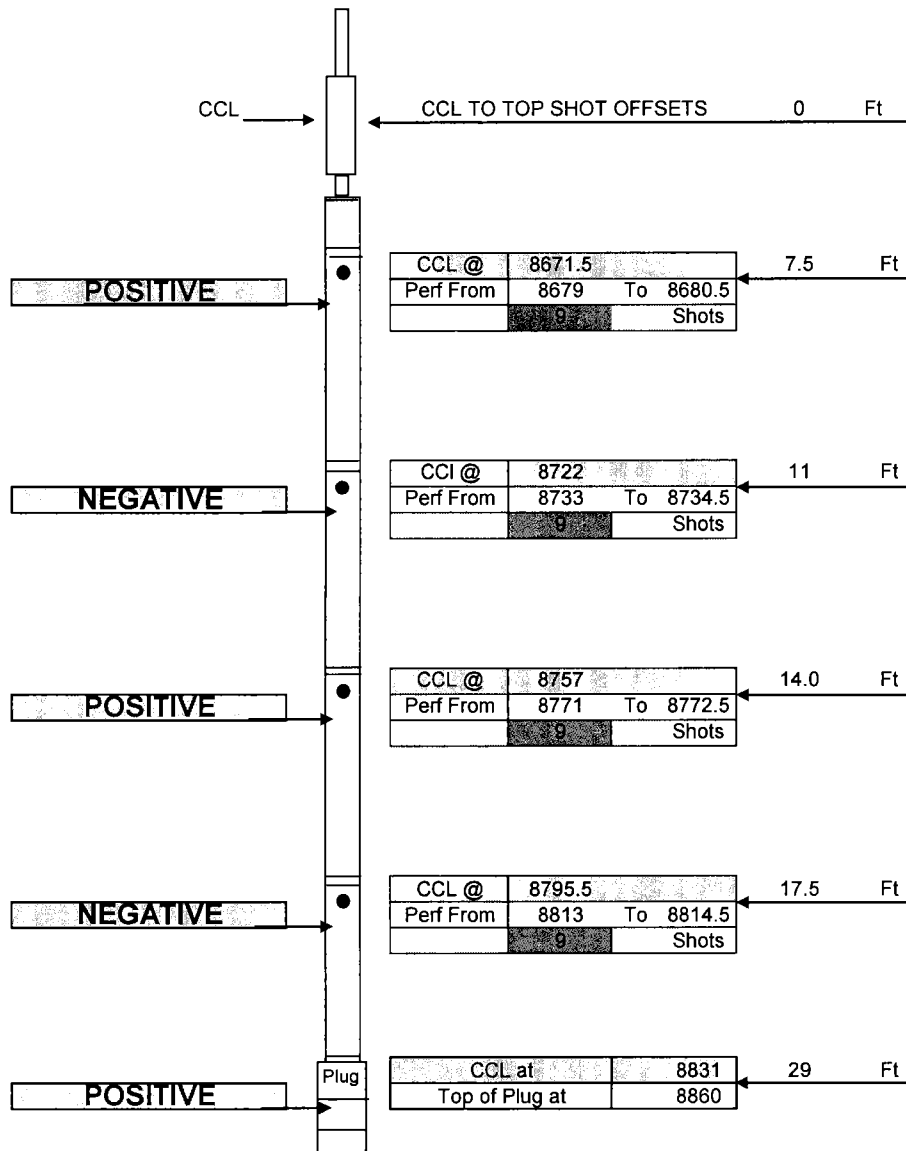
Top of bottom set of perforations at 9147



# Perforation Schematic

Company	CHESAPEAKE ENERGY
Well Name	State 10-67 28 1H
Stage #	14
Run #	1
Supervisor	Sam Hopper
Date / Time	5/11/11 6:00 AM
Location	1
Weather	1
Wind Direc.	1

Cert. #	4459
Pattern	60
EHD	0.40"
Penetration	38.7"
Total Lbs	
Max lbs/delay	
Method of Fire	Elec
Distance / Structure	N/A
Seismograph	No



36	Total Shots
9	Total Feet

Short Joint @ 7940-7962

Depth	Degrees
7325	10
7425	20
7550	30
7650	40
7800	50
7900	60
8090	70
8190	80
8450	90

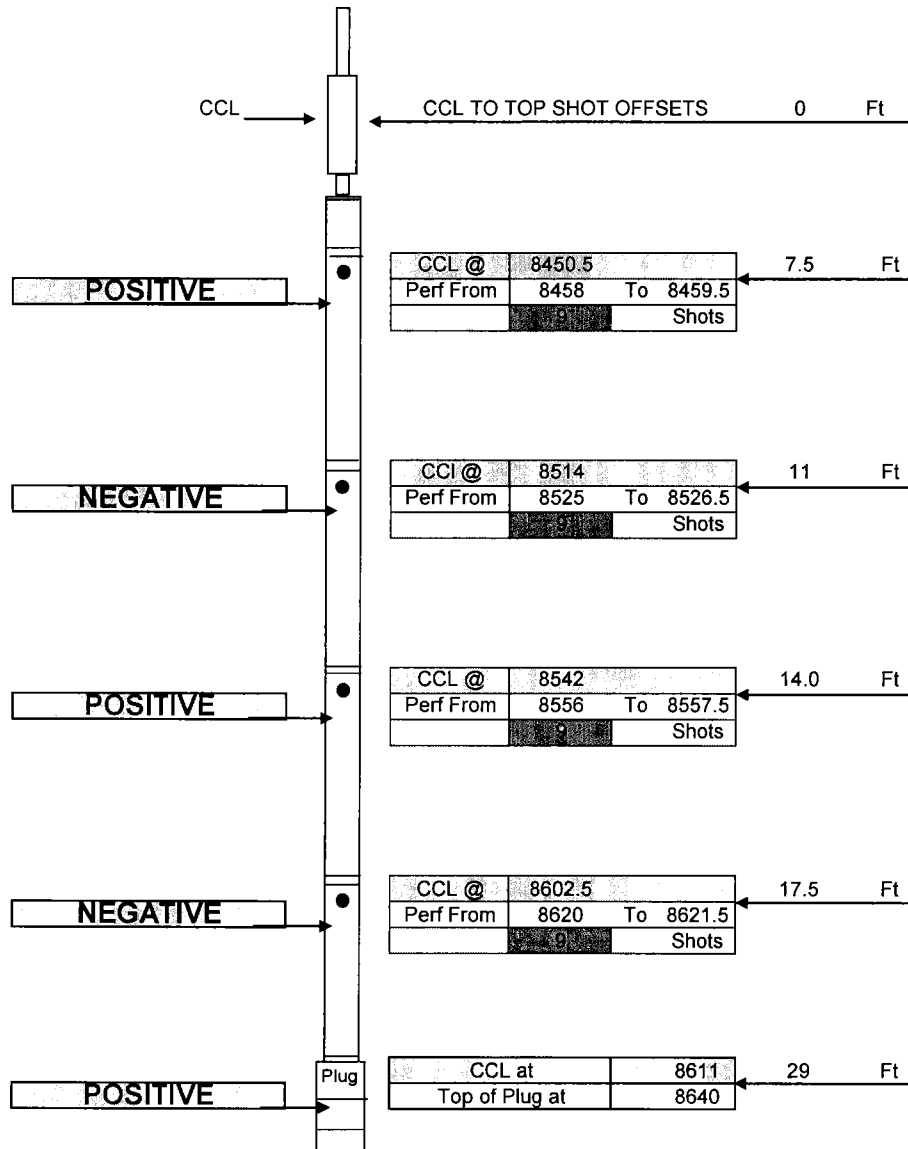
Top of bottom set of perforations at 8921



# Perforation Schematic

Company	CHESAPEAKE ENERGY	
Well Name	State 10-67 28 1H	
Stage #	15	
Run #	1	
Supervisor	Sam Hopper	
Date / Time	5/11/11 12:00 PM	
Location	1	
Weather	1	
Wind Direc.	1	

Cert. #	4459
Pattern	60
EHD	0.40"
Penetration	38.7"
Total Lbs	
Max lbs/delay	
Method of Fire	Elec
Distance / Structure	N/A
Seismograph	No



36	Total Shots
9	Total Feet

Short Joint @ 7940-7962

Depth	Degrees
7325	10
7425	20
7550	30
7650	40
7800	50
7900	60
8090	70
8190	80
8450	90

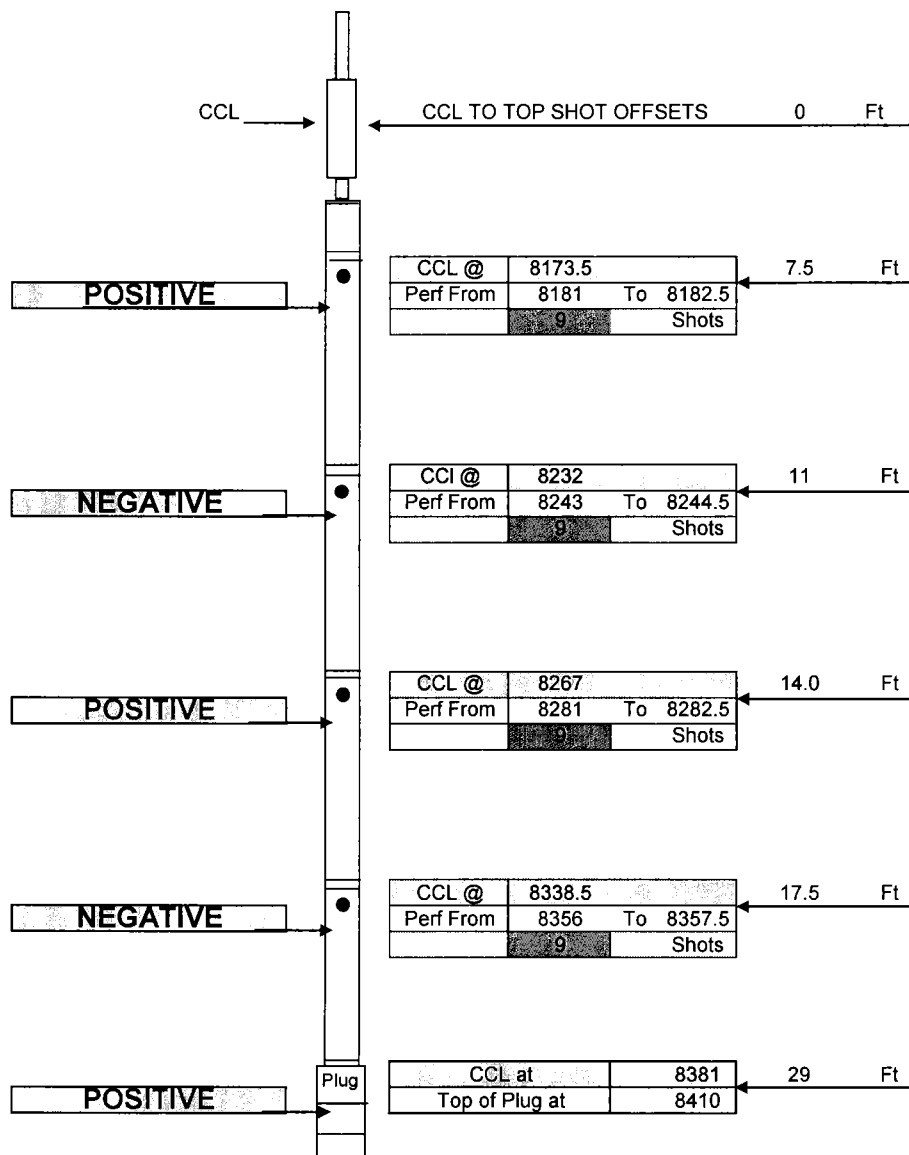
Top of bottom set of perforations at 8679



# Perforation Schematic

Company	CHESAPEAKE ENERGY	
Well Name	State 10-67 28 1H	
Stage #	16	
Run #	1	
Supervisor	Sam Hopper	
Date / Time	5/11/11 12:00 PM	
Location	1	
Weather	1	
Wind Direc.	1	

Cert. #	4459
Pattern	60
EHD	0.40"
Penetration	38.7"
Total Lbs	
Max lbs/delay	
Method of Fire	Elec
Distance / Structure	N/A
Seismograph	No



36	Total Shots
9	Total Feet

Short Joint @ 7940-7962

Depth	Degrees
7325	10
7425	20
7550	30
7650	40
7800	50
7900	60
8090	70
8190	80
8450	90

Top of bottom set of perforations at 8461