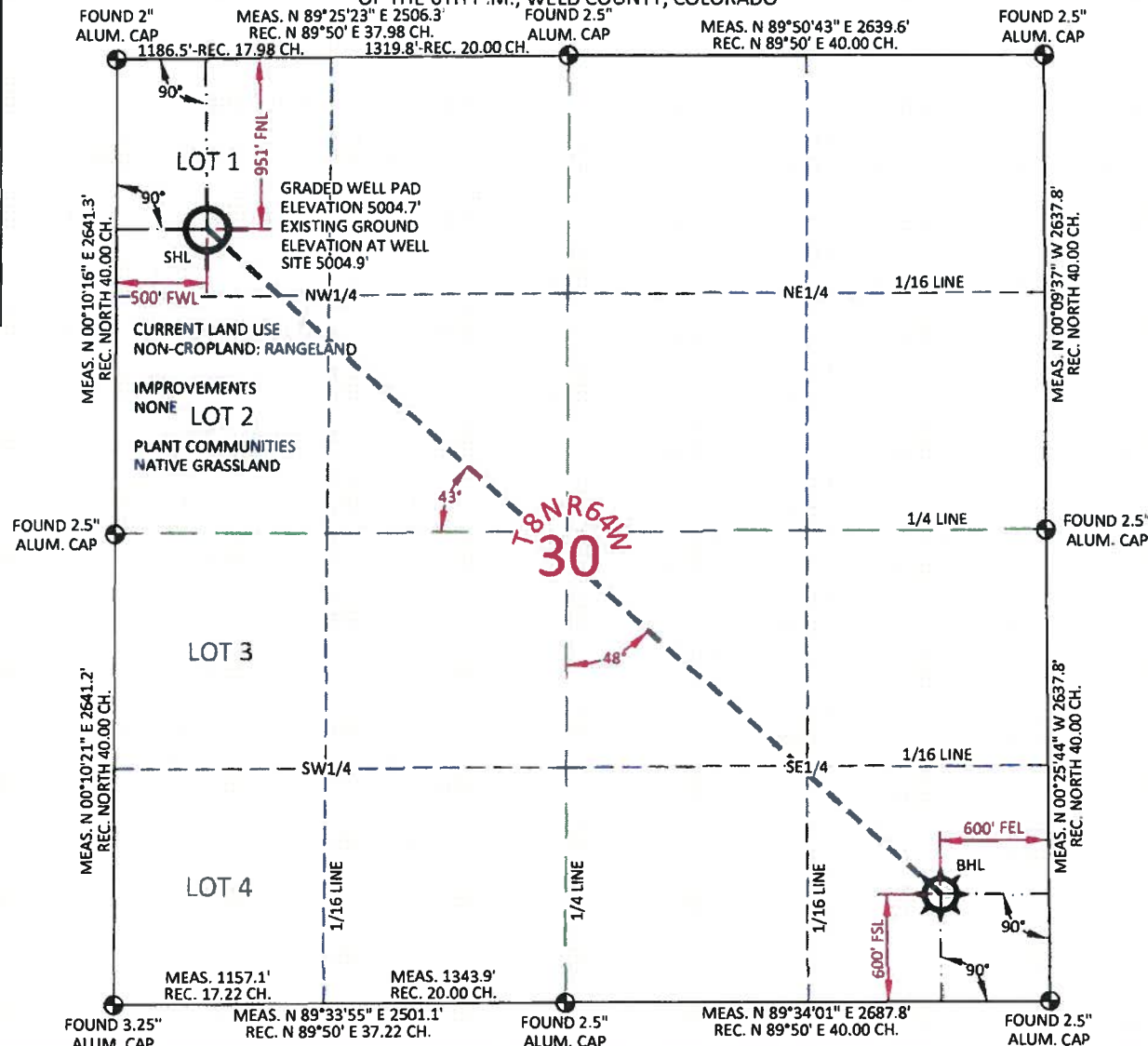


MARATHON OIL CO. OWL CREEK 8-64-30-1A

LOCATED WITHIN LOT 1 OF SECTION 30, T8N, R64W,
OF THE 6TH P.M., WELD COUNTY, COLORADO



SURFACE HOLE LOCATION	
LAT.	40.635534°
LONG.	104.599617°
LAT.	40.635554°
LONG.	104.599101°
LAT.	40°38'07.92"
LONG.	104°35'58.62"
LAT.	40°38'07.99"
LONG.	104°35'56.76"
NORTH	1475635.95
EAST	3249890.33
NORTH	475636.02
EAST	2250040.21
FOOTAGE: 500' FWL - 951' FNL	
MEASURE DATE	04/04/2011
INSTRUMENT OPERATOR	ADAM HARMON
PDOP	2.5
SHL GRND ELEV.	5004.9'

BOTTOM HOLE LOCATION	
LAT.	40.625259°
LONG.	104.585087°
LAT.	40.625278°
LONG.	104.584571°
LAT.	40°37'30.93"
LONG.	104°35'06.31"
LAT.	40°37'31.00"
LONG.	104°35'04.46"
NORTH	1471933.76
EAST	3253961.55
NORTH	471933.91
EAST	2254111.25
FOOTAGE: 600' FEL - 600' FSL	

I, William H. Dolinar, Professional Land Surveyor, CO. RLS # 38070 hereby certify that (in accordance with a request from Anna Walls with Marathon Oil Co, 5555 San Felipe, Houston, TX 77056) I and or personnel under my direction made a survey on the 4th day of April 2011, for the Surface Hole Location and Elevation of Marathon Oil Co. OWL CREEK 8-64-30-1A being located within Lot 1, Section 30, T8N, R64W, and the Bottom Hole Location being located in the SE1/4 SE1/4 of Section 30, T8N, R64W, both being of the 6th P.M., Weld County, State of Colorado.

- All bearings and distances are GRID, based on the Colorado State Plane Coordinate System, North Zone, North American Datum 1983 from GPS observations occupying a WHS control point (5/8" rebar) and having the Location and Elevation derived from an Opus Solution.
- Vertical Datum used is of NAVD 88.
- Record Bearings and Distances as shown are based on the General Land Office Survey plat approved on the 20th day of October 1870.



CONFIDENTIALITY NOTES:

The information contained in this plat is legally privileged and confidential information intended only for the use of the recipients. If you are not the intended recipients, you are hereby notified that any use, dissemination, distribution or copying of this information is strictly prohibited.

WILLIAM H. SMITH & ASSOCIATES P.C.
SURVEYING CONSULTANTS
30 EAST SECOND NORTH GREEN RIVER, WY
PHONE: 307-875-3638 307-875-3639
www.whtsmithpc.com

DRAWN BY: DTW
PROJECT NO: 864301A
REVISIONS:

CHECKED BY: WHD
JOB NO: 2011001

LEGEND

- FOUND CORNER
- CALCULATED CORNER
- NOTHING FOUND

LOCATION:
OWL CREEK
8-64-30-1A
WITHIN LOT 1 OF
SECTION 30,
T 8 N, R 64 W,
6TH PM.
WELD COUNTY,
COLORADO

MARATHON OIL COMPANY
PO BOX 3128, HOUSTON TX, 77253
5555 SAN FELIPE, HOUSTON TX, 77056

WELL LOCATION PLAT

SCALE: 1"=1000'
DATE: 04/05/2011

EXHIBIT "A"
SHEET 1 OF 1