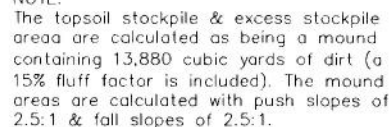


Section 1, T8S, R97W, 6th P.M.

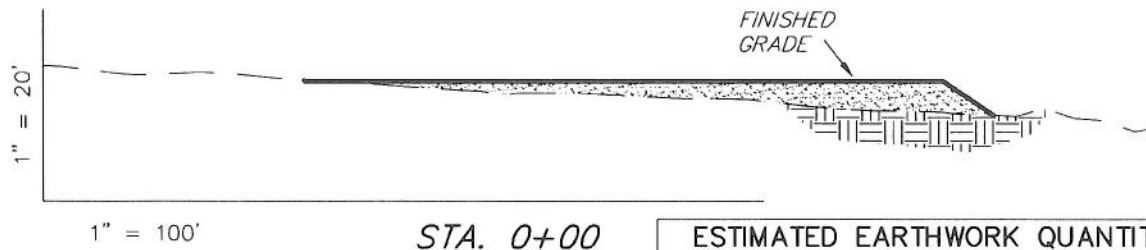
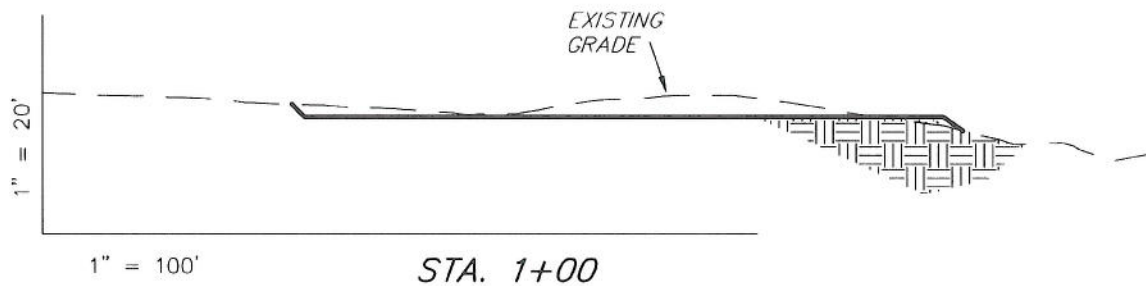
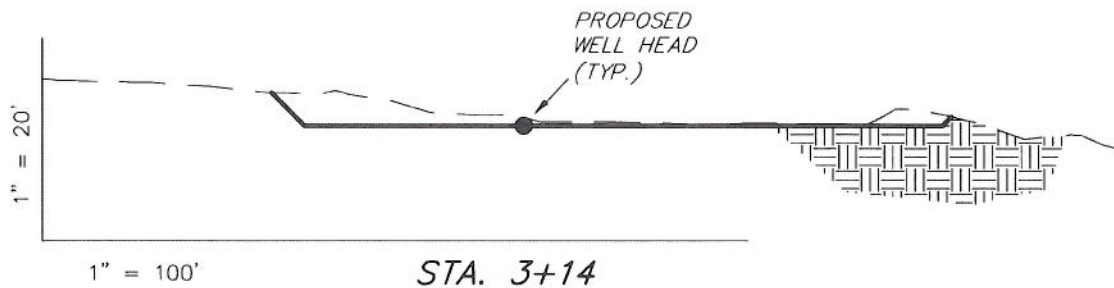
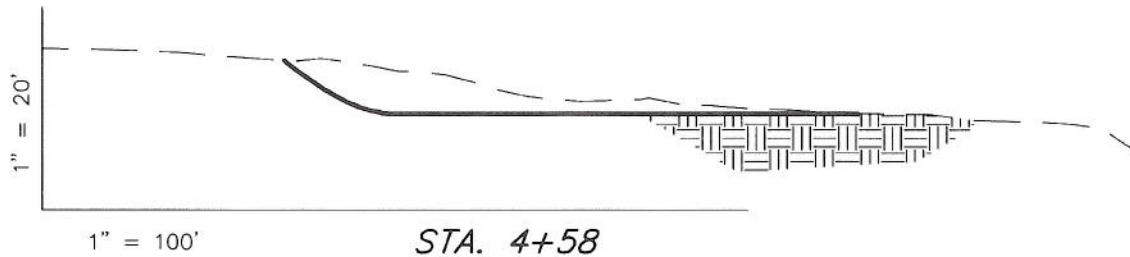


SHEET  
4  
OF 11

# ENCANA OIL & GAS (USA) INC

## CROSS SECTIONS

### WELL PAD (ON1) EXPANSION Section 1, T8S, R97W, 6th P.M.



#### ESTIMATED EARTHWORK QUANTITIES (No Shrink or swell adjustments have been used) (Expressed in Cubic Yards)

ITEM	CUT	FILL	6" TOPSOIL	EXCESS
PAD	25,730	13,660	Topsoil is not included in Pad Cut	12,070
PIT	0	0		0
TOTALS	25,730	13,660	3,190	12,070

SURVEYED BY: C.D.S. DATE SURVEYED: 08-16-07  
 DRAWN BY: M.W. DATE DRAWN: 10-07-10  
 SCALE: 1" = 100' REVISED: L.C.S. 05-25-11

**Tri State**  
 Land Surveying, Inc.  
 180 NORTH VERNAL AVE. VERNAL, UTAH 84078  
 (435) 781-2501

SHEET  
 5  
 OF 11

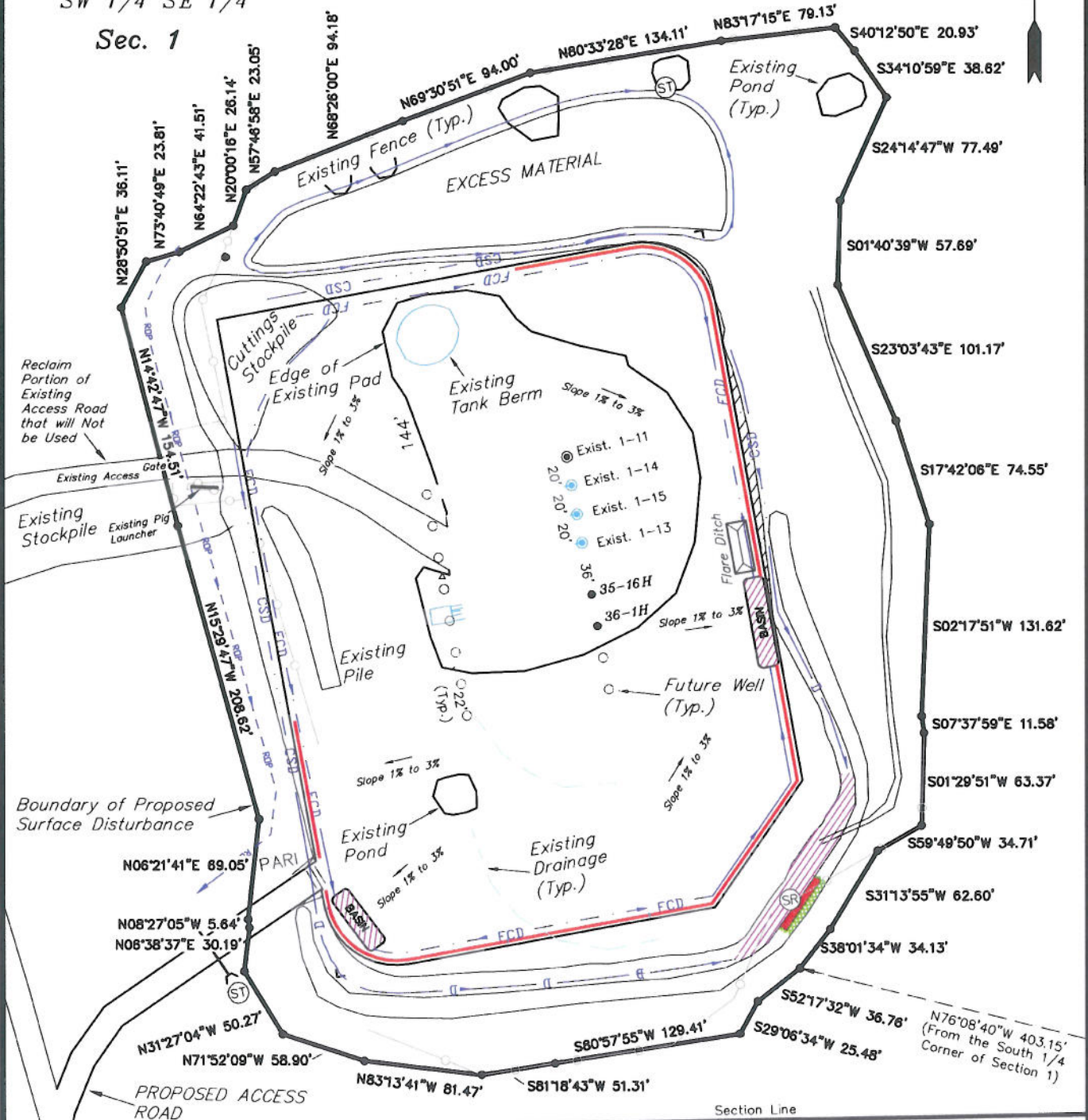


# ENCANA OIL & GAS (USA) INC

## SURFACE DISTURBANCE AREA WELL PAD (0N1) EXPANSION Section 1, T8S, R97W, 6th P.M.

B.L.M. (U.S.A.)  
SW 1/4 SE 1/4

Sec. 1



### BASIS OF BEARINGS NOTE:

Basis of Bearings is the South Line of the SE 1/4 of Section 1, T8S, R97W, 6th P.M. which is taken from Global Positioning Satellite observations to bear N89°42'50"W a measured distance of 2571.60'.

Area of Proposed  
Surface Disturbance  
is 6.99 Acres

SURVEYED BY: C.D.S.	DATE SURVEYED: 11-08-10
DRAWN BY: L.C.S.	DATE DRAWN: 11-22-10
SCALE: 1" = 100'	REVISED: L.C.S. 05-25-11

**Tri State**  
Land Surveying, Inc.  
180 NORTH VERNAL AVE. VERNAL, UTAH 84078  
(435) 781-2501

SHEET  
8  
OF 11