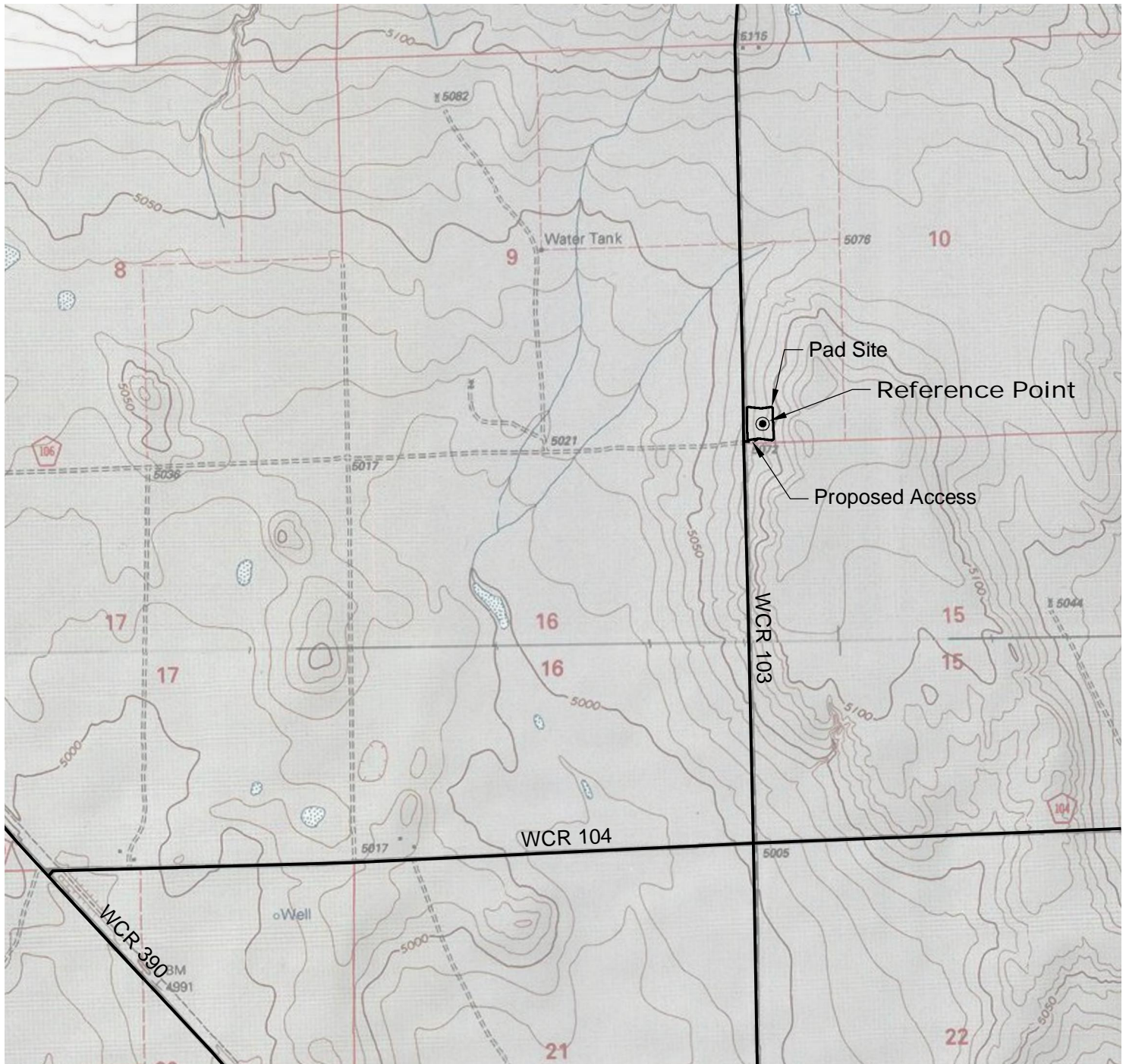


# ACCESS ROAD MAP



## DRIVING DIRECTIONS:

From Town of Keota, beginning at intersection  
of WCR 390 & WCR 103; North on WCR 390  
MP 3.5 Right on WCR 104  
MP 5.3 Left on WCR 103  
MP 6.3 Right on access onto Dietzler 10-14-9-60 Pad

5/11/11



North



Graphic Scale in Feet  
1 inch = 2000 feet



LAND SURVEYING AND MAPPING  
LAFAYETTE - WINTER PARK  
Ph 303 666 0379 Fx 303 665 6320

**CARRIZO OIL & GAS, INC**  
**DIETZLER 10-14-9-60 PAD**

**SW1/4 SW1/4 SEC. 10 T9N R60W**  
**6th PM WELD COUNTY COLORADO**