

---

**LARAMIE ENERGY II LLC EBUSINESS**

---

**SAVAGE 18-07B  
PICEANCE  
Garfield County , Colorado**

**Cement Production Casing**  
**09-Dec-2010**

**Post Job Report**

## The Road to Excellence Starts with Safety

Sold To #: 344919	Ship To #: 2822099	Quote #:	Sales Order #: 7767022
Customer: LARAMIE ENERGY II LLC EBUSINESS	Customer Rep: Clausen, Kelly		
Well Name: SAVAGE	Well #: 18-07B	API/UWI #:	
Field: PICEANCE	City (SAP): RIFLE	County/Parish: Garfield	State: Colorado
Contractor: Precision	Rig/Platform Name/Num: Precision 706		
Job Purpose: Cement Production Casing			
Well Type: Development Well	Job Type: Cement Production Casing		
Sales Person: METLI, MARSHALL	Srv Supervisor: DANIEL, EVERETT	MBU ID Emp #:	337325

## Job Personnel

HES Emp Name	Exp Hrs	Emp #	HES Emp Name	Exp Hrs	Emp #	HES Emp Name	Exp Hrs	Emp #
BROWN, TRAVIS A	6	396848	DANIEL, EVERETT Dean	6	337325	JENSEN, JESSE Robert	6	478774
LUNCEFORD, STEVEN John	6	457512	SCOLLARD, GARY R.	6	485297	BLUST, C.T.	4	386662

## Equipment

HES Unit #	Distance-1 way	HES Unit #	Distance-1 way	HES Unit #	Distance-1 way	HES Unit #	Distance-1 way
10567589C	85 mile	10867304	85 mile	10867423	85 mile	10897887	85 mile
10951248	85 mile	10995027	85 mile	10998054	85 mile		

## Job Hours

Date	On Location Hours	Operating Hours	Date	On Location Hours	Operating Hours	Date	On Location Hours	Operating Hours
12/9/10	6	6						
<b>TOTAL</b>	<b>6</b>	<b>6</b>	Total is the sum of each column separately					

## Job

Formation Name	Top	Bottom	Called Out	Date	Time	Time Zone
Formation Depth (MD)			On Location	09 - Dec - 2010	12:45	MST
Form Type		BHST	Job Started	09 - Dec - 2010	16:30	MST
Job depth MD	9300. m	Job Depth TVD	Job Completed	09 - Dec - 2010	18:36	MST
Water Depth		Wk Ht Above Floor	Departed Loc	09 - Dec - 2010	20:30	MST
Perforation Depth (MD)	From	To		09 - Dec - 2010	22:30	MST

## Well Data

Description	New / Used	Max pressure MPa	Size mm	ID mm	Weight kg/m	Thread	Grade	Top MD m	Bottom MD m	Top TVD m	Bottom TVD m
-------------	------------	------------------	---------	-------	-------------	--------	-------	----------	-------------	-----------	--------------

Sales/Rental/3<sup>rd</sup> Party (HES)

Description	Qty	Qty uom	Depth	Supplier
PLUG,CMTG,TOP,4 1/2,HWE,3.65 MIN/4.14 MA	1	EA		
PORT. DAS W/CEMWIN;ACQUIRE W/HES, ZI	1	JOB		
ADC (AUTO DENSITY CTRL) SYS, /JOB,ZI	1	JOB		

## Tools and Accessories

Type	Size	Qty	Make	Depth	Type	Size	Qty	Make	Depth	Type	Size	Qty	Make
Guide Shoe					Packer					Top Plug	4.5	1	
Float Shoe					Bridge Plug					Bottom Plug			
Float Collar					Retainer					SSR plug set			
Insert Float										Plug Container	4.5	1	
Stage Tool										Centralizers			

## Miscellaneous Materials

Gelling Agt	Conc	Surfactant	Conc	Acid Type	Qty	Conc	%
Treatment Fld	Conc	Inhibitor	Conc	Sand Type	Size		Qty

Fluid Data									
Stage/Plug #: 1									
Fluid #	Stage Type	Fluid Name	Qty	Qty uom	Mixing Density kg/m3	Yield m3/sk	Mix Fluid m3/tonne	Rate m3/min	Total Mix Fluid m3/tonne
1	Water Spacer		10	bbl	8.33	.0	.0	.0	
2	Mud Flush III	MUD FLUSH III - SBM (528788)	20	bbl	8.4	.0	.0	.0	
3	Water Spacer		10	bbl	8.33	.0	.0	.0	
4	EconoCem Lead Slurry	ECONOCHEM (TM) SYSTEM (452992)	600	sacks	11.5	2.3	12.88	6.0	12.88
12.88 Gal		FRESH WATER							
5	HalCem Tail Slurry	HALCEM (TM) SYSTEM (452986)	500	sacks	13.5	1.74	7.6	6.0	7.6
7.6 Gal		FRESH WATER							
6	KCL Displacement		143.3	bbl	.	.0	.0	.0	
Calculated Values		Pressures		Volumes					
Displacement	143.3	Shut In: Instant		Lost Returns		Cement Slurry	400.7	Pad	
Top Of Cement		5 Min		Cement Returns		Actual Displacement	143.3	Treatment	
Frac Gradient		15 Min		Spacers	40	Load and Breakdown		Total Job	
Rates									
Circulating	6	Mixing	7	Displacement	8	Avg. Job	7		
Cement Left In Pipe	Amount	44.7 ft	Reason	Shoe Joint					
Frac Ring # 1 @	ID	Frac ring # 2 @	ID	Frac Ring # 3 @	ID	Frac Ring # 4 @	ID		
The Information Stated Herein Is Correct				Customer Representative Signature					

*The Road to Excellence Starts with Safety*

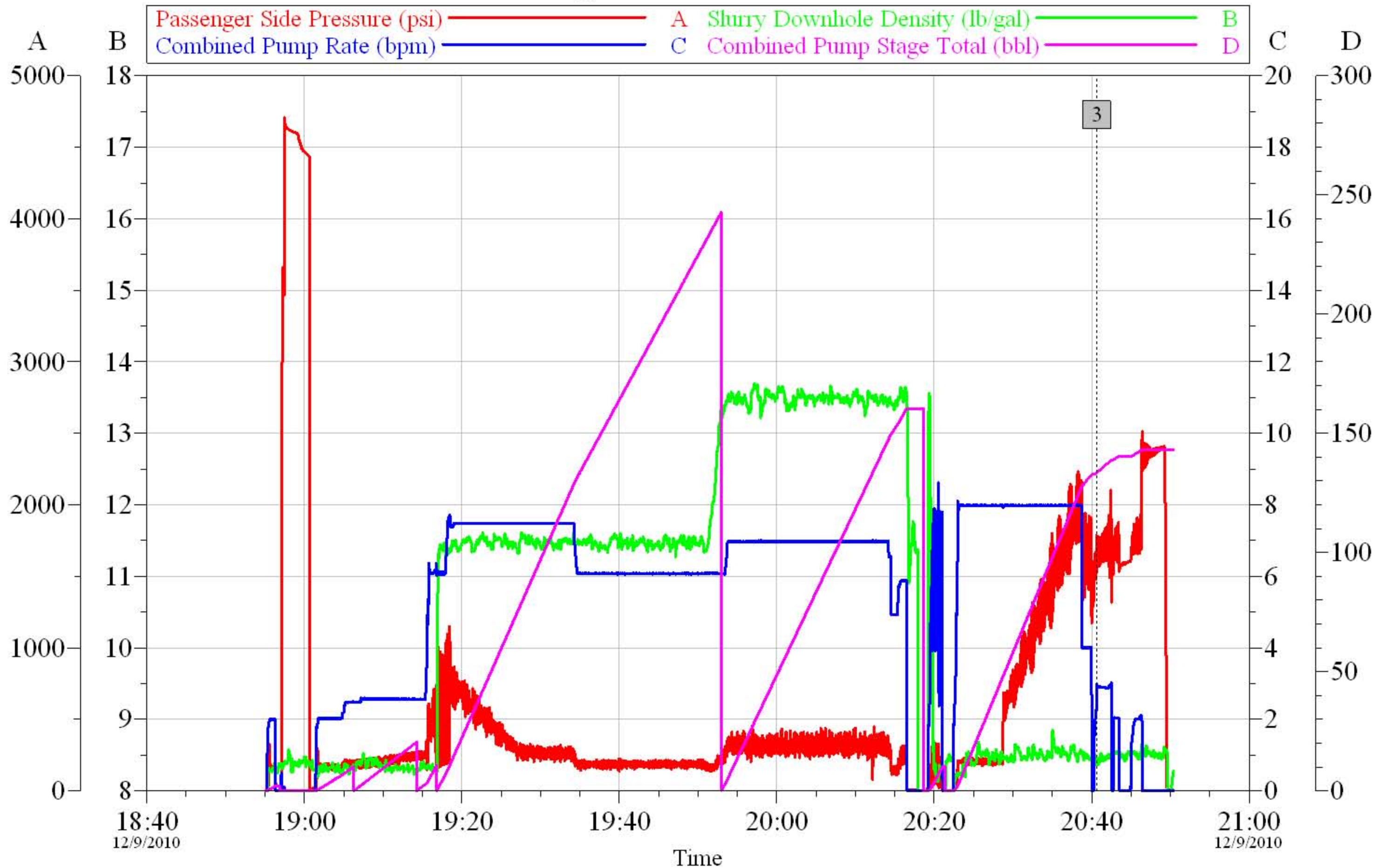
<b>Sold To #:</b> 344919	<b>Ship To #:</b> 2822099	<b>Quote #:</b>	<b>Sales Order #:</b> 7767022
<b>Customer:</b> LARAMIE ENERGY II LLC EBUSINESS		<b>Customer Rep:</b> Clausen, Kelly	
<b>Well Name:</b> SAVAGE		<b>Well #:</b> 18-07B	<b>API/UWI #:</b>
<b>Field:</b> PICEANCE	<b>City (SAP):</b> RIFLE	<b>County/Parish:</b> Garfield	<b>State:</b> Colorado
<b>Legal Description:</b>			
<b>Lat:</b>		<b>Long:</b>	
<b>Contractor:</b> Precision		<b>Rig/Platform Name/Num:</b> Precision 706	
<b>Job Purpose:</b> Cement Production Casing			<b>Ticket Amount:</b>
<b>Well Type:</b> Development Well		<b>Job Type:</b> Cement Production Casing	
<b>Sales Person:</b> METLI, MARSHALL		<b>Srvc Supervisor:</b> DANIEL, EVERETT	<b>MBU ID Emp #:</b> 337325

Activity Description	Date/Time	Cht #	Rate m3/min	Volume m3		Pressure MPa		Comments
				Stage	Total	Tubing	Casing	
Call Out	12/09/2010 12:45							
Depart Yard Safety Meeting	12/09/2010 14:30							
Depart from Service Center or Other Site	12/09/2010 14:35							Checked out two 660s, One still being loaded, Pump coming from previous location
Arrive at Location from Service Center	12/09/2010 16:30							Arrived .5 hr. late. Did not start charging time until 1630
Assessment Of Location Safety Meeting	12/09/2010 16:35							
Consult with Co. Rep.	12/09/2010 16:40							Verified calculations and materials on location including H2O and Cement totals
Safety Meeting - Pre Rig-Up	12/09/2010 16:45							Discussed job procedures and safety issues
Rig-Up Equipment	12/09/2010 17:00							
Rig-Up Completed	12/09/2010 18:00							
Safety Meeting - Pre Job	12/09/2010 18:15							Discussed job procedures and safety issues
Start Job	12/09/2010 18:36							
Prime Pumps	12/09/2010 18:36		2	2			218.0	Fresh Water
Test Lines	12/09/2010 18:38		0.5	0.1			4500.0	Fresh Water
Pump Spacer 1	12/09/2010 18:43		2.5	10			182.0	Fresh Water

Activity Description	Date/Time	Cht #	Rate m3/min	Volume m3		Pressure MPa		Comments
				Stage	Total	Tubing	Casing	
Pump Spacer 2	12/09/2010 18:48		2.5	20			187.0	Mud Flush III
Pump Spacer 1	12/09/2010 18:56		6	10			456.0	Fresh Water
Pump Lead Cement	12/09/2010 18:58		7.5	245.7			780.0	600 sks of EconoCem @ 11.5# - 2.3 yield - 12.88 H2O requirement
Pump Tail Cement	12/09/2010 19:35		7	154.9			325.0	500 sks of HalCem @ 13.5#-1.74 Yield-7.60 H2O Re
Shutdown	12/09/2010 20:00							
Clean Lines	12/09/2010 20:00							
Drop Top Plug	12/09/2010 20:05							
Pump Displacement	12/09/2010 20:07		8	143.3			1994.0	KCL Displacement
Slow Rate	12/09/2010 20:29		3	133			1800.0	Slowed to 4 bpm
Bump Plug	12/09/2010 20:30		3	143.3			2365.0	Bumped Plug @ calculated displacement and 500 psi over
Check Floats	12/09/2010 20:36							Floats Held
End Job	12/09/2010 20:36							
Safety Meeting - Pre Rig-Down	12/09/2010 20:40							Discussed job procedures and safety issues
Rig-Down Equipment	12/09/2010 21:00							
Rig-Down Completed	12/09/2010 22:00							
Safety Meeting - Departing Location	12/09/2010 22:15							
Depart Location for Service Center or Other Site	12/09/2010 22:30							

# Laramie II

## Savage 18-07B Production



Customer: Laramie II	Job Date: 09-Dec-2010	Sales Order #: 7767022
Well Description: Savage 18-07B	Job Type: Production	ADC Used: Yes
Company Rep. Cory Claussen	Cement Supervisor: Dean Daniel	Elite #/Operator: 3/Travis Brown