

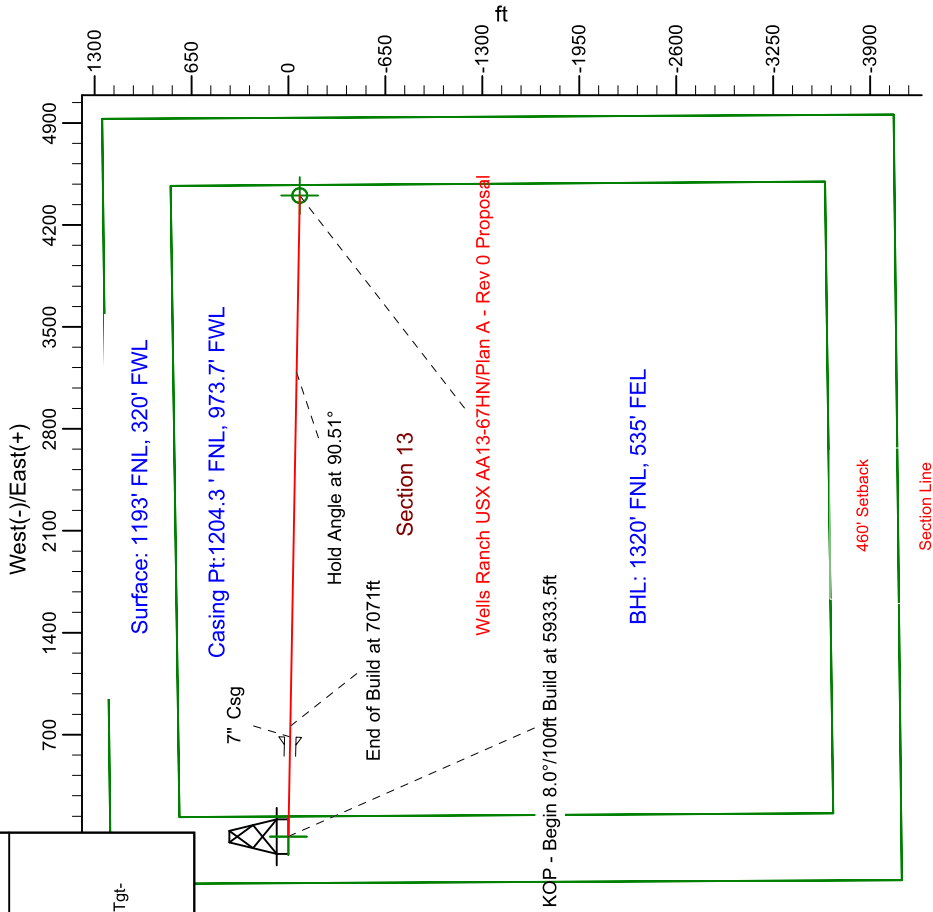
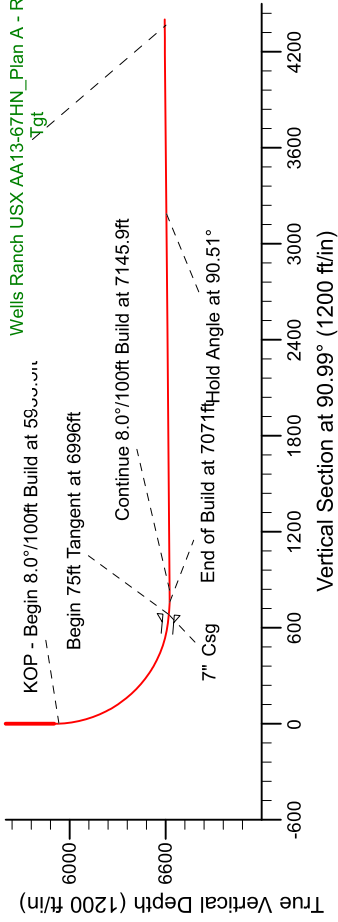
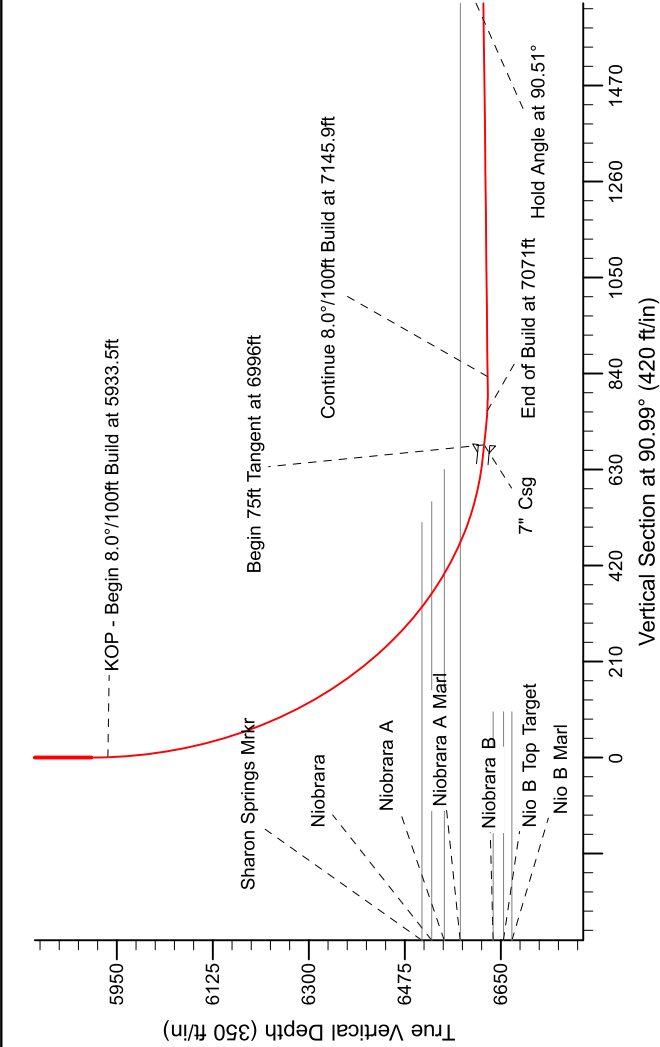
Project: Weld County Colorado (NAD 83)  
Site: Sec. 13, T6N, R63W  
Well: Wells Ranch USX AA13-67HN  
Wellbore: Plan A - Rev 0 (PERMITTING PLAN ONLY)  
Design: Plan A - Rev 0 Proposal

# Noble Energy



## SECTION DETAILS

Sec	MD	Inc	Azi	TVD	+N/-S	+E/-W	Dleg	TFace	VSection	Target
1	0.0	0.00	0.00	0.0	0.0	0.0	0.00	0.00	0.0	
2	5903.3	0.00	0.00	5903.3	0.0	0.0	0.00	0.00	0.0	
3	6965.8	85.00	90.99	6616.8	-11.3	653.7	8.00	90.99	653.8	
4	7040.8	85.00	90.99	6623.3	-12.6	728.4	0.00	0.00	728.5	
5	7109.7	90.51	90.99	6626.0	-13.8	797.2	8.00	0.00	797.3	
6	10714.8	90.51	90.98	6593.9	-75.8	4401.6	0.00	-93.29	4402.3	Wells Ranch USX AA13-67HN_Plan A - Rev 0_BHL Tgt-



WELL DETAILS: Wells Ranch USX AA13-67HN(NAD83 Geodetic System)			
Northing	Ground Level:	Eastings	Longitude
433876.56	4836.0	1008240.43	104° 23' 35.088 W
Plan: Plan A - Rev 0 Proposal (Wells Ranch USX AA13-67HN/Plan A - Rev 0 (PERMITTING PLAN ONLY))			
Created By: Erasmo Mendoza		Date: 12:00, May 16 2011	

