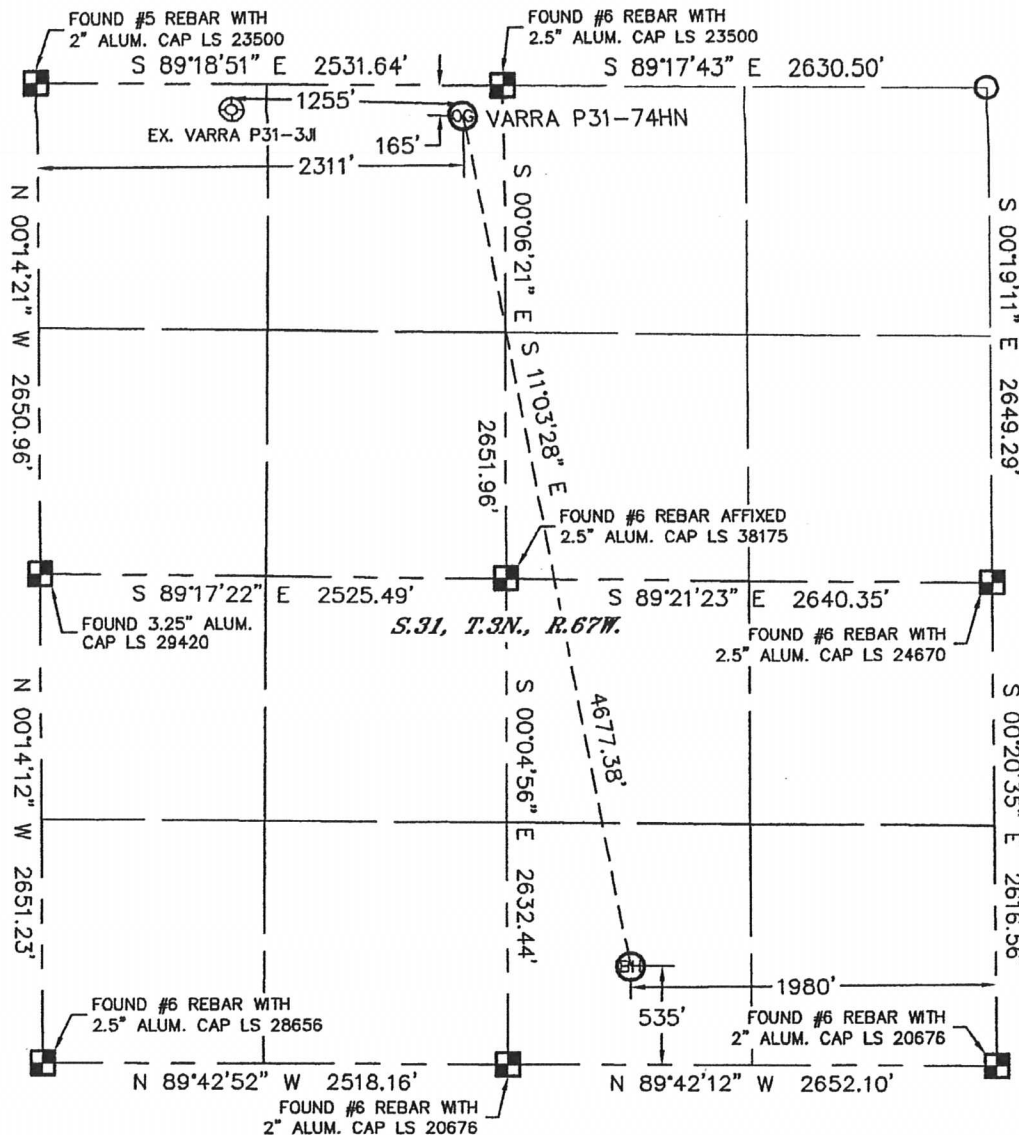


WELL LOCATION CERTIFICATE

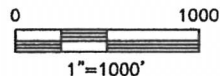
THIS MAP DOES NOT REPRESENT A BOUNDARY SURVEY

SECTION: 31
TOWNSHIP: 3N
RANGE: 67W



In accordance with a request from Erik Van Decar with Noble Energy Inc., Lat40°, Inc. has determined the surface location of the VARRA P31-74HN to be 165' from the NORTH line and 2311' from the WEST line and the bottom hole to be 535' from the SOUTH line and 1980' from the EAST line as measured at right angles from the section lines of Section 31, Township 3 North, Range 67 West of the Sixth Principal Meridian, County of Weld, State of Colorado.

I hereby state that this Well Location Certificate was prepared by me, or under my direct supervision, that the fieldwork was completed on 3/18/11, for and on behalf of Noble Energy Inc. That this is not a Land Survey Plat or an Improvement Survey Plat, and that it is not to be relied upon for establishment of fence, building, or other future improvement lines.



NOTE:

- 1) Bearings shown are Grid Bearings of the Colorado State Plane Coordinate System, North Zone, North American Datum 1983/2007. The lineal dimensions as contained herein are based upon the "U.S. Survey Foot."
- 2) Ground elevations are based on an observed GPS elevation (NAVD 1988 DATUM).
- 3) NEAREST EXISTING WELL: VARRA P31-3J, 1255'
- 4) IMPROVEMENTS: See LOCATION DRAWING for all visible improvements within 400' of disturbed area.
- 5) SURFACE USE: PASTURE
- 6) INSTRUMENT OPERATOR: ADAM KELLY

SURFACE LOCATION
LATITUDE: 40.18945°N
LONGITUDE: 104.93350°W
PDOP: 1.4
ELEV: 4805'
1/4, 1/4: NE1/4NW1/4
NEAREST PROPERTY LINE: 165' NORTH

BOTTOM HOLE
LATITUDE: 40.17684°N
LONGITUDE: 104.93039°W

NOTE

According to Colorado law, you must commence any legal action based upon any defect in this W.L.C. within three years after you discover such defect. In no event, may any action based upon any defect in this survey be commenced more than ten years after the date of the certificate shown hereon. (13-80-105 C.R.S.)

LEGEND

- = ALIQUOT MONUMENT AS DESCRIBED
- = CALCULATED POSITION

Brian T. Brinkman—On behalf of Lat40°, Inc.
Colorado Licensed Professional
Land Surveyor No. 38175

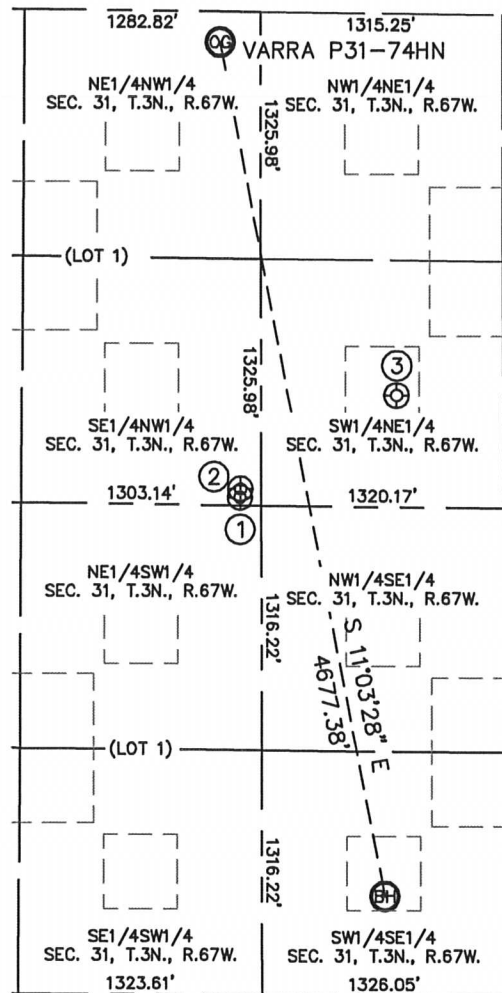
PROJECT#: 2011053



SITE SKETCH

VARRA P31-74HN

SECTION: 31
TOWNSHIP: 3N
RANGE: 67W



①

VARRA COMPANIES 31-6L
SE1/4NW1/4
2609' FNL
2410' FWL
LAT-40.18274°N
LONG-104.93316°W
PDOP:1.5
ELEV: 4807'

②

GOULD P31-11J
SE1/4NW1/4
2563' FNL
2413' FWL
LAT-40.18286°N
LONG-104.93315°W
PDOP:1.5
ELEV: 4807'

③

NELSON 31-7J7
SW1/4NE1/4
2049' FNL
1900' FEL
LAT-40.18423°N
LONG-104.93010°W
PDOP:1.4
ELEV: 4804'

