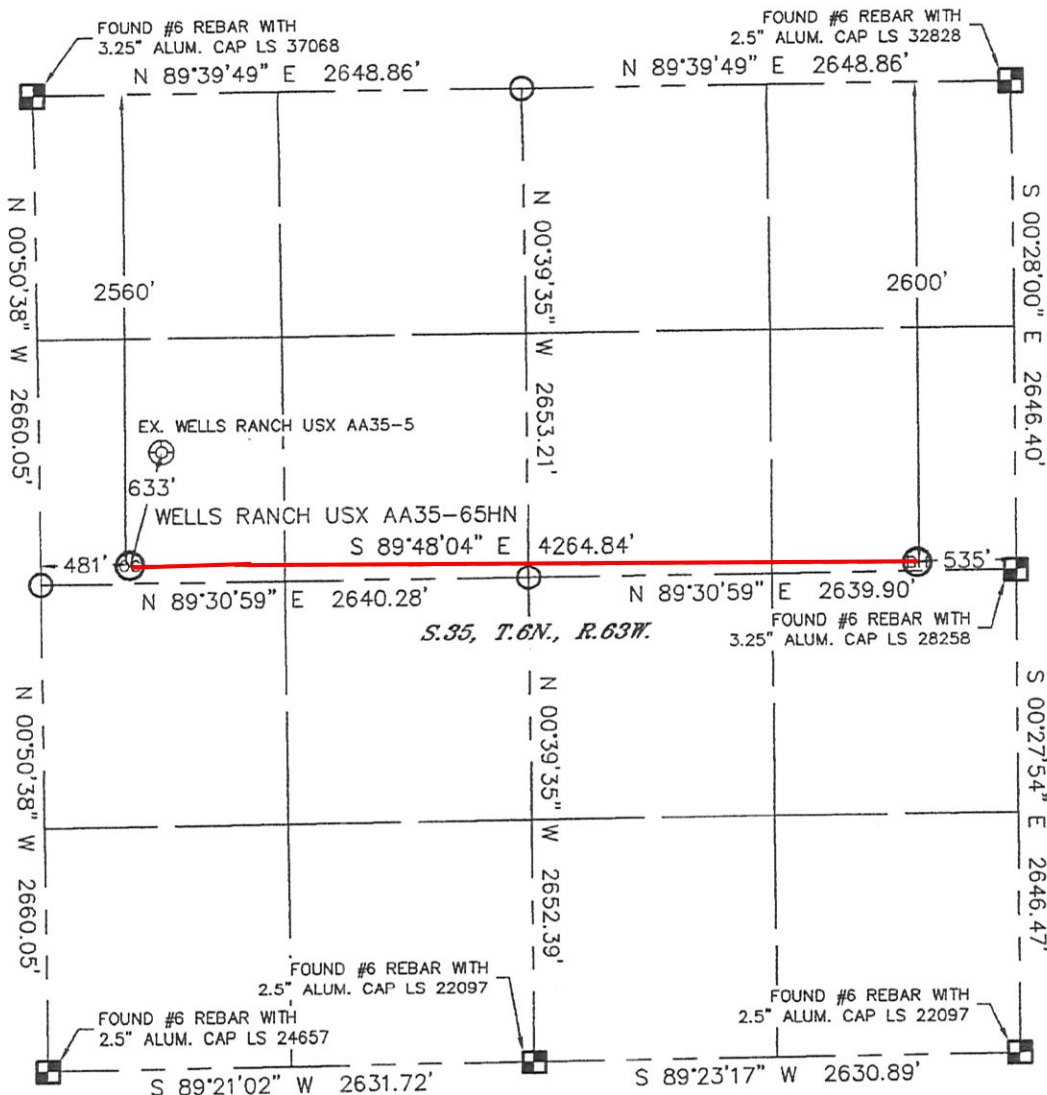


WELL LOCATION CERTIFICATE

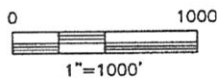
SECTION: 35
TOWNSHIP: 6N
RANGE: 63W

THIS MAP DOES NOT REPRESENT A BOUNDARY SURVEY



In accordance with a request from Sean Casper with Noble Energy Inc. Lat40°, Inc. has determined the surface location of the WELLS RANCH USX AA35-65HN to be 2560' from the NORTH line and 481' from the WEST line and the bottom hole to be 2600' from the NORTH line and 535' from the EAST line as measured at right angles from the section lines of Section 35, Township 6 North, Range 63 West of the Sixth Principal Meridian, County of Weld, State of Colorado.

I hereby state that this Well Location Certificate was prepared by me, or under my direct supervision, that the fieldwork was completed on 4/1/11, for and on behalf of Noble Energy Inc. That this is not a Land Survey Plat or an Improvement Survey Plat, and that it is not to be relied upon for establishment of fence, building, or other future improvement lines.



NOTE:

- 1) Bearings shown are Grid Bearings of the Colorado State Plane Coordinate System, North Zone, North American Datum 1983/2007. The lineal dimensions as contained herein are based upon the "U.S. Survey Foot."
- 2) Ground elevations are based on an observed GPS elevation (NAVD 1988 DATUM).
- 3) NEAREST EXISTING WELL: WELLS RANCH USX AA35-5 633'
- 4) IMPROVEMENTS: See LOCATION DRAWING for all visible improvements within 400' of disturbed area.
- 5) SURFACE USE: RANGE LAND
- 6) INSTRUMENT OPERATOR: ADAM KELLY

SURFACE LOCATION
LATITUDE: 40.44321°N
LONGITUDE: 104.41195°W
PDOP: 1.6
ELEV: 4792'
1/4, 1/4: SW1/4NW1/4
NEAREST PROPERTY LINE: 481' WEST

BOTTOM HOLE
LATITUDE: 40.44302°N
LONGITUDE: 104.39663°W

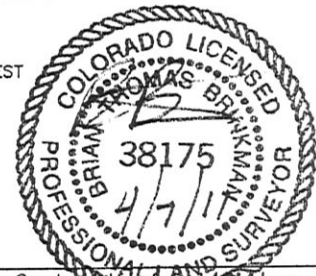
NOTE

According to Colorado law, you must commence any legal action based upon any defect in this W.L.C. within three years after you discover such defect. In no event, may any action based upon any defect in this survey be commenced more than ten years after the date of the certificate shown hereon. (13-80-105 C.R.S.)

LEGEND

- = ALIQUOT MONUMENT AS DESCRIBED
- = CALCULATED POSITION

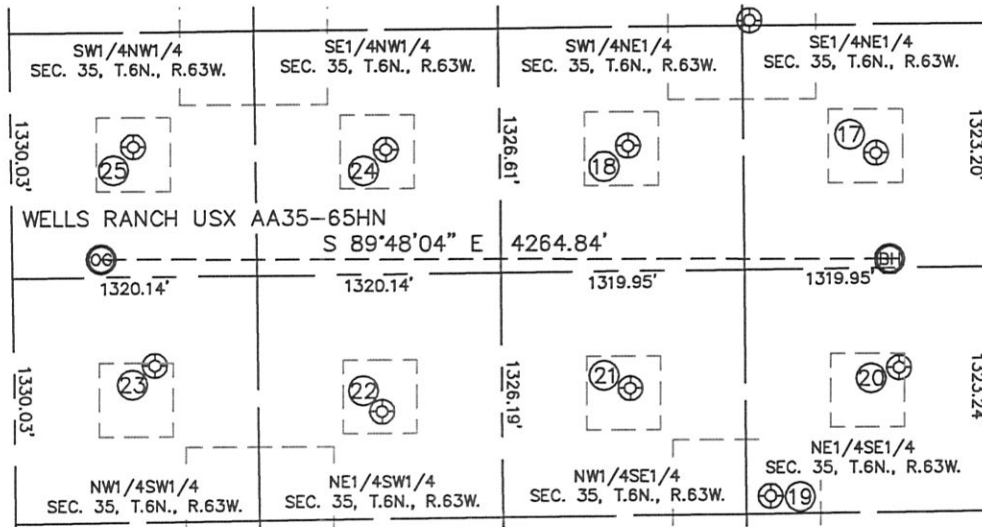
Brian T. Brinkman—On behalf of Lat40°, Inc.
Colorado Licensed Professional
Land Surveyor No. 38175 PROJECT#: 2011080



SITE SKETCH

WELLS RANCH USX AA35-65HN

SECTION: 35
TOWNSHIP: 6N
RANGE: 63W



17

WELLS RANCH USX
AA35-08
SE1/4NE1/4
2023' FNL
603' FEL
LAT-40.44461°N
LONG-104.39687°W
PDOP: 1.2
ELEV: 4774'

18

WELLS RANCH USX
AA35-7
SW1/4NE1/4
1972' FNL
1946' FEL
LAT-40.44477°N
LONG-104.40169°W
PDOP: 2.0
ELEV: 4774'

19

WELLS RANCH USX
AA35-23
NE1/4SE1/4
1419' FSL
1187' FEL
LAT-40.43953°N
LONG-104.39900°W
PDOP: 1.7
ELEV: 4757'

20

WELLS RANCH USX
AA35-09
NE1/4SE1/4
2107' FSL
487' FEL
LAT-40.44141°N
LONG-104.39647°W
PDOP: 1.8
ELEV: 4754'

21

WELLS RANCH USX
AA35-10
NW1/4SE1/4
2015' FSL
1943' FEL
LAT-40.44116°N
LONG-104.40170°W
PDOP: 1.3
ELEV: 4745'

22

WELLS RANCH USX
AA35-11
NE1/4SW1/4
1910' FSL
1988' FWL
LAT-40.44088°N
LONG-104.40653°W
PDOP: 1.5
ELEV: 4770'

23

WELLS RANCH USX
AA35-12
NW1/4SW1/4
2178' FSL
763' FWL
LAT-40.44162°N
LONG-104.41093°W
PDOP: 1.5
ELEV: 4785'

24

WELLS RANCH USX
AA35-06
SE1/4NW1/4
1979' FNL
2027' FWL
LAT-40.44478°N
LONG-104.40640°W
PDOP: 1.3
ELEV: 4769'

25

WELLS RANCH USX
AA35-5
SW1/4NW1/4
1952' FNL
662' FWL
LAT-40.44488°N
LONG-104.41130°W
PDOP: 1.3
ELEV: 4790'

