

---

# **OXY GRAND JUNCTION EBUSINESS**

---

**CC 697-09-09**  
**GARND VAILLEY**  
Garfield County , Colorado

**Cement Surface Casing**  
08-Mar-2011

**Post Job Summary**

## The Road to Excellence Starts with Safety

<b>Sold To #:</b> 344034		<b>Ship To #:</b> 2841351		<b>Quote #:</b>		<b>Sales Order #:</b> 7840284	
<b>Customer:</b> OXY GRAND JUNCTION EBUSINESS				<b>Customer Rep:</b>			
<b>Well Name:</b> CC			<b>Well #:</b> 697-09-09			<b>API/UWI #:</b>	
<b>Field:</b> GARND VAILLEY		<b>City (SAP):</b> PARACHUTE		<b>County/Parish:</b> Garfield		<b>State:</b> Colorado	
<b>Lat:</b> N 39.542 deg. OR N 39 deg. 32 min. 30.995 secs.				<b>Long:</b> W 108.238 deg. OR W -109 deg. 45 min. 42.62 secs.			
<b>Contractor:</b> OXY			<b>Rig/Platform Name/Num:</b> WHITE MOUNTAIN 272				
<b>Job Purpose:</b> Cement Surface Casing							
<b>Well Type:</b> Development Well			<b>Job Type:</b> Cement Surface Casing				
<b>Sales Person:</b> DUNNING, DUSTIN			<b>Srvc Supervisor:</b> FEUERBORN, JOHN			<b>MBU ID Emp #:</b> 381677	

### Job Personnel

HES Emp Name	Exp Hrs	Emp #	HES Emp Name	Exp Hrs	Emp #	HES Emp Name	Exp Hrs	Emp #
FEUERBORN, JOHN William	19	381677	HAYES, JESSE Doug	19	403601	LYNCH, JACK William	18	483039
ROSE, BENJAMIN Keith	19	487022	SALAZAR, PAUL Omar	19	445614	ZUMWALT, ORVILLE Raymond	19	398157

### Equipment

HES Unit #	Distance-1 way	HES Unit #	Distance-1 way	HES Unit #	Distance-1 way	HES Unit #	Distance-1 way

### Job Hours

Date	On Location Hours	Operating Hours	Date	On Location Hours	Operating Hours	Date	On Location Hours	Operating Hours
3/7/11	.5	0	3/8/11	18.5	7			

<b>TOTAL</b>	Total is the sum of each column separately							
--------------	--	--	--	--	--	--	--	--

### Job

### Job Times

Formation Name					Date	Time	Time Zone
<b>Formation Depth (MD)</b>	<b>Top</b>	<b>Bottom</b>			<b>Called Out</b>	07 - Mar - 2011	10:00 MST
<b>Form Type</b>	BHST				<b>On Location</b>	07 - Mar - 2011	23:50 MST
<b>Job depth MD</b>	2725. ft	<b>Job Depth TVD</b>	2725. ft	<b>Job Started</b>	08 - Mar - 2011	03:34	MST
<b>Water Depth</b>	<b>Wk Ht Above Floor</b>		4. ft	<b>Job Completed</b>	08 - Mar - 2011	18:44	MST
<b>Perforation Depth (MD)</b>	<b>From</b>	<b>To</b>			<b>Departed Loc</b>	08 - Mar - 2011	21:00 MST

### Well Data

Description	New / Used	Max pressure psig	Size in	ID in	Weight lbm/ft	Thread	Grade	Top MD ft	Bottom MD ft	Top TVD ft	Bottom TVD ft
-------------	------------	-------------------	---------	-------	---------------	--------	-------	-----------	--------------	------------	---------------

### Sales/Rental/3<sup>rd</sup> Party (HES)

Description	Qty	Qty uom	Depth	Supplier
R/A DENSOMETER W/CHART RECORDER,/JOB,ZI	1	JOB		
PORT. DATA ACQUIS. W/OPTICEM RT W/HES	1	EA		
ADC (AUTO DENSITY CTRL) SYS, /JOB,ZI	1	JOB		

### Tools and Accessories

Type	Size	Qty	Make	Depth	Type	Size	Qty	Make	Depth	Type	Size	Qty	Make
Guide Shoe					Packer					Top Plug	9.625	1	
Float Shoe					Bridge Plug					Bottom Plug			
Float Collar					Retainer					SSR plug set			
Insert Float										Plug Container	9.625	1	
Stage Tool										Centralizers			

### Miscellaneous Materials

Gelling Agt	Conc	Surfactant	Conc	Acid Type	Qty	Conc	%
Treatment Fld	Conc	Inhibitor	Conc	Sand Type	Size		Qty

Fluid Data									
Stage/Plug #: 1									
Fluid #	Stage Type	Fluid Name	Qty	Qty uom	Mixing Density lbm/gal	Yield ft <sup>3</sup> /sk	Mix Fluid Gal/sk	Rate bbl/min	Total Mix Fluid Gal/sk
1	Water Spacer		20	bbl	8.33	.0	.0	.0	
2	Gel Spacer		20	bbl	.	.0	.0	.0	
3	Water Spacer		20	bbl	.	.0	.0	.0	
4	Lead Cement	VERSACEM (TM) SYSTEM (452010)	1029	sacks	12.3	2.33	12.62		12.62
		12.62 Gal	FRESH WATER						
5	Tail Cement	VERSACEM (TM) SYSTEM (452010)	178	sacks	12.8	2.07	10.67		10.67
		10.67 Gal	FRESH WATER						
6	Displacement		204.6	bbl	.	.0	.0	.0	
7	Topout Cement	HALCEM (TM) SYSTEM (452986)	450	sacks	12.5	1.97	10.96		10.96
		10.96 Gal	FRESH WATER						
Calculated Values		Pressures		Volumes					
Displacement	204.6	Shut In: Instant		Lost Returns		Cement Slurry	651	Pad	
Top Of Cement	0	5 Min		Cement Returns	1	Actual Displacement	204.6	Treatment	
Frac Gradient		15 Min		Spacers	60	Load and Breakdown		Total Job	
Rates									
Circulating		Mixing		6	Displacement	6	Avg. Job		
Cement Left In Pipe	Amount	44.5 ft	Reason	Shoe Joint					
Frac Ring # 1 @	ID		Frac ring # 2 @	ID		Frac Ring # 3 @	ID	Frac Ring # 4 @	ID
The Information Stated Herein Is Correct				Customer Representative Signature					

*The Road to Excellence Starts with Safety*

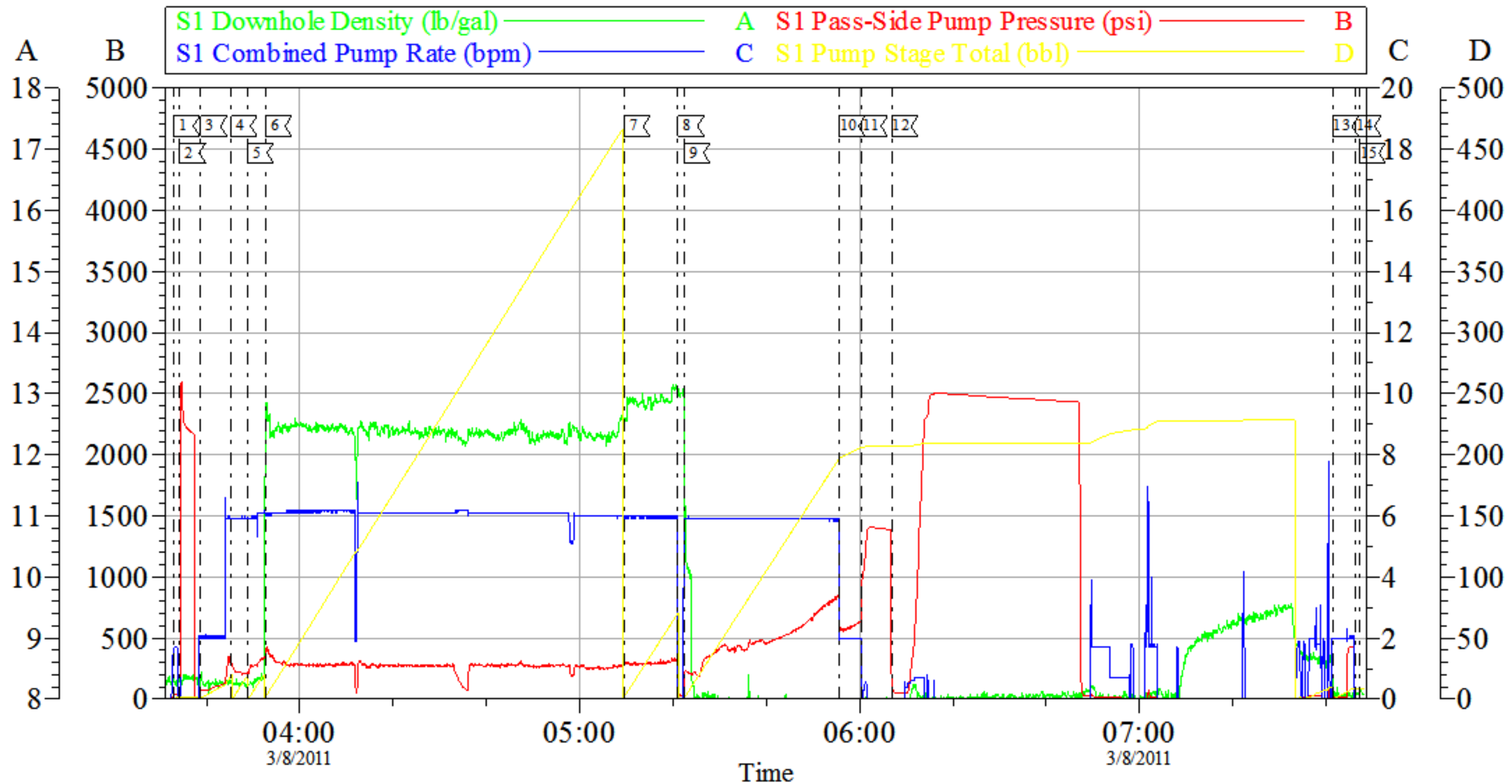
<b>Sold To #:</b> 344034		<b>Ship To #:</b> 2841351		<b>Quote #:</b>		<b>Sales Order #:</b> 7840284	
<b>Customer:</b> OXY GRAND JUNCTION EBUSINESS				<b>Customer Rep:</b>			
<b>Well Name:</b> CC			<b>Well #:</b> 697-09-09			<b>API/UWI #:</b>	
<b>Field:</b> GARND VAILLEY		<b>City (SAP):</b> PARACHUTE		<b>County/Parish:</b> Garfield		<b>State:</b> Colorado	
<b>Legal Description:</b>							
<b>Lat:</b> N 39.542 deg. OR N 39 deg. 32 min. 30.995 secs.				<b>Long:</b> W 108.238 deg. OR W -109 deg. 45 min. 42.62 secs.			
<b>Contractor:</b> OXY			<b>Rig/Platform Name/Num:</b> WHITE MOUNTAIN 272				
<b>Job Purpose:</b> Cement Surface Casing						<b>Ticket Amount:</b>	
<b>Well Type:</b> Development Well			<b>Job Type:</b> Cement Surface Casing				
<b>Sales Person:</b> DUNNING, DUSTIN			<b>Srvc Supervisor:</b> FEUERBORN, JOHN			<b>MBU ID Emp #:</b> 381677	

Activity Description	Date/Time	Cht #	Rate bbl/min	Volume bbl		Pressure psig		Comments
				Stage	Total	Tubing	Casing	
Depart Yard Safety Meeting	03/07/2011 12:00							
Crew Leave Yard	03/07/2011 12:15							
Other	03/07/2011 20:30							RIG CIRCULATING ON BOTTOM
Arrive At Loc	03/07/2011 23:40							
Safety Meeting - Assessment of Location	03/08/2011 00:10							
Other	03/08/2011 00:20							SPOT EQUIPMENT
Pre-Rig Up Safety Meeting	03/08/2011 00:30							
Rig-Up Equipment	03/08/2011 00:35							
Pre-Job Safety Meeting	03/08/2011 03:00							
Start Job	03/08/2011 03:32							
Test Lines	03/08/2011 03:34			0				2500psi ON TRUCK AND LINES
Pump Spacer 1	03/08/2011 03:38		6	20			132.0	H2O
Pump Spacer 1	03/08/2011 03:45		6	20			300.0	LGC GEL SPACER
Pump Spacer 1	03/08/2011 03:48		6	20			230.0	H2O
Pump Lead Cement	03/08/2011 03:52		6	427			320.0	1029sks PUMPED AT 12.3ppg 2.33y 12.67wr BULK HANDS WHERE TAPPING WRONG TIER HAD QUICK DENSITY DROP AT SWAP OF FIRST TIER

Activity Description	Date/Time	Cht #	Rate bbl/min	Volume bbl		Pressure psig		Comments
				Stage	Total	Tubing	Casing	
Pump Tail Cement	03/08/2011 05:09		6	65.6			295.0	178sks PUMPED AT 12.8ppg 2.07y 10.67wr
Drop Top Plug	03/08/2011 05:21							PLUG AWAY
Pump Displacement	03/08/2011 05:22		6				830.0	H2O
Other	03/08/2011 05:55		2	196			640.0	SLOW RATE
Bump Plug	03/08/2011 06:00		2	206.4			1350.0	
Check Floats	03/08/2011 06:06							HOLDING
Other	03/08/2011 06:08						2500.0	PRESSURE TEST CASING HELD FOR 30 MINUTES
Other	03/08/2011 07:41		2	10			400.0	PUMP SUGAR WATER DOWN PARISITE
Other	03/08/2011 07:47							GET READY TO TOP OUT
Pump Spacer 1	03/08/2011 12:06		0.5	0.5			20.0	CHECK LINES TO MAKE SURE NOT FROZEN
Pump Tail Cement	03/08/2011 12:10		2	25			20.0	PUMP TOP OUT 71sks PUMPED AT 12.5ppg 1.97y 10.96wr
Shutdown	03/08/2011 12:22							CEMENT HEAD PACKED OFF FIXED AND PUMPED REST OF FIRST TOP OUT
Pump Spacer 1	03/08/2011 12:41		0.5	0.5			20.0	CHECK LINES TO MAKE SURE CEMENT NOT SET UP
Pump Tail Cement	03/08/2011 12:48		2	25			20.0	PUMP REMANDER OF FIRST TOP OUT 71sks PUMPED AT 12.5ppg 1.97y 10.96wr
Shutdown	03/08/2011 13:05							GET READY FOR SECOND TOP OUT
Pump Spacer 1	03/08/2011 14:39		0.5	0.5			20.0	H2O CHECK LINES
Pump Tail Cement	03/08/2011 14:45		0.4	72.9			20.0	208sks PUMPED AT 12.5ppg 1.97y 10.96wr AT 15:30 COULDN'T GET CEMENT TO MOVE FOR A FEW MINUTES

Activity Description	Date/Time	Cht #	Rate bbl/ min	Volume bbl		Pressure psig		Comments
				Stage	Total	Tubing	Casing	
Shutdown	03/08/2011 16:26							
Pump Spacer 1	03/08/2011 18:30		0.5	0.5			20.0	H2O TO CHECK LINES
Pump Tail Cement	03/08/2011 18:33		2	35			20.0	100sks PUMPED AT 12.5ppg 1.97y 10.96wr 1 BBLS TO SURFACE
Shutdown	03/08/2011 18:43							
End Job	03/08/2011 18:44							JOB COMPLETE 11 ADD HOURS DIDN'T START TIME TILL CREW WAS ON LOCATION WE WERE LATE DUE TO BAD ROAD CONDITIONS.
Post-Job Safety Meeting (Pre Rig-Down)	03/08/2011 18:55							
Safety Meeting - Departing Location	03/08/2011 20:45							
Crew Leave Location	03/08/2011 21:00							

# OXY SURFACE



Local Event Log					
1	START JOB	03:32:58	2	TEST LINES	03:34:15
3	PUMP SPACER	03:38:47	4	PUMP GEL SPACER	03:45:14
5	PUMP SPACER	03:48:47	6	PUMP LEAD CEMENT	03:52:38
7	PUMP TAIL CEMENT	05:09:25	8	DROP PLUG	05:21:02
9	PUMP DISPLACEMENT	05:22:19	10	SLOW RATE	05:55:32
11	BUMP PLUG	06:00:22	12	CHECK FLOATS	06:06:49
13	PUMP PARISITE	07:41:18	14	SHUT DOWN	07:46:08
15	GET READY TO TOP OUT	07:47:07			

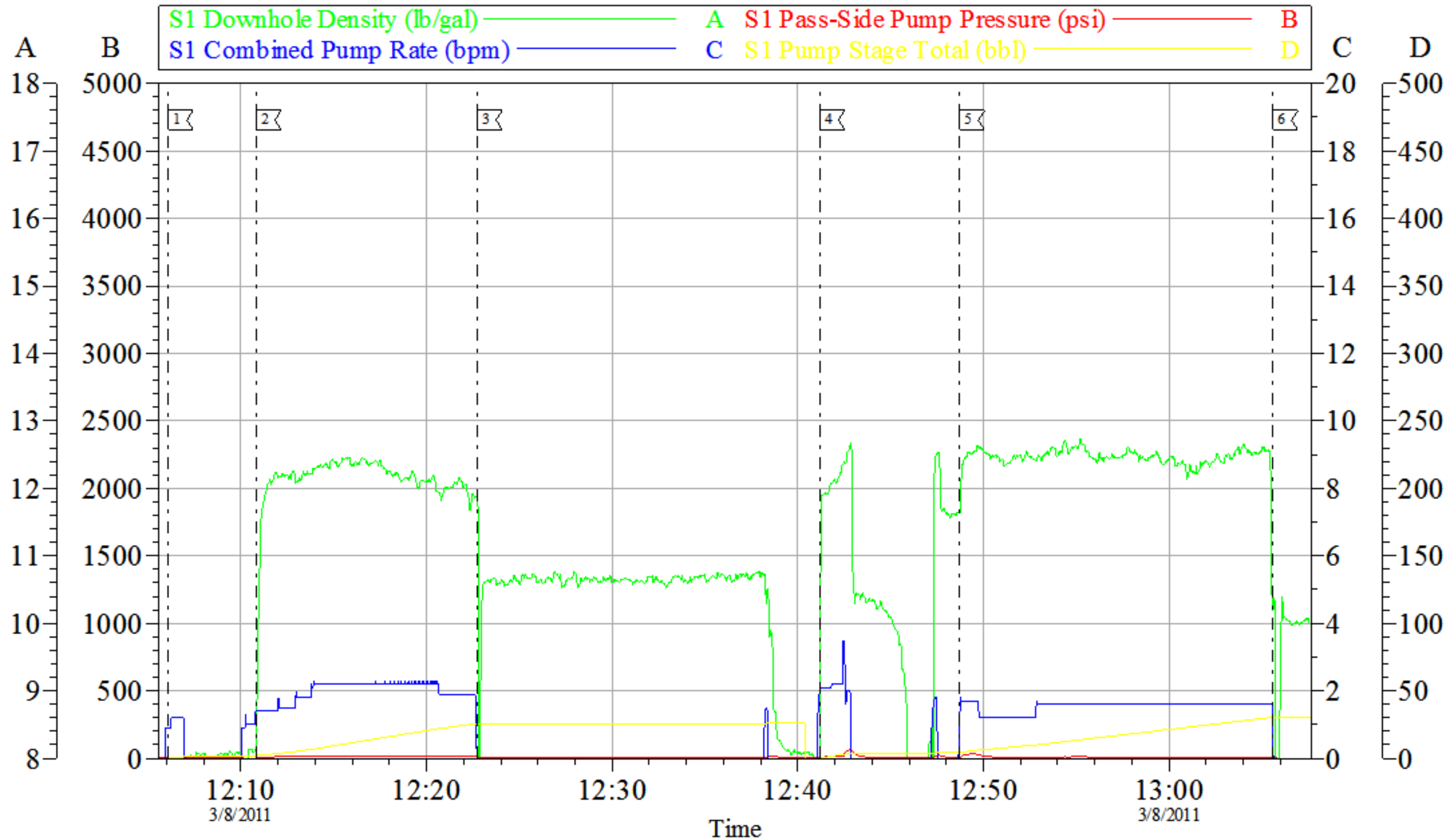
Customer: OXY  
Well Description: CC 697-09-09  
Company Rep: TERRY

Job Date: 08-Mar-2011  
Job Type: SURFACE  
Cement Supervisor: JOHN FEUERBORN

Sales Order #: 7840284  
ADC Used: YES  
Elite #:2 PAUL SALAZAR

OptiCem v6.4.0  
08-Mar-11 07:52

# OXY TOP OUT



## Local Event Log

1 CHECK LINES FREE (H2O)	12:06:05	2 PUMP TOP OUT	12:10:49	3 SHUT DOWN CEMENT HEAD PACKED	12:22:44
4 CHECK LINES	12:41:10	5 PUMP TOP OUT	12:48:43	6 SHUT DOWN	13:05:36

Customer: OXY  
Well Description: CC 697-09-09  
Company Rep: HENRY

Job Date: 08-Mar-2011  
Job Type: TOP OUT  
Cement Supervisor: JOHN FEUERBORN

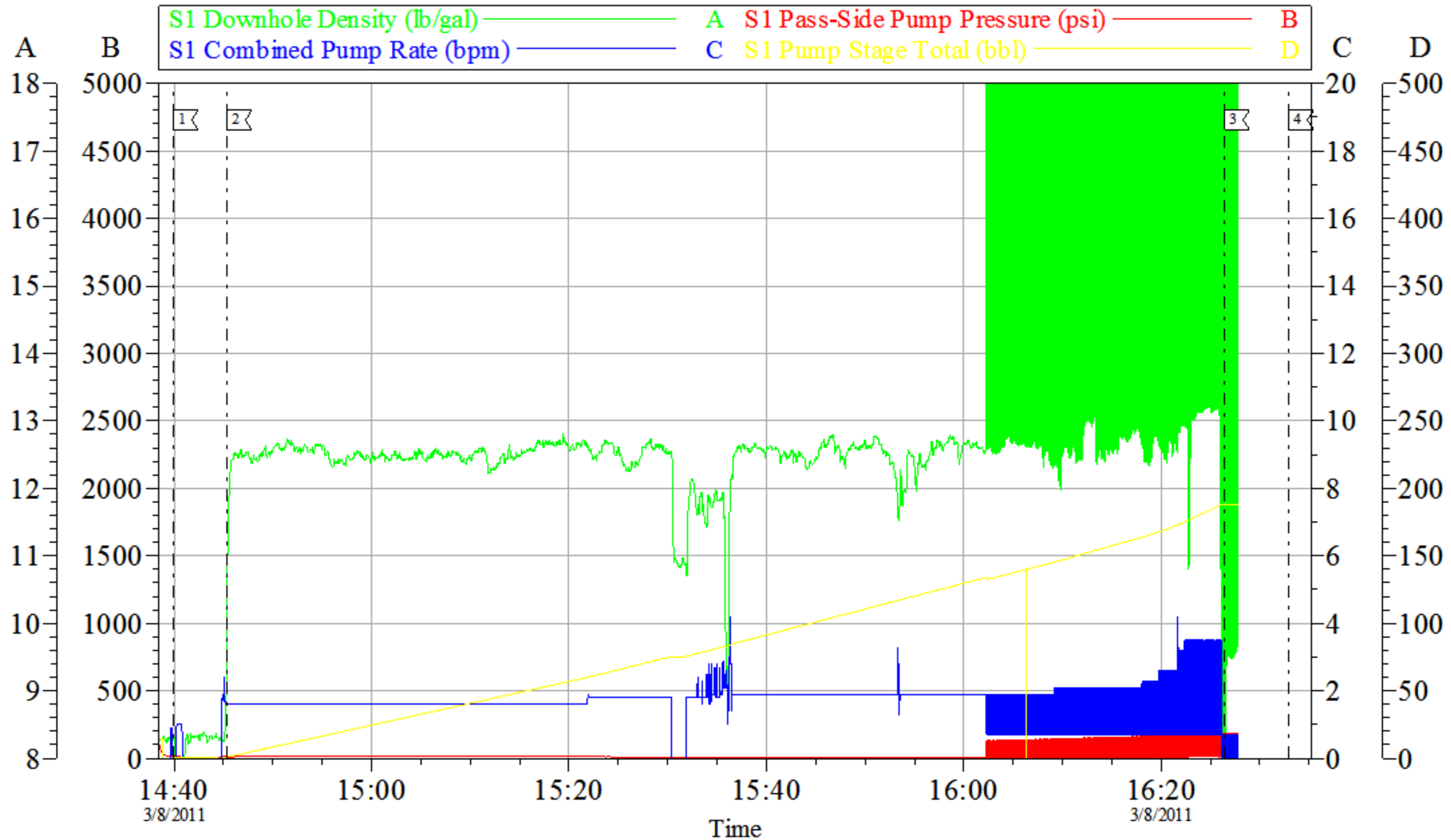
Sales Order #: 7840284  
ADC Used: NO  
Elite #:2 PAUL SALAZAR

OptiCem v6.4.0  
08-Mar-11 13:16



# OXY

## 2ND TOP OUT



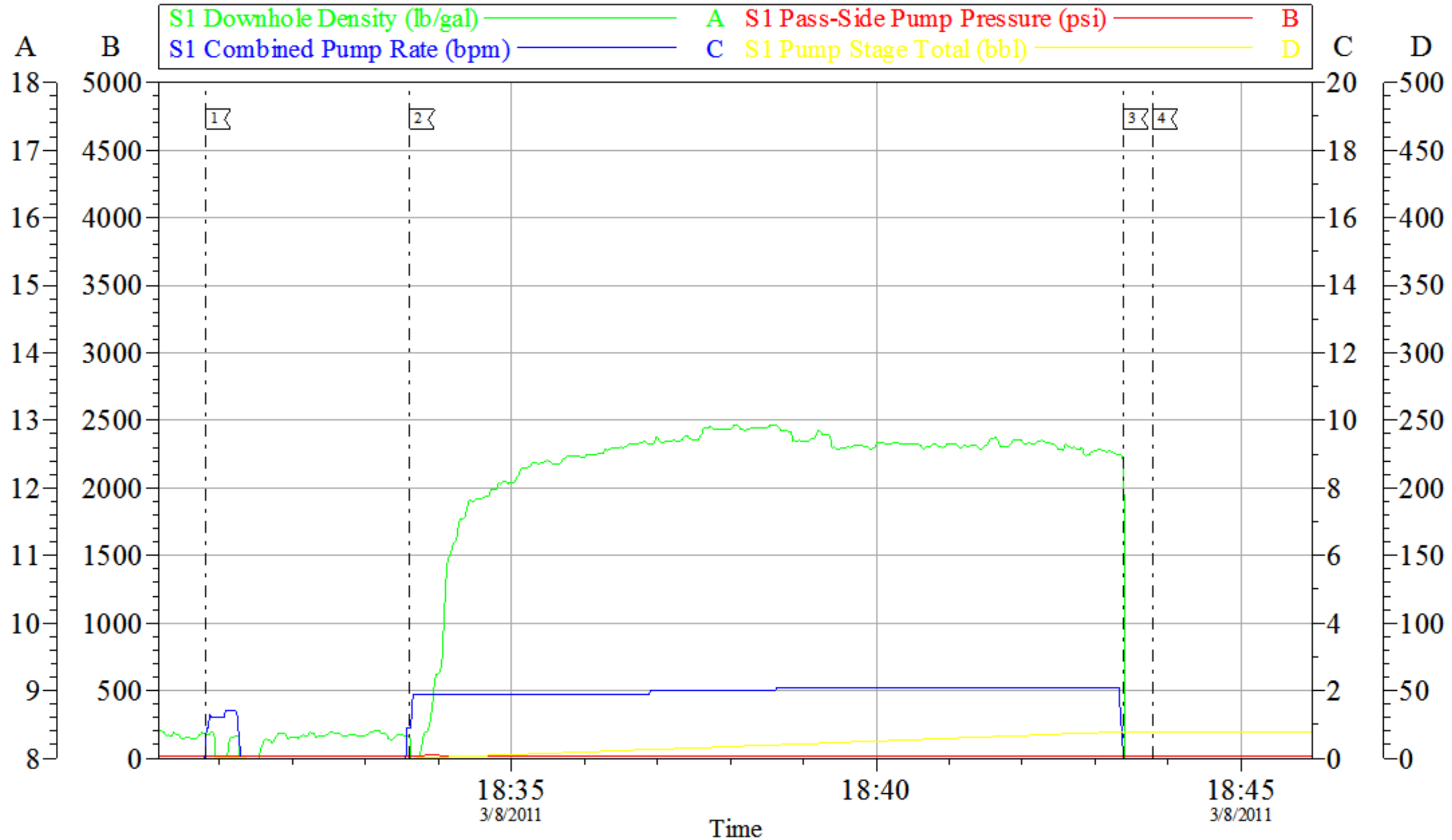
Local Event Log		
1	CHECK LINES	14:39:52
2	PUMP TOP OUT	14:45:19
3	SHUT DOWN	16:26:25
4	GET READY FOR 3RD TOP OUT	16:32:55

Customer: OXY	Job Date: 08-Mar-2011	Sales Order #: 7840284
Well Description: CC 697-09-09	Job Type: TOP OUT	ADC Used: NO
Company Rep: HENRY	Cement Supervisor: JOHN FEUERBORN	Elite #2: P SALAZAR

OptiCem v6.4.0  
08-Mar-11 16:32

# OXY

## 3RD TOP OUT



Local Event Log			
1	CHECK LINES	18:30:49	2
			PUMP TOP OUT 18:33:36
3	SHUT DOWN	18:43:23	4
			END JOB CEMENT TO SURFACE 18:43:47

Customer: OXY	Job Date: 08-Mar-2011	Sales Order #: 7840284
Well Description: CC 697-09-09	Job Type: TOP OUT	ADC Used: NO
Company Rep: HENRY	Cement Supervisor: JOHN FEURBORN	Elite #2: P SALAZAR