
CHEVRON - MID-CONTINENT EBIZ

**SKR 598-36-AV-22
SKINNER RIDGE
Garfield County , Colorado**

Cement Production Casing
18-Oct-2008

Job Site Documents

The Road to Excellence Starts with Safety

Sold To #: 338668	Ship To #: 2666612	Quote #:	Sales Order #: 6248444
Customer: CHEVRON - MID-CONTINENT EBIZ		Customer Rep: MEIER, DAN	
Well Name: SKR		Well #: 598-36-AV-22	API/UWI #: 05-045-16280
Field: SKINNER RIDGE	City (SAP): PARACHUTE	County/Parish: Garfield	State: Colorado
Lat: N 39.573 deg. OR N 39 deg. 34 min. 21.68 secs.		Long: W 108.34 deg. OR W -109 deg. 39 min. 36.083 secs.	
Contractor: H&P 318		Rig/Platform Name/Num: H&P 318	
Job Purpose: Cement Production Casing			
Well Type: Development Well		Job Type: Cement Production Casing	
Sales Person: HARTLEY, RICHARD		Srv Supervisor: KENDALL, JOHN	MBU ID Emp #: 371361

Job Personnel

HES Emp Name	Exp Hrs	Emp #	HES Emp Name	Exp Hrs	Emp #	HES Emp Name	Exp Hrs	Emp #
GAMBLE, BENJAMIN T		446666	HESS, LIGHTNEN Rich		410888	HOEY, ROBERT Ross		399757
KENDALL, JOHN Clifford		371361	STEMPKY, MICHAEL J		392967			

Equipment

HES Unit #	Distance-1 way	HES Unit #	Distance-1 way	HES Unit #	Distance-1 way	HES Unit #	Distance-1 way
10025041	120 mile	10086132C	120 mile	10551730C	120 mile	10951244	120 mile
10995025	120 mile	6334	120 mile				

Job Hours

Date	On Location Hours	Operating Hours	Date	On Location Hours	Operating Hours	Date	On Location Hours	Operating Hours
10/16/08	1	0	10/17/08	8				

TOTAL Total is the sum of each column separately

Job

Formation Name	Job	Job Times	Date	Time	Time Zone
Formation Depth (MD)	Top Bottom	Called Out	17 - Oct - 2008	17:00	MST
Form Type	BHST	On Location	17 - Oct - 2008	21:00	MST
Job depth MD	6449. ft	Job Started	18 - Oct - 2008	05:30	MST
Water Depth	Wk Ht Above Floor	Job Completed	18 - Oct - 2008	07:24	MST
Perforation Depth (MD)	From To	Departed Loc	18 - Oct - 2008	00:00	MST

Well Data

Description	New / Used	Max pressure psig	Size in	ID in	Weight lbm/ft	Thread	Grade	Top MD ft	Bottom MD ft	Top TVD ft	Bottom TVD ft
-------------	------------	-------------------	---------	-------	---------------	--------	-------	-----------	--------------	------------	---------------

Sales/Rental/3rd Party (HES)

Description	Qty	Qty uom	Depth	Supplier
PLUG, CMTG, TOP, 4 1/2, HWE, 3.65 MIN/4.14 MA	1	EA		
PORT. DAS W/CEMWIN; ACQUIRE W/HES, ZI	1	JOB		
ADC (AUTO DENSITY CTRL) SYS, /JOB, ZI	1	JOB		

Tools and Accessories

Type	Size	Qty	Make	Depth	Type	Size	Qty	Make	Depth	Type	Size	Qty	Make
Guide Shoe					Packer					Top Plug	4.5	1	
Float Shoe					Bridge Plug					Bottom Plug			
Float Collar					Retainer					SSR plug set			
Insert Float										Plug Container	4.5	1	
Stage Tool										Centralizers			

Miscellaneous Materials

Gelling Agt	Conc	Surfactant	Conc	Acid Type	Qty	Conc %
Treatment Fld	Conc	Inhibitor	Conc	Sand Type	Size	Qty

HALLIBURTON**Cementing Job Summary**

Fluid Data									
Stage/Plug #: 1									
Fluid #	Stage Type	Fluid Name	Qty	Qty uom	Mixing Density lbm/gal	Yield ft ³ /sk	Mix Fluid Gal/sk	Rate bbl/min	Total Mix Fluid Gal/sk
1	Dyed PolyFlake Spacer		50.0	bbl	8.33	.0	.0	.0	
2	Lead Cement	EXTENDACEM (TM) SYSTEM (452981)	440.0	sacks	12.8	1.55	7.15		7.67
	7.674 Gal	FRESH WATER							
3	Tail Cement	EXTENDACEM (TM) SYSTEM (452981)	648.0	sacks	13.2	1.43	6.19		7.0
4	KCL Displacement		99.2	bbl	.	.0	.0	.0	
Calculated Values		Pressures		Volumes					
Displacement	99.2	Shut In: Instant		Lost Returns	0	Cement Slurry	286	Pad	
Top Of Cement		5 Min		Cement Returns	0	Actual Displacement	99	Treatment	
Frac Gradient		15 Min		Spacers	50	Load and Breakdown		Total Job	
Rates									
Circulating	RIG	Mixing	6	Displacement	10	Avg. Job	8		
Cement Left In Pipe	Amount	46 ft	Reason	Shoe Joint					
Frac Ring # 1 @	ID	Frac ring # 2 @	ID	Frac Ring # 3 @	ID	Frac Ring # 4 @	ID		
The Information Stated Herein Is Correct				Customer Representative Signature					

The Road to Excellence Starts with Safety

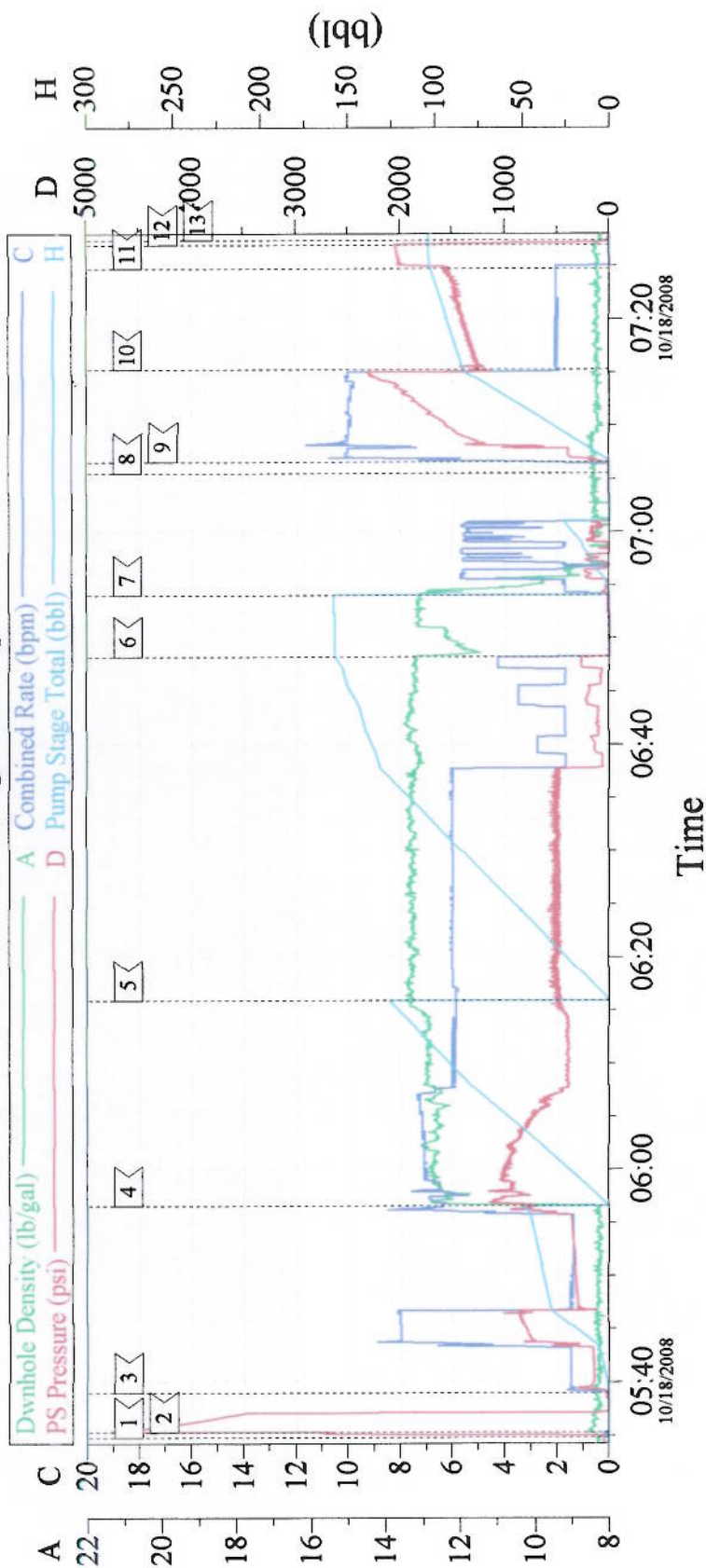
Sold To #: 338668	Ship To #: 2666612	Quote #:	Sales Order #: 6248444
Customer: CHEVRON - MID-CONTINENT EBIZ		Customer Rep: MEIER, DAN	
Well Name: SKR	Well #: 598-36-AV-22	API/UWI #: 05-045-16280	
Field: SKINNER RIDGE	City (SAP): PARACHUTE	County/Parish: Garfield	State: Colorado
Legal Description:			
Lat: N 39.573 deg. OR N 39 deg. 34 min. 21.68 secs.		Long: W 108.34 deg. OR W -109 deg. 39 min. 36.083 secs.	
Contractor: H&P 318		Rig/Platform Name/Num: H&P 318	
Job Purpose: Cement Production Casing		Ticket Amount:	
Well Type: Development Well		Job Type: Cement Production Casing	
Sales Person: HARTLEY, RICHARD		Srv Supervisor: KENDALL, JOHN	
		MBU ID Emp #: 371361	

Activity Description	Date/Time	Cht #	Rate bbl/ min	Volume bbl		Pressure psig		Comments
				Stage	Total	Tubing	Casing	
Call Out	10/17/2008 17:00							
Arrive At Loc	10/17/2008 21:00							RUNNING CASING
Pre-Rig Up Safety Meeting	10/17/2008 23:00							
Rig-Up Completed	10/18/2008 00:01							
Pre-Job Safety Meeting	10/18/2008 05:00							6475 TD 6449 TP 46 SJ OH 7 7/8" CASING 4.5 MUD# 10.1
Start Job	10/18/2008 05:34							
Test Lines	10/18/2008 05:35						4200. 0	
Pump Spacer	10/18/2008 05:39		7	50			731.0	WATER SPACER/ LAST 20 W/ POLYFLAKE
Pump Lead Cement	10/18/2008 05:56		6	121.5			495.0	440SKS 12.8 # 1.55 YIELD 7.15 WATER
Pump Tail Cement	10/18/2008 06:15		6	185 <i>1162.6</i>			532.0	648 SKS 13.2 # 1.43 YIELD 6.19 WATER
Shutdown	10/18/2008 06:48							<i>6385XS</i>
Clean Lines	10/18/2008 06:54							
Drop Plug	10/18/2008 07:05							
Pump Displacement	10/18/2008 07:06		10	99.5			2281. 0	K.C.L. WATER
Slow Rate	10/18/2008 07:15		2	85			1562. 0	
Bump Plug	10/18/2008 07:24		2				2033. 0	
Check Floats	10/18/2008 07:26							FLOATS HELD

Cementing Job Log

Activity Description	Date/Time	Cht #	Rate bbl/min	Volume bbl		Pressure psig		Comments
				Stage	Total	Tubing	Casing	
End Job	10/18/2008 07:27					10 bbls wte. space		NO PIPE MOVEMENT NO CEMENT TO SURFACE
Comment	10/18/2008 07:30						back - JCF	THANKYOU FOR USING HALLIBURTON OF GRAND JUNCTION CO
Comment	10/18/2008 07:30							

4 1/2" Longstring



Event Log

1	START JOB	05:34:50	2	TEST LINES	05:35:19	3	WATER SPACER	05:39:01
4	LEAD CEMENT	05:56:35	5	TAIL CEMENT	06:15:55	6	SHUT DOWN	06:48:16
7	CLEAN LINES	06:54:01	8	DROP PLUG	07:05:32	9	PUMP DISPLACEMENT	07:06:33
10	SLOW RATE	07:15:17	11	BUMP PLUG	07:24:43	12	CHECK FLOATS	07:26:56
13	END JOB	07:27:23						

Customer: CHEVRON	Job Date: 10/17/08	Ticket #: 6248444
Well Number: SKR 598-36-AV-22	Job Type: 4.5 PRODUCTION	ADC Used: Yes
Supervisor: JOHN KENDALL	Operator: ROBERT HOEY	PUMP # ELITE02