

HALLIBURTON

**CHEVRON - MID-CONTINENT EBIZ
11111 S WILCREST DR - DO NOT MAIL
HOUSTON, Texas**

SKR
SKR 598-36-AV-22

H&P 318/H&P/318

Post Job Summary

Cement Surface Casing

Prepared for:
Date Prepared:
Version: 1

Service Supervisor: CRONKHITE, KENT

Submitted by:

HALLIBURTON

The Road to Excellence Starts with Safety

Sold To #: 338668	Ship To #: 2666612	Quote #:	Sales Order #: 6194268
Customer: CHEVRON - MID-CONTINENT EBIZ		Customer Rep: TATUM, ELMER	
Well Name: SKR	Well #: 598-36-AV-22	API/UWI #:	
Field: PICEANCE	City (SAP): PARACHUTE	County/Parish: Garfield	State: Colorado
Contractor: H&P 318	Rig/Platform Name/Num: H&P 318		
Job Purpose: Cement Surface Casing			
Well Type: Development Well		Job Type: Cement Surface Casing	
Sales Person: METLI, MARSHALL		Srvc Supervisor: CRONKHITE, KENT	MBU ID Emp #: 336769

Job Personnel

HES Emp Name	Exp Hrs	Emp #	HES Emp Name	Exp Hrs	Emp #	HES Emp Name	Exp Hrs	Emp #
CRONKHITE, KENT Alan	4.5	336769	GAMBLE, BENJAMIN T	4.5	446666	MAIN, CHAD R	4.5	335770
WHITE, EDWARD W	4.5	424173						

Equipment

HES Unit #	Distance-1 way	HES Unit #	Distance-1 way	HES Unit #	Distance-1 way	HES Unit #	Distance-1 way
10719777	120 mile	10744648C	120 mile	10998508	120 mile		

Job Hours

Date	On Location Hours	Operating Hours	Date	On Location Hours	Operating Hours	Date	On Location Hours	Operating Hours
9/27/08	4.5	4.5						
TOTAL								

Total is the sum of each column separately

Job

Formation Name	Formation Depth (MD)	Top	Bottom	Job depth MD	Job Depth TVD	Water Depth	Perforation Depth (MD)	From	To
		0	1060	1060. ft	1047. ft				
Form Type		BHST							
Job depth MD									
Water Depth									
Perforation Depth (MD)									

Job Times

Date	Time	Time Zone
27 - Sep - 2008	14:30	MST
27 - Sep - 2008	18:30	MST
27 - Sep - 2008	20:48	MST
27 - Sep - 2008	21:45	MST
27 - Sep - 2008	23:00	MST

Well Data

Description	New / Used	Max pressure psig	Size in	ID in	Weight lbm/ft	Thread	Grade	Top MD ft	Bottom MD ft	Top TVD ft	Bottom TVD ft
-------------	------------	-------------------	---------	-------	---------------	--------	-------	-----------	--------------	------------	---------------

Sales/Rental/3rd Party (HES)

Description	Qty	Qty uom	Depth	Supplier
PLUG,CMTG,TOP,8 5/8,HWE,7.20 MIN/8.09 MA	1	EA		

Tools and Accessories

Type	Size	Qty	Make	Depth	Type	Size	Qty	Make	Depth	Type	Size	Qty	Make
Guide Shoe					Packer					Top Plug	8.625	1	
Float Shoe					Bridge Plug					Bottom Plug			
Float Collar					Retainer					SSR plug set			
Insert Float										Plug Container	8.625	1	
Stage Tool										Centralizers			

Miscellaneous Materials

Gelling Agt	Conc	Surfactant	Conc	Acid Type	Qty	Conc	%
Treatment Fld	Conc	Inhibitor	Conc	Sand Type	Size		Qty

Fluid Data

Fluid #	Stage Type	Fluid Name	Qty	Qty uom	Mixing Density lbm/gal	Yield ft ³ /sk	Mix Fluid Gal/sk	Rate bbl/min	Total Mix Fluid Gal/sk
---------	------------	------------	-----	---------	------------------------	---------------------------	------------------	--------------	------------------------

Stage/Plug #: 1									
Fluid #	Stage Type	Fluid Name	Qty	Qty uom	Mixing Density lbm/gal	Yield ft ³ /sk	Mix Fluid Gal/sk	Rate bbl/min	Total Mix Fluid Gal/sk
1	DYE POLY FLAKE SPACER		50	bbl	.	.0	.0	6	
2	Lead Cement	VERSACEM (TM) SYSTEM (452010)	195.0	sacks	12.3	2.38	13.75	6	
	0.432 Gal	FRESH WATER							
3	Tail Cement	VERSACEM (TM) SYSTEM (452010)	164.0	sacks	12.8	2.11	11.75	6	11.75
	0.347 Gal	FRESH WATER							
Calculated Values		Pressures		Volumes					
Displacement	63.6	Shut In: Instant		Lost Returns		Cement Slurry	144.2	Pad	
Top Of Cement	surface	5 Min		Cement Returns	50	Actual Displacement	63	Treatment	
Frac Gradient		15 Min		Spacers	50	Load and Breakdown		Total Job	257.2
Rates									
Circulating	rig	Mixing	6	Displacement	10	Avg. Job	6		
Cement Left In Pipe	Amount	46.85 ft	Reason	Shoe Joint					
Frac Ring # 1 @	ID	Frac ring # 2 @	ID	Frac Ring # 3 @	ID	Frac Ring # 4 @	ID		
The Information Stated Herein Is Correct				Customer Representative Signature					

Cementing Job Log

The Road to Excellence Starts with Safety

Sold To #: 338668	Ship To #: 2666612	Quote #:	Sales Order #: 6194268
Customer: CHEVRON - MID-CONTINENT EBIZ	Customer Rep: TATUM, ELMER		
Well Name: SKR	Well #: 598-36-AV-22	API/UWI #:	
Field: PICEANCE	City (SAP): PARACHUTE	County/Parish: Garfield	State: Colorado
Legal Description:			
Lat:		Long:	
Contractor: H&P 318	Rig/Platform Name/Num: H&P 318		
Job Purpose: Cement Surface Casing	Ticket Amount:		
Well Type: Development Well	Job Type: Cement Surface Casing		
Sales Person: METLI, MARSHALL	Srvc Supervisor: CRONKHITE, KENT	MBU ID Emp #: 336769	

Activity Description	Date/Time	Cht #	Rate bbl/min	Volume bbl		Pressure psig		Comments
				Stage	Total	Tubing	Casing	
Call Out	09/27/2008 14:30							
Depart Yard Safety Meeting	09/27/2008 16:45							
Crew Leave Yard	09/27/2008 17:00							
Arrive At Loc	09/27/2008 18:30							
Assessment Of Location Safety Meeting	09/27/2008 18:35							TD 1060' CSG 1047' SHOE 46.85' MUD WT 9.0 PPG
Pre-Rig Up Safety Meeting	09/27/2008 18:40							
Rig-Up Equipment	09/27/2008 19:00							
Pre-Job Safety Meeting	09/27/2008 20:38							
Rig-Up Completed	09/27/2008 20:48							
Start Job	09/27/2008 20:48							
Test Lines	09/27/2008 20:49					3800.0		
Pump Spacer	09/27/2008 20:50		6	50	50		215.0	30 bbls H2O 20 bbls with 10 ILBS PLOY-E-FLAKE and Dye
Pump Lead Cement	09/27/2008 21:04		6	82.6	82.6		300.0	195 sks at 12.3 ppg 2.38 ft3/sk 13.75 gal/sk
Pump Tail Cement	09/27/2008 21:17		6	61.6	61.6		300.0	164 sks at 12.8 ppg 2.11 ft3/sk 11.75 gal/sk
Shutdown	09/27/2008 21:26							
Drop Top Plug	09/27/2008 21:27							
Pump Displacement	09/27/2008 21:28		10	63.6			635.0	Displace with H2O

Sold To #: 338668

Ship To #: 2666612

Quote #:

Sales Order #:

6194268

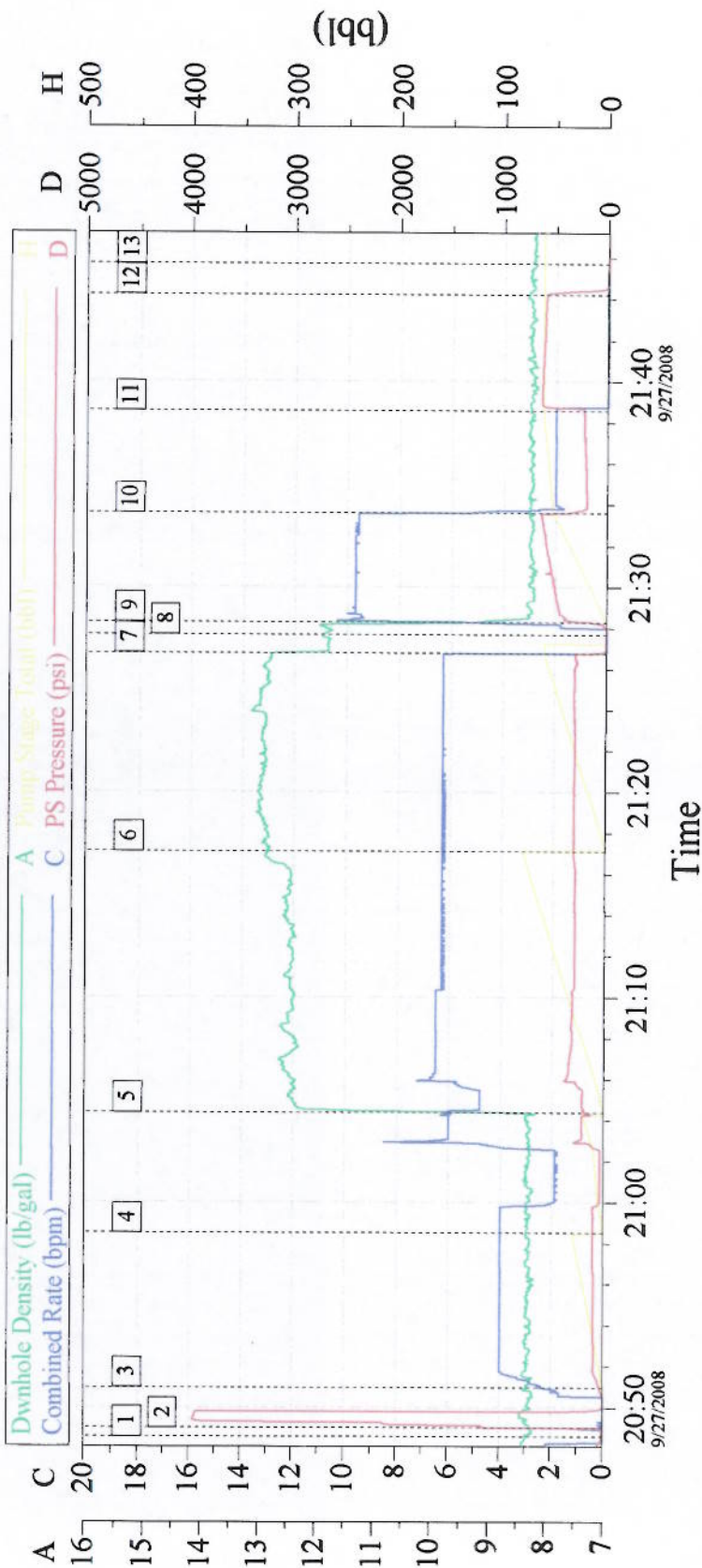
SUMMIT Version: 7.20.130

Saturday, September 27, 2008 10:32:00

Cementing Job Log

Activity Description	Date/Time	Cht #	Rate bbl/min	Volume bbl		Pressure psig		Comments
				Stage	Total	Tubing	Casing	
Slow Rate	09/27/2008 21:33		2	53	53		205.0	
Bump Plug	09/27/2008 21:38		2	63.6	63		650.0	
Check Floats	09/27/2008 21:44							CHECKED FLOATS FLOATS HELD
End Job	09/27/2008 21:45							good circulation through out job 50 bbls of cement to surface
Pre-Rig Down Safety Meeting	09/27/2008 21:45							
Rig-Down Equipment	09/27/2008 21:50							

8 5/8 SURFACE



Event Log

Intersection	PP	Intersection	PP	Intersection	PP
1 start job	20:48:36 15.00	2 test lines	20:49:01 1164	3 pump spacer 1	20:50:59 43.17
4 pump spacer 2	20:58:30 108.0	5 pump lead cement	21:04:22 186.7	6 pump tail cement	21:17:06 307.2
7 shut down	21:26:47 82.70	8 drop top plug	21:27:42 6.000	9 pump displacement	21:28:18 239.9
10 slow rate	21:33:36 377.7	11 bump plug	21:38:34 233.0	12 check floats/floats held	21:44:13 594.2
13 end job	21:45:43 5.000				

Customer: Chevron
Well Desc: SKR 598-36-AV-22
Cementer: Kent Cronkhite

Job Date: 09/27/08
Job Type: 7521
ADC Used: Yes

Ticket #: 6194268
Company Rep: Elmer Tatum

CemWin v1.7.2
27-Sep-08 22:23