
CHEVRON - MID-CONTINENT EBIZ

**SKR 598-36-AV-18
SKINNER RIDGE
Garfield County , Colorado**

Cement Surface Casing
25-Sep-2008

Job Site Documents

The Road to Excellence Starts with Safety

Sold To #: 338668	Ship To #: 2666608	Quote #:	Sales Order #: 6196531
Customer: CHEVRON - MID-CONTINENT EBIZ	Customer Rep: MORGAN, RANDY		
Well Name: SKR	Well #: 598-36-AV-18	API/UWI #: 05-045-16276	
Field: SKINNER RIDGE	City (SAP): PARACHUTE	County/Parish: Garfield	State: Colorado
Lat: N 39.573 deg. OR N 39 deg. 34 min. 21.623 secs.	Long: W 108.34 deg. OR W -109 deg. 39 min. 35.906 secs.		
Contractor: H&P 318	Rig/Platform Name/Num: H&P 318		
Job Purpose: Cement Surface Casing			
Well Type: Development Well	Job Type: Cement Surface Casing		
Sales Person: HARTLEY, RICHARD	Srvc Supervisor: NELSON, RYAN	MBU ID Emp #: 386514	

Job Personnel

HES Emp Name	Exp Hrs	Emp #	HES Emp Name	Exp Hrs	Emp #	HES Emp Name	Exp Hrs	Emp #
HANSEN, TED	6	396847	LEDON, GUILLERMO S	6	407910	NELSON, RYAN Cody	6	386514
PHILLIPS, MARK Bejar	6	445272						

Equipment

HES Unit #	Distance-1 way	HES Unit #	Distance-1 way	HES Unit #	Distance-1 way	HES Unit #	Distance-1 way
10719774	120	10857016	120	10872113	120		

Job Hours

Date	On Location Hours	Operating Hours	Date	On Location Hours	Operating Hours	Date	On Location Hours	Operating Hours
9-25-08	6	3						

TOTAL Total is the sum of each column separately

Job

Formation Name	Formation Depth (MD)	Top	Bottom	Job Times	Date	Time	Time Zone
Form Type			BHST	Called Out	25 - Sep - 2008	03:00	MST
Job depth MD	1361. ft		Job Depth TVD	On Location	25 - Sep - 2008	09:00	MST
Water Depth			Wk Ht Above Floor	Job Started	25 - Sep - 2008	12:15	MST
Perforation Depth (MD)	From	To	4. ft	Job Completed	25 - Sep - 2008	13:25	MST
				Departed Loc	25 - Sep - 2008	15:00	MST

Well Data

Description	New / Used	Max pressure psig	Size in	ID in	Weight lbm/ft	Thread	Grade	Top MD ft	Bottom MD ft	Top TVD ft	Bottom TVD ft
OPEN HOLE				12.25					1361.		
SURFACE CASING	Unknown		8.625	8.097	24.		J-55		1341.		

Sales/Rental/3rd Party (HES)

Description	Qty	Qty uom	Depth	Supplier
PLUG,CMTG,TOP,8 5/8,HWE,7.20 MIN/8.09 MA	1	EA		

Tools and Accessories

Type	Size	Qty	Make	Depth	Type	Size	Qty	Make	Depth	Type	Size	Qty	Make
Guide Shoe					Packer					Top Plug	8 5/8	1	HES
Float Shoe					Bridge Plug					Bottom Plug			
Float Collar					Retainer					SSR plug set			
Insert Float										Plug Container	8 5/8	1	HES
Stage Tool										Centralizers			

Miscellaneous Materials

Gelling Agt	Conc	Surfactant	Conc	Acid Type	Qty	Conc	%
Treatment Fld	Conc	Inhibitor	Conc	Sand Type	Size	Qty	

HALLIBURTON**Cementing Job Summary**

Fluid Data									
Stage/Plug #: 1									
Fluid #	Stage Type	Fluid Name	Qty	Qty uom	Mixing Density lbm/gal	Yield ft ³ /sk	Mix Fluid Gal/sk	Rate bbl/min	Total Mix Fluid Gal/sk
1	Dyed Spacer		50.0	bbl	8.33	.0	.0	6	
2	Lead Cement	VERSACEM (TM) SYSTEM (452010)	235.0	sacks	12.3	2.38	13.75	6	
3	Tail Cement	VERSACEM (TM) SYSTEM (452010)	164.0	sacks	12.8	2.11	11.75	6	
4	Fresh Water Spacer		82.2	bbl	8.33	.0	.0	7	
Calculated Values		Pressures		Volumes					
Displacement	82.2	Shut In: Instant		Lost Returns	No	Cement Slurry	161.2	Pad	
Top Of Cement	Surface	5 Min		Cement Returns	50BBL	Actual Displacement	82.2	Treatment	
Frac Gradient		15 Min		Spacers		Load and Breakdown		Total Job	
Rates									
Circulating		Mixing		6	Displacement		7	Avg. Job	6
Cement Left In Pipe	Amount	49 ft	Reason	Shoe Joint					
Frac Ring # 1 @	ID	Frac ring # 2 @	ID	Frac Ring # 3 @	ID	Frac Ring # 4 @	ID		
The Information Stated Herein Is Correct				Customer Representative Signature					

The Road to Excellence Starts with Safety

The Road to Excellence Starts with Safety

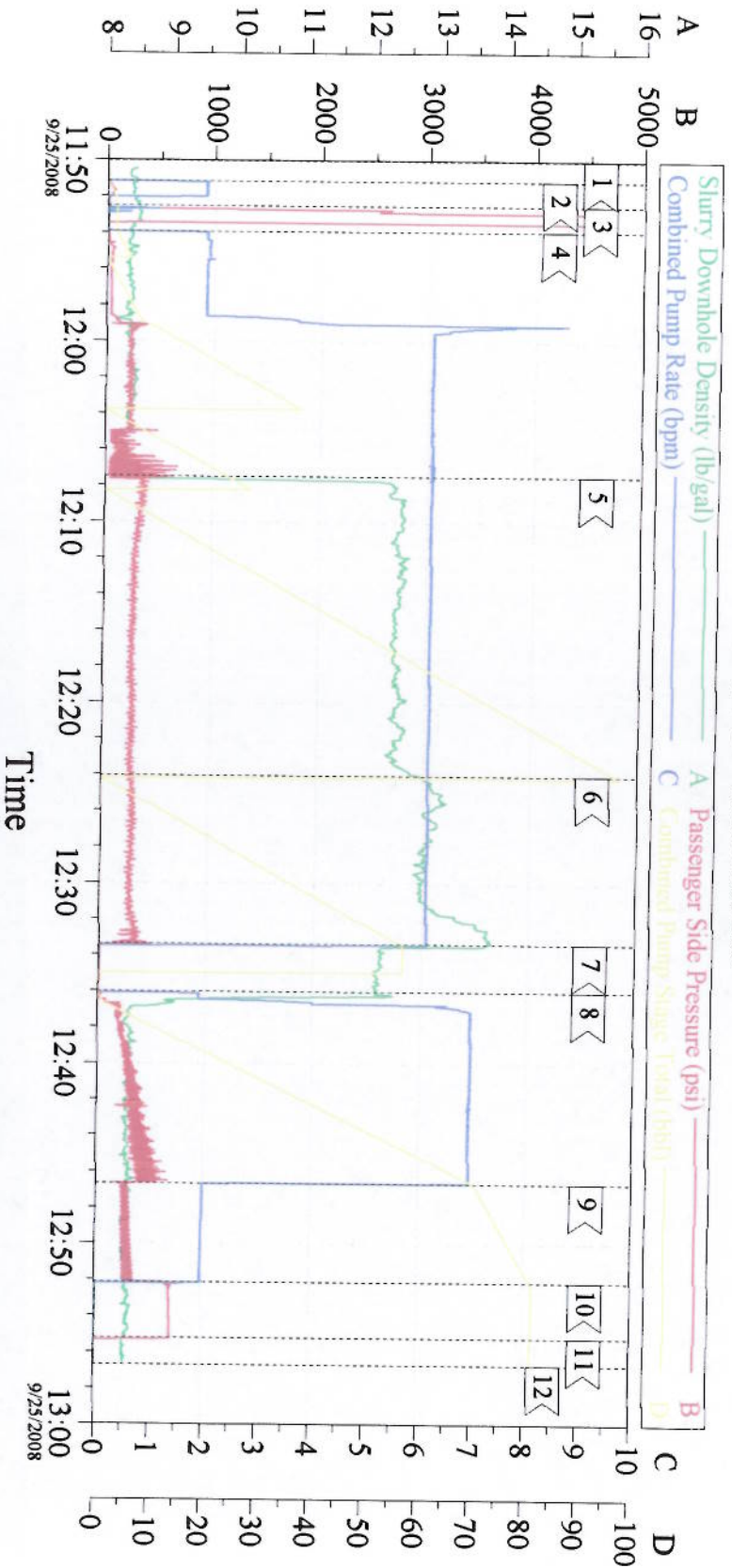
Sold To #: 338668	Ship To #: 2666608	Quote #:	Sales Order #: 6196531
Customer: CHEVRON - MID-CONTINENT EBIZ		Customer Rep: MORGAN, RANDY	
Well Name: SKR	Well #: 598-36-AV-18	API/UWI #: 05-045-16276	
Field: SKINNER RIDGE	City (SAP): PARACHUTE	County/Parish: Garfield	State: Colorado
Legal Description:			
Lat: N 39.573 deg. OR N 39 deg. 34 min. 21.623 secs.		Long: W 108.34 deg. OR W -109 deg. 39 min. 35.906 secs.	
Contractor: H&P 318		Rig/Platform Name/Num: H&P 318	
Job Purpose: Cement Surface Casing			Ticket Amount:
Well Type: Development Well		Job Type: Cement Surface Casing	
Sales Person: HARTLEY, RICHARD		Srv Supervisor: NELSON, RYAN	MBU ID Emp #: 386514

Activity Description	Date/Time	Cht #	Rate bbl/min	Volume bbl		Pressure psig		Comments
				Stage	Total	Tubing	Casing	
Call Out	09/25/2008 03:00							
Arrive at Location from Other Job or Site	09/25/2008 09:00							
Assessment Of Location Safety Meeting	09/25/2008 09:05							
Pre-Rig Up Safety Meeting	09/25/2008 09:10							
Rig-Up Equipment	09/25/2008 09:15							
Pre-Job Safety Meeting	09/25/2008 11:45							
Start Job	09/25/2008 12:12							TD- 1360' TP-1341' SJ-49' CASING 8 5/8" 24# J-55 HOLE 12 1/4" MUD 9.2
Other	09/25/2008 12:17			2				Fill lines
Test Lines	09/25/2008 12:18						4490.0	
Pump Spacer 1	09/25/2008 12:20		6	50			232.0	Fresh water with Poly-Flake and Green Dye
Pump Lead Cement	09/25/2008 12:33		6	99.6			260.0	235 Sks 12.3 ppg 2.38 yield 13.75 gal/sk
Pump Tail Cement	09/25/2008 12:50		6	61.6			275.0	164 Sks 12.8 ppg 2.11 yield 11.75 gal/sk
Shutdown	09/25/2008 12:59							
Drop Top Plug	09/25/2008 13:00							
Pump Displacement	09/25/2008 13:02		7	82.2			431.0	Fresh Water
Cement Returns to Surface	09/25/2008 13:07							Well circulated 50 bbls of cement to surface
Slow Rate	09/25/2008 13:12		2	70			250.0	

Cementing Job Log

Activity Description	Date/Time	Cht #	Rate bbl/ min	Volume bbl		Pressure psig		Comments
				Stage	Total	Tubing	Casing	
Bump Plug	09/25/2008 13:18		2	82.2			680.0	
Check Floats	09/25/2008 13:23							
End Job	09/25/2008 13:25							Floats held. Well was circulated prior to the job. Good returns throughout the job. Pipe was static throughout the job

8 5/8' Surface



Event Log

1 Start Job	11:50:02	2 Fill Lines	11:51:09	3 Pressure Test	11:52:31
4 Pump Spacer	11:53:57	5 Pump Lead Cement	12:07:30	6 Pump Tail Cement	12:24:04
7 Shut Down/Drop Plug	12:33:23	8 Pump Displacement	12:36:03	9 Slow Rate	12:46:40
10 Bump Plug	12:52:08	11 Check Floats	12:55:13	12 End Job	12:56:43

Customer: Chevron
 Job Type: Surface
 Supervisor: Ryan Nelson

Job Date: 09/25/08
 Well Number: 598-36-AV-18
 Operator/Truck: Mark Phillips/Elite 10

Ticket #: 6196531
 ADC Used? Yes

TG Version G3.4.1
 25-Sep-08 13:41