
CHEVRON - MID-CONTINENT EBIZ

**SKR 598-36-AV-18
SKINNER RIDGE
Garfield County , Colorado**

Cement Production Casing **25-Oct-2008**

Job Site Documents

The Road to Excellence Starts with Safety

Sold To #: 338668	Ship To #: 2666608	Quote #:	Sales Order #: 6254410
Customer: CHEVRON - MID-CONTINENT EBIZ	Customer Rep: RANDY MORGAN		
Well Name: SKR	Well #: 598-36-AV-18	API/UWI #: 05-045-16276	
Field: SKINNER RIDGE	City (SAP): PARACHUTE	County/Parish: Garfield	State: Colorado
Lat: N 39.573 deg. OR N 39 deg. 34 min. 21.623 secs.	Long: W 108.34 deg. OR W -109 deg. 39 min. 35.906 secs.		
Contractor: H&P 318	Rig/Platform Name/Num: H&P 318		
Job Purpose: Cement Production Casing			
Well Type: Development Well	Job Type: Cement Production Casing		
Sales Person: HARTLEY, RICHARD	Srvc Supervisor: HAYES, DIRK	MBU ID Emp #: 336768	

Job Personnel

HES Emp Name	Exp Hrs	Emp #	HES Emp Name	Exp Hrs	Emp #	HES Emp Name	Exp Hrs	Emp #
HAYES, DIRK A	5	336768	JOHNSTON, JAMES Arthur	5	433881	STILLSON, ERIC W	5	393789
WILSON, WILLIAM Harold	5	421258						

Equipment

HES Unit #	Distance-1 way	HES Unit #	Distance-1 way	HES Unit #	Distance-1 way	HES Unit #	Distance-1 way
10616651C	120 mile	10719775	120 mile	10867094	120 mile	10897925	120 mile
10973565	120 mile	6334	120 mile				

Job Hours

Date	On Location Hours	Operating Hours	Date	On Location Hours	Operating Hours	Date	On Location Hours	Operating Hours
10-25-08	5	1.5						

TOTAL

Total is the sum of each column separately

Job

Formation Name	Formation Depth (MD)	Top	Bottom	Form Type	Job depth MD	Water Depth	Perforation Depth (MD)	From	To
				BHST	5187. ft				
					Job Depth TVD	Wk Ht Above Floor			
					5187. ft	4. ft			

Job Times

Date	Time	Time Zone
24 - Oct - 2008	17:30	MST
24 - Oct - 2008	11:00	MST
25 - Oct - 2008	03:37	MST
25 - Oct - 2008	04:52	MST
25 - Oct - 2008	06:45	MST

Well Data

Description	New / Used	Max pressure psig	Size in	ID in	Weight lbm/ft	Thread	Grade	Top MD ft	Bottom MD ft	Top TVD ft	Bottom TVD ft
-------------	------------	-------------------	---------	-------	---------------	--------	-------	-----------	--------------	------------	---------------

Sales/Rental/3rd Party (HES)

Description	Qty	Qty uom	Depth	Supplier
PLUG,CMTG,TOP,4 1/2,HWE,3.65 MIN/4.14 MA	1	EA		

Tools and Accessories

Type	Size	Qty	Make	Depth	Type	Size	Qty	Make	Depth	Type	Size	Qty	Make
Guide Shoe					Packer					Top Plug		1	
Float Shoe					Bridge Plug					Bottom Plug			
Float Collar					Retainer					SSR plug set			
Insert Float										Plug Container		1	
Stage Tool										Centralizers			

Miscellaneous Materials

Gelling Agt	Conc	Surfactant	Conc	Acid Type	Qty	Conc	%
Treatment Fld	Conc	Inhibitor	Conc	Sand Type	Size		Qty

Fluid Data									
Stage/Plug #: 1									
Fluid #	Stage Type	Fluid Name	Qty	Qty uom	Mixing Density lbm/gal	Yield ft ³ /sk	Mix Fluid Gal/sk	Rate bbl/min	Total Mix Fluid Gal/sk
1	Polyflake and Dyed Spacer		50.0	bbl	.	.0	.0	4	
2	Lead Cement	EXTENDACEM (TM) SYSTEM (452981)	408.0	sacks	12.8	1.55	7.15	8	7.67
		7.674 Gal FRESH WATER							
3	Tail Cement	EXTENDACEM (TM) SYSTEM (452981)	635.0	sacks	13.2	1.43	6.19	8	7.0
4	KCL Displacement		79.7	bbl	.	.0	.0	8	
Calculated Values		Pressures		Volumes					
Displacement	79.7	Shut In: Instant		Lost Returns	0	Cement Slurry	206	Pad	
Top Of Cement		5 Min		Cement Returns	0	Actual Displacement	79.7	Treatment	
Frac Gradient		15 Min		Spacers	50	Load and Breakdown		Total Job	
Rates									
Circulating		Mixing	8	Displacement	8	Avg. Job	8		
Cement Left In Pipe	Amount	0 ft	Reason	Shoe Joint					
Frac Ring # 1 @	ID	Frac ring # 2 @	ID	Frac Ring # 3 @	ID	Frac Ring # 4 @	ID		
The Information Stated Herein Is Correct				Customer Representative Signature					

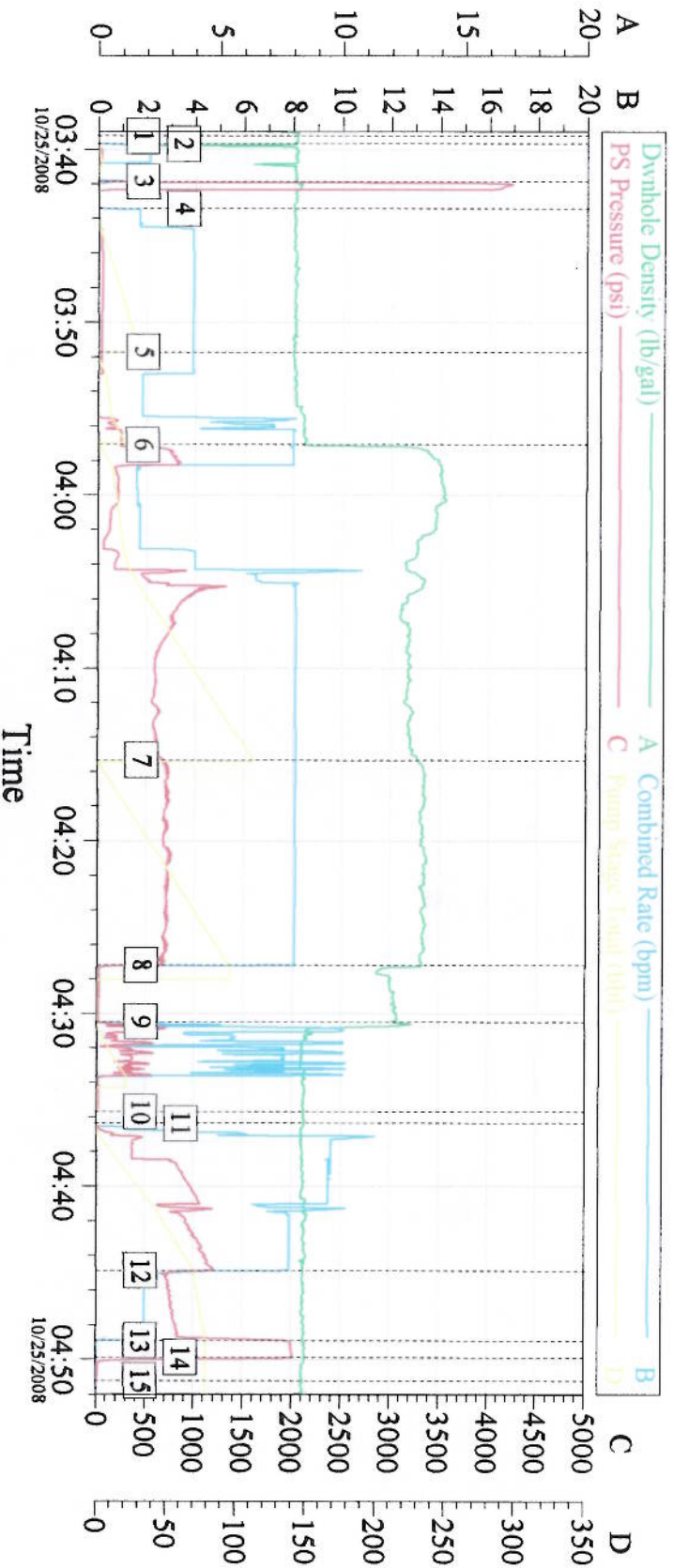
The Road to Excellence Starts with Safety

Sold To #: 338668	Ship To #: 2666608	Quote #:	Sales Order #: 6254410
Customer: CHEVRON - MID-CONTINENT EBIZ	Customer Rep: RANDY MORGAN		
Well Name: SKR	Well #: 598-36-AV-18	API/UWI #: 05-045-16276	
Field: SKINNER RIDGE	City (SAP): PARACHUTE	County/Parish: Garfield	State: Colorado
Legal Description:			
Lat: N 39.573 deg. OR N 39 deg. 34 min. 21.623 secs.		Long: W 108.34 deg. OR W -109 deg. 39 min. 35.906 secs.	
Contractor: H&P 318	Rig/Platform Name/Num: H&P 318		
Job Purpose: Cement Production Casing			Ticket Amount:
Well Type: Development Well	Job Type: Cement Production Casing		
Sales Person: HARTLEY, RICHARD	Srvc Supervisor: HAYES, DIRK	MBU ID Emp #: 336768	

Activity Description	Date/Time	Cht #	Rate bbl/min	Volume bbl		Pressure psig		Comments
				Stage	Total	Tubing	Casing	
Crew Leave Yard	10/24/2008 22:00							
Arrive at Location from Service Center	10/24/2008 23:10							
Assessment Of Location Safety Meeting	10/24/2008 23:15							
Rig-Up Equipment	10/24/2008 23:30							
Pre-Job Safety Meeting	10/25/2008 03:00							
Start Job	10/25/2008 03:37							TD 5187 TP 5187 SJ 47.69 FC 5139.31 MUD 10.0
Prime Pumps	10/25/2008 03:38		1.5	2			30.0	
Test Lines	10/25/2008 03:39		0.5				4120.0	TEST TO 4000
Pump Spacer 1	10/25/2008 03:41		4	30			43.0	FRESH WATER
Pump Spacer 2	10/25/2008 03:50		8	20			240.0	FRESH WATER AND POLYFLAKE
Pump Lead Cement	10/25/2008 03:55		8	112.6			780.0	408 SKS 12.8 # YIELD 1.55 WATER 7.15
Pump Tail Cement	10/25/2008 04:13		8	93.7			690.0	368 SKS 13.2 # YIELD 1.43 WATER 6.19
Shutdown	10/25/2008 04:26							
Clean Lines	10/25/2008 04:27							CLEANS PUMPS AND LINES BEFORE DROPPING TOP PLUG
Drop Top Plug	10/25/2008 04:34							
Pump Displacement	10/25/2008 04:35		8	79.7			1098.0	2% KCL WATER
Slow Rate	10/25/2008 04:43		2	70			825.0	

Activity Description	Date/Time	Cht #	Rate bbl/min	Volume bbl		Pressure psig		Comments
				Stage	Total	Tubing	Casing	
Bump Plug	10/25/2008 04:47		2	79.7			1990.0	HOLD PRESSURE FOR 5 MINUTES
End Job	10/25/2008 04:52							
Check Floats	10/25/2008 04:52							
Other	10/25/2008 04:53							DID NOT GET RETURNS UNTIL 46 GONE ON LEAD CEMENT GOOD RETURNS REST OF JOB
Other	10/25/2008 04:54							DID NOT MOVE PIPE DURING JOB
Other	10/25/2008 04:55							THANK YOU FOR USING HALLIBURTON DIRK HAYES AND CREW

4 1/2 PRODUCTION



Event Log

1	START JOB	03:39:14	2	FILL LINES	03:39:41	3	TEST LINES	03:41:51
4	WATER SPACER	03:43:25	5	POLYFLAKE SPACER	03:51:42	6	LEAD CEMENT	03:57:04
7	TAIL CEMENT	04:15:20	8	SHUTDOWN	04:27:11	9	CLEAN LINES	04:30:28
10	DROP PLUG	04:35:42	11	KCL DISPLACEMENT	04:36:22	12	SLOW RATE	04:44:52
13	BUMP PLUG	04:48:54	14	CHECK FLOATS	04:49:52	15	END JOB	04:51:13

Customer: CHEVRON
 OPERATOR JAMES JOHNSTON
 ADC USED YES

Job Date: 10-25-08
 CEMENTER DIRK HAYES
 CO REP RANDY MORGAN

Ticket #: 6254410
 TRUCK ELITE 4
 LEASE SKR 598-36-AV-18

CemWin v1.7.2
 25-Oct-08 05:39