
CHEVRON - MID-CONTINENT EBIZ

**SKR 598-36-AV-17
SKINNER RIDGE
Garfield County , Colorado**

Cement Surface Casing

13-Sep-2008

Job Site Documents

The Road to Excellence Starts with Safety

Sold To #: 338668	Ship To #: 2666607	Quote #:	Sales Order #: 6170928
Customer: CHEVRON - MID-CONTINENT EBIZ	Customer Rep: Meier, Dan		
Well Name: SKR	Well #: 598-36-AV-17	API/UWI #: 05-045-16275	
Field: SKINNER RIDGE	City (SAP): PARACHUTE	County/Parish: Garfield	State: Colorado
Lat: N 39.573 deg. OR N 39 deg. 34 min. 21.533 secs.	Long: W 108.34 deg. OR W -109 deg. 39 min. 35.953 secs.		
Contractor: H&P 318	Rig/Platform Name/Num: H&P 318		
Job Purpose: Cement Surface Casing			
Well Type: Development Well	Job Type: Cement Surface Casing		
Sales Person: HARTLEY, RICHARD	Srvc Supervisor: DANIEL, EVERETT	MBU ID Emp #: 337325	

Job Personnel

HES Emp Name	Exp Hrs	Emp #	HES Emp Name	Exp Hrs	Emp #	HES Emp Name	Exp Hrs	Emp #
DANIEL, EVERETT Dean	5.25	337325	FRAMPTON, KIRK	5.25	438934	GREGORY, JON D	5.25	439067
hendrick, barb	5.25	450458	HOEFER, BRYAN D	5.25	415775	MANSPEAKER, GUY E	5.25	330171

Equipment

HES Unit #	Distance-1 way	HES Unit #	Distance-1 way	HES Unit #	Distance-1 way	HES Unit #	Distance-1 way
10567589C	120 mile	10719773	120 mile	10724643	120 mile	10829468	120 mile
10886087	120 mile	10938658	120 mile	10995027	120 mile	6334	120 mile

Job Hours

Date	On Location Hours	Operating Hours	Date	On Location Hours	Operating Hours	Date	On Location Hours	Operating Hours
09/13/2008	5.25	2						
TOTAL	5.25	2	Total is the sum of each column separately					

Job

Formation Name	Top	Bottom	Called Out	Date	Time	Time Zone
Formation Depth (MD)			On Location	13 - Sep - 2008	00:30	MST
Form Type		BHST	Job Started	13 - Sep - 2008	03:45	MST
Job depth MD	1470. ft	Job Depth TVD	Job Completed	13 - Sep - 2008	05:44	MST
Water Depth		Wk Ht Above Floor	Departed Loc	13 - Sep - 2008	06:50	MST
Perforation Depth (MD)	From	To		13 - Sep - 2008	09:00	MST

Well Data

Description	New / Used	Max pressure psig	Size in	ID in	Weight lbm/ft	Thread	Grade	Top MD ft	Bottom MD ft	Top TVD ft	Bottom TVD ft
12 1/4 Open Hole				12.25					1470.		
8.625 Surface Casing	Unknown		8.625	8.097	24.				1470.		

Sales/Rental/3rd Party (HES)

Description	Qty	Qty uom	Depth	Supplier
PLUG,CMTG,TOP,8 5/8,HWE,7.20 MIN/8.09 MA	1	EA		

Tools and Accessories

Fluid Data									
Stage/Plug #: 1									
Fluid #	Stage Type	Fluid Name	Qty	Qty uom	Mixing Density lbm/gal	Yield ft ³ /sk	Mix Fluid Gal/sk	Rate bbl/min	Total Mix Fluid Gal/sk
1	Red Dye Poly Flake Spacer		30	bbl	.	.0	.0	.0	
2	Lead Cement	VERSACEM (TM) SYSTEM (452010)	285.0	sacks	12.3	2.37	13.76		13.45
	0.125 lbm	POLY-E-FLAKE (101216940)							
	0.25 %	D-AIR 3000 (101007446)							
	13.448 Gal	FRESH WATER							
3	Tail Cement	VERSACEM (TM) SYSTEM (452010)	164.0	sacks	12.8	2.11	11.79		11.48
	0.125 lbm	POLY-E-FLAKE (101216940)							
	0.25 %	D-AIR 3000 (101007446)							
	11.483 Gal	FRESH WATER							
4	Displacement		89.8	bbl	.	.0	.0	.0	
Calculated Values		Pressures		Volumes					
Displacement	89.8	Shut In: Instant		Lost Returns		Cement Slurry	182.4	Pad	
Top Of Cement	Surface	5 Min		Cement Returns	70	Actual Displacement	89.8	Treatment	
Frac Gradient		15 Min		Spacers	30	Load and Breakdown		Total Job	
Rates									
Circulating	6	Mixing	7	Displacement	8	Avg. Job	7		
Cement Left In Pipe	Amount	43.7 ft	Reason	Shoe Joint					
Frac Ring # 1 @	ID	Frac ring # 2 @	ID	Frac Ring # 3 @	ID	Frac Ring # 4 @	ID		
The Information Stated Herein Is Correct				Customer Representative Signature					

The Road to Excellence Starts with Safety

Sold To #: 338668	Ship To #: 2666607	Quote #:	Sales Order #: 6170928
Customer: CHEVRON - MID-CONTINENT EBIZ	Customer Rep: Meier, Dan		
Well Name: SKR	Well #: 598-36-AV-17	API/UWI #: 05-045-16275	
Field: SKINNER RIDGE	City (SAP): PARACHUTE	County/Parish: Garfield	State: Colorado
Legal Description:			
Lat: N 39.573 deg. OR N 39 deg. 34 min. 21.533 secs.		Long: W 108.34 deg. OR W -109 deg. 39 min. 35.953 secs.	
Contractor: H&P 318	Rig/Platform Name/Num: H&P 318		
Job Purpose: Cement Surface Casing	Ticket Amount:		
Well Type: Development Well	Job Type: Cement Surface Casing		
Sales Person: HARTLEY, RICHARD	Srvc Supervisor: DANIEL, EVERETT	MBU ID Emp #: 337325	

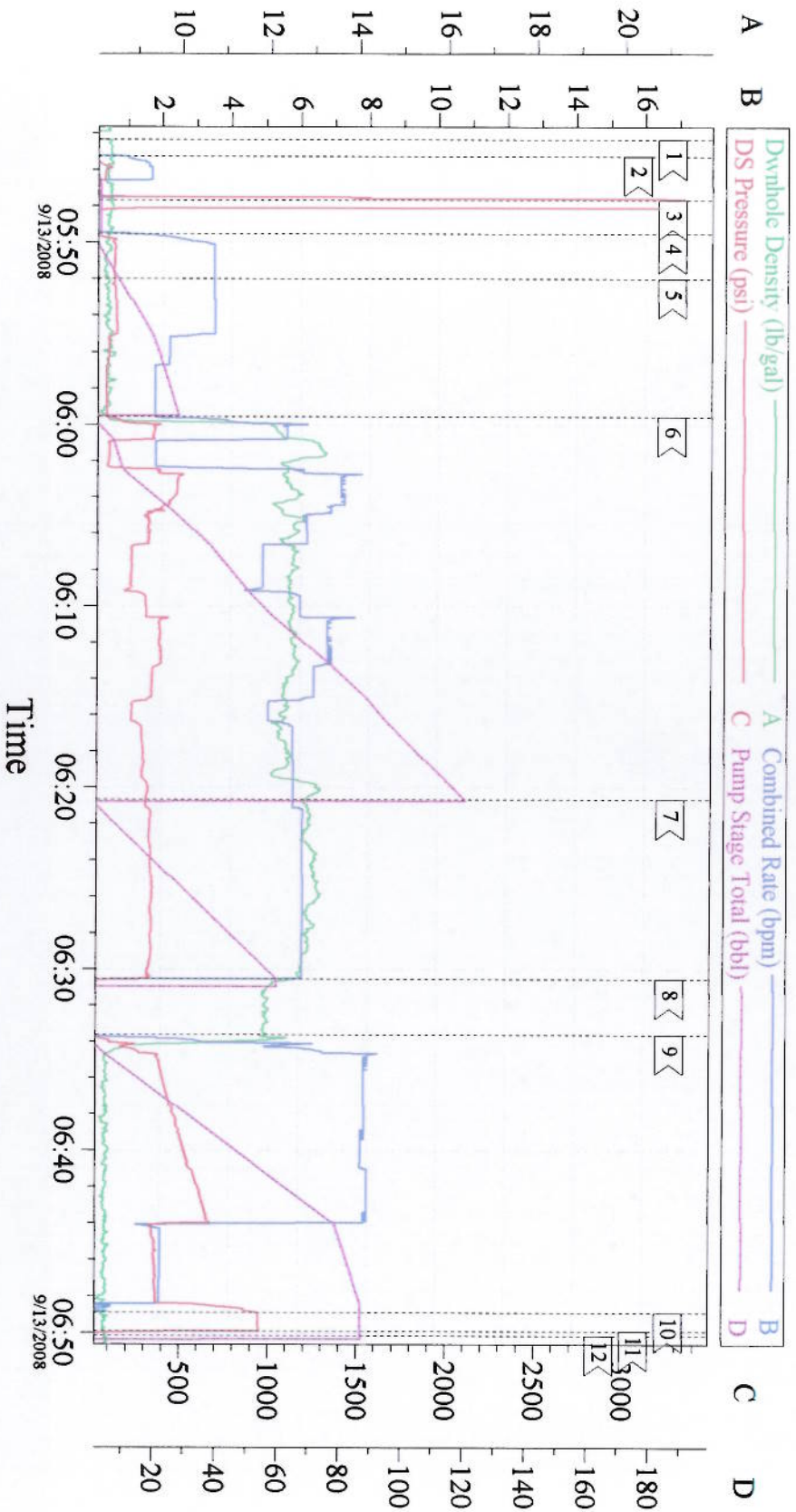
Activity Description	Date/Time	Cht #	Rate bbl/ min	Volume bbl		Pressure psig		Comments
				Stage	Total	Tubing	Casing	
Call Out	09/13/2008 00:30							
Depart Yard Safety Meeting	09/13/2008 02:00							Checked out HES pump (Elite 3) One Freuhauf
Depart from Service Center or Other Site	09/13/2008 02:05							
Arrive at Location from Service Center	09/13/2008 03:45							Arrived .75 hrs. early
Assessment Of Location Safety Meeting	09/13/2008 03:45							
Comment	09/13/2008 03:50							Consult with Co. Rep. Verified calculations and materials on location including H2O and Cement totals
Safety Meeting - Pre Rig-Up	09/13/2008 04:00							
Rig-Up Equipment	09/13/2008 04:05							Elite 3, Silo, Compressor Trailer, Two Water Hoses, Iron to floor, Iron to Pit
Rig-Up Completed	09/13/2008 04:45							
Safety Meeting - Pre Job	09/13/2008 05:30							Discussed job procedures and safety issues
Start Job	09/13/2008 05:44							
Prime Pumps	09/13/2008 05:45		2	2			45.0	Fresh Water
Test Lines	09/13/2008 05:47		0.5	0.1			3400. 0	Fresh Water
Pump Spacer 1	09/13/2008 05:49		4	30			120.0	Dyed Poly Flake Spacer

Cementing Job Log

Activity Description	Date/Time	Cht #	Rate bbl/ min	Volume bbl		Pressure psig		Comments
				Stage	Total	Tubing	Casing	
Pump Lead Cement	09/13/2008 05:59		7	120.8			510.0	285 sks of VERSACEM @ 12.3# -2.38 yield - 13.75 H2O requirement
Pump Tail Cement	09/13/2008 06:20		6	61.6			325.0	164 sks of VERSACEM @ 12.8# -2.11 yield - 11.75 H2O requirement
Shutdown	09/13/2008 06:30							
Drop Top Plug	09/13/2008 06:30							
Pump Displacement	09/13/2008 06:33		8	89.8			630.0	
Slow Rate	09/13/2008 06:42		2	79.8			340.0	
Bump Plug	09/13/2008 06:48		2	89.8			340.0	Bumped Plug @ calculated displacement
Check Floats	09/13/2008 06:49						948.0	Floats Held
End Job	09/13/2008 06:50							
Safety Meeting - Pre Rig- Down	09/13/2008 07:00							
Rig-Down Equipment	09/13/2008 07:10							
Rig-Down Completed	09/13/2008 08:00							
Depart Location for Service Center or Other Site	09/13/2008 09:00							

Total Depth = 1470 , Total Casing = 1455.8 , Shoe Joint =43.7 , Mud Weight =9.25# . Casing remained stationary throughout job and was chained down. 70 bbls of cement returned to surface. 259 bbls of H2O were used for the job and 30 bbls were used for clean up (after the job) The plug landed at calculated displacement and the floats held.

Thank you for using Grand Junction Halliburton Dean Daniel & Crew



Event Log

1 < Start Job	05:44:22	2 < Prime Lines	05:45:16	3 < Test Lines	05:47:40
4 < Pump Dyed Polyflake Spacer	05:49:31	5 < Pump H2O Spacer	05:51:59	6 < Pump Lead Cement	05:59:35
7 < Pump Tail Cement	06:20:40	8 < Shut Down/Drop Plug	06:30:33	9 < Pump Displacement	06:33:38
10 < Bump Plug	06:48:54	11 < Check Floats	06:49:54	12 < End Job	06:50:10

Customer: Chevron
Well Number: SKR-598-AV-17
Supervisor: Dean Daniel

Job Date: 9/13/2008
Job Type: SURFACE
Company Rep.: Brent Swank

Ticket #: 6170928
ADC Used: YES
Operator: Jon Gregory