

HALLIBURTON

**CHEVRON - MID-CONTINENT EBIZ
11111 S WILCREST DR - DO NOT MAIL
HOUSTON, Texas**

SKR 598-36-AV-16

H&P 318

Post Job Summary

Cement Production Casing

Prepared for: RANDY MORGAN
Date Prepared: 10-28-08
Version: 1

Service Supervisor: GASAWAY, SCOTT

Submitted by:

HALLIBURTON

The Road to Excellence Starts with Safety

Sold To #: 338668	Ship To #: UNKNOWN	Quote #:	Sales Order #: 6264041
Customer: CHEVRON - MID-CONTINENT EBIZ	Customer Rep: Morgan, Randy		
Well Name: SKR	Well #: 598-36-AV-16	API/UWI #:	
Field: SKINNER RIDGE	City (SAP): DEBEQUE	County/Parish: Garfield	State: Colorado
Contractor: CHEVRON	Rig/Platform Name/Num: H&P 318		
Job Purpose: Cement Production Casing			
Well Type: Development Well	Job Type: Cement Production Casing		
Sales Person: HARTLEY, RICHARD	Srv Supervisor: GASAWAY, SCOTT	MBU ID Emp #: 246149	

Job Personnel

HES Emp Name	Exp Hrs	Emp #	HES Emp Name	Exp Hrs	Emp #	HES Emp Name	Exp Hrs	Emp #
CALDWELL, JEFFREY S	5	369111	CHASE, BRAD Waddell	5	422281	GASAWAY, SCOTT Eldon	5	246149
MILLER, KEVIN Paul	5	443040	SMITH, DUSTIN Michael	5	418015			

Equipment

HES Unit #	Distance-1 way	HES Unit #	Distance-1 way	HES Unit #	Distance-1 way	HES Unit #	Distance-1 way
10719782	120 mile	10867304	120 mile	10872429	120 mile	10897909	120 mile
10951249	120 mile	10998054	120 mile	6334	120 mile		

Job Hours

Date	On Location Hours	Operating Hours	Date	On Location Hours	Operating Hours	Date	On Location Hours	Operating Hours
10-28-08	5	1.5						
TOTAL								

Total is the sum of each column separately

Job

Formation Name	Formation Depth (MD)	Top	Bottom	Job Times	Date	Time	Time Zone
Form Type			BHST	Called Out	27 - Oct - 2008	23:00	MST
Job depth MD	6677. ft		Job Depth TVD	On Location	28 - Oct - 2008	03:00	MST
Water Depth			Wk Ht Above Floor	Job Started	28 - Oct - 2008	06:36	MST
Perforation Depth (MD)	From	To		Job Completed	28 - Oct - 2008	07:58	MST
				Departed Loc	28 - Oct - 2008	11:00	MST

Well Data

Description	New / Used	Max pressure psig	Size in	ID in	Weight lbm/ft	Thread	Grade	Top MD ft	Bottom MD ft	Top TVD ft	Bottom TVD ft
7 7/8 Open Hole Section				7.875					6700		
4.5 Production Casing	Unknown		4.5	4.	11.6				6677		

Sales/Rental/3rd Party (HES)

Description	Qty	Qty uom	Depth	Supplier
PLUG,CMTG,TOP,4 1/2,HWE,3.65 MIN/4.14 MA	1	EA		

Tools and Accessories

Type	Size	Qty	Make	Depth	Type	Size	Qty	Make	Depth	Type	Size	Qty	Make
Guide Shoe					Packer					Top Plug	4.5	1	
Float Shoe					Bridge Plug					Bottom Plug			
Float Collar					Retainer					SSR plug set			
Insert Float										Plug Container	4.5	1	
Stage Tool										Centralizers			

Miscellaneous Materials

Gelling Agt	Conc	Surfactant	Conc	Acid Type	Qty	Conc	%
Treatment Fld	Conc	Inhibitor	Conc	Sand Type	Size	Qty	

Fluid Data									
Stage/Plug #: 1									
Fluid #	Stage Type	Fluid Name	Qty	Qty uom	Mixing Density lbm/gal	Yield ft ³ /sk	Mix Fluid Gal/sk	Rate bbl/min	Total Mix Fluid Gal/sk
1	Dyed PolyFlake Spacer		50.0	bbl	8.33	.0	.0	8.0	
2	Lead Cement	EXTENDACEM (TM) SYSTEM (452981)	390.0	sacks	12.8	1.55	7.15	8.0	7.67
		7.674 Gal FRESH WATER							
3	Tail Cement	EXTENDACEM (TM) SYSTEM (452981)	637.0	sacks	13.2	1.43	6.19	8.0	7.0
4	H2O Displacement		102.8	bbl	.	.0	.0	10.0	
Calculated Values		Pressures		Volumes					
Displacement	102.8	Shut In: Instant		Lost Returns	NO	Cement Slurry	270	Pad	
Top Of Cement	72	5 Min		Cement Returns	0	Actual Displacement	102.8	Treatment	
Frac Gradient		15 Min		Spacers	50	Load and Breakdown		Total Job	422.6
Rates									
Circulating	RIG	Mixing	8	Displacement	10	Avg. Job	8		
Cement Left In Pipe	Amount	39.32 ft	Reason	Shoe Joint					
Frac Ring # 1 @	ID	Frac ring # 2 @	ID	Frac Ring # 3 @	ID	Frac Ring # 4 @	ID		
The Information Stated Herein Is Correct				Customer Representative Signature					

The Road to Excellence Starts with Safety

Sold To #: 338668	Ship To #: UNKNOWN	Quote #:	Sales Order #: 6264041
Customer: CHEVRON - MID-CONTINENT EBIZ		Customer Rep: Morgan, Randy	
Well Name: SKR	Well #: 598-36-AV-16	API/UWI #:	
Field: SKINNER RIDGE	City (SAP): Debeque	County/Parish: Garfield	State: Colorado
Legal Description:			
Lat: N 0 deg. OR N 0 deg. 0 min. 0 secs.		Long: E 0 deg. OR E 0 deg. 0 min. 0 secs.	
Contractor: CHEVRON		Rig/Platform Name/Num: H&P318	
Job Purpose: Cement Production Casing		Ticket Amount:	
Well Type: Development Well		Job Type: Cement Production Casing	
Sales Person: HARTLEY, RICHARD		Srv Supervisor: GASAWAY, SCOTT	
		MBU ID Emp #: 246149	

Activity Description	Date/Time	Cht #	Rate bbl/min	Volume bbl		Pressure psig		Comments
				Stage	Total	Tubing	Casing	
Call Out	10/27/2008 23:00							
Depart Yard Safety Meeting	10/28/2008 00:30							
Crew Leave Yard	10/28/2008 00:45							
Arrive At Loc	10/28/2008 02:30							
Assessment Of Location Safety Meeting	10/28/2008 02:35							TD-6700, TP-6677, SJ-39.32, MW-10.4, 4.5 CSG, 7 7/8 HOLE, L-80 GRADE, 11.6#, SURFACE SET AT 1539, 8 5/8 CSG, 32#, J-55 GRADE, D-0040 HEAD USED, CO-MAN VERIFIED PLUG WAS LOADED AND ZIP TIED
Pre-Rig Up Safety Meeting	10/28/2008 02:45							
Rig-Up Equipment	10/28/2008 03:00							
Rig-Up Completed	10/28/2008 04:00							
Safety Meeting - Pre Job	10/28/2008 05:30							
Start Job	10/28/2008 06:36							
Test Lines	10/28/2008 06:36							TEST LINES TO 5000 PSI
Pump Spacer	10/28/2008 06:38		8	50			390.0	50 BBLS OF H2O WITH LAST 20 CONTAINING POLYFLAKE AND DYE
Pump Lead Cement	10/28/2008 06:51		8	107.6			1180.0	390 SKS, 1.55 YIELD, 7.15 GAL/SK, 12.8 PPG

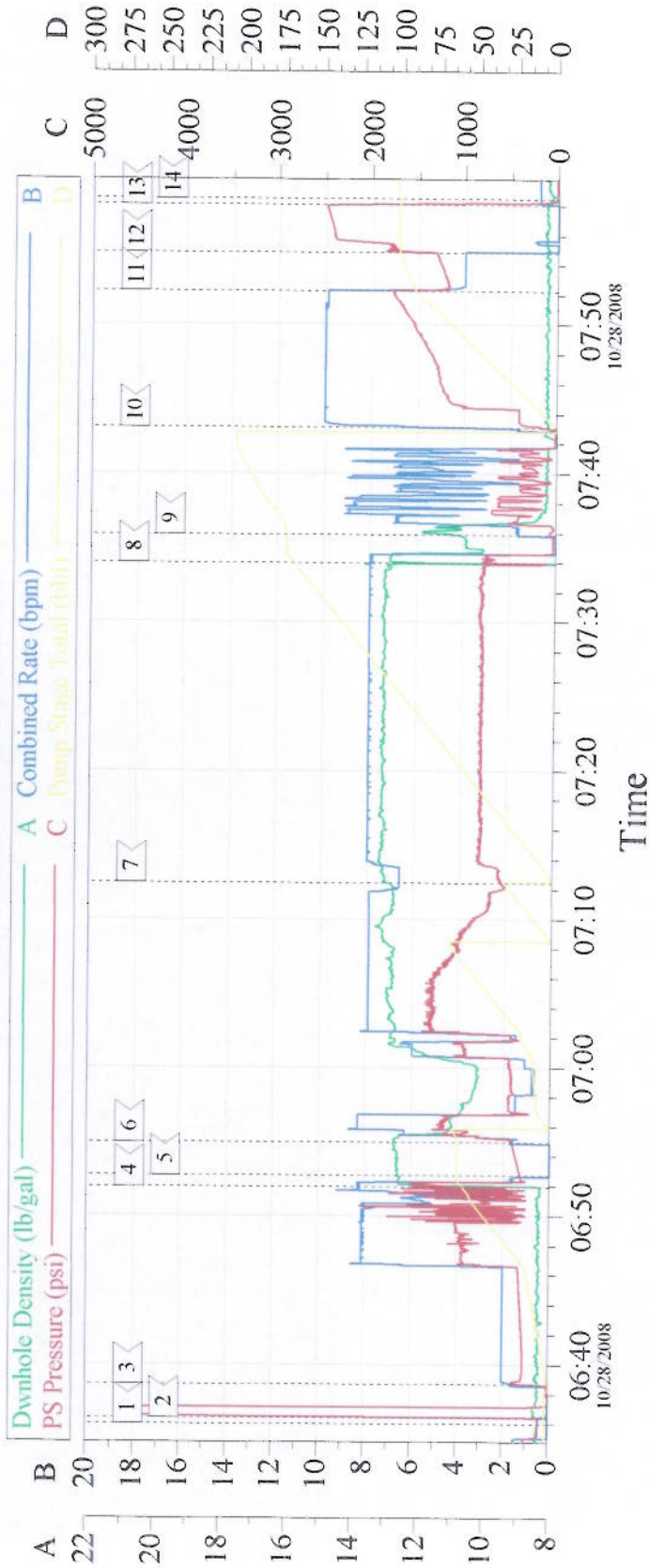
Cementing Job Log

Activity Description	Date/Time	Cht #	Rate bbl/ min	Volume bbl		Pressure psig		Comments
				Stage	Total	Tubing	Casing	
Comment	10/28/2008 06:52							SHUT DOWN DUE TO CEMENT SPILL, OPERATOR HAD JUST STARTED LEAD CEMENT AND WE NOTICED CEMENT WAS HITTING GROUND. TOLD OPERATOR TO SHUT DOWN. FOUND WHERE CEMENT WAS LEAKING FROM, OPERATOR HAD ACCIDENTLY KNOCKED OPEN A VALVE THAT WAS BEHIND HIM WHICH WAS
Comment	10/28/2008 06:52							THE VALVE FOR THE CROSSOVER, RESUMED PUMPING LEAD CEMENT AFTER GETTING TUB UP AND AND THE WEIGHT UP. THE TOTAL SPILL WAS ROUGHLY 8-10 BBLS
Pump Tail Cement	10/28/2008 07:12		8	162.2			800.0	637 SKS, 1.43 YIELD, 6.19 GAL/SK, 13.2 PPG
Shutdown	10/28/2008 07:33							
Drop Top Plug	10/28/2008 07:34							AWAY, CO-MAN VERIFIED PLUG WENT
Clean Lines	10/28/2008 07:35							WASH PUMPS AND LINES TO CELLAR
Pump Displacement	10/28/2008 07:43		10				400.0	H2O
Slow Rate	10/28/2008 07:52		4	90			1300.0	
Bump Plug	10/28/2008 07:54		4	102.8			1400.0	PRESSURED UP TO 2400 PSI
Check Floats	10/28/2008 07:58							HOLDING, 1 BBL BACK
End Job	10/28/2008 07:58							
Post-Job Safety Meeting (Pre Rig-Down)	10/28/2008 08:05							

Cementing Job Log

Activity Description	Date/Time	Cht #	Rate bbl/ min	Volume bbl		Pressure psig		Comments
				Stage	Total	Tubing	Casing	
Rig-Down Equipment	10/28/2008 08:20							
Rig-Down Completed	10/28/2008 09:30							
Safety Meeting - Departing Location	10/28/2008 10:30							
Crew Leave Location	10/28/2008 11:00							
Comment	10/28/2008 11:30							PIPE WAS CHAINED DOWN, NO PIPE MOVEMENT DURING CEMENTING, GOOD RETURNS UNTIL 60 BBLS AWAY THEN THEY SLOWED DOWN CONSIDERABLY LAST 5 BBLS,
Comment	10/28/2008 11:30							THANKS FROM SCOTT GASAWAY AND CREW

4 1/2 LONGSTRING



Event Log					
1	START	06:36:00	2	TEST LINES	06:36:26
3	PUMP H2O/DYE/POLYFLAKE	06:38:40	4	PUMP LEAD CEMENT	06:51:59
5	SHUT DOWN	06:52:43	6	PUMP P LEAD CEMENT	06:54:58
7	PUMP TAIL CEMENT	07:12:26	8	SHUT DOWN/DROP TOP PLUG	07:33:57
9	WASH PUMPS AND LINES TO PIT	07:35:52	10	PUMP H2O DISPLACEMENT	07:43:07
11	SLOW RATE	07:52:16	12	BUMP PLUG	07:54:50
13	CHECK FLOATS	07:58:02	14	END JOB	07:58:27

Customer: TRUCK OPERATOR ELITE#11 BRAD CHASE LEASE	Job Date: 10-28-08 CEMENTER SCOTT GASAWAY WELL # 598-36-AV-16	Ticket #: 6264041 ADC USED YES CO REP RANDY MORGAN