

---

# **CHEVRON - MID-CONTINENT EBIZ**

---

**SKR 598-36-AV-16  
SKINNER RIDGE  
Garfield County , Colorado**

**Cement Surface Casing**  
**23-Sep-2008**

**Job Site Documents**

## The Road to Excellence Starts with Safety

Sold To #: 338668		Ship To #: 2666606		Quote #:		Sales Order #: 6192140	
Customer: CHEVRON - MID-CONTINENT EBIZ				Customer Rep: MORGAN, RANDY, TATUM, ELMER			
Well Name: SKR		Well #: 598-36-AV-16		API/UWI #: 05-045-16274			
Field: SKINNER RIDGE		City (SAP): PARACHUTE		County/Parish: Garfield		State: Colorado	
Lat: N 39.573 deg. OR N 39 deg. 34 min. 21.598 secs.				Long: W 108.34 deg. OR W -109 deg. 39 min. 35.816 secs.			
Contractor: H&P 318		Rig/Platform Name/Num: H&P 318					
Job Purpose: Cement Surface Casing							
Well Type: Development Well				Job Type: Cement Surface Casing			
Sales Person: HARTLEY, RICHARD				Srv Supervisor: BLANCHETTE, JAMES		MBU ID Emp #: 371360	
Job Personnel							
HES Emp Name	Exp Hrs	Emp #	HES Emp Name	Exp Hrs	Emp #	HES Emp Name	Exp Hrs
BLANCHETTE, JAMES George	5	371360	CLARKE, GERALD C	5	441763	STILLSON, ERIC W	5
Equipment							
HES Unit #	Distance-1 way	HES Unit #	Distance-1 way	HES Unit #	Distance-1 way	HES Unit #	Distance-1 way
10822535	120 mile	10871245	120 mile	10886087	120 mile	10951247	120 mile
Job Hours							
Date	On Location Hours	Operating Hours	Date	On Location Hours	Operating Hours	Date	On Location Hours
09-23-08	5	1					
TOTAL		Total is the sum of each column separately					
Job				Job Times			
Formation Name				Date	Time	Time Zone	
Formation Depth (MD)	Top	Bottom		Called Out	23 - Sep - 2008	14:40	MST
Form Type	BHST			On Location	23 - Sep - 2008	17:20	MST
Job depth MD	1516. ft			Job Started	23 - Sep - 2008	21:24	MST
Water Depth	Wk Ht Above Floor			Job Completed	23 - Sep - 2008	22:21	MST
Perforation Depth (MD)	From	To		Departed Loc			
Well Data							
Description	New / Used	Max pressure psig	Size in	ID in	Weight lbm/ft	Thread	Grade
OPEN HOLE				12.25			
SURFACE CASING	New		8.625		24.		J-55
Sales/Rental/3 <sup>rd</sup> Party (HES)							
Description	Qty	Qty uom	Depth	Supplier			
PORT. DAS W/CEMWIN;ACQUIRE W/HES, ZI	1	JOB					
ADC (AUTO DENSITY CTRL) SYS, /JOB,ZI	1	JOB					
Tools and Accessories							
Type	Size	Qty	Make	Depth	Type	Size	Qty
Guide Shoe					Packer		
Float Shoe					Bridge Plug		
Float Collar					Retainer		
Insert Float							
Stage Tool							
Miscellaneous Materials							
Gelling Agt		Conc		Surfactant		Conc	
Treatment Fld		Conc		Inhibitor		Conc	
				Acid Type		Qty	
				Sand Type		Size	
						Qty	%



Fluid Data									
Stage/Plug #: 1									
Fluid #	Stage Type	Fluid Name	Qty	Qty uom	Mixing Density lbm/gal	Yield ft <sup>3</sup> /sk	Mix Fluid Gal/sk	Rate bbl/min	Total Mix Fluid Gal/sk
1	Dyed Spacer		50.0	bbl	8.33	.0	.0	.0	
	0.5 lbm/bbl	POLY-E-FLAKE (101216940)							
	5 lbm/bbl	OXIDE - RED 1 (100008158)							
2	Lead Cement	VERSACEM (TM) SYSTEM (452010)	300.0	sacks	12.3	2.38	13.75		
	0.125 lbm	POLY-E-FLAKE (101216940)							
	0.25 %	D-AIR 3000 (101007446)							
	13.418 Gal	FRESH WATER							
3	Tail Cement	VERSACEM (TM) SYSTEM (452010)	164.0	sacks	12.8	2.11	11.75		
	0.125 lbm	POLY-E-FLAKE (101216940)							
	0.25 %	D-AIR 3000 (101007446)							
	11.456 Gal	FRESH WATER							
4	Fresh Water Spacer		95.2	bbl	8.33	.0	.0	.0	
Calculated Values		Pressures		Volumes					
Displacement	95.2	Shut In: Instant		Lost Returns	NO	Cement Slurry	188.8	Pad	
Top Of Cement	SURFACE	5 Min		Cement Returns	90	Actual Displacement	93	Treatment	
Frac Gradient		15 Min		Spacers	50	Load and Breakdown		Total Job	
Rates									
Circulating		Mixing	8	Displacement	10	Avg. Job			
Cement Left In Pipe	Amount	47.1 ft	Reason	Shoe Joint 47.1					
Frac Ring # 1 @	ID	Frac ring # 2 @	ID	Frac Ring # 3 @	ID	Frac Ring # 4 @	ID		
The Information Stated Herein Is Correct				Customer Representative Signature					

*The Road to Excellence Starts with Safety*

Sold To #: 338668	Ship To #: 2666606	Quote #:	Sales Order #: 6192140
Customer: CHEVRON - MID-CONTINENT EBIZ		Customer Rep: MORGAN, RANDY, TATUM, ELMER	
Well Name: SKR	Well #: 598-36-AV-16	API/UWI #: 05-045-16274	
Field: SKINNER RIDGE	City (SAP): PARACHUTE	County/Parish: Garfield	State: Colorado
Legal Description:			
Lat: N 39.573 deg. OR N 39 deg. 34 min. 21.598 secs.		Long: W 108.34 deg. OR W -109 deg. 39 min. 35.816 secs.	
Contractor: H&P 318	Rig/Platform Name/Num: H&P 318		
Job Purpose: Cement Surface Casing		Ticket Amount:	
Well Type: Development Well	Job Type: Cement Surface Casing		
Sales Person: HARTLEY, RICHARD	Srv Supervisor: BLANCHETTE, JAMES	MBU ID Emp #: 371360	

Activity Description	Date/Time	Cht #	Rate bbl/min	Volume bbl		Pressure psig		Comments
				Stage	Total	Tubing	Casing	
Safety Meeting	09/23/2008 15:45							
Depart from Service Center or Other Site	09/23/2008 16:00							
Arrive at Location from Service Center	09/23/2008 17:20							RIG STILL RUNNING CASING
Safety Meeting - Assessment of Location	09/23/2008 17:30							
Safety Meeting - Pre Rig-Up	09/23/2008 17:35							
Rig-Up Equipment	09/23/2008 17:45							1-F450 PICK UP, 1-HT400 PUMP TRUCK, 1-BLOWER TRIALER, 1-CEMENT BULK SILO
Safety Meeting - Pre Job	09/23/2008 21:00							
Start Job	09/23/2008 21:24							TD 1516, TP 1544, SJ 47.10, FC 1496.9, MW# 9.6
Pump Water	09/23/2008 21:24		1	2			72.0	FRESH WATER
Test Lines	09/23/2008 21:27		0.4				3200.0	TEST LINES TO 3000 PSI
Pump Spacer	09/23/2008 21:28		8	50			407.0	30 BBLS OF FRESH WATER, 20 BBLS OF DYED H2O WITH POLYFLAKE



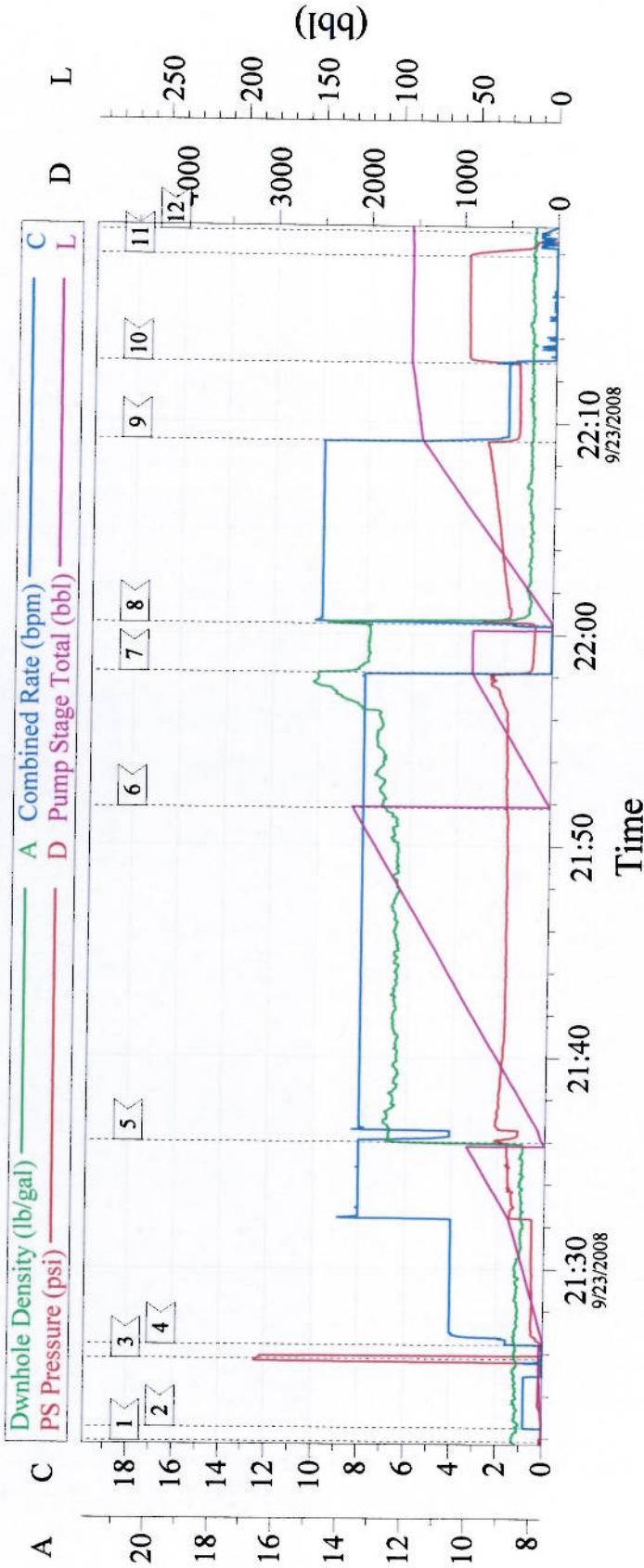
## Cementing Job Log

Pump Lead Cement	09/23/2008 21:38		8	127.2			495.0	300 SKS, VERSACEM, WT 12.3, YIELD 2.38. WATER 13.75, HAD TO BRING RATE DOWN TO 4BPM FOR A MINUTE COMPRESSOR MOTOR DIED, RESTARTED AND BROUGHOUT RATE BACK TO 8 BPM FOR THE REST OF THE CEMENT
------------------	---------------------	--	---	-------	--	--	-------	---

## Cementing Job Log

Activity Description	Date/Time	Cht #	Rate bbl/min	Volume bbl		Pressure psig		Comments
				Stage	Total	Tubing	Casing	
Pump Tail Cement	09/23/2008 21:54		8	51			575.0	164 SKS, VERSACEM, WT 12.8, YIELD 2.11, WATER 11.75, BROUGHTOUT SHOE CEMENT UP TO 15.0 PPG
Shutdown	09/23/2008 22:00							
Drop Plug	09/23/2008 22:02							TOP PLUG
Pump Displacement	09/23/2008 22:02		10	95.2			712.0	FRESH WATER
Slow Rate	09/23/2008 22:11		2	85			387.0	
Bump Plug	09/23/2008 22:15		2	95.2			934.0	WE CIRCULATED 90 BBLs OF CEMENT TO THE PIT=213 SKS OF CEMENT, GOOD RETURNS THROUGHOUT JOB, NO MOVEMENT OF PIPE THROUGHOUT JOB
Check Floats	09/23/2008 22:20							WE RELEASED PRESSURE BACK TO THE TRUCK WE HAD 1/2 BBL OF WATER COME BACK AND THE FLOAT HELD
End Job	09/23/2008 22:21							THANK YOU FOR USING GRAND JUNCTION HALLIBURTON, JIM BLANCHETTE AND CREW

# 8 5/8 SURFACE



Event Log			
Intersection	PP	Intersection	PP
1 START JOB	21:21:51 19.00	2 FILL LINES	21:22:31 2.000
3 TEST LINES	21:25:45 3074	4 PUMP H2O SPACER	21:26:25 13.43
5 PUMP LEAD CEMENT	21:35:59 480.0	6 PUMP TAIL CEMENT	21:51:47 458.2
7 SHUTDOWN/DROP PLUG	21:58:10 401.1	8 PUMP H2O DISPLACEMENT	22:00:29 202.6
9 SLOW RATE	22:09:08 598.1	10 BUMP PLUG	22:12:49 502.2
11 CHECK FLOAT	22:17:51 934.0	12 END JOB	22:19:00 -11.87

Customer: CHEVRON	Job Date: 09-23-08	Ticket #: 6192140	HALLIBURTON
Well Desc: SKR 598-36-AV-16	Job Type: 8 5/8 SURFACE	ADC USED: YES	Cem Win v1.7.2
CO REP RANDY MORGAN	CEMENTER JIM BLANCHETTE	OPERATOR & PUMP# ERIC STILLSON/ ELITE#8	23-Sep-08 22:26



EVENT #	EVENT	VOLUME	SACKS	WEIGHT	YIELD	GAL/ SK
1	Start Job					
	FILL LINES	2				
6	Test Lines	3000.0				
9	H2O Spacer	50.0				
	Lead Cement	127.2	300	12.3	2.38	13.75
15	Tail Cement	61.6	164	12.8	2.11	11.75
	Shut Down/Clean Lines	0.0				
22	Drop Plug	0.0				
23	Displace with H2O	95.2				
	SLOW RATE	85.0				
26	Land Plug	322 + 500				
2	Release Psi / Job Over	0.0				
			Do Not Overdisplace			
DISPLACEMENT	TOTAL PIPE	SHOE JOINT LENGTH	FLOAT COLLAR	BBL/FT	H2O REQ.	
95.20	1544	47.10	1496.90	0.0636	350	
PSI TO LIFT	541	*****Use Mud Scales on Each Tier*****				
Total Displacement	95.20					
CALCULATED DIFFERENTIAL PSI		322	TOTAL FLUID PUMPED		336	
Collapse	1370	Burst	2950	SO#	6192140	