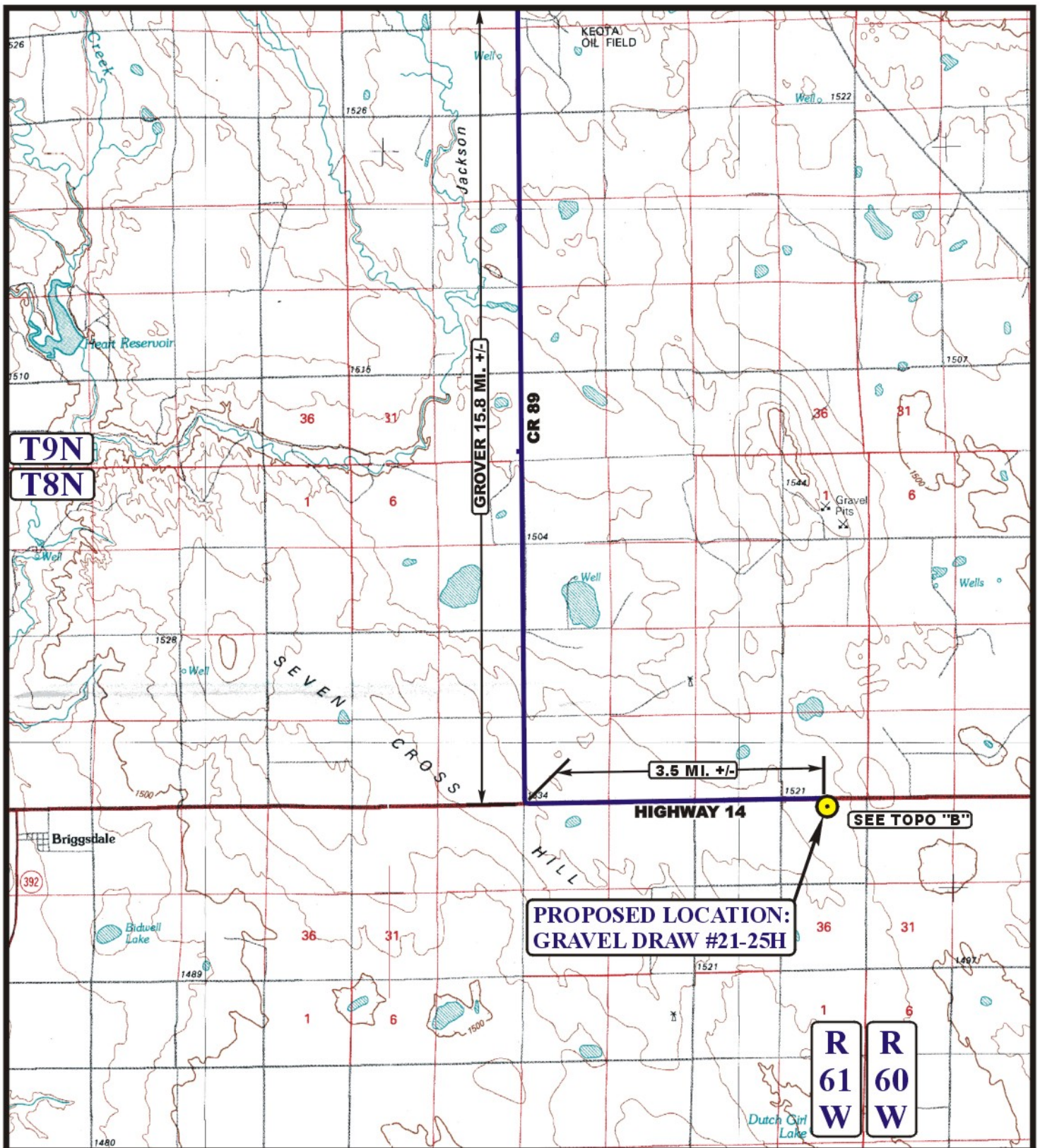


EOG RESOURCES, INC.
GRAVEL DRAW #21-25H
SECTION 25, T8N, R61W, 6th P.M.

PROCEED IN A SOUTHEASTERLY DIRECTION FROM GROVER, COLORADO ALONG COUNTY ROAD 390 APPROXIMATELY 0.2 MILES TO THE JUNCTION OF THIS ROAD AND COUNTY ROAD 89 TO THE SOUTH; TURN RIGHT AND PROCEED IN A SOUTHERLY DIRECTION APPROXIMATELY 15.6 MILES TO THE JUNCTION OF THIS ROAD AND HIGHWAY 14 TO THE EAST; TURN LEFT AND PROCEED IN AN EASTERLY DIRECTION APPROXIMATELY 3.5 MILES TO THE BEGINNING OF THE PROPOSED ACCESS TO THE SOUTH; FOLLOW ROAD FLAGS IN A SOUTHERLY, THEN SOUTHEASTERLY DIRECTION APPROXIMATELY 371' TO THE PROPOSED LOCATION.

TOTAL DISTANCE FROM GROVER, COLORADO TO THE PROPOSED WELL LOCATION IS APPROXIMATELY 19.4 MILES.



LEGEND:

PROPOSED LOCATION



Utah Engineering & Land Surveying
 85 South 200 East Vernal, Utah 84078
 (435) 789-1017 * FAX (435) 789-1813



EOG RESOURCES, INC.

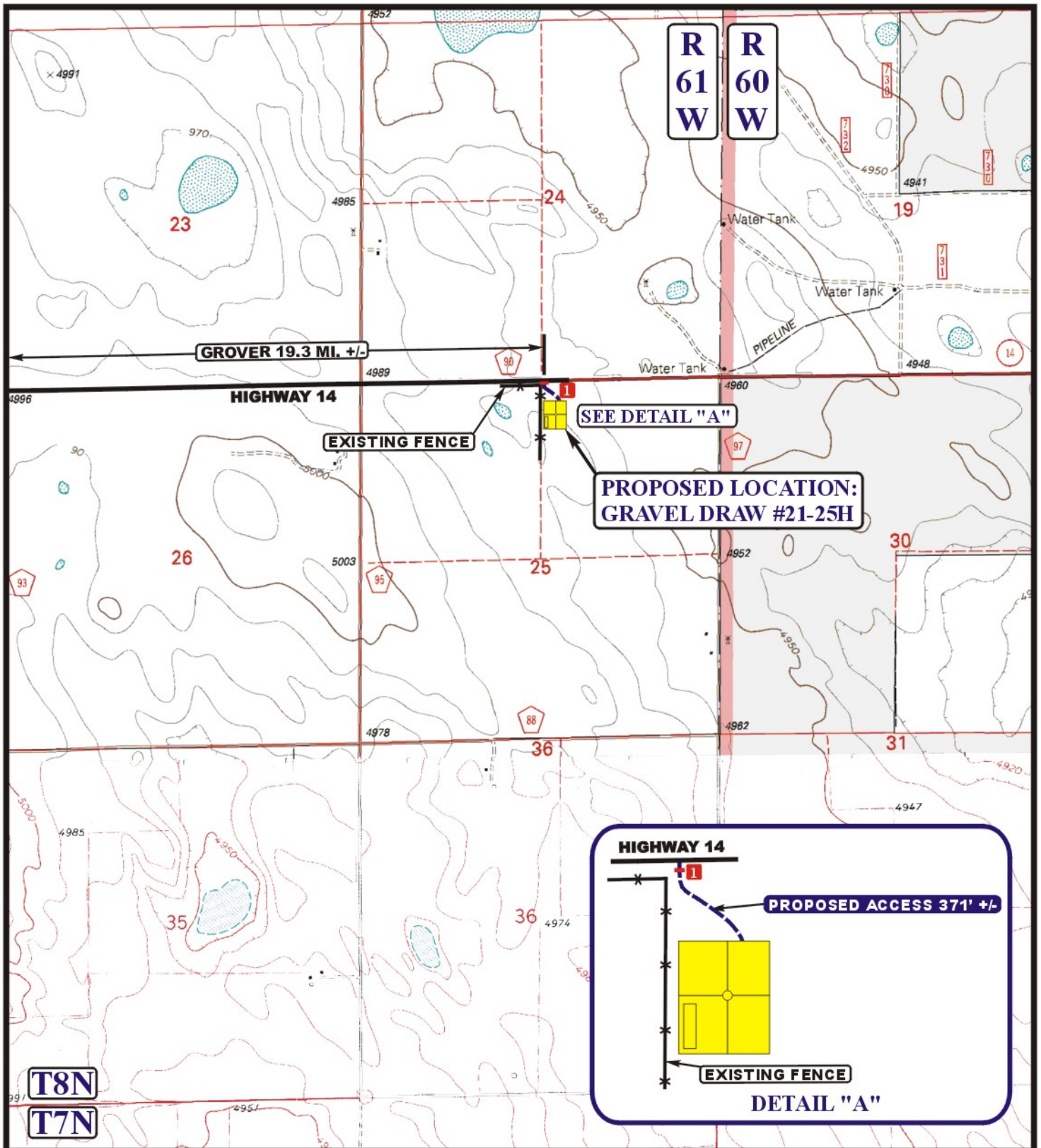
GRAVEL DRAW #21-25H
 SECTION 25, T8N, R61W, 6th P.M.
 501' FNL 2440' FEL

TOPOGRAPHIC
 MAP

03 25 11
 MONTH DAY YEAR

SCALE: 1:100,000 DRAWN BY: C.A.G. REVISED: 00-00-00





LEGEND:

- EXISTING ROAD
- PROPOSED ACCESS ROAD
- EXISTING FENCE
- 18" CMP REQUIRED



Uintah Engineering & Land Surveying
 85 South 200 East Vernal, Utah 84078
 (435) 789-1017 * FAX (435) 789-1813



EOG RESOURCES, INC.

GRAVEL DRAW #21-25H
SECTION 25, T8N, R61W, 6th P.M.
501' FNL 2440' FEL

TOPOGRAPHIC
MAP

03 **25** **11**
 MONTH DAY YEAR

SCALE: 1" = 2000' DRAWN BY: C.A.G. REVISED: 00-00-00

B
TOPO