

EOG RESOURCES, INC.

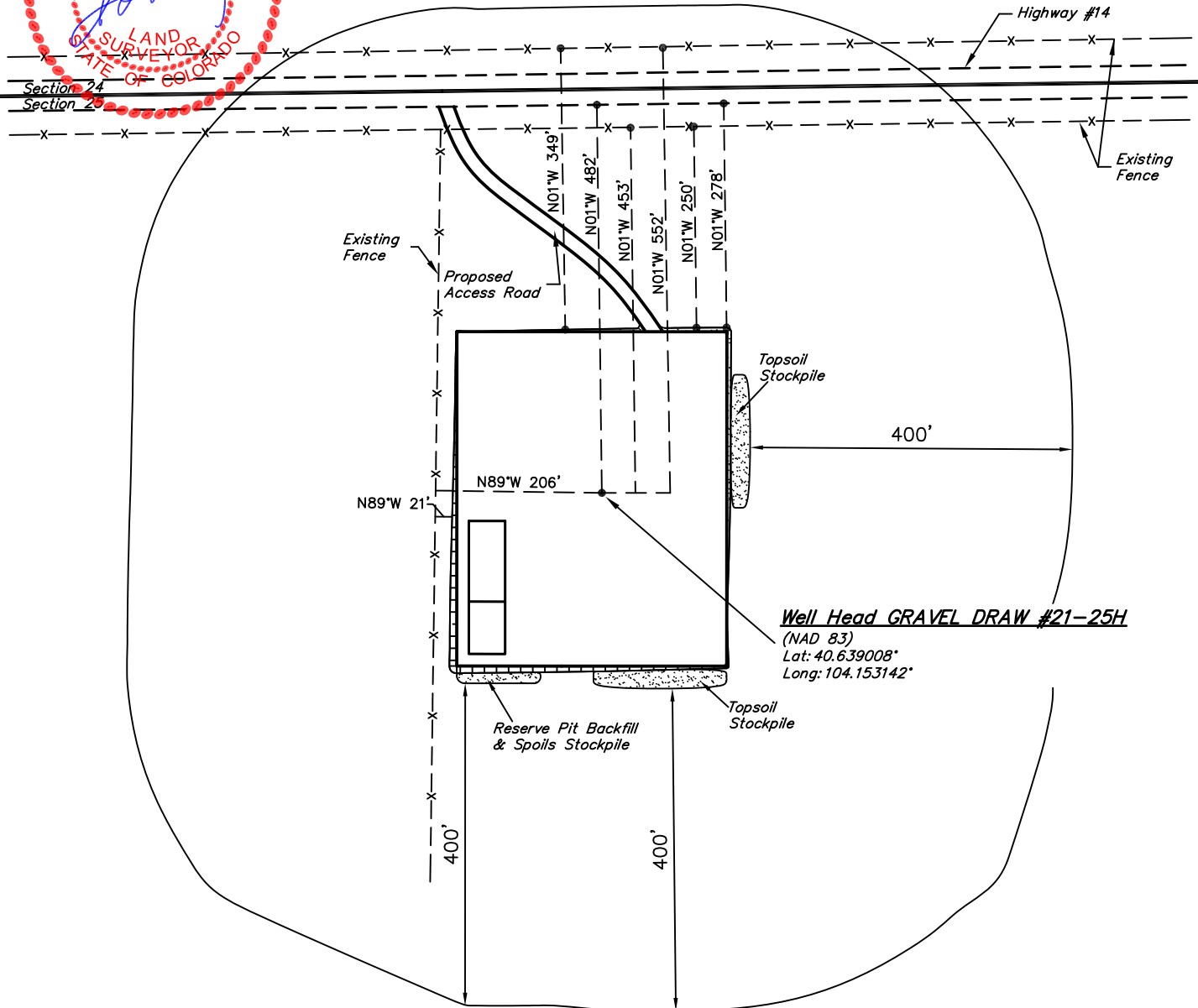
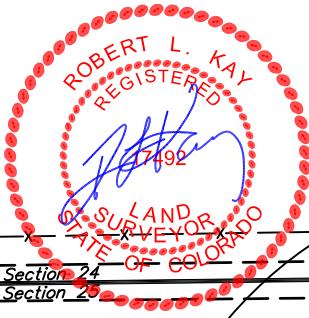
ADDENDUM TO LEGAL PLAT FOR

GRAVEL DRAW #21-25H
SECTION 25, T8N, R61W, 6th P.M.
501' FNL 2440' FEL

SCALE: 1" = 200'

DATE: 03-30-11

DRAWN BY: K.O.



EOG RESOURCES, INC.

CONSTRUCTION LAYOUT FOR

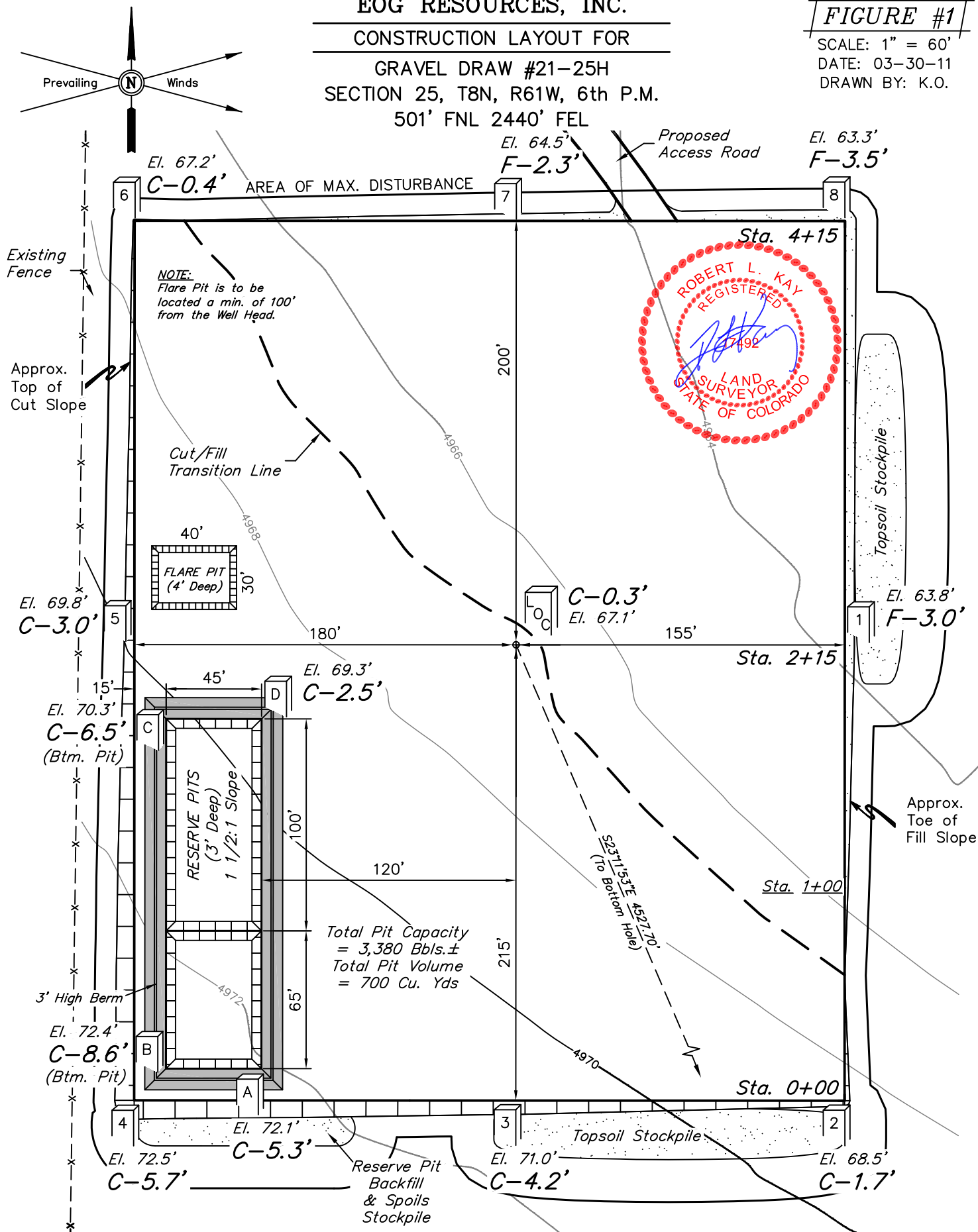
GRAVEL DRAW #21-25H
SECTION 25, T8N, R61W, 6th P.M.
501' FNL 2440' FEL

FIGURE #1

SCALE: 1" = 60'

DATE: 03-30-11

DRAWN BY: K.O.



Elev. Ungraded Ground At Loc. Stake = 4967.1'
FINISHED GRADE ELEV. AT LOC. STAKE = 4966.8'

UINTAH ENGINEERING & LAND SURVEYING
85 So. 200 East * Vernal, Utah 84078 * (435) 789-1017

EOG RESOURCES, INC.

CONSTRUCTION LAYOUT CROSS SECTIONS FOR

GRAVEL DRAW #21-25H

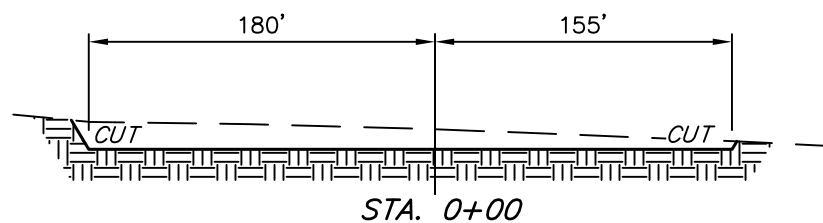
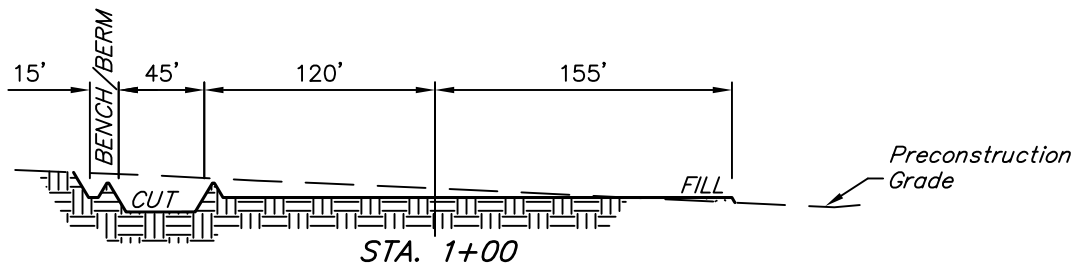
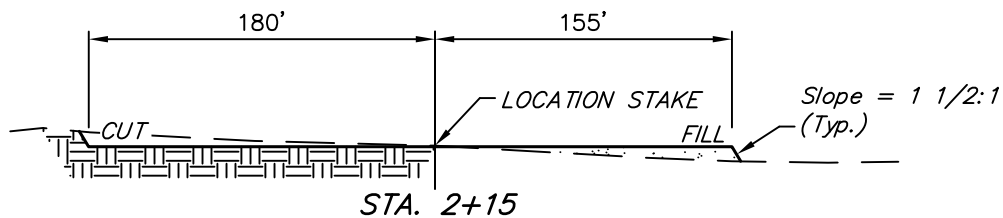
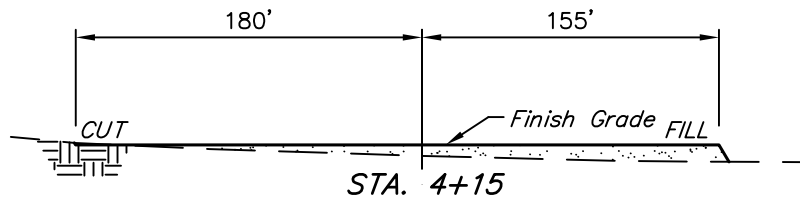
SECTION 25, T8N, R61W, 6th P.M.

501' FNL 2440' FEL

FIGURE #2

1" = 40'
X-Section
Scale
1" = 100'

DATE: 03-30-11
DRAWN BY: K.O.



NOTE:

Topsoil should not be Stripped Below Finished Grade on Substructure Area.

APPROXIMATE ACREAGES

WELL SITE DISTURBANCE = ± 4.066 ACRES
ACCESS ROAD DISTURBANCE = ± 0.255 ACRES
TOTAL = ± 4.321 ACRES

* NOTE:
FILL QUANTITY INCLUDES 5% FOR COMPACTION

APPROXIMATE YARDAGES

(6") Topsoil Stripping = 2,750 Cu. Yds.
Remaining Location = 5,900 Cu. Yds.
TOTAL CUT = 8,650 CU.YDS.
FILL = 5,550 CU.YDS.

EXCESS MATERIAL = 3,100 Cu. Yds.
Topsoil & Pit Backfill (1/2 Pit Vol.) = 3,100 Cu. Yds.
EXCESS UNBALANCE = 0 Cu. Yds.
(After Interim Rehabilitation)

UINTAH ENGINEERING & LAND SURVEYING
85 So. 200 East * Vernal, Utah 84078 * (435) 789-1017

EOG RESOURCES, INC.

TYPICAL RIG LAYOUT FOR

GRAVEL DRAW #21-25H

SECTION 25, T8N, R61W, 6th P.M.

501' FNL 2440' FEL

FIGURE #3

SCALE: 1" = 60'

DATE: 03-30-11

DRAWN BY: K.O.

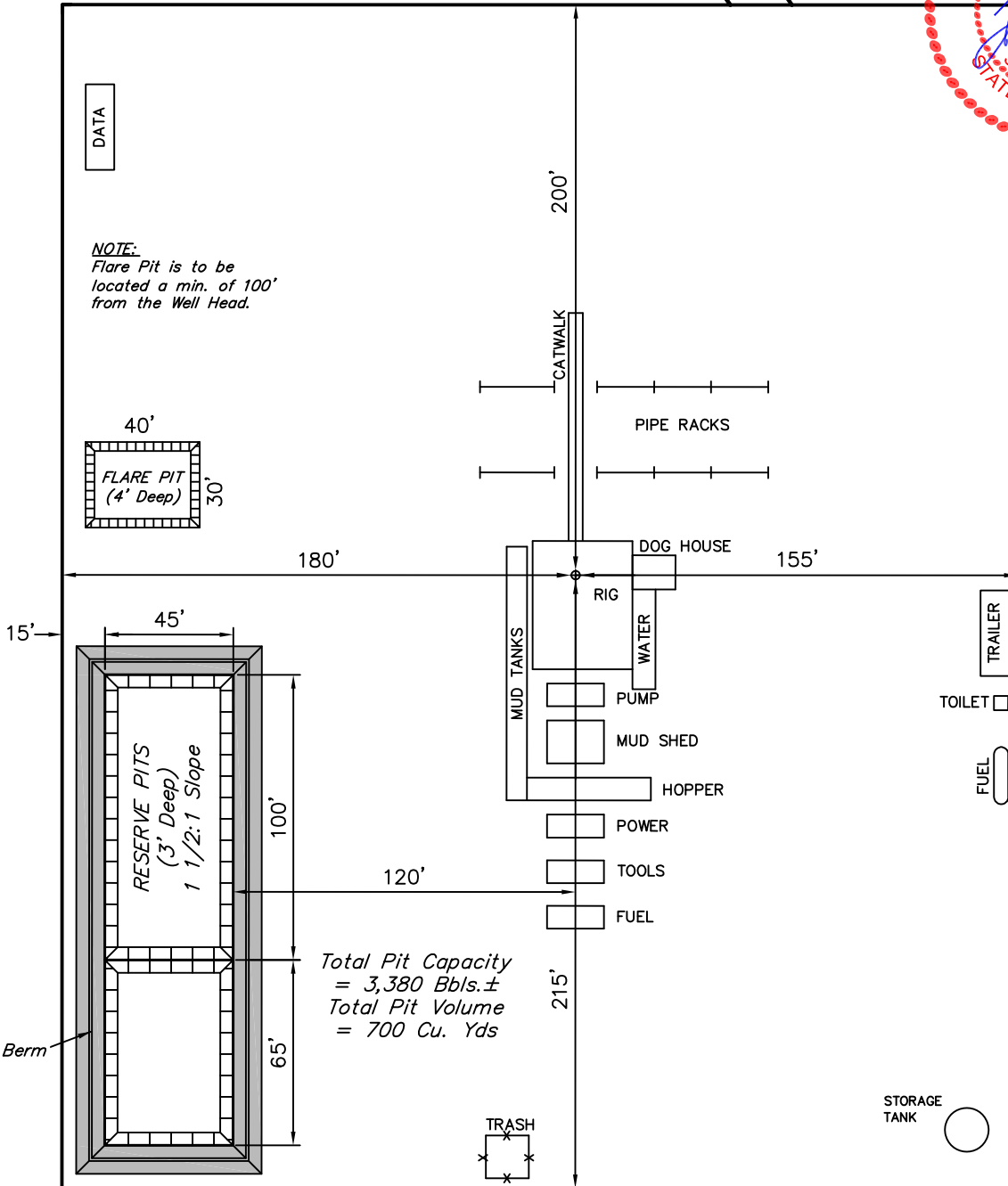
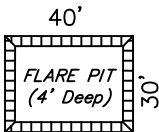


Proposed
Access Road



DATA

NOTE:
Flare Pit is to be
located a min. of 100'
from the Well Head.



Total Pit Capacity
= 3,380 Bbls.±
Total Pit Volume
= 700 Cu. Yds

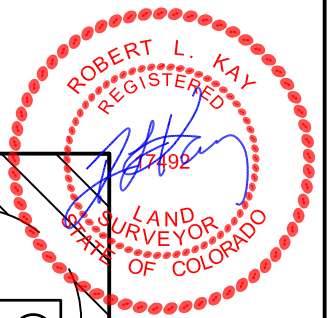
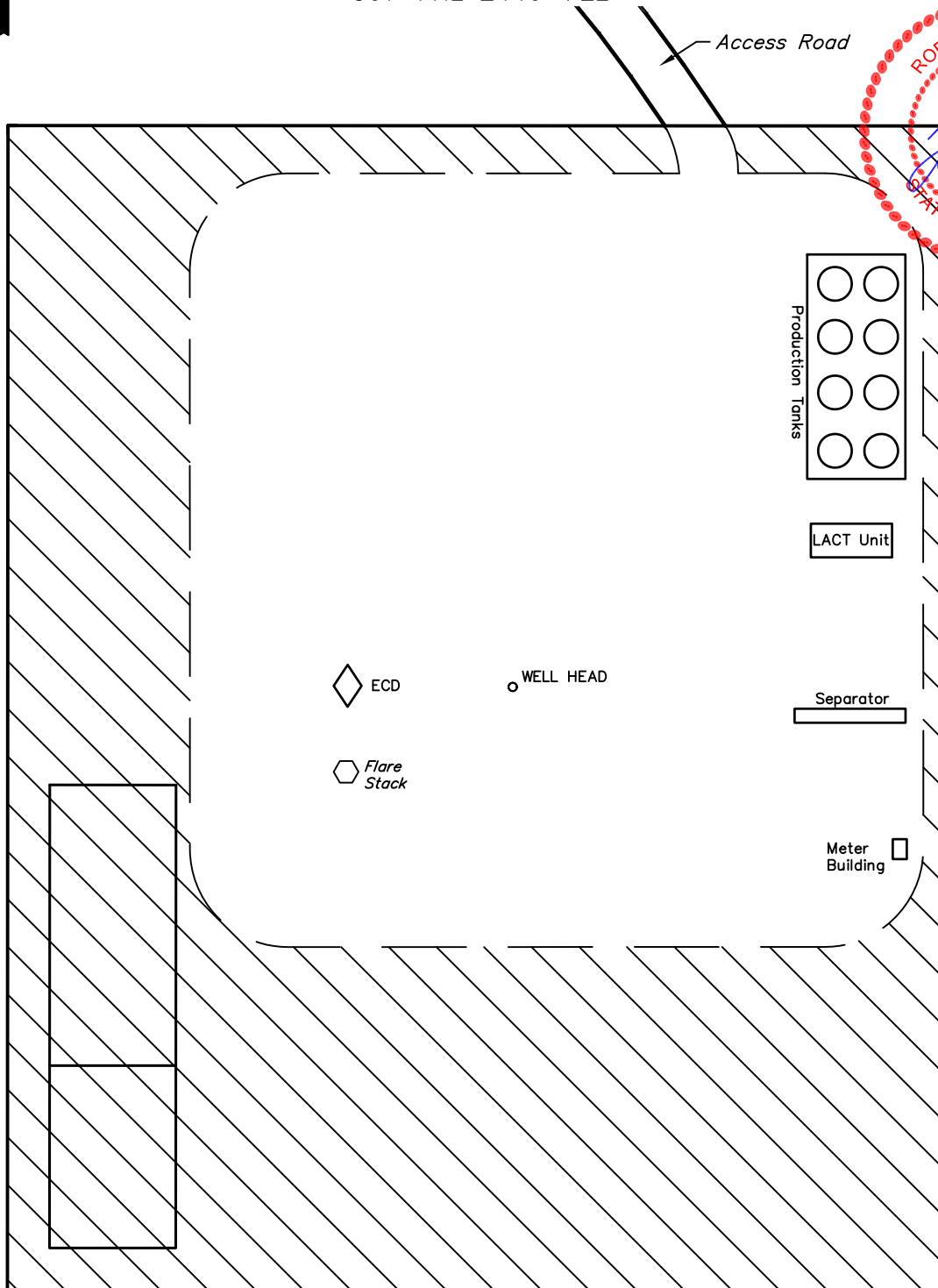
UINTAH ENGINEERING & LAND SURVEYING

85 So. 200 East * Vernal, Utah 84078 * (435) 789-1017

EOG RESOURCES, INC.
RECLAMATION DIAGRAM FOR
GRAVEL DRAW #21-25H
SECTION 25, T8N, R61W, 6th P.M.
501' FNL 2440' FEL

FIGURE #4

SCALE: 1" = 60'
DATE: 03-30-11
DRAWN BY: K.O.



APPROXIMATE ACREAGES
UN-RECLAIMED = ± 1.553 ACRES



EOG RESOURCES, INC.

LOCATION DRAWING FOR

GRAVEL DRAW #21-25H

SECTION 25, T8N, R61W, 6th P.M.

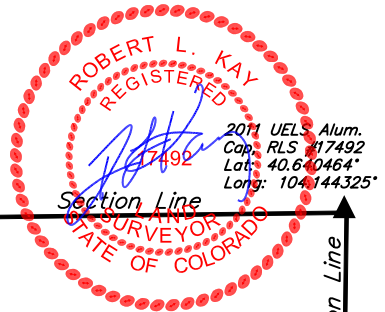
501' FNL 2440' FEL

FIGURE #5

W.C. Private Alum.
Cap. RLS #17492
Lat: 40.640511°
Long: 104.153853°

Highway #14

S89°17'44"W - 2645.39' (Meas.)



2011 UELS Alum.
Cap. RLS #17492
Lat: 40.640464°
Long: 104.144325°

S00°49'59"W
50.00' (Meas.)

Proposed
Access Road

N89°W 2821'
S80°W 3028' (To Power Line)
S80°W 3028' (To Water Well)
S79°W 30.43 Miles (To Railroad)
S80°W 3028' (Building)

| LINE TABLE | | | |
|------------|------------------|---------|--------|
| LINE | DESCRIPTION | BEARING | LENGTH |
| L1 | To Highway #14 | N01°W | 482' |
| L2 | To Property Line | N89°W | 205' |

TRACY
LUCILLE M.

1/16 Section Line

N00°47'47"E 2644.74' (Meas.)

1/4 Section Line



SCALE
DATE: 03-31-11
DRAWN BY: K.O.

1/16 Section Line

1/4 Section Line

25

R 61
W 60

2002 Private Alum.
Cap. 0.3' Below Ground
Lat: 40.633206°
Long: 104.144458°

PLANT COMMUNITY

- ☐ DISTURBED GRASSLAND
- ☐ NATIVE GRASSLAND
- ☐ SHRUB LAND
- ☐ PLAINS RIPARIAN
- ☐ MOUNTAIN RIPARIAN
- ☐ FOREST LAND
- ☐ WETLANDS AQUATIC
- ☐ ALPINE
- ☐ OTHER (Describe): _____

CURRENT LAND USE

- CROP LAND: ☐ IRRIGATED ☐ DRY LAND ☐ IMPROVED PASTURE ☐ HAY MEADOW ☐ CRP
- NON-CROP LAND: ☐ RANGELAND ☐ TIMBER ☐ RECREATIONAL ☐ OTHER (Describe) _____
- SUBDIVIDED: ☐ INDUSTRIAL ☐ COMMERCIAL ☐ RESIDENTIAL _____

FUTURE LAND USE

- CROP LAND: ☐ IRRIGATED ☐ DRY LAND ☐ IMPROVED PASTURE ☐ HAY MEADOW ☐ CRP
- NON-CROP LAND: ☐ RANGELAND ☐ TIMBER ☐ RECREATIONAL ☐ OTHER (Describe) _____
- SUBDIVIDED: ☐ INDUSTRIAL ☐ COMMERCIAL ☐ RESIDENTIAL _____