

Andrews, David



PLUGGING CHANGES

**From:** Andrews, David  
**Sent:** Monday, May 23, 2011 10:58 AM  
**To:** 'Cramer, Roy W. (RoyCramer)'; blau@blm.gov  
**Cc:** bill\_kraft@blm.gov; Swank, Brent (BSWA); Buddy\_L\_Thompson@blm.gov; Browning, Chuck; Peterson, Diane L. (DLPE); Krabacher, Jay; Longworth, Mike; Kellerby, Shaun; STEVE HALCOMB  
**Subject:** RE: Purdy #3X-1 - P&A

Roy,

Thanks for the additional information. With cement to surface on the 7" casing, this email confirms my verbal approval of plugging changes, which I discussed with Brent Swank on the phone today. I understand that a balanced cement plug was pumped in the 7" casing across the surface casing shoe, and a balanced cement plug will be pumped in the 7" casing from approximately 60' to surface.

Thanks,

David D. Andrews, P.E., P.G.  
Engineering Supervisor - Western Colorado

State of Colorado  
Oil and Gas Conservation Commission  
707 Wapiti Court, Suite 204  
Rifle, Colorado 81650  
Office Phone: (970) 625-2497 Ext. 1  
Cell Phone: (970) 456-5262  
Fax: (970) 625-5682  
E-mail: [David.Andrews@state.co.us](mailto:David.Andrews@state.co.us)  
Website: <http://www.colorado.gov/cogcc>

CC: COGCC Well File, API No. 05-103-08703

-----Original Message-----

**From:** Cramer, Roy W. (RoyCramer) [<mailto:RoyCramer@chevron.com>]  
**Sent:** Monday, May 23, 2011 10:53 AM  
**To:** Andrews, David; [blau@blm.gov](mailto:blau@blm.gov)  
**Cc:** [bill\\_kraft@blm.gov](mailto:bill_kraft@blm.gov); Swank, Brent (BSWA); [Buddy\\_L\\_Thompson@blm.gov](mailto:Buddy_L_Thompson@blm.gov); Browning, Chuck; Peterson, Diane L. (DLPE); Krabacher, Jay; Longworth, Mike; Kellerby, Shaun; STEVE HALCOMB  
**Subject:** RE: Purdy #3X-1 - P&A

David;  
Please find attached a Wellbore diagram of the Purdy 3X-1.

When I went through the original cement job on the 7" casing, I noted that they had cement to surface as stated below:

11/81: Set 7" Casing at 6470', pump 1500 sxs expanding cement, drop plug & displace w/ 251 bbls (cement returns to surface at 170 bbls).

08/81: Set 9-5/8" casing at 2965', pumped 450 sxs Econolite + 150 sxs G cement w/ 2% CaCl<sub>2</sub>, returned 61 bbls to pit, RIH w/ 90' of 1" pipe and topped off with 75 sxs G cement w/ 2% CaCl<sub>2</sub>.

## Andrews, David

---

**From:** Andrews, David  
**Sent:** Thursday, May 19, 2011 8:17 AM  
**To:** 'Swank, Brent (BSWA)'; Peterson, Diane L. (DLPE); Cramer, Roy W. (RoyCramer); Browning, Chuck; Longworth, Mike; Kellerby, Shaun  
**Cc:** betty\_lau@blm.gov; bill\_kraft@blm.gov; Buddy\_L\_Thompson@blm.gov; STEVE HALCOMB; Krabacher, Jay  
**Subject:** RE: RWSU PUDRY 3X1 P&A  
**Attachments:** 400149239\_approved[1].pdf  
**Importance:** High

Brent,


This is a fee well, but BLM has offered to witness the P&A. I understand that Steve Halcomb will be on location. Please contact me if you run into any problems or need to modify the P&A procedure. COGCC's approved plugging orders are attached for your reference.

CHANGE TO PLUGGING PROCEDURE: I scanned through the approved procedure, and I would prefer that you move your perfs up for the surface casing shoe squeeze. The surface casing shoe is at 2,965', and I would like to move the perfs from the current approved depth of 3,090' to 50' below the shoe at 3,015'. Please let me know if you have any logistical problems with this change.

Thanks,

**David D. Andrews, P.E., P.G.**  
Engineering Supervisor - Western Colorado

**State of Colorado**  
**Oil and Gas Conservation Commission**  
707 Wapiti Court, Suite 204  
Rifle, Colorado 81650  
Office Phone: (970) 625-2497 Ext. 1  
Cell Phone: (970) 456-5262  
Fax: (970) 625-5682  
E-mail: [David.Andrews@state.co.us](mailto:David.Andrews@state.co.us)  
Website: <http://www.colorado.gov/cogcc>

  
COULD NOT SQUEEZE  
7" CSG CMT TO SURFACE.  
SEE 5/23/2011 EMAIL.  
D.A.

---

**From:** Swank, Brent (BSWA) [<mailto:BSWA@chevron.com>]  
**Sent:** Wednesday, May 18, 2011 6:26 PM  
**To:** Peterson, Diane L. (DLPE); Cramer, Roy W. (RoyCramer); Browning, Chuck; Andrews, David; Longworth, Mike; Kellerby, Shaun  
**Cc:** [betty\\_lau@blm.gov](mailto:betty_lau@blm.gov); [bill\\_kraft@blm.gov](mailto:bill_kraft@blm.gov); [Buddy\\_L\\_Thompson@blm.gov](mailto:Buddy_L_Thompson@blm.gov); STEVE HALCOMB  
**Subject:** RWSU PUDRY 3X1 P&A

Ladies and Gentlemen

Please be informed we have tentatively scheduled Halliburton to pump the first stage cement plug tomorrow 5-19-2011 @ 13:00.

Legal description

RANGLEY FIELD # 72370

WELL NAME PURDY 3X1

STATE LEASE # 47433

NE1/4 NE ¼ SECTION 1, T1, R102W

RIO BLANCO, COUNTY

API# 05-103-08703-00

Thank you



Brent Swank  
Chevron/MCA/D&C  
[bswa@chevron.com](mailto:bswa@chevron.com)  
Cell 307-799-8114

# Rangely Weber Sand Unit

## PURDY 3X1 Current Wellbore

03/15/11

Well Details:	
STATE & CO	CO - Rio Blanco
TWNS & RNG	T1N & R102W
SECTION	(NENE) 1
API	05-103-0870300
CHEVNO	AM9737

Casing Details:		P&A: PUR3X1 - CS39	
Type		Depth	
KB		5231	
GL		5217	
? in. ? #/ft. ?		0 - '?', ? sxs cmt	
9-5/8" in. 36 #/ft. K55		0 - 2965', 450 sxs cmt	
7" in. 26 #/ft. K55		0 - 1145',	
7" in. 23 #/ft. K55		1145 - 6472', 1500 sxs cmt	
in. #/ft.		-, sxs cmt	
Top Perf		5972	
Btm Perf		6375	
PBTD:		6435	
TD:		6472	

Formation	Depth
Niobrara	
Frontier	3145
Frontier Snd	3239
Mowry	3429
Dakota	3508
Morrison	3590
Curtis	4185
Entrada	
Carmel	4480
Navajo	
Chinle	5086
Shinarump	5239
Moenkopi	
Weber	5950

COGCC Regulations: Set Isolation Packer  
within 300' of perfs or 100' above liner

GOC_CALC	5561	
		FT
Weber 1a	5949	165
Weber 2	6114	
Weber 3a	6128	247
Weber 4	6219	
Weber 5a	6249	
Weber 6	6357	
Weber 7a	6358	
Weber 8		
Weber 9a		
Weber 10		
Weber 11a		
		412
OWC_CALC	6381	

KB 5231

GL 5217

? in. ? #/ft. ?

0 - '?', ? sxs cmt

7" in. 26 #/ft. K55

0 - 1145',

9-5/8" in. 36 #/ft. K55

0 - 2965', 450 sxs cmt

7" in. 23 #/ft. K55

1145 - 6472', 1500 sxs cmt

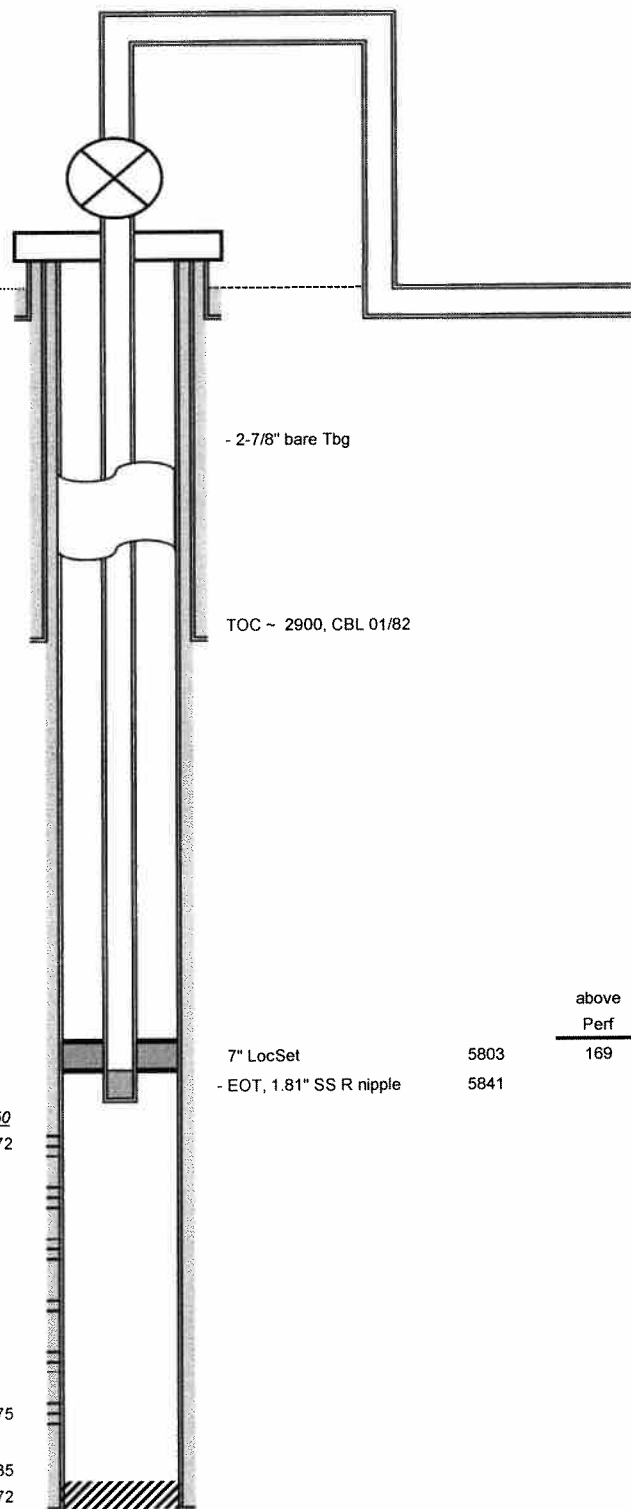
Weber 5950

Top Perf 5972

Btm Perf 6375

PBTD: 6435

TD: 6472



- 2-7/8" bare Tbg

TOC ~ 2900, CBL 01/82

7" LocSet 5803

- EOT, 1.81" SS R nipple 5841

above

Perf

169

### Notes:

- 09/08: PLS run 1.81" RZG plug @ 5831'.
- 11/81: Set 7" Casing at 6470', pump 1500 sxs expanding cement, drop plug & displace w/ 251 bbls (cement returns to surface at 170 bbl)s.
- 08/81: Set 9-5/8" casing at 2965', pumped 450 sxs Econolite + 150 sxs G cement w/ 2% CaCl2, returned 61 bbls to pit, RIH w/ 90' of 1" pipe and topped off with 75 sxs G cement w/ 2% CaCl2.