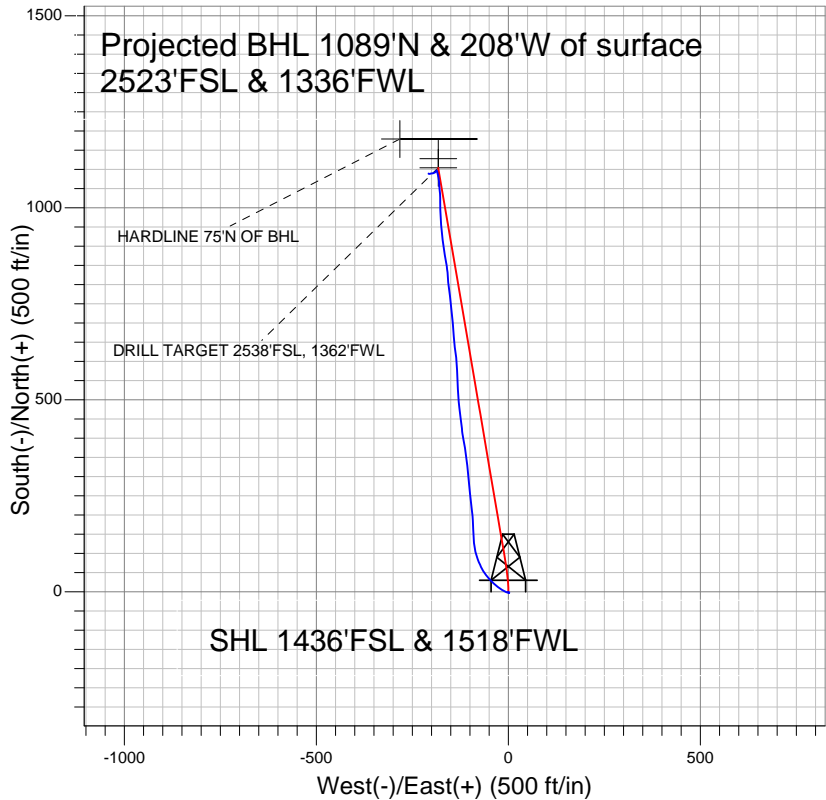


Synergy Resources



LEGEND

- ◆ SRC State 16KD, Wellbore #1, Plan #2 (6-14-10) V0
- ◇ SRC State 16LD, Wellbore #1, Plan #3 (6-14-10) V0
- Wellbore #1

Final Survey Plot

Projected Final Survey -
7590'MD & 7433'TVD @ 1109' VS
0.5 deg Inc 325.6 deg AZ

Project: SEC.16-T4N-R67W
Site: SRC-State Pad Sec.16-T4N-R67W
Well: SRC State 16KD
Plan: Wellbore #1



Directional

Synergy Resources

SEC.16-T4N-R67W

SRC-State Pad Sec.16-T4N-R67W

SRC State 16KD

Wellbore #1

Design: Wellbore #1

Standard Survey Report

22 September, 2010

Company:	Synergy Resources	Local Co-ordinate Reference:	Well SRC State 16KD
Project:	SEC.16-T4N-R67W	TVD Reference:	WELL @ 4910.0ft (Original Well Elev)
Site:	SRC-State Pad Sec.16-T4N-R67W	MD Reference:	WELL @ 4910.0ft (Original Well Elev)
Well:	SRC State 16KD	North Reference:	True
Wellbore:	Wellbore #1	Survey Calculation Method:	Minimum Curvature
Design:	Wellbore #1	Database:	Landmark

Project	SEC.16-T4N-R67W, Weld County, Colorado		
Map System:	US State Plane 1983	System Datum:	Mean Sea Level
Geo Datum:	North American Datum 1983		Using Well Reference Point
Map Zone:	Colorado Northern Zone		Using geodetic scale factor

Site		SRC-State Pad Sec.16-T4N-R67W			
Site Position:		Northing:	1,356,084.00ft	Latitude:	40° 18' 33.480 N
From:	Lat/Long	Easting:	3,167,169.55ft	Longitude:	104° 54' 2.052 W
Position Uncertainty:	0.0 ft	Slot Radius:	"	Grid Convergence:	0.39 °

Well	SRC State 16KD					
Well Position	+N/-S	0.0 ft	Northing:	1,356,162.45 ft	Latitude:	40° 18' 34.250 N
	+E/-W	0.0 ft	Easting:	3,167,242.08 ft	Longitude:	104° 54' 1.109 W
Position Uncertainty		0.0 ft	Wellhead Elevation:	ft	Ground Level:	4,897.0 ft

Wellbore	Wellbore #1				
Magnetics	Model Name	Sample Date	Declination (°)	Dip Angle (°)	Field Strength (nT)
	IGRF2010	6/14/2010	9.06	66.99	53,174

Design	Wellbore #1				
Audit Notes:					
Version:	1.0	Phase:	ACTUAL	Tie On Depth:	0.0
Vertical Section:	Depth From (TVD) (ft)	+N/-S (ft)	+E/-W (ft)	Direction (°)	
	0.0	0.0	0.0	350.62	

Survey Program		Date	6/25/2010		
From (ft)	To (ft)	Survey (Wellbore)	Tool Name	Description	
123.0	7,590.0	Survey #1 (Wellbore #1)	MWD	MWD - Standard	

Survey	Wellbore Data									
	Measured Depth (ft)	Inclination (°)	Azimuth (°)	Vertical Depth (ft)	+N/-S (ft)	+E/-W (ft)	Vertical Section (ft)	Dogleg Rate (°/100ft)	Build Rate (°/100ft)	Turn Rate (°/100ft)
Main Wellbore	0.0	0.00	0.00	0.0	0.0	0.0	0.0	0.00	0.00	0.00
	123.0	0.20	121.70	123.0	-0.1	0.2	-0.1	0.16	0.16	0.00
	214.0	0.50	159.20	214.0	-0.6	0.5	-0.6	0.40	0.33	41.21
	306.0	0.70	132.60	306.0	-1.3	1.0	-1.5	0.37	0.22	-28.91
	397.0	0.30	128.40	397.0	-1.8	1.6	-2.1	0.44	-0.44	-4.62
	490.0	0.40	106.10	490.0	-2.1	2.1	-2.4	0.18	0.11	-23.98
	571.0	0.20	150.40	571.0	-2.3	2.5	-2.7	0.36	-0.25	54.69
	616.0	0.20	150.40	616.0	-2.4	2.5	-2.8	0.00	0.00	0.00
	734.0	0.40	233.80	734.0	-2.8	2.3	-3.2	0.36	0.17	70.68
	828.0	0.40	274.40	828.0	-3.0	1.7	-3.3	0.30	0.00	43.19
	922.0	2.90	284.70	921.9	-2.4	-0.9	-2.2	2.67	2.66	10.96
	1,016.0	5.90	295.50	1,015.7	0.3	-7.6	1.5	3.30	3.19	11.49
	1,109.0	9.30	303.70	1,107.8	6.5	-18.1	9.4	3.83	3.66	8.82

Company:	Synergy Resources	Local Co-ordinate Reference:	Well SRC State 16KD
Project:	SEC.16-T4N-R67W	TVD Reference:	WELL @ 4910.0ft (Original Well Elev)
Site:	SRC-State Pad Sec.16-T4N-R67W	MD Reference:	WELL @ 4910.0ft (Original Well Elev)
Well:	SRC State 16KD	North Reference:	True
Wellbore:	Wellbore #1	Survey Calculation Method:	Minimum Curvature
Design:	Wellbore #1	Database:	Landmark

Survey										
Measured Depth (ft)	Inclination (°)	Azimuth (°)	Vertical Depth (ft)	+N/-S (ft)	+E/-W (ft)	Vertical Section (ft)	Dogleg Rate (°/100ft)	Build Rate (°/100ft)	Turn Rate (°/100ft)	
1,203.0	10.10	308.80	1,200.5	15.9	-30.9	20.7	1.25	0.85	5.43	
1,296.0	12.80	314.80	1,291.6	28.3	-44.6	35.2	3.17	2.90	6.45	
1,390.0	13.60	323.30	1,383.1	44.5	-58.6	53.4	2.23	0.85	9.04	
1,483.0	14.10	333.40	1,473.5	63.4	-70.2	74.0	2.65	0.54	10.86	
1,577.0	15.90	340.00	1,564.3	85.7	-79.7	97.6	2.64	1.91	7.02	
1,671.0	15.80	348.10	1,654.7	110.3	-86.7	123.0	2.35	-0.11	8.62	
1,764.0	16.20	356.80	1,744.1	135.7	-90.1	148.5	2.61	0.43	9.35	
1,858.0	15.10	358.10	1,834.6	161.0	-91.2	173.7	1.23	-1.17	1.38	
1,953.0	15.60	355.70	1,926.2	186.1	-92.6	198.7	0.85	0.53	-2.53	
2,046.0	17.30	354.50	2,015.4	212.4	-94.8	225.0	1.86	1.83	-1.29	
2,140.0	15.90	354.00	2,105.5	239.1	-97.5	251.8	1.50	-1.49	-0.53	
2,234.0	14.90	353.10	2,196.1	263.9	-100.3	276.7	1.09	-1.06	-0.96	
2,328.0	15.70	352.90	2,286.8	288.5	-103.4	301.5	0.85	0.85	-0.21	
2,421.0	15.30	355.30	2,376.4	313.2	-105.9	326.3	0.81	-0.43	2.58	
2,515.0	17.30	355.20	2,466.6	339.5	-108.1	352.6	2.13	2.13	-0.11	
2,609.0	18.30	350.30	2,556.1	368.0	-111.8	381.3	1.92	1.06	-5.21	
2,702.0	18.90	349.60	2,644.3	397.2	-116.9	410.9	0.69	0.65	-0.75	
2,796.0	16.00	354.70	2,733.9	425.1	-120.9	439.1	3.49	-3.09	5.43	
2,890.0	16.70	352.60	2,824.1	451.4	-123.8	465.5	0.97	0.74	-2.23	
2,983.0	17.80	352.90	2,913.0	478.7	-127.3	493.1	1.19	1.18	0.32	
3,077.0	16.30	357.20	3,002.8	506.2	-129.7	520.5	2.08	-1.60	4.57	
3,171.0	16.60	355.20	3,093.0	532.7	-131.5	547.0	0.68	0.32	-2.13	
3,265.0	16.80	358.10	3,183.0	559.7	-133.1	573.9	0.91	0.21	3.09	
3,358.0	14.90	357.60	3,272.5	585.1	-134.0	599.1	2.05	-2.04	-0.54	
3,452.0	16.60	353.50	3,362.9	610.5	-136.0	624.5	2.16	1.81	-4.36	
3,546.0	16.90	353.20	3,453.0	637.4	-139.2	651.5	0.33	0.32	-0.32	
3,640.0	16.40	355.30	3,543.0	664.2	-141.9	678.4	0.83	-0.53	2.23	
3,733.0	17.10	356.10	3,632.1	690.9	-143.9	705.1	0.79	0.75	0.86	
3,827.0	17.90	354.10	3,721.7	719.1	-146.3	733.3	1.06	0.85	-2.13	
3,921.0	19.00	353.60	3,810.9	748.6	-149.5	763.0	1.18	1.17	-0.53	
4,014.0	18.60	352.70	3,898.9	778.4	-153.1	792.9	0.53	-0.43	-0.97	
4,108.0	16.10	354.40	3,988.6	806.2	-156.2	820.9	2.71	-2.66	1.81	
4,202.0	15.30	355.60	4,079.1	831.6	-158.5	846.3	0.92	-0.85	1.28	
4,296.0	17.50	350.60	4,169.3	857.9	-161.7	872.8	2.78	2.34	-5.32	
4,389.0	18.00	350.40	4,257.9	885.8	-166.4	901.1	0.54	0.54	-0.22	
4,483.0	18.50	352.80	4,347.2	915.0	-170.7	930.5	0.96	0.53	2.55	
4,576.0	17.80	354.80	4,435.5	943.8	-173.8	959.5	1.01	-0.75	2.15	
4,671.0	14.90	357.10	4,526.7	970.4	-175.8	986.1	3.13	-3.05	2.42	
4,765.0	13.50	357.00	4,617.8	993.5	-177.0	1,009.0	1.49	-1.49	-0.11	
4,859.0	13.50	0.40	4,709.2	1,015.4	-177.5	1,030.7	0.84	0.00	3.62	
4,952.0	12.80	356.20	4,799.8	1,036.5	-178.1	1,051.7	1.27	-0.75	-4.52	
5,046.0	10.50	355.60	4,891.8	1,055.4	-179.4	1,070.6	2.45	-2.45	-0.64	
5,140.0	7.40	354.60	4,984.7	1,070.0	-180.6	1,085.2	3.30	-3.30	-1.06	
5,234.0	5.90	351.00	5,078.0	1,080.8	-182.0	1,096.0	1.66	-1.60	-3.83	
5,327.0	4.40	344.30	5,170.7	1,089.0	-183.7	1,104.3	1.74	-1.61	-7.20	
5,358.7	3.93	344.33	5,202.3	1,091.2	-184.3	1,106.6	1.49	-1.49	0.08	
PERMIT TARGET BHL 2562'FSL, 1362'FWL										
5,421.0	3.00	344.40	5,264.5	1,094.8	-185.3	1,110.4	1.49	-1.49	0.12	
5,515.0	1.10	275.20	5,358.4	1,097.3	-186.9	1,113.0	2.98	-2.02	-73.62	
5,609.0	0.60	214.70	5,452.4	1,096.9	-188.0	1,112.9	1.02	-0.53	-64.36	
5,656.5	0.65	210.52	5,499.9	1,096.5	-188.3	1,112.5	0.14	0.10	-8.81	
DRILL TARGET 2538'FSL, 1362'FWL										
5,797.0	0.80	201.20	5,640.4	1,094.9	-189.1	1,111.1	0.14	0.11	-6.63	
5,984.0	0.70	225.40	5,827.4	1,092.9	-190.4	1,109.3	0.18	-0.05	12.94	

Company:	Synergy Resources	Local Co-ordinate Reference:	Well SRC State 16KD
Project:	SEC.16-T4N-R67W	TVD Reference:	WELL @ 4910.0ft (Original Well Elev)
Site:	SRC-State Pad Sec.16-T4N-R67W	MD Reference:	WELL @ 4910.0ft (Original Well Elev)
Well:	SRC State 16KD	North Reference:	True
Wellbore:	Wellbore #1	Survey Calculation Method:	Minimum Curvature
Design:	Wellbore #1	Database:	Landmark

Survey										
Measured Depth (ft)	Inclination (°)	Azimuth (°)	Vertical Depth (ft)	+N/-S (ft)	+E/-W (ft)	Vertical Section (ft)	Dogleg Rate (°/100ft)	Build Rate (°/100ft)	Turn Rate (°/100ft)	
6,172.0	0.60	242.10	6,015.4	1,091.6	-192.1	1,108.3	0.11	-0.05	8.88	
6,360.0	1.00	252.60	6,203.3	1,090.7	-194.5	1,107.8	0.23	0.21	5.59	
6,546.0	0.70	254.40	6,389.3	1,089.9	-197.1	1,107.4	0.16	-0.16	0.97	
6,734.0	0.70	269.70	6,577.3	1,089.6	-199.4	1,107.5	0.10	0.00	8.14	
6,922.0	0.70	254.80	6,765.3	1,089.3	-201.6	1,107.6	0.10	0.00	-7.93	
7,109.0	0.70	260.00	6,952.3	1,088.8	-203.9	1,107.4	0.03	0.00	2.78	
7,297.0	0.60	268.60	7,140.3	1,088.5	-206.0	1,107.6	0.07	-0.05	4.57	
7,484.0	0.40	297.00	7,327.3	1,088.8	-207.6	1,108.1	0.17	-0.11	15.19	
7,542.0	0.50	325.60	7,385.3	1,089.1	-207.9	1,108.4	0.42	0.17	49.31	
7,590.0	0.50	325.60	7,433.3	1,089.5	-208.1	1,108.8	0.00	0.00	0.00	
HARDLINE 75'N OF BHL										

Checked By: _____	Approved By: _____	Date: _____
-------------------	--------------------	-------------