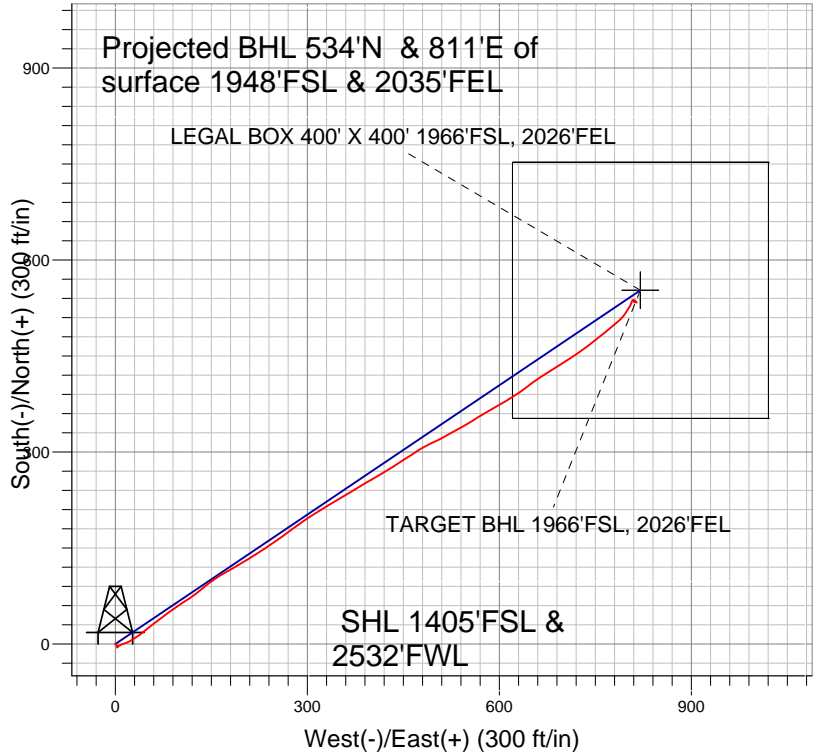
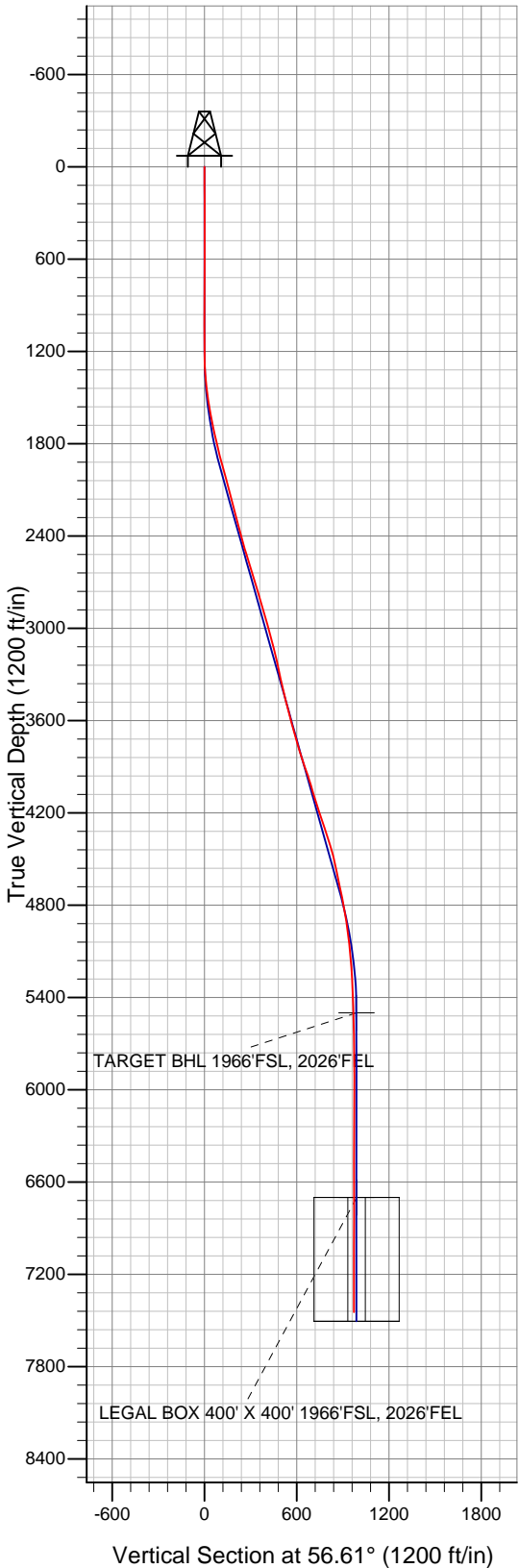


## Synergy Resources



### LEGEND

- ✕ SRC State 33-16D, Wellbore #1, Plan #1 (10-16-09) V0
- Survey #1

## Final Survey Plot

Projected Final Survey -  
 7570'MD & 7446'TVD @ 971' VS .2  
 deg Inc 129.0 deg AZ

Project: SEC.16-T4N-R67W  
 Site: SRC State 33-16D Pad Sec.16-T4N-R67W  
 Well: SRC State 33-16D  
 Plan: Wellbore #1



## **Synergy Resources**

**SEC.16-T4N-R67W**

**SRC State 33-16D Pad Sec.16-T4N-R67W**

**SRC State 33-16D**

**Wellbore #1**

**Survey: Survey #1**

## **Standard Survey Report**

**29 June, 2010**

Survey									
Measured Depth (ft)	Inclination (°)	Azimuth (°)	Vertical Depth (ft)	+N/-S (ft)	+E/-W (ft)	Vertical Section (ft)	Dogleg Rate (°/100ft)	Build Rate (°/100ft)	Turn Rate (°/100ft)
0.0	0.00	0.00	0.0	0.0	0.0	0.0	0.00	0.00	0.00
123.0	0.70	145.30	123.0	-0.6	0.4	-0.6	0.57	0.57	0.00
214.0	0.60	118.60	214.0	-1.3	1.2	-1.3	0.35	-0.11	-29.34
306.0	0.30	155.30	306.0	-1.8	1.7	-1.8	0.44	-0.33	39.89
397.0	0.60	124.90	397.0	-2.2	2.2	-2.2	0.41	0.33	-33.41
490.0	0.70	134.80	490.0	-2.9	3.0	-2.9	0.16	0.11	10.65
582.0	0.60	184.10	582.0	-3.8	3.3	-3.8	0.60	-0.11	53.59
659.0	0.50	157.50	659.0	-4.5	3.4	-4.5	0.35	-0.13	-34.55
767.0	0.40	251.30	767.0	-5.1	3.3	-5.1	0.61	-0.09	86.85
860.0	0.20	279.70	860.0	-5.1	2.8	-5.1	0.26	-0.22	30.54
954.0	0.10	78.40	954.0	-5.1	2.7	-5.1	0.31	-0.11	168.83
1,048.0	0.20	177.80	1,048.0	-5.2	2.8	-5.2	0.25	0.11	105.74
1,142.0	0.40	190.60	1,142.0	-5.7	2.7	-5.7	0.22	0.21	13.62

<b>Company:</b>	Synergy Resources	<b>Local Co-ordinate Reference:</b>	Well SRC State 33-16D
<b>Project:</b>	SEC.16-T4N-R67W	<b>TVD Reference:</b>	WELL @ 4921.0ft (Original Well Elev)
<b>Site:</b>	SRC State 33-16D Pad Sec.16-T4N-R67W	<b>MD Reference:</b>	WELL @ 4921.0ft (Original Well Elev)
<b>Well:</b>	SRC State 33-16D	<b>North Reference:</b>	True
<b>Wellbore:</b>	Wellbore #1	<b>Survey Calculation Method:</b>	Minimum Curvature
<b>Design:</b>	Wellbore #1	<b>Database:</b>	Landmark

Survey										
Measured Depth (ft)	Inclination (°)	Azimuth (°)	Vertical Depth (ft)	+N/-S (ft)	+E/-W (ft)	Vertical Section (ft)	Dogleg Rate (°/100ft)	Build Rate (°/100ft)	Turn Rate (°/100ft)	
1,235.0	1.90	24.30	1,235.0	-4.6	3.3	-4.6	2.46	1.61	-178.82	
1,328.0	3.30	67.90	1,327.9	-2.2	6.4	-2.2	2.50	1.51	46.88	
1,422.0	6.50	71.10	1,421.5	0.5	14.0	0.5	3.42	3.40	3.40	
1,512.0	8.80	59.70	1,510.7	5.6	24.7	5.6	3.05	2.56	-12.67	
1,606.0	10.30	54.50	1,603.4	14.1	37.8	14.1	1.84	1.60	-5.53	
1,700.0	12.00	50.40	1,695.6	25.3	52.2	25.3	1.99	1.81	-4.36	
1,793.0	13.10	51.90	1,786.4	37.9	67.9	37.9	1.23	1.18	1.61	
1,887.0	14.00	54.60	1,877.8	51.1	85.6	51.1	1.17	0.96	2.87	
1,981.0	15.70	58.20	1,968.6	64.4	105.6	64.4	2.06	1.81	3.83	
2,075.0	15.60	51.20	2,059.2	79.0	126.3	79.0	2.01	-0.11	-7.45	
2,169.0	14.40	51.60	2,150.0	94.2	145.3	94.2	1.28	-1.28	0.43	
2,263.0	14.30	58.70	2,241.0	107.5	164.4	107.5	1.87	-0.11	7.55	
2,356.0	15.50	61.70	2,330.9	119.3	185.2	119.3	1.53	1.29	3.23	
2,450.0	14.80	57.40	2,421.6	131.7	206.3	131.7	1.41	-0.74	-4.57	
2,544.0	17.40	57.00	2,512.0	145.9	228.2	145.9	2.77	2.77	-0.43	
2,637.0	17.60	55.20	2,600.6	161.5	251.4	161.5	0.62	0.22	-1.94	
2,731.0	16.70	53.40	2,690.5	177.6	274.0	177.6	1.11	-0.96	-1.91	
2,825.0	15.60	55.90	2,780.8	192.8	295.3	192.8	1.38	-1.17	2.66	
2,918.0	16.90	57.60	2,870.0	207.0	317.0	207.0	1.49	1.40	1.83	
3,012.0	15.60	59.50	2,960.3	220.8	339.5	220.8	1.49	-1.38	2.02	
3,106.0	15.30	59.90	3,050.9	233.4	361.1	233.4	0.34	-0.32	0.43	
3,199.0	14.00	57.50	3,140.9	245.6	381.2	245.6	1.54	-1.40	-2.58	
3,293.0	12.10	61.90	3,232.4	256.3	399.5	256.3	2.28	-2.02	4.68	
3,387.0	12.30	58.50	3,324.3	266.2	416.7	266.2	0.79	0.21	-3.62	
3,481.0	13.10	58.30	3,416.0	277.0	434.3	277.0	0.85	0.85	-0.21	
3,575.0	15.50	56.20	3,507.1	289.6	453.8	289.6	2.61	2.55	-2.23	
3,669.0	14.20	57.60	3,598.0	302.8	474.0	302.8	1.43	-1.38	1.49	
3,762.0	15.30	65.50	3,687.9	314.0	494.8	314.0	2.46	1.18	8.49	
3,856.0	17.30	60.60	3,778.1	326.0	518.2	326.0	2.58	2.13	-5.21	
3,950.0	18.80	61.00	3,867.5	340.2	543.7	340.2	1.60	1.60	0.43	
4,043.0	18.80	57.00	3,955.5	355.6	569.3	355.6	1.39	0.00	-4.30	
4,137.0	17.30	61.90	4,044.9	370.5	594.4	370.5	2.27	-1.60	5.21	
4,231.0	16.50	57.70	4,134.8	384.2	618.0	384.2	1.55	-0.85	-4.47	
4,325.0	18.30	52.60	4,224.5	400.3	641.0	400.3	2.51	1.91	-5.43	
4,418.0	19.20	57.20	4,312.6	417.4	665.5	417.4	1.86	0.97	4.95	
4,512.0	16.90	57.60	4,402.0	433.1	690.0	433.1	2.45	-2.45	0.43	
4,605.0	13.80	57.40	4,491.7	446.4	710.7	446.4	3.33	-3.33	-0.22	
4,700.0	12.00	53.80	4,584.3	458.3	728.3	458.3	2.07	-1.89	-3.79	
4,794.0	11.60	53.30	4,676.3	469.7	743.7	469.7	0.44	-0.43	-0.53	
4,888.0	11.50	49.50	4,768.4	481.5	758.4	481.5	0.82	-0.11	-4.04	
4,981.0	9.60	51.70	4,859.8	492.3	771.6	492.3	2.09	-2.04	2.37	
5,075.0	7.70	49.60	4,952.7	501.2	782.5	501.2	2.05	-2.02	-2.23	
5,169.0	6.40	43.90	5,046.0	509.1	790.9	509.1	1.57	-1.38	-6.06	
5,263.0	5.20	30.80	5,139.5	516.5	796.8	516.5	1.89	-1.28	-13.94	
5,356.0	4.60	32.30	5,232.2	523.3	800.9	523.3	0.66	-0.65	1.61	
5,450.0	3.30	31.00	5,326.0	528.8	804.3	528.8	1.39	-1.38	-1.38	
5,544.0	2.20	17.40	5,419.9	532.8	806.2	532.8	1.35	-1.17	-14.47	
5,624.9	1.94	19.34	5,500.7	535.6	807.2	535.6	0.33	-0.32	2.39	
TARGET BHL 1966'FSL, 2026'FEL										
5,638.0	1.90	19.70	5,513.8	536.0	807.3	536.0	0.33	-0.32	2.77	
5,732.0	2.50	98.60	5,607.7	537.2	809.9	537.2	3.01	0.64	83.94	
5,826.0	0.50	178.20	5,701.7	536.5	811.9	536.5	2.62	-2.13	84.68	
6,013.0	0.60	153.60	5,888.7	534.8	812.4	534.8	0.14	0.05	-13.16	
6,201.0	0.50	114.80	6,076.7	533.5	813.5	533.5	0.20	-0.05	-20.64	

<b>Company:</b>	Synergy Resources	<b>Local Co-ordinate Reference:</b>	Well SRC State 33-16D
<b>Project:</b>	SEC.16-T4N-R67W	<b>TVD Reference:</b>	WELL @ 4921.0ft (Original Well Elev)
<b>Site:</b>	SRC State 33-16D Pad Sec.16-T4N-R67W	<b>MD Reference:</b>	WELL @ 4921.0ft (Original Well Elev)
<b>Well:</b>	SRC State 33-16D	<b>North Reference:</b>	True
<b>Wellbore:</b>	Wellbore #1	<b>Survey Calculation Method:</b>	Minimum Curvature
<b>Design:</b>	Wellbore #1	<b>Database:</b>	Landmark

Survey									
Measured Depth (ft)	Inclination (°)	Azimuth (°)	Vertical Depth (ft)	+N/-S (ft)	+E/-W (ft)	Vertical Section (ft)	Dogleg Rate (°/100ft)	Build Rate (°/100ft)	Turn Rate (°/100ft)
6,388.0	0.10	158.40	6,263.7	533.1	814.4	533.1	0.23	-0.21	23.32
6,575.0	0.40	344.30	6,450.7	533.5	814.2	533.5	0.27	0.16	-93.10
6,763.0	0.30	306.40	6,638.7	534.5	813.7	534.5	0.13	-0.05	-20.16
6,824.3	0.30	285.28	6,700.0	534.6	813.4	534.6	0.18	-0.01	-34.47
LEGAL BOX 400' X 400' 1966'FSL, 2026'FEL									
6,951.0	0.40	251.30	6,826.7	534.5	812.6	534.5	0.18	0.08	-26.81
7,138.0	0.30	273.70	7,013.7	534.4	811.5	534.4	0.09	-0.05	11.98
7,326.0	0.20	302.70	7,201.7	534.6	810.8	534.6	0.08	-0.05	15.43
7,524.0	0.20	129.00	7,399.7	534.5	810.7	534.5	0.20	0.00	-87.73
7,570.0	0.20	129.00	7,445.7	534.4	810.9	534.4	0.00	0.00	0.00

Checked By: _____	Approved By: _____	Date: _____
-------------------	--------------------	-------------