

**HALLIBURTON**

**CHEVRON - MID-CONTINENT EBIZ  
11111 S WILCREST DR - DO NOT MAIL  
HOUSTON, Texas**

SKR 598-36-AV-13

H&P 318

## **Post Job Summary**

# **Cement Production Casing**

Prepared for: Brent Swank  
Date Prepared: 10/12/2008  
Version: 1

Service Supervisor: MOORE, ALEX

Submitted by:

**HALLIBURTON**

## The Road to Excellence Starts with Safety

Sold To #: 338668		Ship To #: 2666603		Quote #:		Sales Order #: 6226731	
Customer: CHEVRON - MID-CONTINENT EBIZ				Customer Rep: Brent Swank			
Well Name: SKR				Well #: 598-36-AV-13		API/UWI #:	
Field: SKINNER RIDGE		City (SAP): PARACHUTE		County/Parish: Garfield		State: Colorado	
Contractor: H&P 318				Rig/Platform Name/Num: 318			
Job Purpose: Cement Production Casing							
Well Type: Development Well				Job Type: Cement Production Casing			
Sales Person: HARTLEY, RICHARD				Srvc Supervisor: MOORE, ALEX		MBU ID Emp #: 158427	
<b>Job Personnel</b>							
HES Emp Name	Exp Hrs	Emp #	HES Emp Name	Exp Hrs	Emp #	HES Emp Name	Exp Hrs
CHRISTOFFERSON, JUSTIN Wayne	9	435308	CUSTER, JASON Richard	9	414714	KUKUS, CHRISTOPHER A	9
MOORE, ALEX Vincent	9	158427	NEWBERRY, ERIC Lee	9	446068		
<b>Equipment</b>							
HES Unit #	Distance-1 way	HES Unit #	Distance-1 way	HES Unit #	Distance-1 way	HES Unit #	Distance-1 way
10237715	120 mile	10638378	120 mile	10857016	120 mile	10867322	120 mile
10872113	120 mile	10998512	120 mile				
<b>Job Hours</b>							
Date	On Location Hours	Operating Hours	Date	On Location Hours	Operating Hours	Date	On Location Hours
10/12/2008	8	2					
<b>TOTAL</b>		<b>8</b>	<b>2</b>	Total is the sum of each column separately			
<b>Job</b>				<b>Job Times</b>			
Formation Name				Date	Time	Time Zone	
Formation Depth (MD) Top	Bottom			Called Out	11 - Oct - 2008	21:30	MST
Form Type	BHST			On Location	12 - Oct - 2008	01:30	MST
Job depth MD	6707. ft			Job Started	12 - Oct - 2008	06:51	MST
Water Depth	Wk Ht Above Floor			Job Completed	12 - Oct - 2008	08:29	MST
Perforation Depth (MD) From	To			Departed Loc	12 - Oct - 2008	10:30	MST
<b>Well Data</b>							
Description	New / Used	Max pressure psig	Size in	ID in	Weight lbm/ft	Thread	Grade
7 7/8 Open Hole				7.875			
4.5 Production Casing	Unknown		4.5	4.	11.6		
<b>Sales/Rental/3<sup>rd</sup> Party (HES)</b>							
Description	Qty	Qty uom	Depth	Supplier			
PLUG,CMTG,TOP,4 1/2,HWE,3.65 MIN/4.14 MA	1	EA					
PORT. DAS W/CEMWIN;ACQUIRE W/HES, ZI	1	JOB					
ADC (AUTO DENSITY CTRL) SYS, /JOB,ZI	1	JOB					
<b>Tools and Accessories</b>							
Type	Size	Qty	Make	Depth	Type	Size	Qty
Guide Shoe					Packer		
Float Shoe					Bridge Plug		
Float Collar					Retainer		
Insert Float							
Stage Tool							
<b>Miscellaneous Materials</b>							
Gelling Agt		Conc		Surfactant		Conc	
Treatment Fld		Conc		Inhibitor		Conc	
				Acid Type		Qty	
				Sand Type		Size	
						Conc	%
						Qty	



Fluid Data										
Stage/Plug #: 1										
Fluid #	Stage Type	Fluid Name	Qty	Qty uom	Mixing Density lbm/gal	Yield ft <sup>3</sup> /sk	Mix Fluid Gal/sk	Rate bbl/min	Total Mix Fluid Gal/sk	
1	Polyflake and Dyed Spacer		50.0	bbl	.	.0	.0	2 1/4/8		
2	Lead Cement	EXTENDACEM (TM) SYSTEM (452981)	425.0	sacks	12.8	1.55	7.15		7.67	
		7.674 Gal FRESH WATER								
3	Tail Cement	EXTENDACEM (TM) SYSTEM (452981)	600.0	sacks	13.2	1.43	6.19		7.0	
4	KCL Displacement		103.3	bbl	.	.0	.0	6		
Calculated Values			Pressures			Volumes				
Displacement	103.3	Shut In: Instant		Lost Returns	no	Cement Slurry	270	Pad		
Top Of Cement	surface	5 Min		Cement Returns	no	Actual Displacement	103.3	Treatment		
Frac Gradient		15 Min		Spacers	50	Load and Breakdown		Total Job	423.4	
Rates										
Circulating	8	Mixing	6	Displacement	6	Avg. Job	6			
Cement Left In Pipe	Amount	44.8 ft	Reason	Shoe Joint						
Frac Ring # 1 @	ID	Frac ring # 2 @	ID	Frac Ring # 3 @	ID	Frac Ring # 4 @	ID			
The Information Stated Herein Is Correct				Customer Representative Signature						

*The Road to Excellence Starts with Safety*

Sold To #: 338668	Ship To #: 2666603	Quote #:	Sales Order #: 6226731
Customer: CHEVRON - MID-CONTINENT EBIZ	Customer Rep: Brent Swank		
Well Name: SKR	Well #: 598-36-AV-13	API/UWI #:	
Field: SKINNER RIDGE	City (SAP): PARACHUTE	County/Parish: Garfield	State: Colorado
Legal Description:			
Lat: N 0 deg. OR N 0 deg. 0 min. 0 secs.	Long: E 0 deg. OR E 0 deg. 0 min. 0 secs.		
Contractor: H&P 318	Rig/Platform Name/Num: 318		
Job Purpose: Cement Production Casing	Ticket Amount:		
Well Type: Development Well	Job Type: Cement Production Casing		
Sales Person: HARTLEY, RICHARD	Srvs Supervisor: MOORE, ALEX	MBU ID Emp #: 158427	

Activity Description	Date/Time	Cht #	Rate bbl/ min	Volume bbl		Pressure psig		Comments
				Stage	Total	Tubing	Casing	
Arrive at Location from Service Center	10/12/2008 01:30							1 PICKUP - ELITE 10 - 1 660 - 1 silo
Assessment Of Location Safety Meeting	10/12/2008 01:40							TD 6742 - TP6707 - SJ 44.8 - MW 10.4 - Hole 7 7/8
Rig-Up Equipment	10/12/2008 02:00							
Pre-Job Safety Meeting	10/12/2008 05:30							
Prime Pumps	10/12/2008 06:52		2	2			300.0	Fresh water
Test Lines	10/12/2008 06:54						4000.	
Pump Spacer 1	10/12/2008 06:56		4	50			500.0	Fresh water with poly flake
Pump Lead Cement	10/12/2008 07:13		8	117.3			1200.	425 sks Extendacem - 12.8 ppg - 1.55 cuft/sk - 7.15 mix H2O
Pump Tail Cement	10/12/2008 07:33		5	152.8			400.0	600 sks Extendacem - 13.2 ppg - 1.43 cuft/sk - 6.19 mix H2O
Shutdown	10/12/2008 08:00							
Clean Lines	10/12/2008 08:01							
Drop Top Plug	10/12/2008 08:05							
Pump Displacement	10/12/2008 08:06		8	93			1600.	Fresh water with KCL
Slow Rate	10/12/2008 08:17		2	10			1500.	

# Cementing Job Log

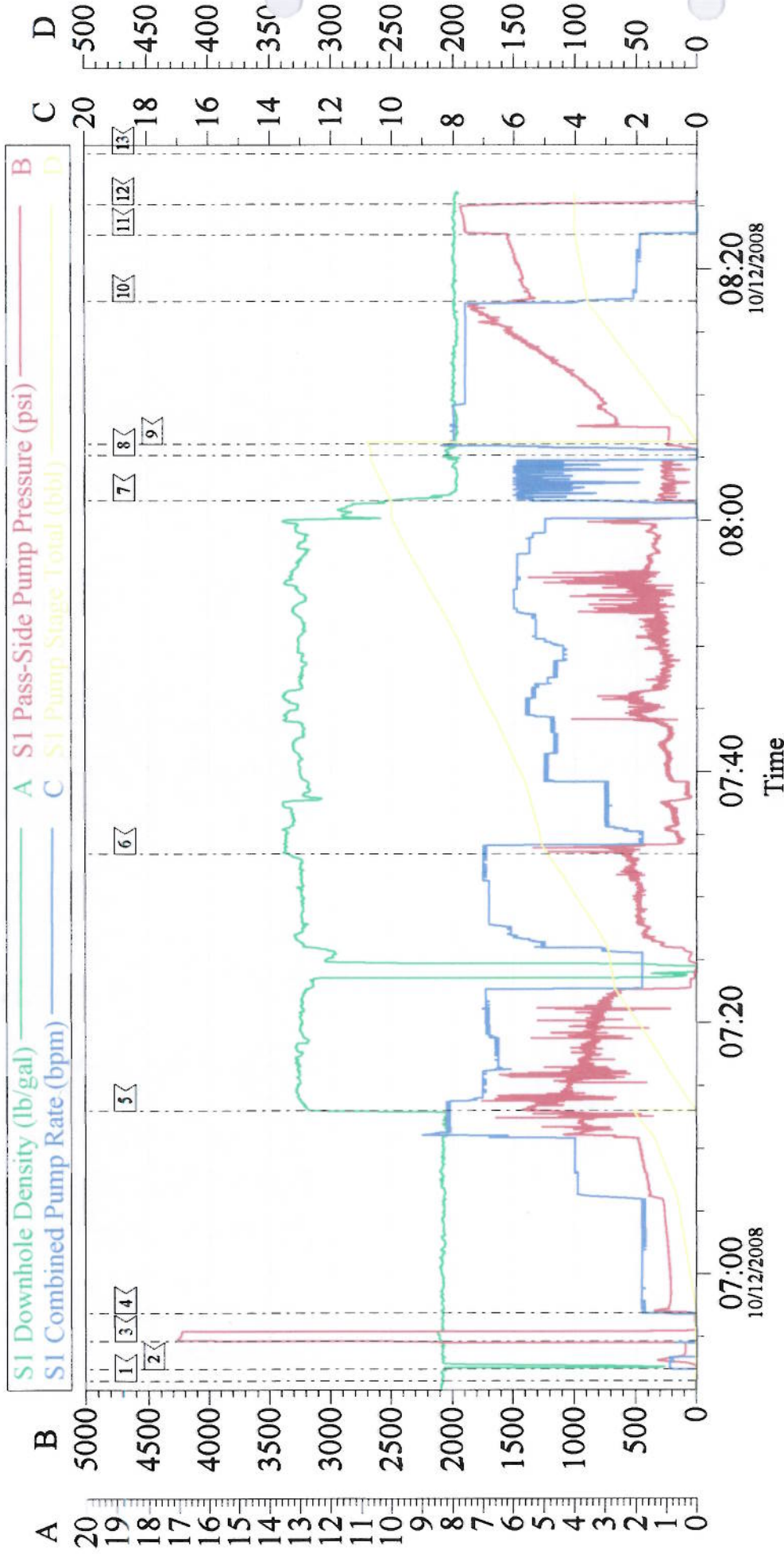
Activity Description	Date/Time	Cht #	Rate bbl/min	Volume bbl		Pressure psig		Comments
				Stage	Total	Tubing	Casing	
Bump Plug	10/12/2008 08:22						2000.0	Plug landed at calculated displacement - had good returns <sup>30</sup> through job - 40 bbls spacer returned to surface
Check Floats	10/12/2008 08:25							Floats held
Comment	10/12/2008 08:26							Pipe remained stationary through job
Comment	10/12/2008 08:27							Thank you for using Halliburton Grand Junction, Alex Moore and crew

Cuevion  
4 1/2 Production



# Chevron

## 4 1/2 Production



Customer: Chevron	Job Date: 12-Oct-2008	Sales Order #: 6226731
Well Description: SKR 598-36-AV-13	Job Type: 4 1/2 production	ADC Used: Yes
Company Rep: Brent Swank	Cement Supervisor: Alex Moore	Elite #: 10 Justin Christofferson