
CHEVRON - MID-CONTINENT EBIZ

**SKR 598-36-AV-13
PICEANCE
Garfield County , Colorado**

Cement Surface Casing

11-Sep-2008

Job Site Documents

The Road to Excellence Starts with Safety

Sold To #: 338668	Ship To #: 2666603	Quote #:	Sales Order #: 5917696
Customer: CHEVRON - MID-CONTINENT EBIZ	Customer Rep: MEIER, DAN		
Well Name: SKR	Well #: 598-36-AV-13	API/UWI #:	
Field: PICEANCE	City (SAP): PARACHUTE	County/Parish: Garfield	State: Colorado
Contractor: CHEVRON	Rig/Platform Name/Num: H&P 318		
Job Purpose: Cement Surface Casing			
Well Type: Development Well	Job Type: Cement Surface Casing		
Sales Person: HARTLEY, RICHARD	Srv Supervisor: HAYES, DIRK	MBU ID Emp #: 336768	

Job Personnel

HES Emp Name	Exp Hrs	Emp #	HES Emp Name	Exp Hrs	Emp #	HES Emp Name	Exp Hrs	Emp #
EDWARDS, RICHARD Delbert	6.0	380448	HAYES, DIRK A	6.0	336768	LITTLE, FRANK	6.0	448361
MUHLESTEIN, RYAN	6.0	453609	SHAHNOOSHI, ALIREZA Faroooshani	6.0	391960			

Equipment

HES Unit #	Distance-1 way	HES Unit #	Distance-1 way	HES Unit #	Distance-1 way	HES Unit #	Distance-1 way
10616651C	120 mile	10719775	120 mile	10973565	120 mile		

Job Hours

Date	On Location Hours	Operating Hours	Date	On Location Hours	Operating Hours	Date	On Location Hours	Operating Hours
09-11-08	6	2						

TOTAL Total is the sum of each column separately

Job

Formation Name	Formation Depth (MD)	Top	Bottom	Form Type	Job depth MD	Job Depth TVD	Wk Ht Above Floor	Perforation Depth (MD)	From	To	Job Times	Date	Time	Time Zone
				BHST	1575. ft	1575. ft	5. ft				Called Out	11 - Sep - 2008	14:00	MST
											On Location	11 - Sep - 2008	18:00	MST
											Job Started	11 - Sep - 2008	22:24	MST
											Job Completed	11 - Sep - 2008	23:21	MST
											Departed Loc	12 - Sep - 2008	01:30	MST

Well Data

Description	New / Used	Max pressure psig	Size in	ID in	Weight lbm/ft	Thread	Grade	Top MD ft	Bottom MD ft	Top TVD ft	Bottom TVD ft
OPEN HOLE				12.25					1575.		
SURFACE CASING	New		8.625	8.097	24.		J-55		1566.08.		

Sales/Rental/3rd Party (HES)

Description	Qty	Qty uom	Depth	Supplier
PLUG,CMTG,TOP,8 5/8,HWE,7.20 MIN/8.09 MA	1	EA		

Tools and Accessories

Type	Size	Qty	Make	Depth	Type	Size	Qty	Make	Depth	Type	Size	Qty	Make
Guide Shoe					Packer					Top Plug		1	
Float Shoe					Bridge Plug					Bottom Plug			
Float Collar					Retainer					SSR plug set			
Insert Float										Plug Container		1	
Stage Tool										Centralizers			

Miscellaneous Materials

Gelling Agt	Conc	Surfactant	Conc	Acid Type	Qty	Conc	%
Treatment Fld	Conc	Inhibitor	Conc	Sand Type	Size		Qty

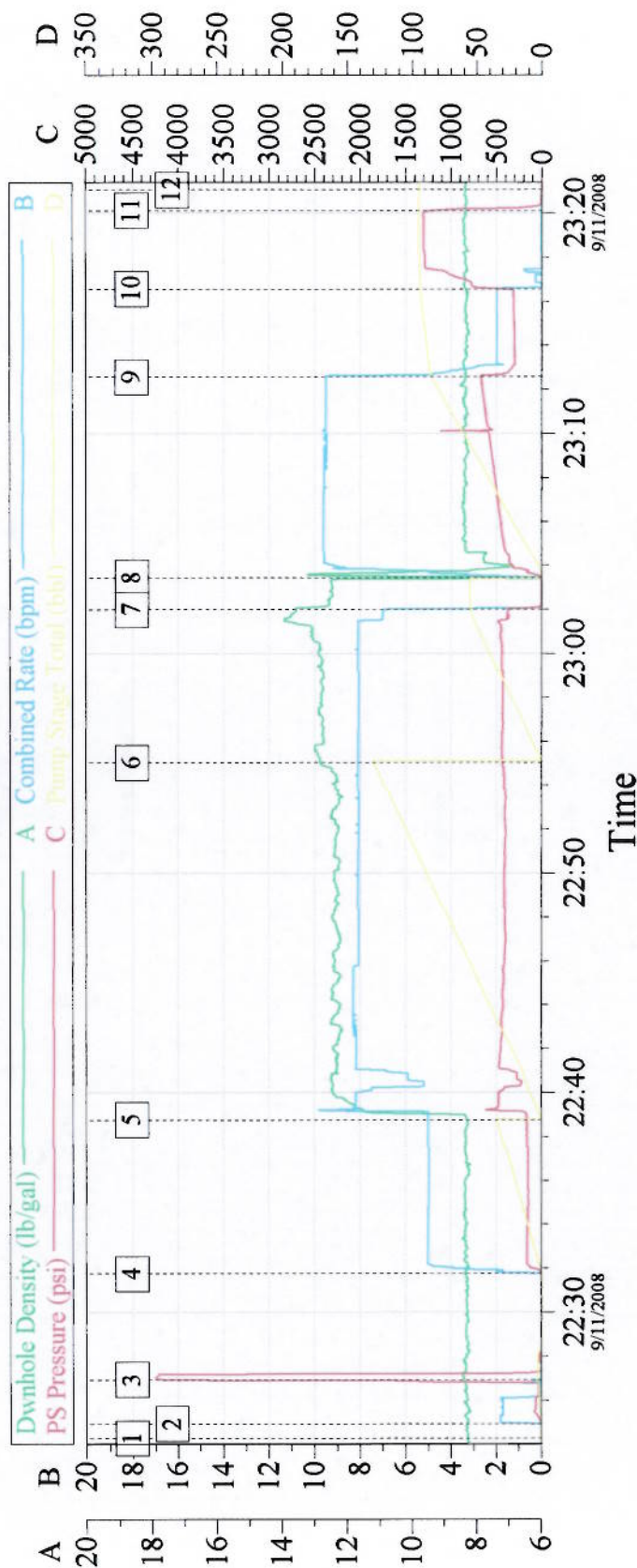
Fluid Data									
Stage/Plug #: 1									
Fluid #	Stage Type	Fluid Name	Qty	Qty uom	Mixing Density lbm/gal	Yield ft ³ /sk	Mix Fluid Gal/sk	Rate bbl/min	Total Mix Fluid Gal/sk
1	DYED AND POLYFLAKE SPACER		20.0	bbl	8.33	.0	.0	.0	
2	Lead Cement	VERSACEM (TM) SYSTEM (452010)	307.0	sacks	12.3	2.38	13.75		
	2 %	CAL-SEAL 60, 50 LB BAG (101217146)							
	2 %	ECONOLITE (100001580)							
	0.3 %	VERSASET, 55 LB SK (101376573)							
	5.64 lbm	SALT, 100 LB BAG (100003652)							
	0.125 lbm	POLY-E-FLAKE (101216940)							
	0.25 %	D-AIR 3000 (101007446)							
	13.75 Gal	FRESH WATER							
3	Tail Cement	VERSACEM (TM) SYSTEM (452010)	164.0	sacks	12.8	2.11	11.75		
	2 %	CAL-SEAL 60, 50 LB BAG (101217146)							
	2 %	ECONOLITE (100001580)							
	0.3 %	VERSASET, 55 LB SK (101376573)							
	5.64 lbm	SALT, 100 LB BAG (100003652)							
	11.75 Gal	FRESH WATER							
4	H2O DISPLACEMENT		96.9	bbl	8.33	.0	.0	.0	
Calculated Values		Pressures		Volumes					
Displacement	96.9	Shut In: Instant		Lost Returns	NO	Cement Slurry	190	Pad	
Top Of Cement	SURFACE	5 Min		Cement Returns	46	Actual Displacement	94.5	Treatment	
Frac Gradient		15 Min		Spacers	30	Load and Breakdown		Total Job	
Rates									
Circulating		Mixing	7.8	Displacement	9.5	Avg. Job	8.5		
Cement Left In Pipe	Amount	42 ft	Reason	Shoe Joint					
Frac Ring # 1 @	ID	Frac ring # 2 @	ID	Frac Ring # 3 @	ID	Frac Ring # 4 @	ID		
The Information Stated Herein Is Correct				Customer Representative Signature					

The Road to Excellence Starts with Safety

Sold To #: 338668	Ship To #: 2666603	Quote #:	Sales Order #: 5917696
Customer: CHEVRON - MID-CONTINENT EBIZ	Customer Rep: MEIER, DAN		
Well Name: SKR	Well #: 598-36-AV-13	API/UWI #:	
Field: PICEANCE	City (SAP): PARACHUTE	County/Parish: Garfield	State: Colorado
Legal Description:			
Lat: N 0 deg. OR N 0 deg. 0 min. 0 secs.	Long: E 0 deg. OR E 0 deg. 0 min. 0 secs.		
Contractor: CHEVRON	Rig/Platform Name/Num: H&P 318		
Job Purpose: Cement Surface Casing	Ticket Amount:		
Well Type: Development Well	Job Type: Cement Surface Casing		
Sales Person: HARTLEY, RICHARD	Srvc Supervisor: HAYES, DIRK	MBU ID Emp #: 336768	

Activity Description	Date/Time	Cht #	Rate bbl/ min	Volume bbl		Pressure psig		Comments
				Stage	Total	Tubing	Casing	
Call Out	09/11/2008 12:00							
Crew Leave Yard	09/11/2008 14:00							
Arrive at Location from Service Center	09/11/2008 18:00							
Assessment Of Location Safety Meeting	09/11/2008 18:25							
Safety Meeting - Pre Rig-Up	09/11/2008 22:00							
Safety Meeting - Pre Job	09/11/2008 22:15							
Start Job	09/11/2008 22:24							TD 1575, TP 1564.57, SHOE 40.86, MUD 9.2
Prime Pumps	09/11/2008 22:25		2		2	81.0		PUMP 2 BBLS AHEAD TO PRIME LINES
Test Lines	09/11/2008 22:26		0.5		0.5	3000.0		
Pump Spacer	09/11/2008 22:31		8		30	159.0		PUMP 30 BBLS OF FRESH H2O WITH THE LAST 20 BBLS OF SPACER WE PUMPED POLYFLAKE
Pump Lead Cement	09/11/2008 22:38		7.8		130.1	428.0		307 SKS @ 12.3 YIELD 2.38 W/R 13.75
Pump Tail Cement	09/11/2008 22:55		7.8		58	421.0		164 SKS @ 12.8 YIELD 2.11 W/R 11.75
Shutdown	09/11/2008 23:02							
Drop Top Plug	09/11/2008 23:03							
Pump Displacement	09/11/2008 23:04		9.5		96.9	640.0		PUMP FRESH H2O FOR DISPLACEMENT

8 5/8" SURFACE



Event Log

1	start job	22:24:17	2	pump 2 bbls ahead to prime lines	22:24:56
3	test lines	22:26:57	4	pump fresh h2o spacer / polyflake	22:31:45
5	pump lead cement	22:38:46	6	pump tail cement	22:55:02
7	shut down / drop top plug	23:02:00	8	pump displacement	23:03:27
9	slow rate	23:12:34	10	bump top plug	23:16:34
11	check floats	23:20:07	12	end job	23:21:03

Customer: Chevron	Job Date: 09-11-08	Ticket #: 5917696
Truck # Elite # 4	Operator Rick Edwards	ADC USED YES
Cementor Dirk Hayes	Co Rep Brent	Lease 598-36-av-13