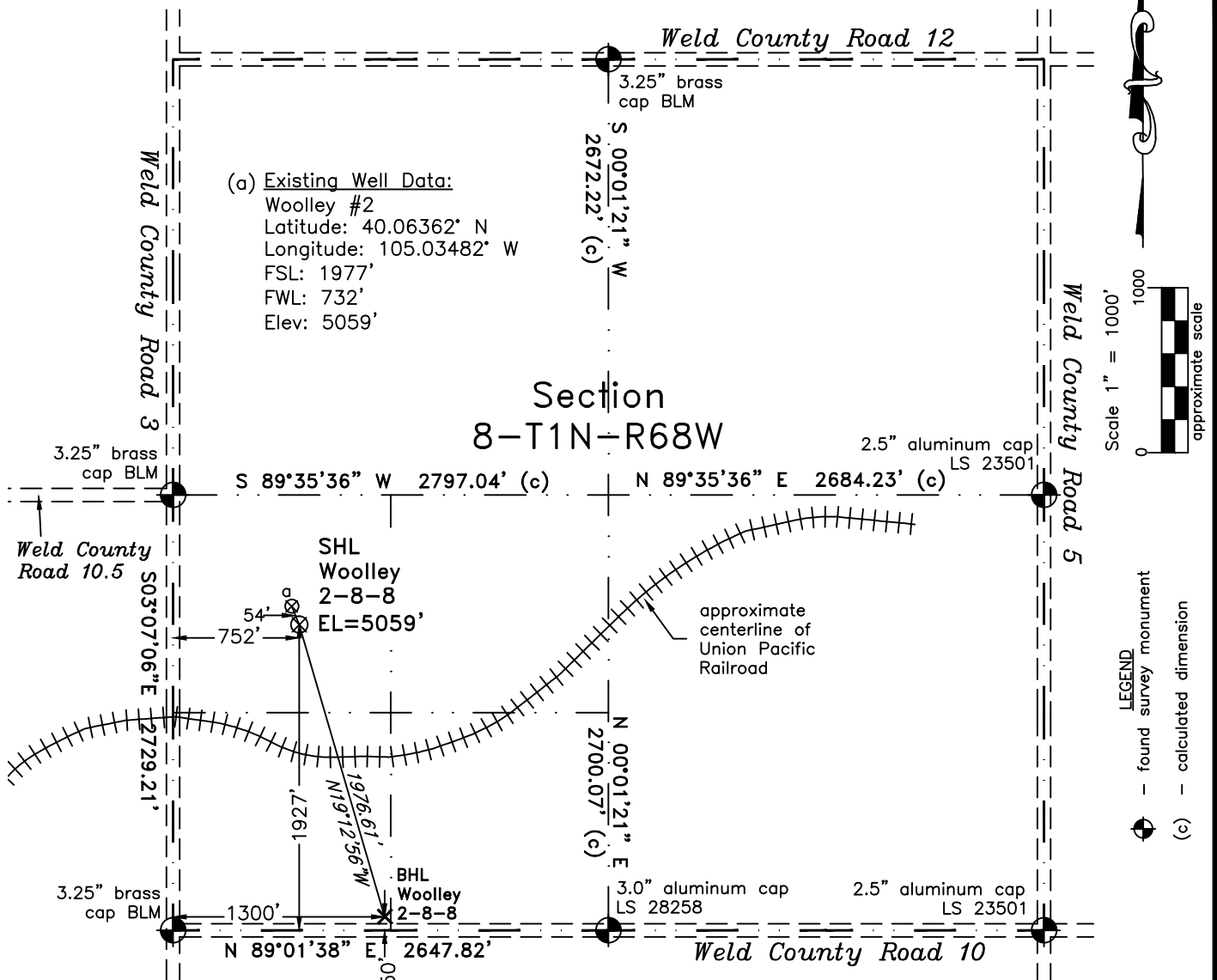


PLS Group, LLC  
220 East Mulberry Street  
Fort Collins, Colorado 80524

# WELL LOCATION CERTIFICATE

THIS MAP DOES NOT  
REPRESENT A BOUNDARY SURVEY



In accordance with a request from Doug Pearlman of EnCana Oil & Gas (USA) Inc., PLS Group, LLC has determined the location of the **Woolley 2-8-8** well site to be SHL: 1927' FSL and 752' FWL, (BHL 50' FSL and 1300' FWL) as measured at ninety (90) degrees from the section lines of Section 8, Township 1 North, Range 68 West, 6th Principal Meridian, County of Weld, CO.

## Proposed Surface Hole Data:

Latitude: N 40.06349° BHL(40.05835°)  
Longitude: W 105.03474° BHL(105.03245°)

Nearest: Building 380' northwest  
Public Road 780' west  
Property Line 581' southwest  
PDOP: 1.6

Above Ground Utility 1,096' northwest  
Railroad 627' southwest

## Notes:

- 1) Bearings and distances based upon NAD 83 Colorado North State Plane Coordinates using RTK GPS observations taken on 11/03/2010 by operator Craig Burke.
- 2) Conversion factor to ground (1.000277368).
- 3) Elevations based on NAVD 88 GPS heights and Geoid 2003 corrections.
- 4) See improvement map for visible improvements within 400 feet of pad site.
- 5) The location falls on agricultural land.

**NOTICE:** According to Colorado law you MUST commence any legal action based upon any defect in this W.L.C. within three years after you first discover such defect. In no event may any action based upon any defect in this W.L.C. be commenced more than ten years from this said date of the certification shown hereon.

I hereby certify that this Well Location Certificate was prepared by me or under my direct supervision on 10/10 for and on behalf of EnCana Oil & Gas (USA) Inc. and that I am a Land Surveyor in the State of Colorado and that I am not a party to any litigation or other proceedings involving the improvement lines shown on this map.

John R. ... LS#38219  
Job #: 10151.004