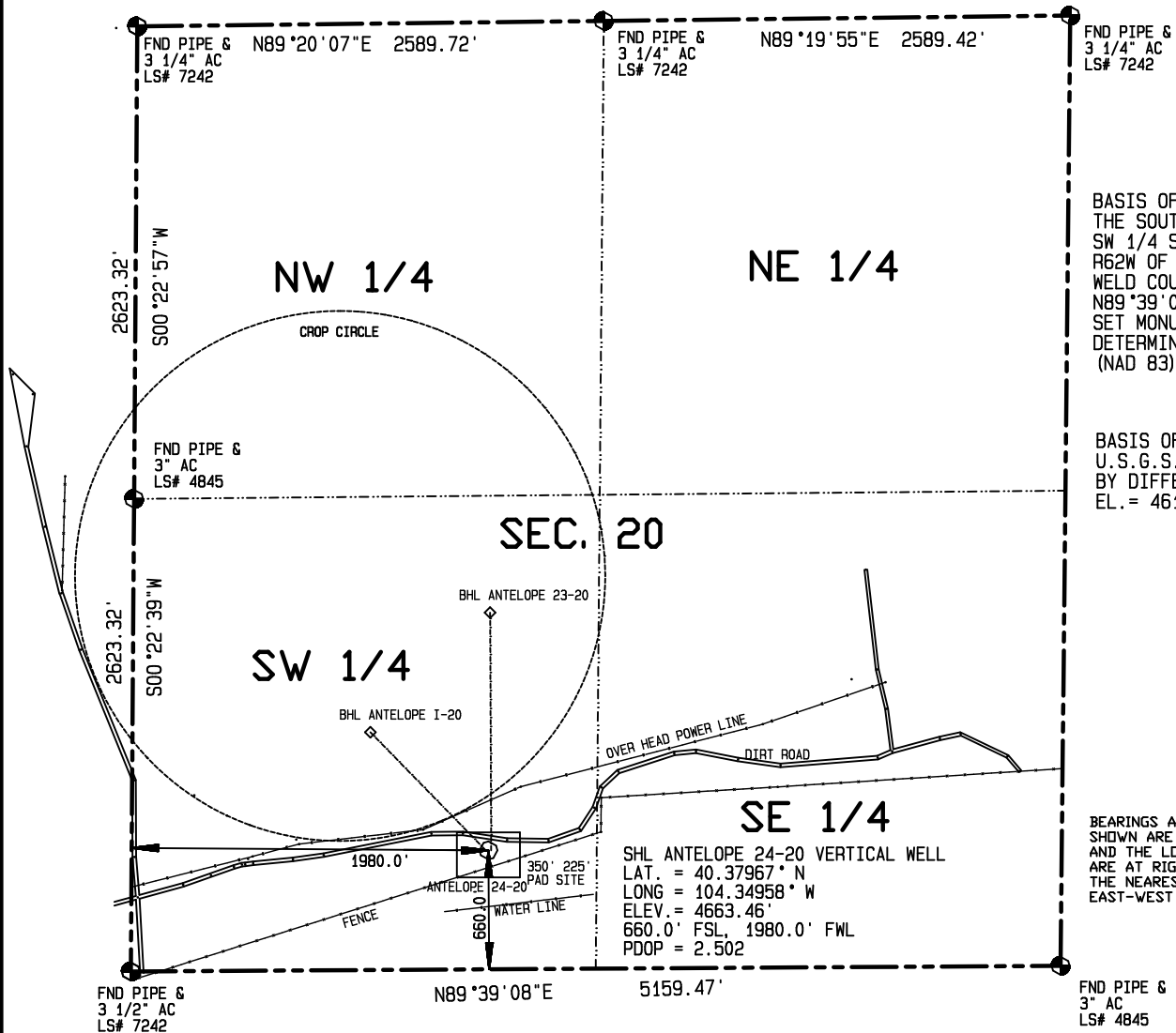


IMPROVEMENTS WITHIN 400' OF THE WELL SITE INCLUDE:
 AN OVERHEAD POWER LINE PASSES 252' NNE A FENCE PASSES 90' SSE
 A DIRT FIELD ROAD PASSES 63' NORTH A WATER LINE PASSES 310' SOUTH
 THE EDGE OF A CROP CIRCLE IS 260' NNE



BASIS OF BEARINGS IS THE SOUTH LINE OF THE SW 1/4 SEC. 20, T5N, R62W OF THE 6TH P.M. WELD COUNTY, CO. BEARS N89°39'08"E BETWEEN SET MONUMENTS AS DETERMINED BY GPS (NAD 83)

BASIS OF ELEVATION IS U.S.G.S. POINT F 414 BY DIFFERENTIAL GPS EL. = 4611.18'

BEARINGS AND DISTANCES SHOWN ARE FIELD MEASURED AND THE LOCATION DISTANCES ARE AT RIGHT ANGLES FROM THE NEAREST NORTH-SOUTH AND EAST-WEST SECTION LINES.

I HEREBY CERTIFY THAT THIS PLAT IS AN ACCURATE REPRESENTATION OF A CORRECT SURVEY SHOWING THE LOCATION OF SAID WELLSITE:

1000 500 0 1000



Scale 1" = 1000'

Dan Griggs PLS# 38018

CONTRACT SURVEYORS, LTD.
 COMPLETE SURVEYING AND GLOBAL POSITIONING

2133 SOUTH BELLAIRE STREET #14
 DENVER COLORADO 80222
 (303) 756-3695



DATE OF FIELD WORK:

2 MAY 2011

DATE OF DRAWING:

11 MAY 2011

ANTELOPE 24-20 PAD SITE Vertical Well

SE 1/4, SW 1/4 SEC. 20, T5N, R62W

BONANAZA CREEK ENERGY OPERATING COMPANY, LLC

MULTIPLE WELL PLAN
 PAGE 1

CSL# 11104-24

WELD COUNTY, COLORADO