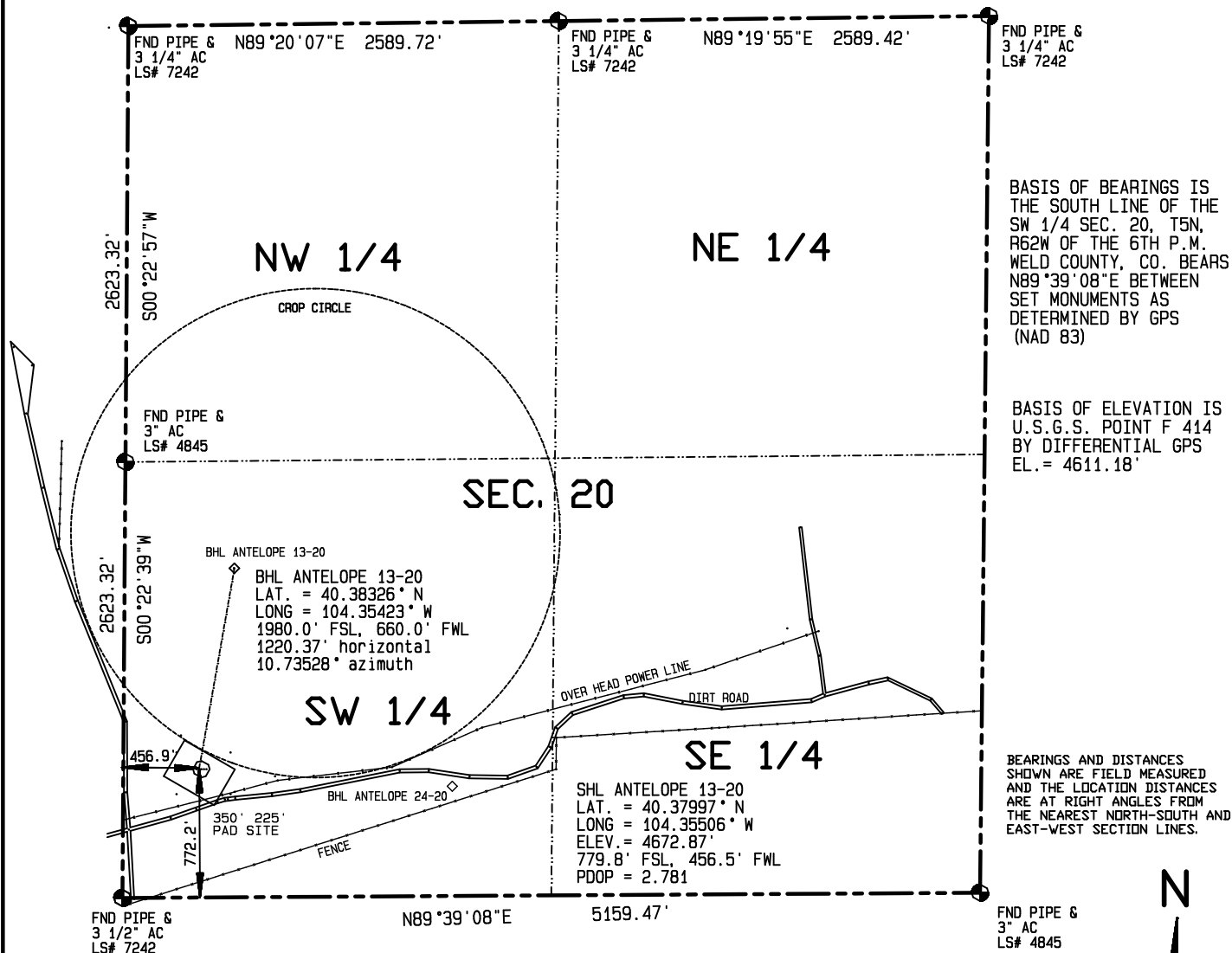


IMPROVEMENTS WITHIN 400' OF THE WELL SITE INCLUDE:
AN OVERHEAD POWER LINE PASSES 195' SSE
A DIRT FIELD ROAD PASSES 206' SSE
THE EDGE OF A CROP CIRCLE IS 106' NE



I HEREBY CERTIFY THAT THIS PLAT
IS AN ACCURATE REPRESENTATION
OF A CORRECT SURVEY SHOWING
THE LOCATION OF SAID WELLSITE:

Dan Griggs PLS# 38018

CONTRACT SURVEYORS, LTD.
COMPLETE SURVEYING AND GLOBAL POSITIONING

2133 SOUTH BELLAIRE STREET #14
DENVER COLORADO 80222
(303) 756-3695



MULTIPLE WELL PLAN
PAGE 2

CSL# 11104-23

DATE OF FIELD WORK:

10 MAY 2011

DATE OF DRAWING:

11 MAY 2011

ANTELOPE 13-20 Directional Well

SW 1/4, SW 1/4 SEC. 20, T5N, R62W

BONANAZA CREEK ENERGY OPERATING COMPANY, LLC

WELD COUNTY, COLORADO

1000 500 0 1000



Scale 1" = 1000'