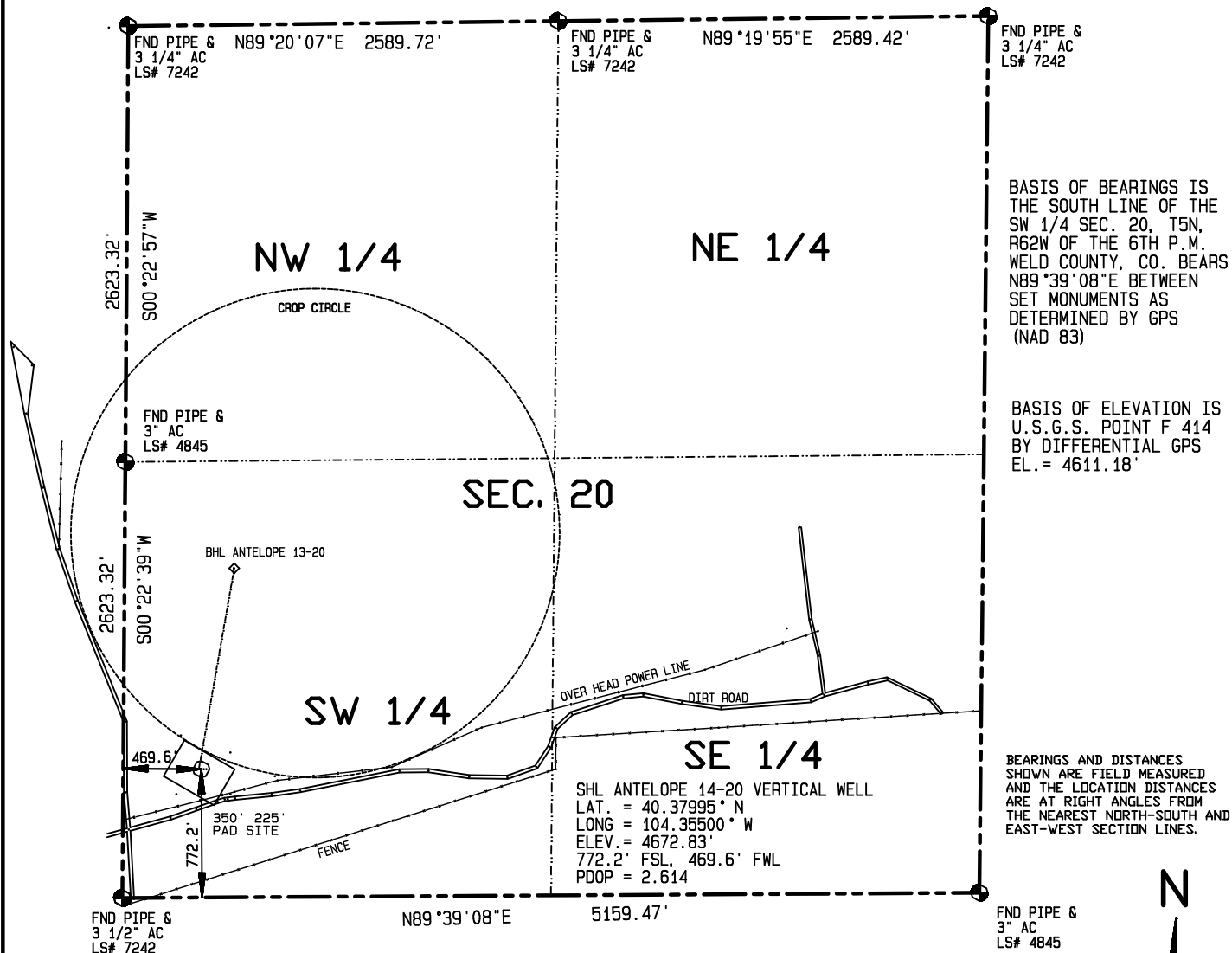
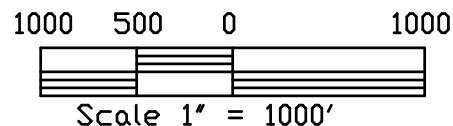


IMPROVEMENTS WITHIN 400' OF THE WELL SITE INCLUDE:  
AN OVERHEAD POWER LINE PASSES 182' SSE  
A DIRT FIELD ROAD PASSES 205' SSE  
THE EDGE OF A CROP CIRCLE IS 107' NE



I HEREBY CERTIFY THAT THIS PLAT  
IS AN ACCURATE REPRESENTATION  
OF A CORRECT SURVEY SHOWING  
THE LOCATION OF SAID WELLSITE:



Dan Griggs PLS# 38018

**CONTRACT SURVEYORS, LTD.**  
COMPLETE SURVEYING AND GLOBAL POSITIONING

2133 SOUTH BELLAIRE STREET #14  
DENVER COLORADO 80222  
(303) 756-3695



MULTIPLE WELL PLAN  
PAGE 1

CSL# 11104-23

DATE OF FIELD WORK:

10 MAY 2011

DATE OF DRAWING:

11 MAY 2011

ANTELOPE 14-20 PAD SITE Vertical Well

SW 1/4, SW 1/4 SEC. 20, T5N, R62W

BONANAZA CREEK ENERGY OPERATING COMPANY, LLC

WELD COUNTY, COLORADO