

**CHEVRON - MID-CONTINENT EBIZ
11111 S WILCREST DR - DO NOT MAIL
HOUSTON, Texas**

SKR
SKR 598-36-AV-11

H&P 318/H&P/318

Post Job Summary

Cement Production Casing

Prepared for: BRENT SWANK
Date Prepared: 08/24/08
Version: 1

Service Supervisor: GALLEGOS, JASON

Submitted by:

HALLIBURTON

The Road to Excellence Starts with Safety

Sold To #: 338668	Ship To #: 2666601	Quote #:	Sales Order #: 6069491
Customer: CHEVRON - MID-CONTINENT EBIZ	Customer Rep: MEIER, DAN		
Well Name: SKR	Well #: 598-36-AV-11	API/UWI #:	
Field: PICEANCE	City (SAP): PARACHUTE	County/Parish: Garfield	State: Colorado
Contractor: H&P 318	Rig/Platform Name/Num: H&P 318		
Job Purpose: Cement Production Casing			
Well Type: Development Well	Job Type: Cement Production Casing		
Sales Person: DUNNING, DUSTIN	Srvc Supervisor: GALLEGOS, JASON	MBU ID Emp #:	386647

Job Personnel

HES Emp Name	Exp Hrs	Emp #	HES Emp Name	Exp Hrs	Emp #	HES Emp Name	Exp Hrs	Emp #
CARTER, ERIC Earl	8	345598	GALLEGOS, JASON Michael	8	386647	HAMMOND, DENNIS C	8	287025
HAYES, JESSE Doug	8	403601	VIGIL, JOSHUA Quentin	8	447606			

Equipment

HES Unit #	Distance-1 way	HES Unit #	Distance-1 way	HES Unit #	Distance-1 way	HES Unit #	Distance-1 way
10547376	120 MILES	10829465	120 MILES	10897797	120 MILES	10296152	120 MILES
10886087	120 MILES	10804575	120 MILES	10744549	120 MILES		

Job Hours

Date	On Location Hours	Operating Hours	Date	On Location Hours	Operating Hours	Date	On Location Hours	Operating Hours
08/24/08	8	2						
TOTAL			Total is the sum of each column separately					

Job

Formation Name	Formation Depth (MD)	Top	Bottom	Job depth MD	Job Depth TVD	Water Depth	Perforation Depth (MD)	From	To	Job Times	Date	Time	Time Zone
		0	6384	6358.76 ft	6384 ft	Wk Ft Above Floor	4 FT			Called Out	23 - Aug - 2008	00:01	MST
										On Location	24 - Aug - 2008	05:00	MST
										Job Started	24 - Aug - 2008	10:53	MST
										Job Completed	24 - Aug - 2008	12:13	MST
										Departed Loc	24 - Aug - 2008	14:00	MST

Well Data

Description	New / Used	Max pressure psig	Size in	ID in	Weight lbm/ft	Thread	Grade	Top MD ft	Bottom MD ft	Top TVD ft	Bottom TVD ft
OPEN HOLE				7.875				1500.	6322.		
PRODUCTION CASING	New		4.5	4.	11.6		N-80	.	6322.		

Sales/Rental/3rd Party (HES)

Description	Qty	Qty uom	Depth	Supplier
PLUG,CMTG,TOP,4 1/2,HWE,3.65 MIN/4.14 MA	1	EA		
PORT. DAS W/CEMWIN;ACQUIRE W/HES, ZI	1	JOB		
ADC (AUTO DENSITY CTRL) SYS, /JOB,ZI	1	JOB		

Tools and Accessories

Type	Size	Qty	Make	Depth	Type	Size	Qty	Make	Depth	Type	Size	Qty	Make
Guide Shoe					Packer					Top Plug	4.5	1	
Float Shoe					Bridge Plug					Bottom Plug			
Float Collar					Retainer					SSR plug set			
Insert Float										Plug Container	4.5	1	
Stage Tool										Centralizers			

Miscellaneous Materials

Gelling Agt	Conc	Surfactant	Conc	Acid Type	Qty	Conc	%
Treatment Fld	Conc	Inhibitor	Conc	Sand Type	Size	Qty	

Fluid Data										
Stage/Plug #: 1										
Fluid #	Stage Type	Fluid Name	Qty	Qty uom	Mixing Density lbm/gal	Yield ft ³ /sk	Mix Fluid Gal/sk	Rate bbl/min	Total Mix Fluid Gal/sk	
1	DYED SPACER		30.0	bbl	8.33	.0	.0	.0		
2	Lead Cement	VARICEM (TM) CEMENT (452009)	295.0	sacks	12.8	1.55	7.15			
3	Tail Cement	VARICEM (TM) CEMENT (452009)	670.0	sacks	13.2	1.43	6.19			
4	Displacement		98.7	bbl	8.4	.0	.0	.0		
Calculated Values		Pressures		Volumes						
Displacement	98.7	Shut In: Instant		Lost Returns	NO	Cement Slurry	252	Pad		
Top Of Cement		5 Min		Cement Returns	NONE	Actual Displacement	98.7	Treatment		
Frac Gradient		15 Min		Spacers	30	Load and Breakdown		Total Job	279.8	
Rates										
Circulating		Mixing	8	Displacement	10	Avg. Job	9			
Cement Left In Pipe	Amount	46.38 ft	Reason	Shoe Joint						
Frac Ring # 1 @	ID	Frac ring # 2 @	ID	Frac Ring # 3 @	ID	Frac Ring # 4 @	ID			
The Information Stated Herein Is Correct				Customer Representative Signature						

The Road to Excellence Starts with Safety

The Road to Excellence Starts With Safety			
Sold To #: 338668	Ship To #: 2666601	Quote #:	Sales Order #: 6069491
Customer: CHEVRON - MID-CONTINENT EBIZ		Customer Rep: MEIER, DAN	
Well Name: SKR		Well #: 598-36-AV-11	API/UWI #:
Field: PICEANCE	City (SAP): PARACHUTE	County/Parish: Garfield	State: Colorado
Legal Description:			
Lat: N 0 deg. OR N 0 deg. 0 min. 0 secs.		Long: E 0 deg. OR E 0 deg. 0 min. 0 secs.	
Contractor: H&P 318		Rig/Platform Name/Num: H&P 318	
Job Purpose: Cement Production Casing			Ticket Amount:
Well Type: Development Well		Job Type: Cement Production Casing	
Sales Person: DUNNING, DUSTIN		Srvc Supervisor: GALLEGOS, JASON	MBU ID Emp #: 386647

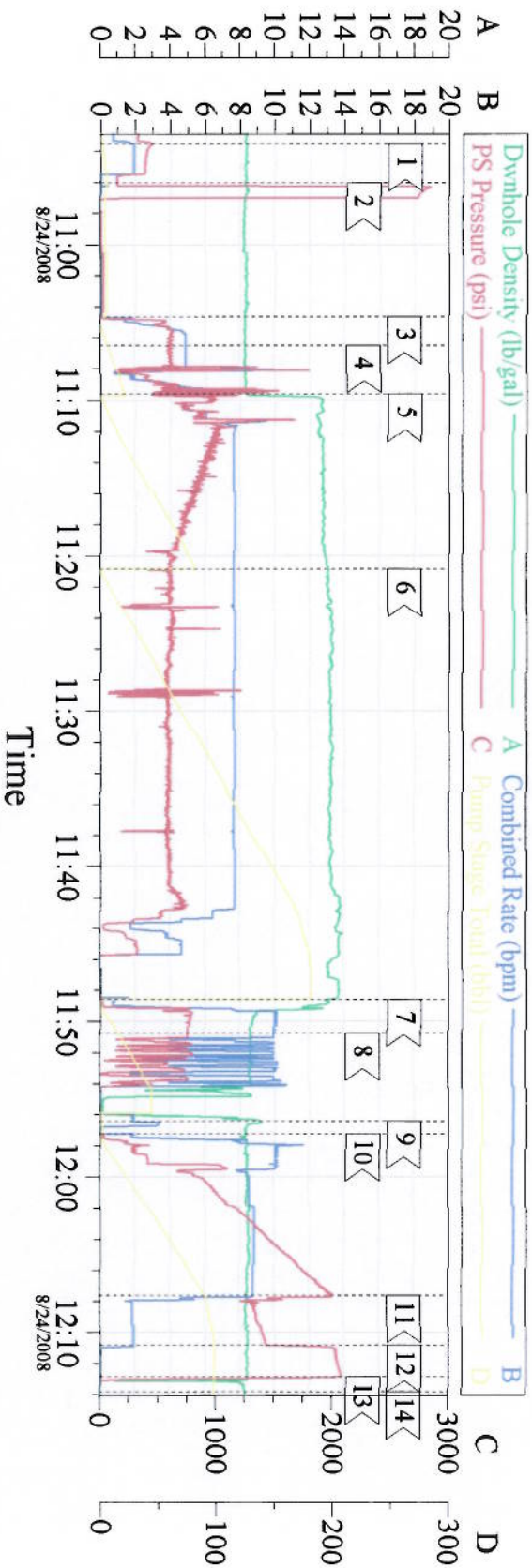
Activity Description	Date/Time	Cht #	Rate bbl/min	Volume bbl		Pressure psig		Comments
				Stage	Total	Tubing	Casing	
Call Out	08/24/2008 00:01							
Depart Yard Safety Meeting	08/24/2008 01:00							ATTENDED BY ENTIRE HES CREW
Crew Leave Yard	08/24/2008 01:10							
Arrive At Loc	08/24/2008 03:00							RIG RUNNING CASING
Assessment Of Location Safety Meeting	08/24/2008 03:10							ATTENDED BY ENTIRE HES CREW
Other	08/24/2008 03:20							SPOT EQUIPMENT
Pre-Rig Up Safety Meeting	08/24/2008 10:00							ATTENDED BY ENTIRE HES CREW
Rig-Up Equipment	08/24/2008 10:05							
Pre-Job Safety Meeting	08/24/2008 10:30							ATTENDED BY ENTIRE HES CREW AND ENTIRE RIG CREW
Start Job	08/24/2008 10:53							TP 6538.76', TD 6384', SJ 46.38', CASING 4 1/2" 11.6# N-80, HOLE 7 7/8", PLUG CONTAINER #D0044
Test Lines	08/24/2008 10:56		2	2			3000.0	PRESSURE HELD
Pump Spacer 1	08/24/2008 11:04		8	10			606.0	POLYFLAKE AND DYE
Pump Spacer 2	08/24/2008 11:06		8	20			720.0	FRESH WATER
Pump Lead Cement	08/24/2008 11:09		8	81.4			953.0	295 SKS, MIXED @ 12.8 PPG, 1.55 YIELD, 7.15 GAL/SK
Pump Tail Cement	08/24/2008 11:20		8	170.6			588.0	670 SKS, MIXED @ 13.2 PPG, 1.43 YIELD, 6.19 GAL/SK

Activity Description	Date/Time	Cht #	Rate bbl/ min	Volume bbl		Pressure psig		Comments
				Stage	Total	Tubing	Casing	
Shutdown	08/24/2008 11:48							
Clean Lines	08/24/2008 11:50							
Drop Plug	08/24/2008 11:56							PLUG LAUNCHED
Pump Displacement	08/24/2008 11:57		10				1860. 0	KCL WATER
Slow Rate	08/24/2008 12:07		2	90			1584. 0	
Bump Plug	08/24/2008 12:10		2	97.8			1520. 0	PRESSURED UP TO 2020 PSI
Check Floats	08/24/2008 12:12							FLOATS HELD. PIPE WAS NOT MOVED DURING JOB.
End Job	08/24/2008 12:13							GOOD CIRCULATION THROUGHOUT JOB.
Post-Job Safety Meeting (Pre Rig-Down)	08/24/2008 12:20							ATTENDED BY ENTIRE HES CREW
Rig-Down Equipment	08/24/2008 12:30							
Depart Location Safety Meeting	08/24/2008 13:50							ATTENDED BY ENTIRE HES CREW
Crew Leave Location	08/24/2008 14:00							THANK YOU FOR USING HALLIBURTON CEMENT, JASON GALLEGOS AND CREW

X

COMPANY REP

CHEVRON 4 1/2" LONGSTRING



Event Log

1 <	START JOB	10:53:32	2 <	TEST LINES	10:56:03
3 <	DYE/POLYFLAKE SPACER	11:04:40	4 <	FRESH WATER	11:06:29
5 <	LEAD CEMENT	11:09:37	6 <	TAIL CEMENT	11:20:53
7 <	SHUT DOWN	11:48:34	8 <	CLEAN LINES	11:50:45
9 <	DROP PLUG	11:56:26	10 <	KCL DISPLACEMENT	11:57:13
11 <	SLOW RATE	12:07:37	12 <	BUMP PLUG	12:10:48
13 <	CHECK FLOATS	12:12:51	14 <	END JOB	12:13:48

Customer:	CHEVRON	Job Date:	08/24/08	Ticket #:	6069491
Well name:	SKR	Well #	598-36-AV-11	ADC Used:	YES
Pump Truck / Operator	ELITE 9/ERIC CARTTR	CO Rep:	BRENT SWANK	Cement:	JASON GALLEGOS