

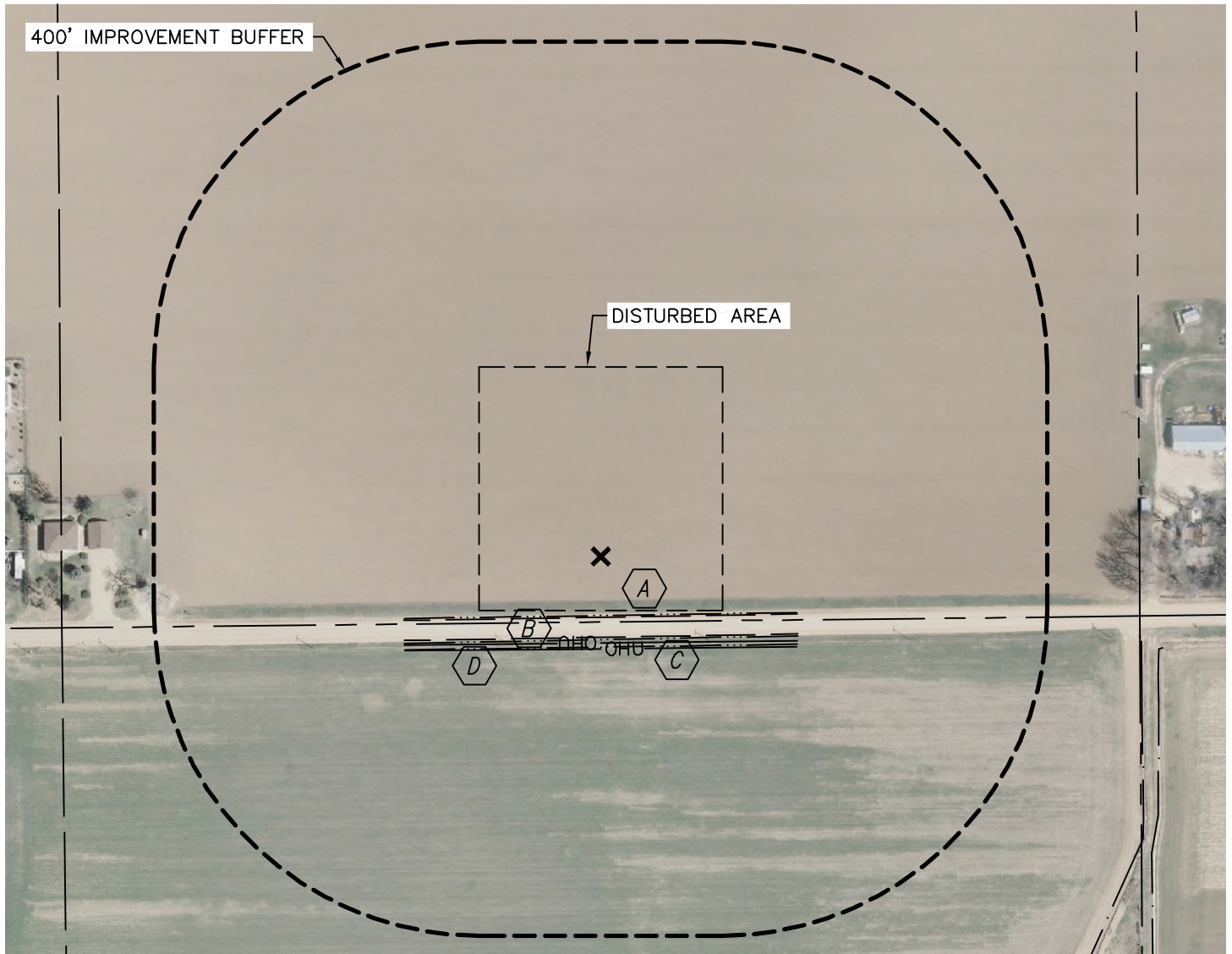


Lat40°, Inc. 1635 Foxtrail Drive, Suite 325 Loveland, CO 970-776-3321

# PRODUCTION FACILITY LOCATION DRAWING

SECTION: 4  
TOWNSHIP: 3N  
RANGE: 68W





E.L. MINCH 24-4, 35-4, 14-4D




## REFERENCE POINT LOCATION:

LATITUDE: 40.24789°N  
LONGITUDE: 105.01055°W  
ELEV: 5054'  
PDOP: 1.6  
DATE: 4/21/11  
OPERATOR: ADAM KELLY  
1/41/4: SE1/4SW1/4  
FSL: 80'  
FWL: 1992'  
DISTANCE TO WELL: 585'  
ASSOCIATED NEW WELLS:  
E.L. MINCH 24-4, E.L. MINCH 35-4,  
E.L. MINCH 14-4D  
ASSOCIATED EXISTING WELLS:  
NONE

## IMPROVEMENTS:

-  BARROW DITCH 72' & 102' S
-  COUNTY ROAD 36 75' S
-  OVERHEAD UTILITY 106' S
-  DITCH 111' SOUTH

## LEGEND

 - REFERENCE POINT  
ALL DISTANCES ARE APPROXIMATE.

NEAREST: BUILDING 600' W,  
PUBLIC ROAD 75' S (CR 36), ABOVE GROUND UTILITY 106' S,  
RAILROAD 5200' SE, PROPERTY LINE 80' S

