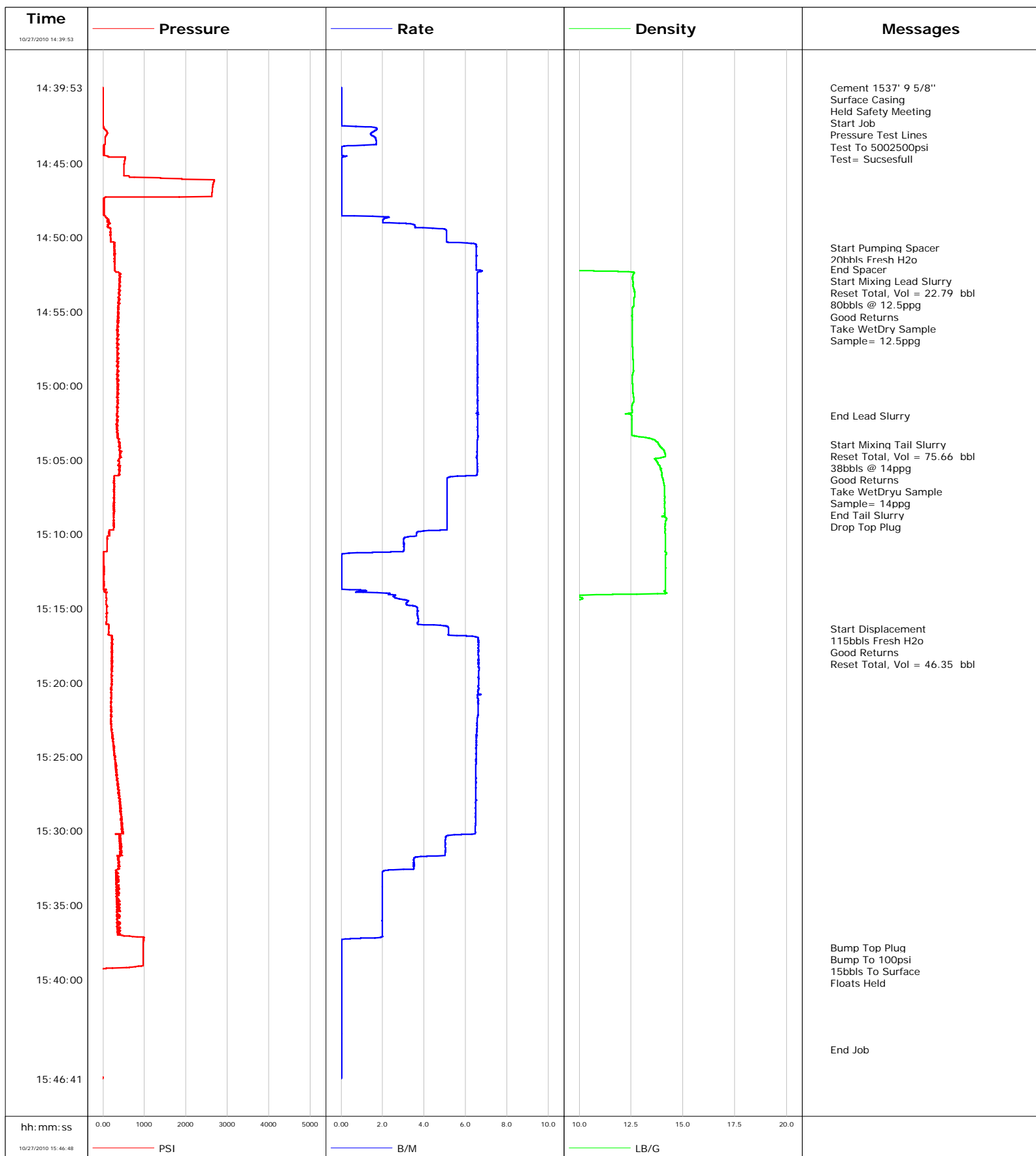


Well MF07C-E09 696
Field N PARACHUTE
Engineer
Country United States

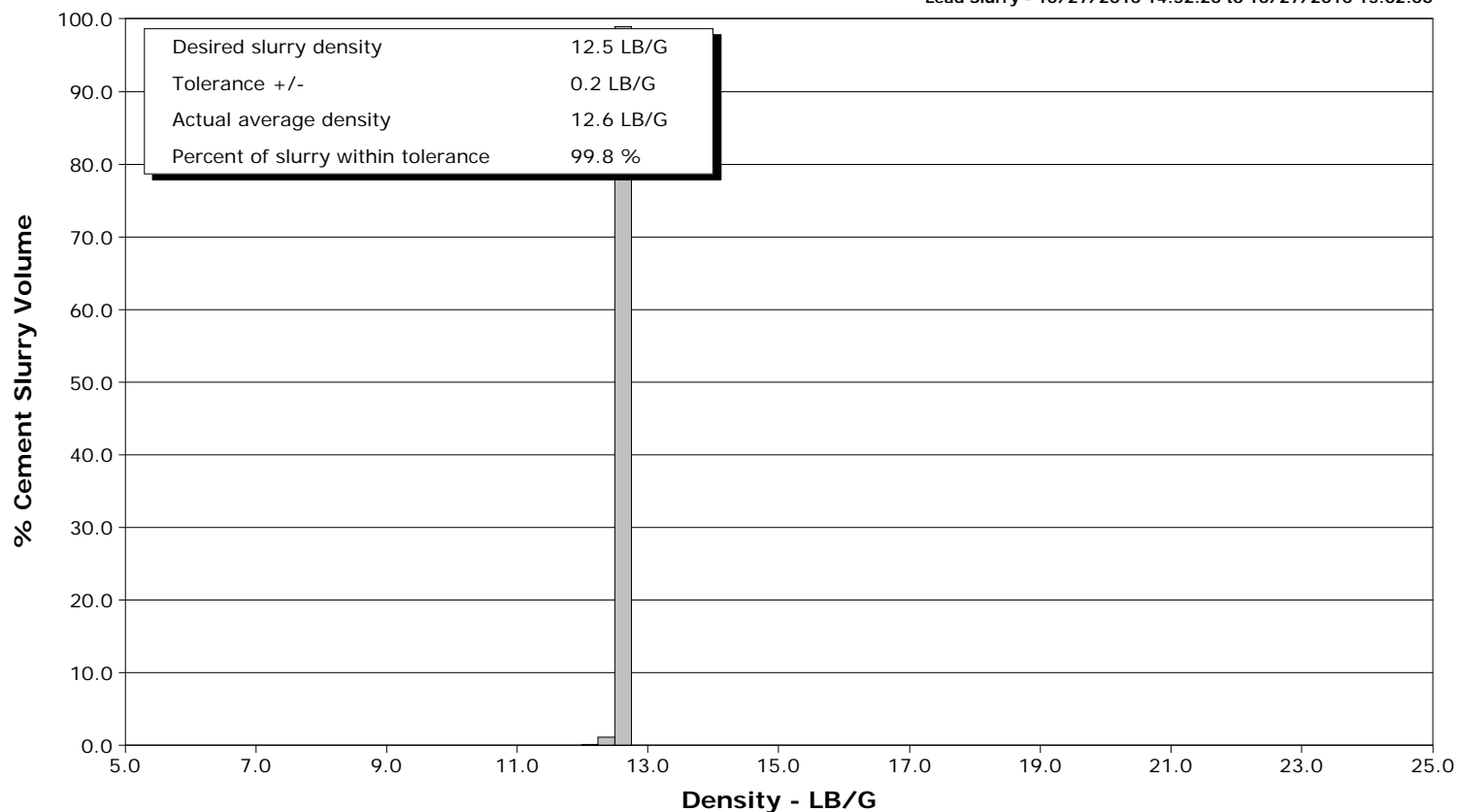
Client ENCANA
SIR No. B708-00159
Job Type SURFACE
Job Date 10-27-2010



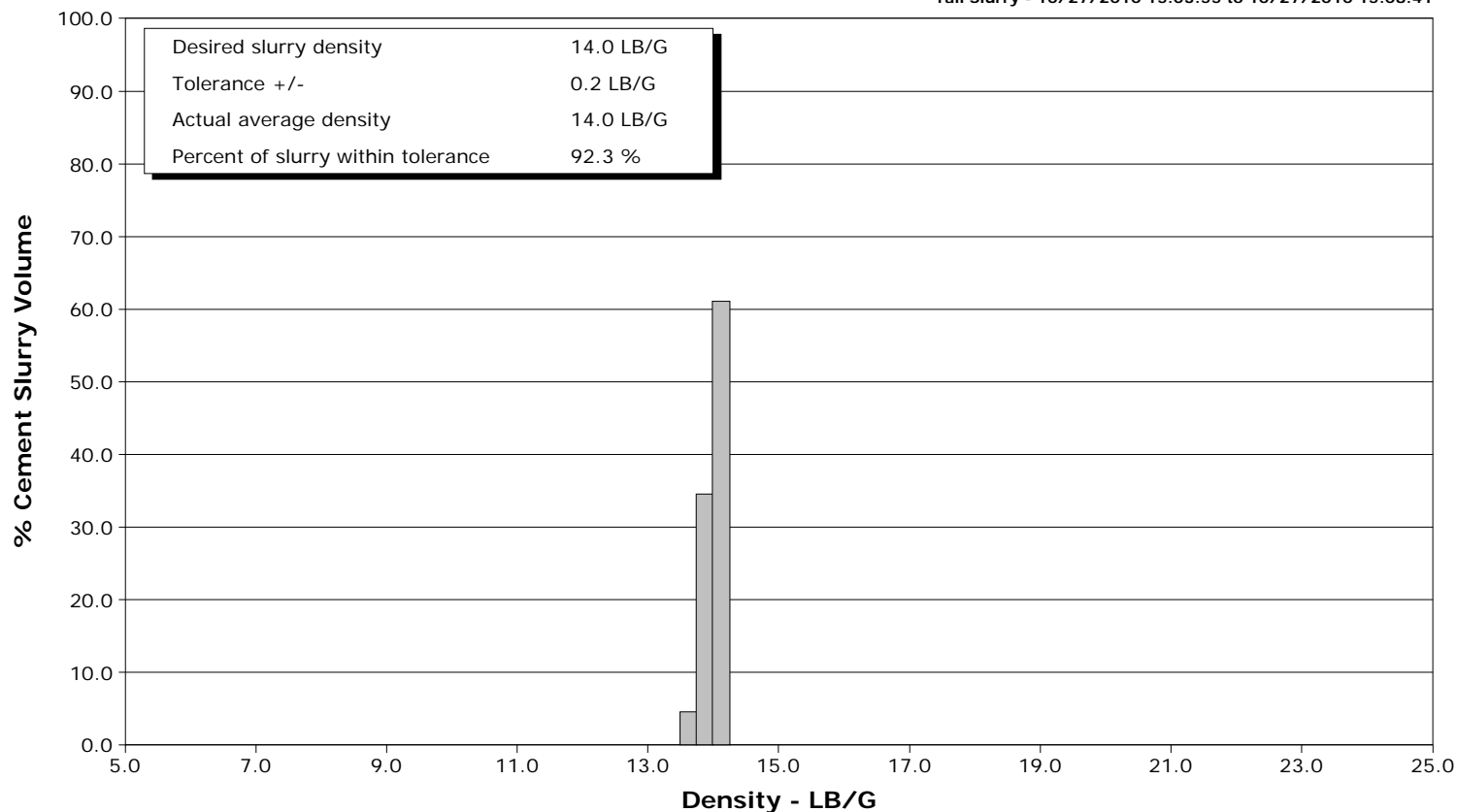
Well MF07C-E09 696
Field N PARACHUTE
Engineer
Country United States

Client ENCANA
SIR No. B708-00159
Job Type SURFACE
Job Date 10-27-2010

Lead Slurry - 10/27/2010 14:52:26 to 10/27/2010 15:02:00



Tail Slurry - 10/27/2010 15:03:55 to 10/27/2010 15:08:41





Cementing Service Report

				Customer ENCANA			Job Number B708-00159								
Well MF07C-E09 696			Location (legal) N PARACHUTE			Schlumberger Location GJCO		Job Start Oct/27/2010							
Field N PARACHUTE		Formation Name/Type		Deviation		Bit Size 12.3 in		Well MD		Well TVD					
County GARFIELD		State/Province Colorado		BHP		BHST		BHCT		Pore Press. Gradient					
Well Master 0631223361		API/UWI													
Rig Name PATTERSON 326		Drilled For Gas		Service Via Land		Casing/Liner									
						Depth, ft		Size, in		Weight, lb/ft		Grade		Thread	
Offshore Zone		Well Class New		Well Type Development		1537.0		9.630		36.0		K55		8RD	
						0.0		0.000		0.0					
Drilling Fluid Type		Max. Density		Plastic Viscosity		Tubing/Drill Pipe									
						Depth,		Size,		Weight,		Grade		Thread	
Service Line Cementing		Job Type SURFACE													
Max. Allowed Tub. Press		Max. Allowed Ann. Press		WH Connection Single Cement head		Perforations/Open Hole									
						Top,		Bottom,				No. of Shots		Total Interval	
														Diameter	
						Treat Down Casing		Displacement 115.0 bbl		Packer Type		Packer Depth			
						Tubing Vol.		Casing Vol. 118.0 bbl		Annular Vol. 99.0 bbl		Openhole Vol. 119.0 bbl			
Casing/Tubing Secured <input checked="" type="checkbox"/>		1 Hole Vol. Circulated prior to Cement <input checked="" type="checkbox"/>				Casing Tools				Squeeze Job					
Lift Pressure 760 psi						Shoe Type Guide				Squeeze Type					
Pipe Rotated <input type="checkbox"/>		Pipe Reciprocated <input type="checkbox"/>				Shoe Depth 1537.0 ft				Tool Type					
No. Centralizers		Top Plugs 1		Bottom Plugs		Stage Tool Type				Tool Depth					
Cement Head Type Single						Stage Tool Depth				Tail Pipe Size					
Job Scheduled For Oct/27/2010		Arrived on Location Oct/27/2010		Leave Location Oct/27/2010		Collar Type Diff-Fill				Tail Pipe Depth					
						Collar Depth 1491.0 ft				Sqz. Total Vol.					
Date	Time 24-hr clock	Treating Pressure PSI	Flow Rate B/M	Density LB/G	Volume BBL	Message									
10/27/2010	12:49:54					Started Acquisition									
10/27/2010	14:39:53					Cement 1537' 9 5/8"									
10/27/2010	14:39:53					Surface Casing									
10/27/2010	14:39:53					Held Safety Meeting									
10/27/2010	14:39:53	-3	0.0	8.34	0.0										
10/27/2010	14:39:54					Start Job									
10/27/2010	14:39:54	-3	0.0	8.34	0.0										
10/27/2010	14:39:57					Pressure Test Lines									
10/27/2010	14:39:57	-3	0.0	8.34	0.0										
10/27/2010	14:39:58					Test To 5002500psi									
10/27/2010	14:39:58					Test= Sucsesfull									
10/27/2010	14:39:58	-3	0.0	8.34	0.0										
10/27/2010	14:41:54	-5	0.0	8.34	0.0										
10/27/2010	14:43:54	16	0.0	8.34	2.1										
10/27/2010	14:45:54	634	0.0	8.34	2.1										
10/27/2010	14:47:54	18	0.0	8.34	2.1										
10/27/2010	14:49:54	181	5.1	8.34	6.8										
10/27/2010	14:50:42					Start Pumping Spacer									
10/27/2010	14:50:42	272	6.5	8.34	11.4										
10/27/2010	14:50:43					20bbbls Fresh H2o									
10/27/2010	14:50:43	274	6.5	8.34	11.5										

Well			Field	Job Start	Customer	Job Number
MF07C-E09 696			N PARACHUTE	Oct/27/2010	ENCANA	B708-00159
Date	Time 24-hr clock	Treating Pressure PSI	Flow Rate B/M	Density LB/G	Volume BBL	Message
10/27/2010	14:52:09					End Spacer
10/27/2010	14:52:09	278	6.5	8.34	20.8	
10/27/2010	14:52:26					Start Mixing Lead Slurry
10/27/2010	14:52:26	397	6.5	12.64	22.7	
10/27/2010	14:52:27					Reset Total, Vol = 22.79 bbl
10/27/2010	14:52:27	397	6.5	12.62	22.8	
10/27/2010	14:52:30					80bbls @ 12.5ppg
10/27/2010	14:52:30					Good Returns
10/27/2010	14:52:30					Take WetDry Sample
10/27/2010	14:52:30					Sample= 12.5ppg
10/27/2010	14:52:30	396	6.6	12.60	23.1	
10/27/2010	14:53:54	399	6.6	12.69	32.3	
10/27/2010	14:55:54	354	6.6	12.56	45.4	
10/27/2010	14:57:54	344	6.6	12.58	58.6	
10/27/2010	14:59:54	356	6.6	12.58	71.7	
10/27/2010	15:01:54	345	6.6	12.23	84.9	
10/27/2010	15:02:00					End Lead Slurry
10/27/2010	15:02:00	332	6.6	12.52	85.5	
10/27/2010	15:03:54	395	6.6	13.82	98.0	
10/27/2010	15:03:55					Start Mixing Tail Slurry
10/27/2010	15:03:55	404	6.6	13.82	98.1	
10/27/2010	15:03:58					Reset Total, Vol = 75.66 bbl
10/27/2010	15:03:58	389	6.6	13.83	98.5	
10/27/2010	15:03:59					38bbls @ 14ppg
10/27/2010	15:03:59					Good Returns
10/27/2010	15:03:59					Take WetDryu Sample
10/27/2010	15:03:59					Sample= 14ppg
10/27/2010	15:03:59	389	6.5	13.84	98.6	
10/27/2010	15:05:54	383	6.6	13.98	111.1	
10/27/2010	15:07:54	254	5.1	14.12	121.6	
10/27/2010	15:08:41					End Tail Slurry
10/27/2010	15:08:41	258	5.1	14.12	125.6	
10/27/2010	15:08:42					Drop Top Plug
10/27/2010	15:08:42	255	5.1	14.12	125.7	
10/27/2010	15:09:54	159	3.6	14.14	131.6	
10/27/2010	15:11:54	7	0.0	14.16	135.9	
10/27/2010	15:13:54	39	0.7	14.14	136.0	
10/27/2010	15:15:54	82	3.7	8.70	142.6	
10/27/2010	15:16:20					Start Displacement
10/27/2010	15:16:20	144	5.2	8.63	144.5	
10/27/2010	15:16:21					115bbls Fresh H2o
10/27/2010	15:16:21					Good Returns
10/27/2010	15:16:21	138	5.2	8.63	144.5	
10/27/2010	15:16:24					Reset Total, Vol = 46.35 bbl
10/27/2010	15:16:24	139	5.2	8.62	144.8	
10/27/2010	15:17:54	209	6.6	8.49	154.1	
10/27/2010	15:19:54	220	6.6	8.38	167.3	
10/27/2010	15:21:54	183	6.6	8.38	180.6	
10/27/2010	15:23:54	237	6.5	8.34	193.7	
10/27/2010	15:25:54	314	6.5	8.34	206.7	
10/27/2010	15:27:54	402	6.5	8.34	219.7	
10/27/2010	15:29:54	452	6.5	8.34	232.6	
10/27/2010	15:31:54	391	3.5	8.34	242.9	
10/27/2010	15:33:54	395	2.0	8.34	247.9	

Well			Field		Job Start	Customer		Job Number
MF07C-E09 696			N PARACHUTE		Oct/27/2010	ENCANA		B708-00159
Date	Time 24-hr clock	Treating Pressure PSI	Flow Rate B/M	Density LB/G	Volume BBL	Message		
10/27/2010	15:37:51					Bump Top Plug		
10/27/2010	15:37:51	972	0.0	8.35	254.5			
10/27/2010	15:37:53					Bump To 100psi		
10/27/2010	15:37:53					15bbbls To Surface		
10/27/2010	15:37:53	972	0.0	8.35	254.5			
10/27/2010	15:37:54	971	0.0	8.35	254.5			
10/27/2010	15:39:24					Floats Held		
10/27/2010	15:39:24	-15	0.0	8.35	254.5			
10/27/2010	15:39:54	-14	0.0	8.35	254.5			
10/27/2010	15:41:54	-13	0.0	8.35	254.5			
10/27/2010	15:43:54	-16	0.0	8.35	254.6			
10/27/2010	15:44:44					End Job		
10/27/2010	15:44:44	-15	0.0	8.35	254.6			

Post Job Summary

Average Pump Rates,					Volume of Fluid Injected,			
Slurry	N2	Mud	Maximum Rate	Total Slurry	Mud	Spacer	N2	
Treating Pressure Summary,					Breakdown Fluid			
Maximum	Final	Average	Bump Plug to	Breakdown	Type	Volume	Density	
Avg. N2 Percent	Designed Slurry Volume 119.0 bbl		Displacement	Mix Water Temp 62 degF	Cement Circulated to Surface?	<input checked="" type="checkbox"/>	Volume	
Customer or Authorized Representative CURT CHILDERS					Washed Thru Perfs		To	
					Circulation Lost		Job Completed	
Schlumberger Supervisor JASON CRICK					<input type="checkbox"/>		<input checked="" type="checkbox"/>	
					-		-	