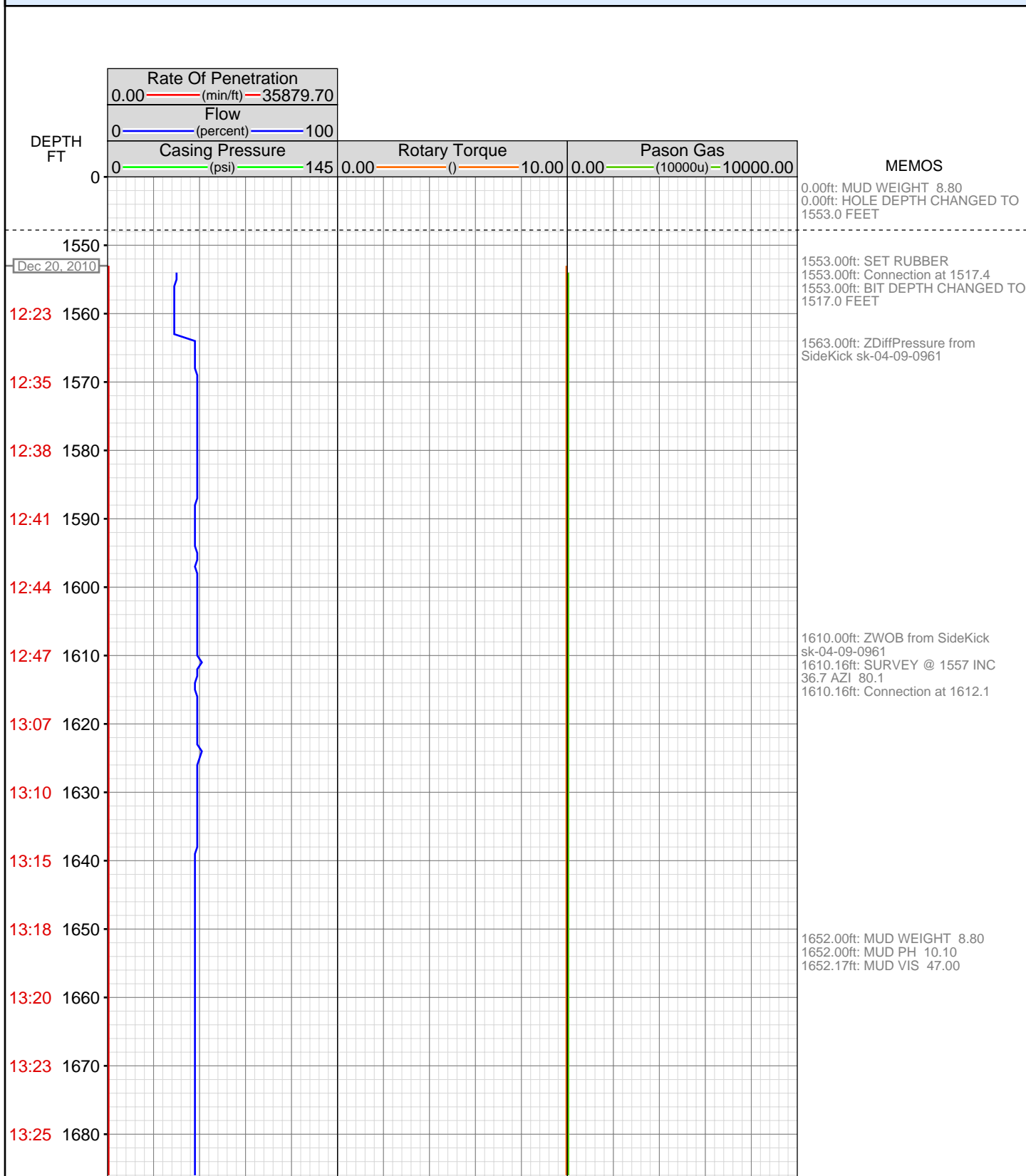


# DataHub EDR Log

Wed Dec 29, 2010 08:59:10  
Well Dossier 1292799004  
Marilyn Tucker

**OPERATOR:** EnCana Oil & Gas (USA), Inc.  
**WELL:** MF07C E09 696  
**FIELD:**  
**LOCATION:**  
**COUNTRY:** USA  
**RIG:** Pat-UTI 326

**CONTRACTOR:** Patterson-UTI Drilling Company  
**UNIQUE WELL ID:** 05-045-14996  
**SPUD DATE:** Dec 20, 2010 12:30  
**RELEASE DATE:** Dec 26, 2010 13:30



13:27 1690

13:30 1700

13:42 1710

13:44 1720

13:47 1730

13:52 1740

13:54 1750

13:57 1760

14:00 1770

14:02 1780

14:05 1790

14:08 1800

14:20 1810

14:23 1820

14:26 1830

14:30 1840

14:32 1850

14:34 1860

14:37 1870

14:39 1880

14:41 1890

14:53 1900

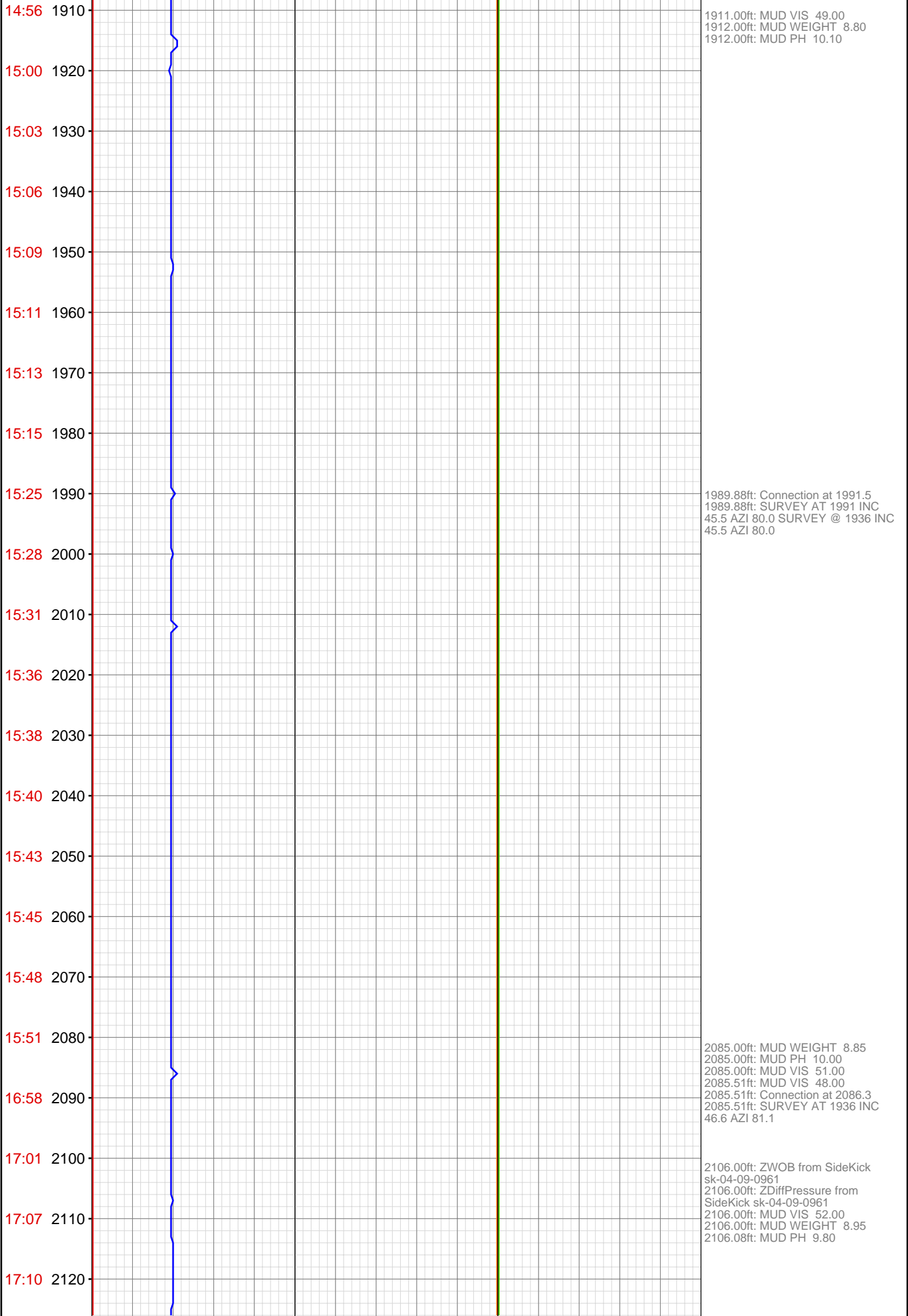


1705.00ft: ZDiffPressure from  
SideKick sk-04-09-0961  
1705.00ft: ZDiffPressure from  
SideKick sk-04-09-0961  
1705.54ft: Connection at 1707.0  
1705.54ft: ZWOB from SideKick  
sk-04-09-0961  
1705.54ft: SURVEY @ 1651 INC 38.8  
AZI 82.3  
1707.00ft: IN TALLY: HOLE DEPTH  
SET TO 1707.0

1789.00ft: MUD WEIGHT 8.80  
1789.77ft: MUD VIS 49.00  
1790.00ft: MUD PH 10.10

1800.15ft: Connection at 1801.9  
1801.01ft: SURVEY @1746 INC 40.7  
AZI 81.5

1895.90ft: Connection at 1896.7  
1895.90ft: SURVEY @ 1841 INC 42.7  
AZI 80.8  
1897.88ft: IN TALLY: HOLE DEPTH  
SET TO 1896.7



17:12 2130  
17:15 2140  
17:17 2150  
17:20 2160  
17:22 2170  
17:25 2180  
17:40 2190  
17:44 2200  
17:51 2210  
17:53 2220  
17:54 2230  
17:56 2240  
17:57 2250  
17:59 2260  
18:01 2270  
18:16 2280  
18:18 2290  
18:23 2300  
18:24 2310  
18:26 2320  
18:27 2330  
18:29 2340



2138.70ft: PUMPED SWEEP

2180.83ft: Connection at 2181.1  
2180.83ft: SURVEY AT 2126 INC  
47.3 AZI 79.6  
2180.83ft: ZDiffPressure from  
SideKick sk-04-09-0961

2208.00ft: ZWOB from SideKick  
sk-04-09-0961  
2208.00ft: ZDiffPressure from  
SideKick sk-04-09-0961  
2208.13ft: ROTATING

2275.00ft: MUD VIS 0.53  
2275.00ft: MUD WEIGHT 9.00  
2275.00ft: MUD PH 9.70  
2275.00ft: ZDiffPressure from  
SideKick sk-04-09-0961  
2275.00ft: ZDiffPressure from  
SideKick sk-04-09-0961  
2275.00ft: BIT DEPTH CHANGED TO  
2275.0 FEET  
2275.84ft: SURVEY @ 2220 INC 49.4  
AZ 79  
2275.84ft: Connection at 2275.8  
2275.84ft: SLIDING  
2275.84ft: PUMPED SWEEP

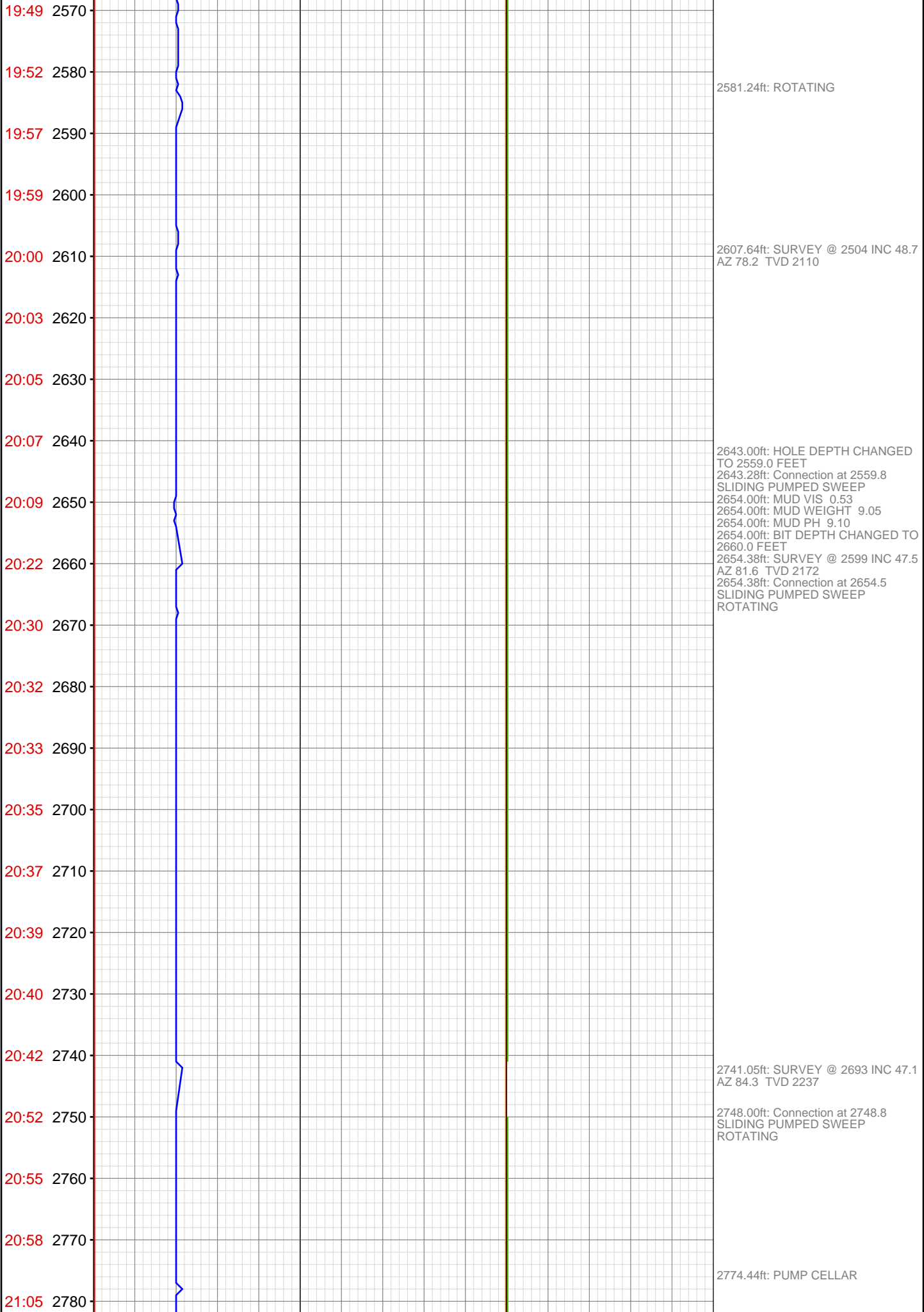
18:31	2350
18:33	2360
18:45	2370
18:47	2380
18:52	2390
18:54	2400
18:55	2410
18:57	2420
18:59	2430
19:01	2440
19:02	2450
19:04	2460
19:16	2470
19:22	2480
19:24	2490
19:26	2500
19:28	2510
19:29	2520
19:31	2530
19:33	2540
19:35	2550
19:46	2560

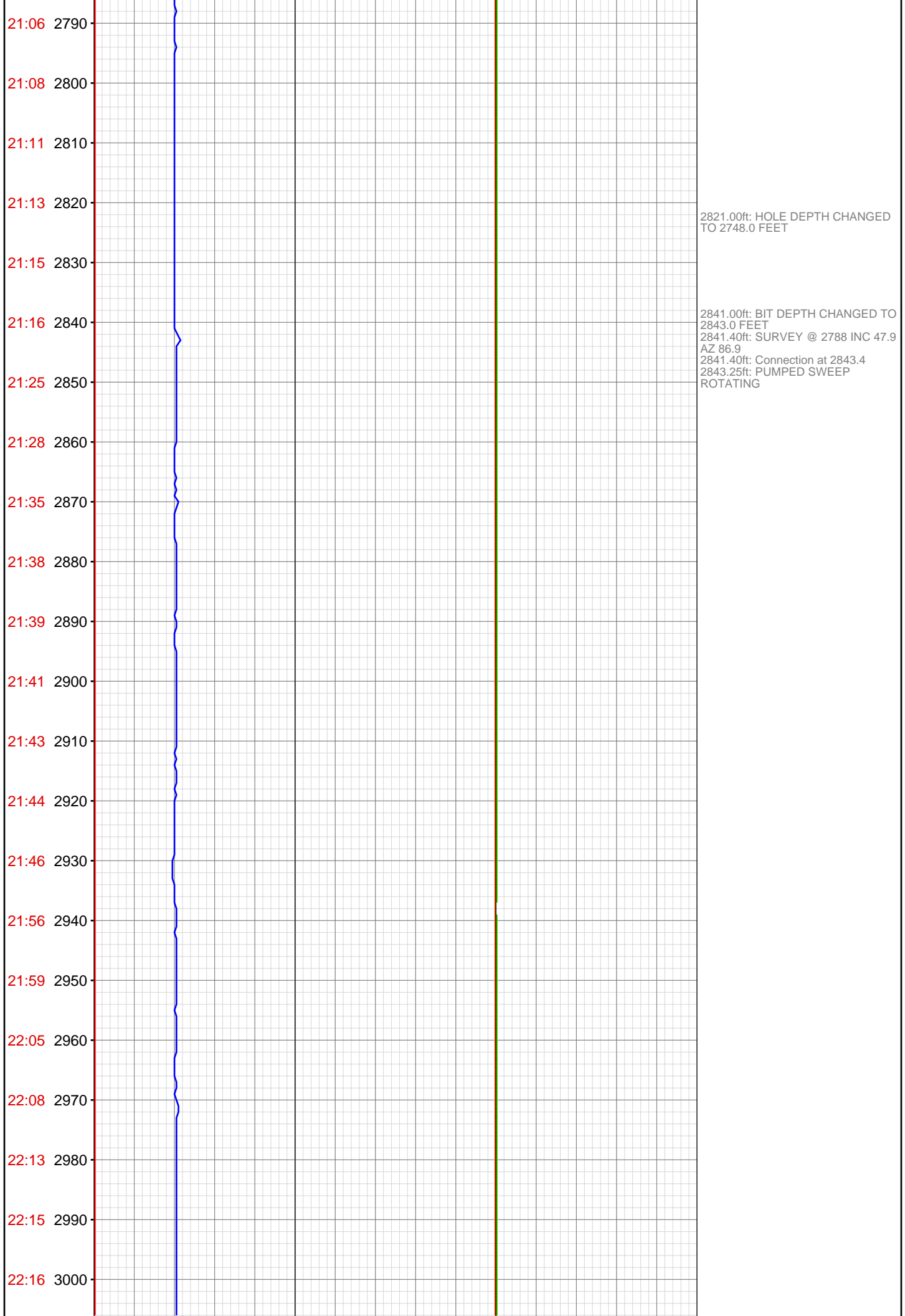


2368.78ft: SURVEY @ 2315 INC 49.7  
AZ 77.4 TVD 1985

2386.18ft: ROTATING

2451.49ft: Connection at 2370.6  
SLIDING  
2452.00ft: HOLE DEPTH CHANGED  
TO 2370.0 FEET  
2452.23ft: PUMPED SWEEP  
2461.00ft: BIT DEPTH CHANGED TO  
2465.0 FEET  
2461.68ft: SURVEY @ 2410 INC 48.3  
AZ 80.3 TVD 2108  
2461.68ft: Connection at 2465.3  
SLIDING PUMPED SWEEP  
2466.00ft: MUD VIS 0.53  
2466.00ft: MUD WEIGHT 9.00  
2466.55ft: MUD PH 9.50  
2473.09ft: ROTATING





22:18 3010  
22:20 3020  
22:21 3030  
22:32 3040  
22:36 3050  
22:39 3060  
22:45 3070  
22:47 3080  
22:49 3090  
22:51 3100  
22:53 3110  
22:55 3120  
23:00 3130  
23:00 3140  
23:04 3210  
23:10 3220  
23:46 3230  
23:49 3240  
23:56 3250  
23:58 3260  
Dec 21, 2010  
00:00 3270  
00:02 3280



3021.00ft: HOLE DEPTH CHANGED  
TO 2938.0 FEET  
3021.90ft: SURVEY @ 2883 INC 47.6  
AZ 87.9  
3021.90ft: Connection at 2938.3  
SLIDING PUMPED SWEEP  
ROTATING  
3034.00ft: MUD VIS 0.53  
3034.00ft: MUD WEIGHT 9.10  
3034.00ft: MUD PH 8.90  
3034.00ft: BIT DEPTH CHANGED TO  
3033.0 FEET  
3034.12ft: SURVEY @ 2978 INC 48.6  
AZ 81.9 TVD 2429  
3034.12ft: Connection at 3033.1  
SLIDING  
3034.12ft: PUMPED SWEEP  
ROTATING

3208.13ft: SURVEY @ 3072 INC 49.1  
AZ 82.4 TVD 2491  
3209.06ft: Connection at 3127.8  
SLIDING PUMPED SWEEP  
ROTATING

3231.00ft: MUD VIS 0.52  
3231.00ft: MUD WEIGHT 9.20  
3231.00ft: MUD PH 8.70



00:04 3290  
00:06 3300  
00:09 3310  
00:19 3320  
00:24 3330  
00:28 3340  
00:32 3350  
00:38 3360  
00:40 3370  
00:42 3380  
00:44 3390  
00:46 3400  
00:49 3410  
01:00 3420  
01:04 3430  
01:08 3440  
01:15 3450  
01:17 3460  
01:19 3470  
01:21 3480  
01:25 3490  
01:27 3500



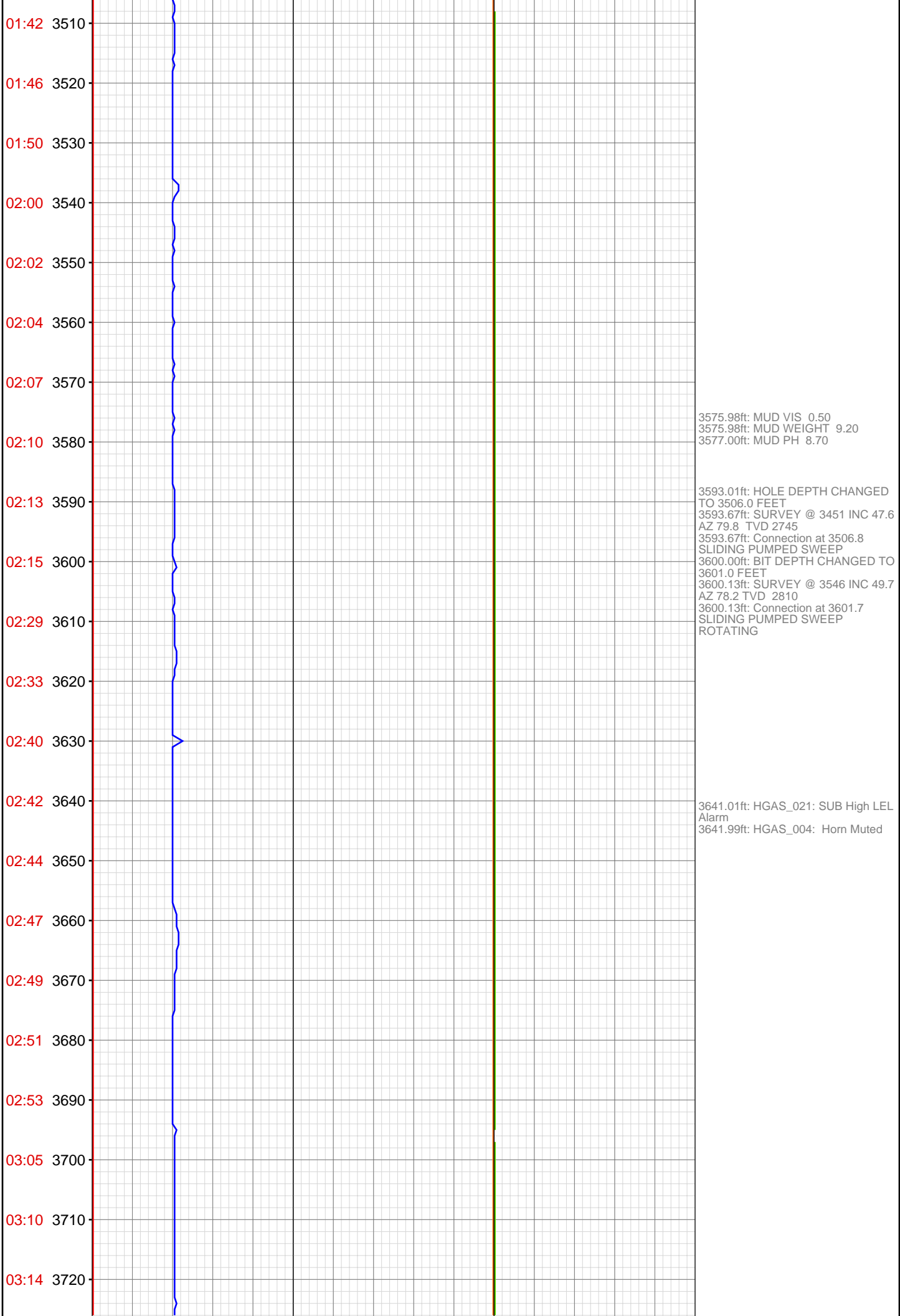
3304.00ft: HOLE DEPTH CHANGED  
TO 3222.0 FEET  
3304.92ft: SURVEY @ 3167 INC 48.6  
AZ 78.9 TVD 2551  
3304.92ft: Connection at 3222.5  
SLIDING PUMPED SWEEP  
ROTATING

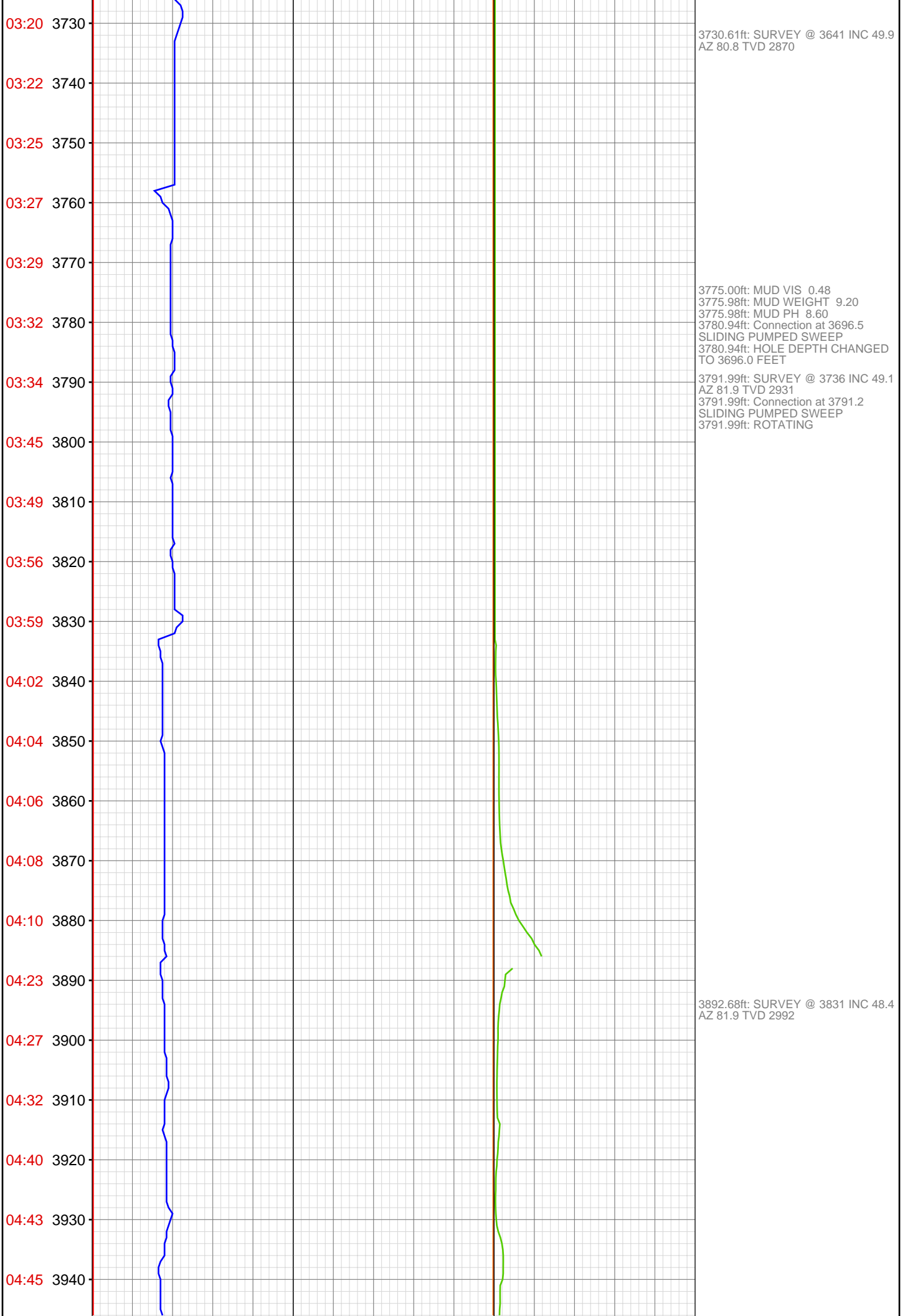
3347.01ft: MUD VIS 0.52  
3347.01ft: MUD WEIGHT 9.20  
3347.01ft: MUD PH 8.60

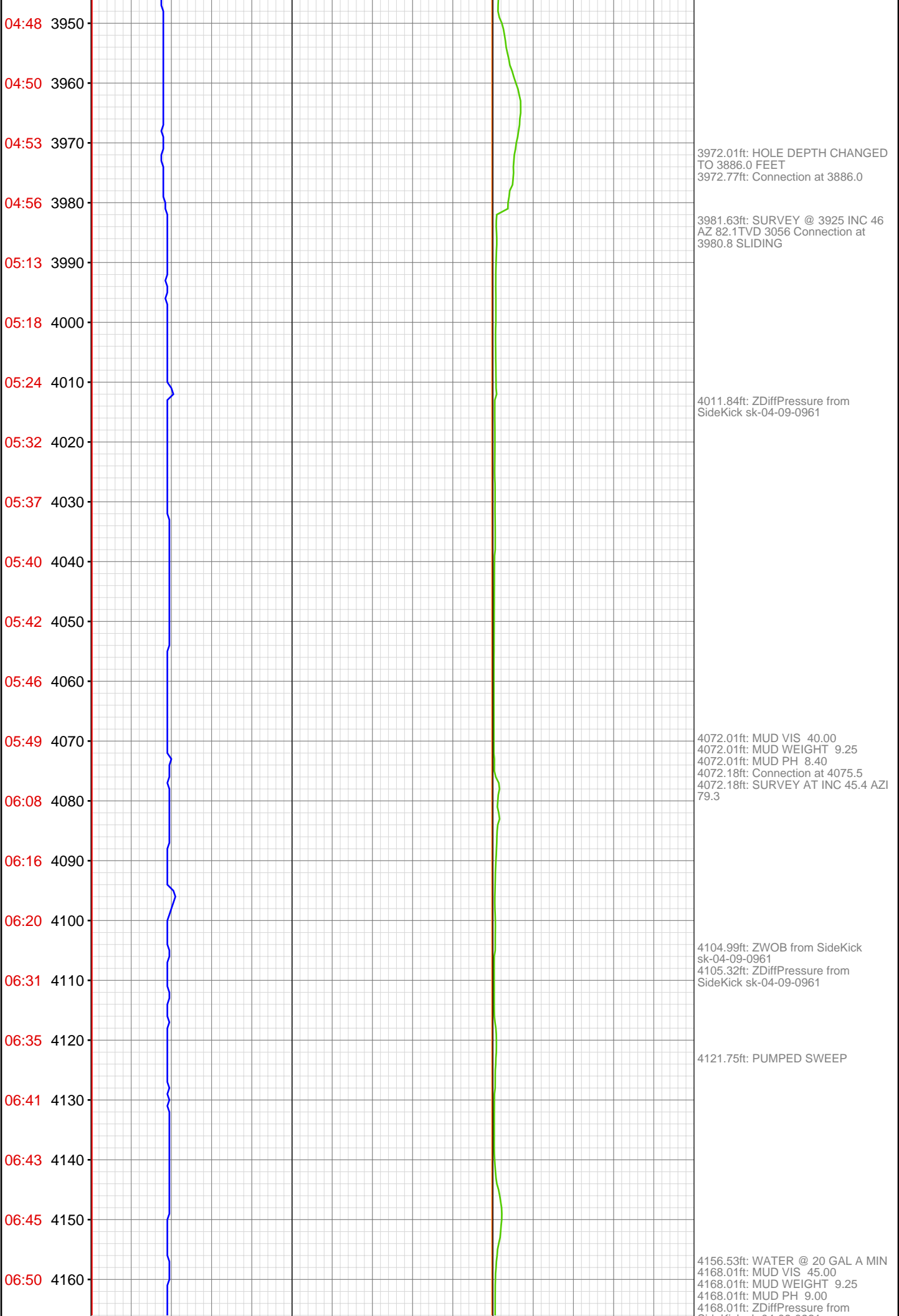
3371.62ft: SURVEY @ 3262INC 46.5  
AZ 80 TVD 2616

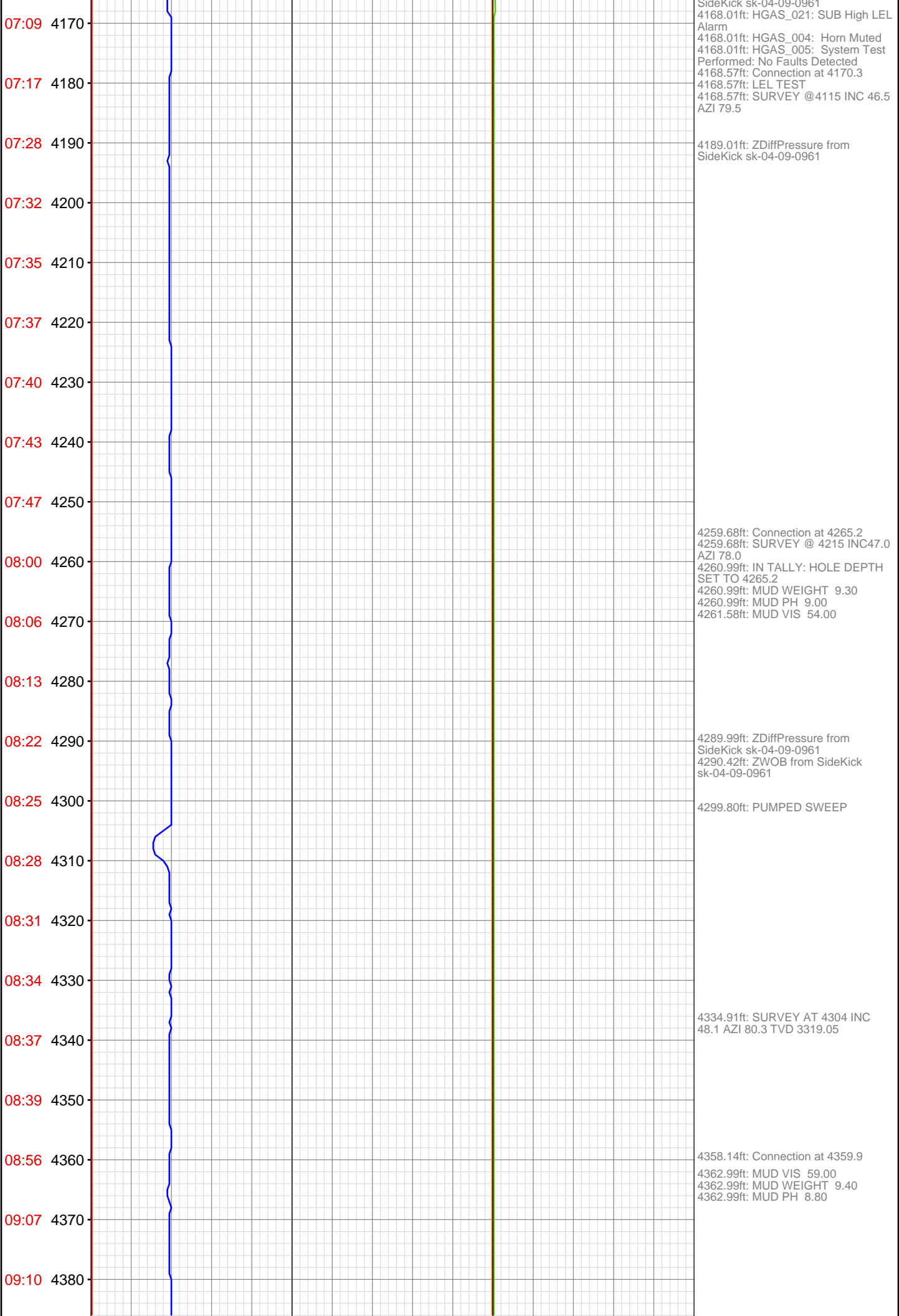
3400.98ft: HOLE DEPTH CHANGED  
TO 3317.0 FEET  
3401.77ft: Connection at 3317.3  
SLIDING PUMPED SWEEP  
ROTATING  
3413.25ft: SURVEY @ 3357 INC 47.4  
AZ 80.0 TVD 2682  
3413.25ft: Connection at 3412.0  
SLIDING  
3413.25ft: BIT DEPTH CHANGED TO  
3412.0 FEET  
3413.25ft: PUMPED SWEEP  
ROTATING

3450.98ft: MUD VIS 0.51  
3452.00ft: MUD WEIGHT 9.20  
3452.99ft: MUD PH 9.00









09:12 4390  
09:14 4400  
09:17 4410  
09:20 4420  
09:24 4430  
09:27 4440  
09:41 4450  
09:44 4460  
09:47 4470  
09:50 4480  
09:52 4490  
09:55 4500  
09:58 4510  
10:00 4520  
10:03 4530  
10:05 4540  
10:22 4550  
10:34 4560  
10:37 4570  
10:41 4580  
10:44 4590  
10:46 4600

4433.99ft: 021TGAS 05121471  
SW0.30 HW30.00 - 2 days on

4448.92ft: Connection at 4454.7  
4449.02ft: ZDiffPressure from  
SideKick sk-04-09-0961  
4449.61ft: SURVEY AT 4399 INC  
44.5 AZI 81.3 TVD 3453.24

4480.51ft: TVD CORRECTION 3384

4545.01ft: MUD VIS 59.00  
4545.01ft: MUD WEIGHT 9.40  
4545.01ft: MUD PH 9.00  
4545.01ft: IN TALLY: HOLE DEPTH  
SET TO 4549.4  
4545.74ft: Connection at 4549.4  
4550.43ft: SURVEY AT 4494 INC  
42.7 AZI 79.7 TVD 3453  
4556.99ft: ZWOB from SideKick  
sk-04-09-0961  
4556.99ft: ZDiffPressure from  
SideKick sk-04-09-0961

10:49 4610  
10:52 4620  
10:54 4630  
10:57 4640  
11:16 4650  
11:22 4660  
11:25 4670  
11:28 4680  
11:30 4690  
11:33 4700  
11:36 4710  
11:38 4720  
11:41 4730  
12:00 4740  
12:08 4750  
12:10 4760  
12:13 4770  
12:15 4780  
12:17 4790  
12:20 4800  
12:23 4810  
12:26 4820

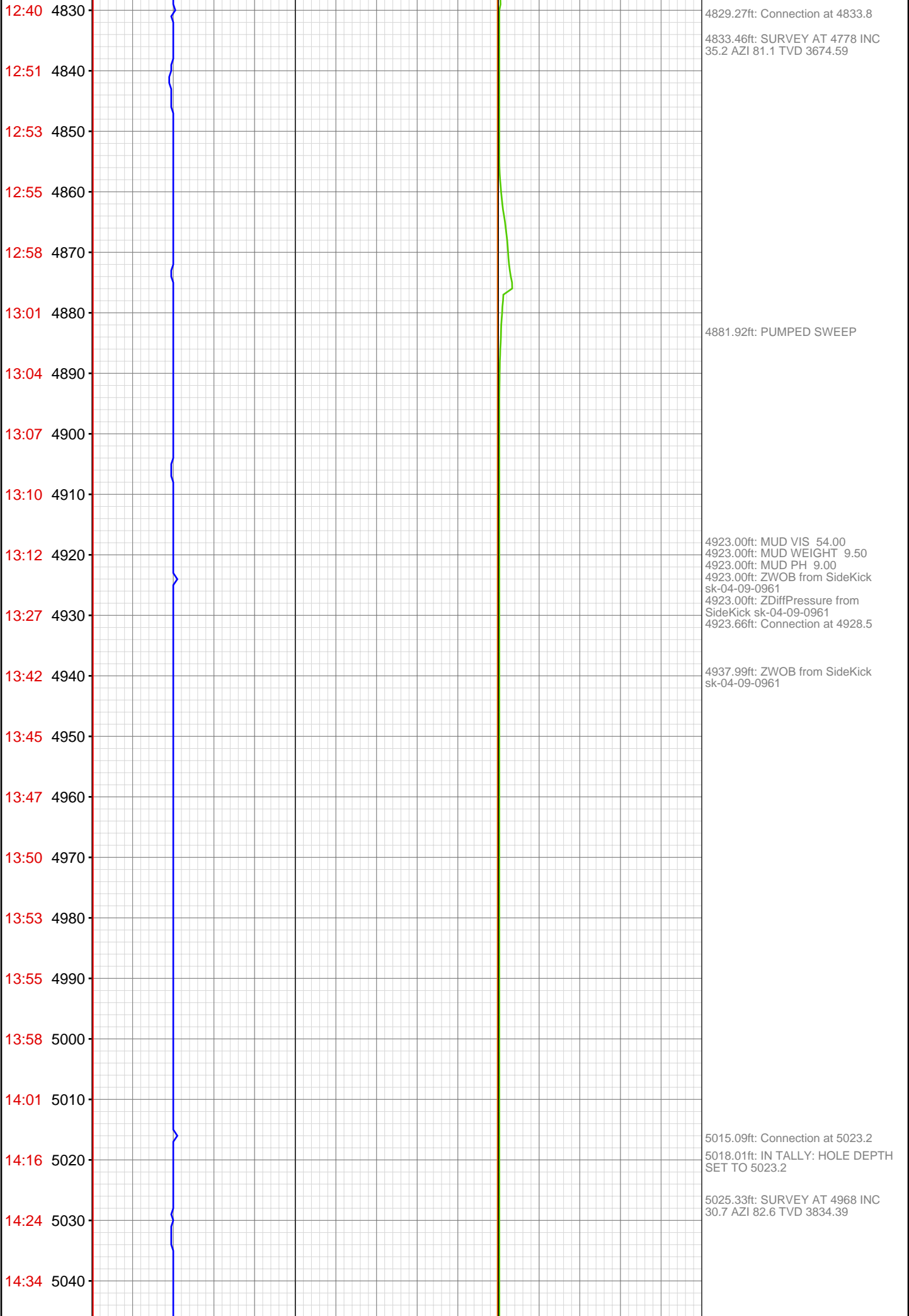


4641.99ft: MUD VIS 56.00  
4641.99ft: MUD WEIGHT 9.40  
4641.99ft: MUD PH 8.80  
4642.39ft: Connection at 4644.1  
4645.24ft: SURVEY AT 4589 INC  
40.0 AZI 82.4 TVD 3524.78

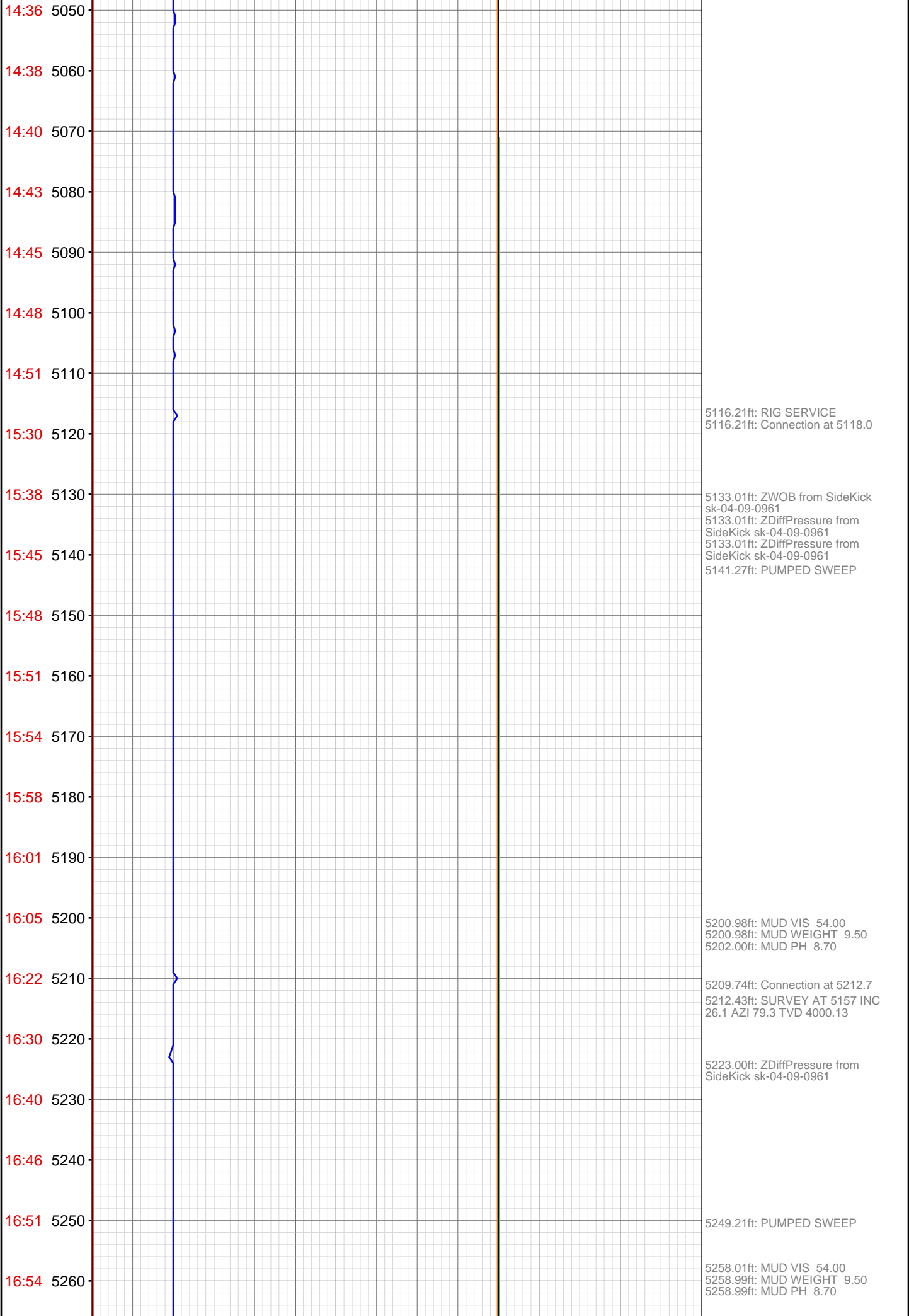
4652.00ft: ZDiffPressure from  
SideKick sk-04-09-0961

4677.13ft: PUMPED SWEEP

4737.40ft: Connection at 4739.0  
4738.85ft: SURVEY AT 4683 INC  
37.5 AZI 81.3 TVD 3598.08  
4739.01ft: MUD VIS 57.00  
4739.01ft: MUD WEIGHT 9.50  
4739.01ft: MUD PH 8.70  
4745.01ft: ZDiffPressure from  
SideKick sk-04-09-0961







16:58 5270  
17:01 5280  
17:04 5290  
17:06 5300  
17:23 5310  
17:30 5320  
17:39 5330  
17:41 5340  
17:43 5350  
17:46 5360  
17:48 5370  
17:51 5380  
17:53 5390  
17:55 5400  
18:04 5410  
18:04 5420  
18:05 5430  
18:24 5490  
19:14 5500  
19:22 5510  
19:24 5520  
19:26 5530

5304.00ft: IN TALLY: HOLE DEPTH  
SET TO 5307.5  
5304.79ft: Connection at 5307.5  
5304.79ft: SURVEY AT 5252 INC  
23.9 AZI 81.7 TVD 4086.22

5487.01ft: MUD VIS 0.47  
5487.01ft: MUD WEIGHT 9.45  
5487.01ft: MUD PH 8.80  
5489.57ft: SURVEY @ 5347 INC 20.7  
AZ 77.8 TVD 4174  
5493.27ft: Connection at 5402.3  
SLIDING  
5496.26ft: SLIDING

5506.99ft: MUD WEIGHT 9.45  
5506.99ft: MUD PH 8.70  
5507.12ft: MUD VIS 0.48  
5509.84ft: ROTATING

5519.98ft: PUMPED SWEEP

19:28 5540  
19:32 5550  
19:36 5560  
19:38 5570  
19:41 5580  
19:59 5590  
20:10 5600  
20:14 5610  
20:17 5620  
20:20 5630  
20:24 5640  
20:28 5650  
20:30 5660  
20:34 5670  
20:38 5680  
20:57 5690  
21:06 5700  
21:09 5710  
21:12 5720  
21:15 5730  
21:19 5740  
21:21 5750



5586.78ft: SURVEY @ 5441 INC 16.3  
AZ 80.1 TVD 4262  
5586.78ft: Connection at 5496.9  
5587.01ft: HOLE DEPTH CHANGED  
TO 5496.0 FEET  
5592.49ft: SLIDING  
5594.00ft: MUD VIS 0.49  
5594.00ft: MUD WEIGHT 9.40  
5594.00ft: MUD PH 8.70

5624.25ft: SURVEY @ 5536 INC 14  
AZ 74.5 TVD 4354  
5629.99ft: HGAS\_021: SUB High LEL  
Alarm  
5631.00ft: HGAS\_004: Horn Muted

5681.00ft: HOLE DEPTH CHANGED  
TO 5591.0 FEET  
5681.14ft: Connection at 5591.7  
5686.12ft: SURVEY @ 5631 INC 11.1  
AZ 78.2 TVD 4447  
5686.12ft: Connection at 5686.5  
SLIDING

5698.43ft: ROTATING

5733.99ft: MUD VIS 0.51  
5733.99ft: MUD WEIGHT 9.40  
5735.01ft: MUD PH 0.90  
5735.01ft: MUD PH 9.00

21:25 5760  
21:28 5770  
21:51 5780  
21:59 5790  
22:07 5800  
22:10 5810  
22:13 5820  
22:17 5830  
22:22 5840  
22:26 5850  
22:30 5860  
22:35 5870  
22:59 5880  
23:07 5890  
23:17 5900  
23:20 5910  
23:24 5920  
23:30 5930  
23:34 5940  
23:37 5950  
23:42 5960  
23:47 5970

Dec 22, 2010

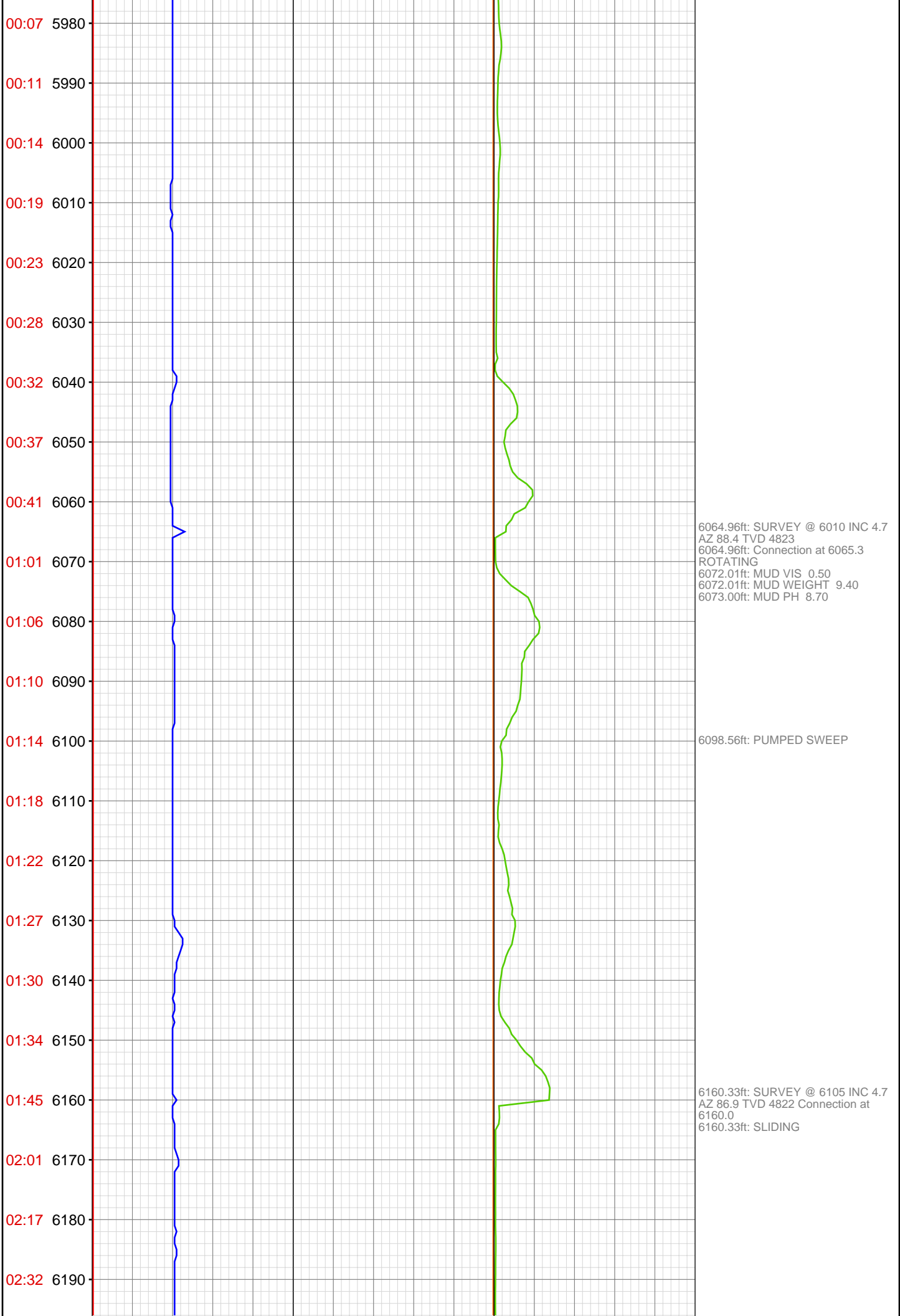
5780.97ft: Connection at 5781.1  
SLIDING  
5780.97ft: SURVEY @ 5726 INC 8.8  
AZ 74.9 TVD 4540

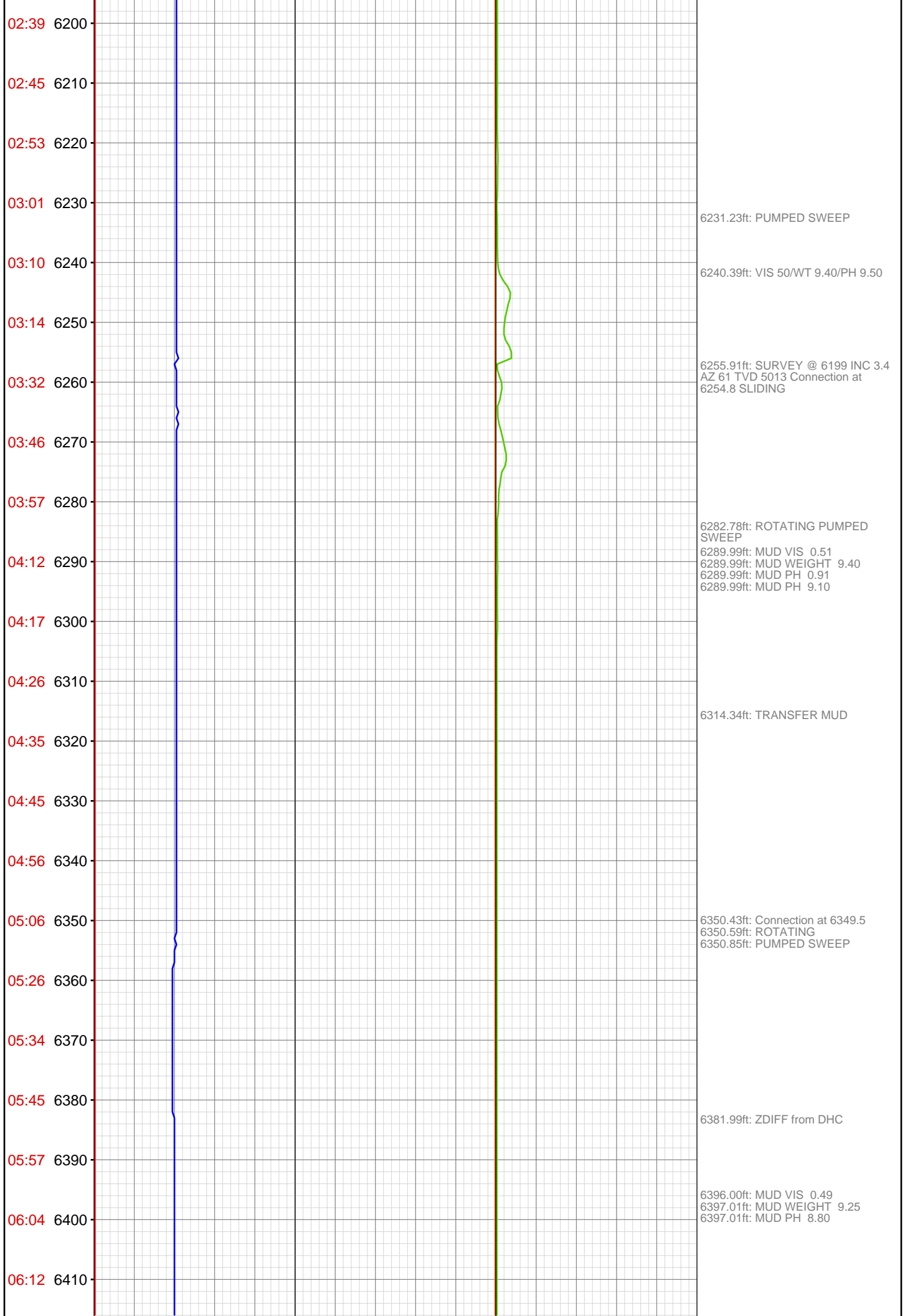
5805.48ft: ROTATING  
5810.30ft: MUD VIS 0.52  
5810.99ft: MUD WEIGHT 9.40  
5810.99ft: MUD PH 8.70

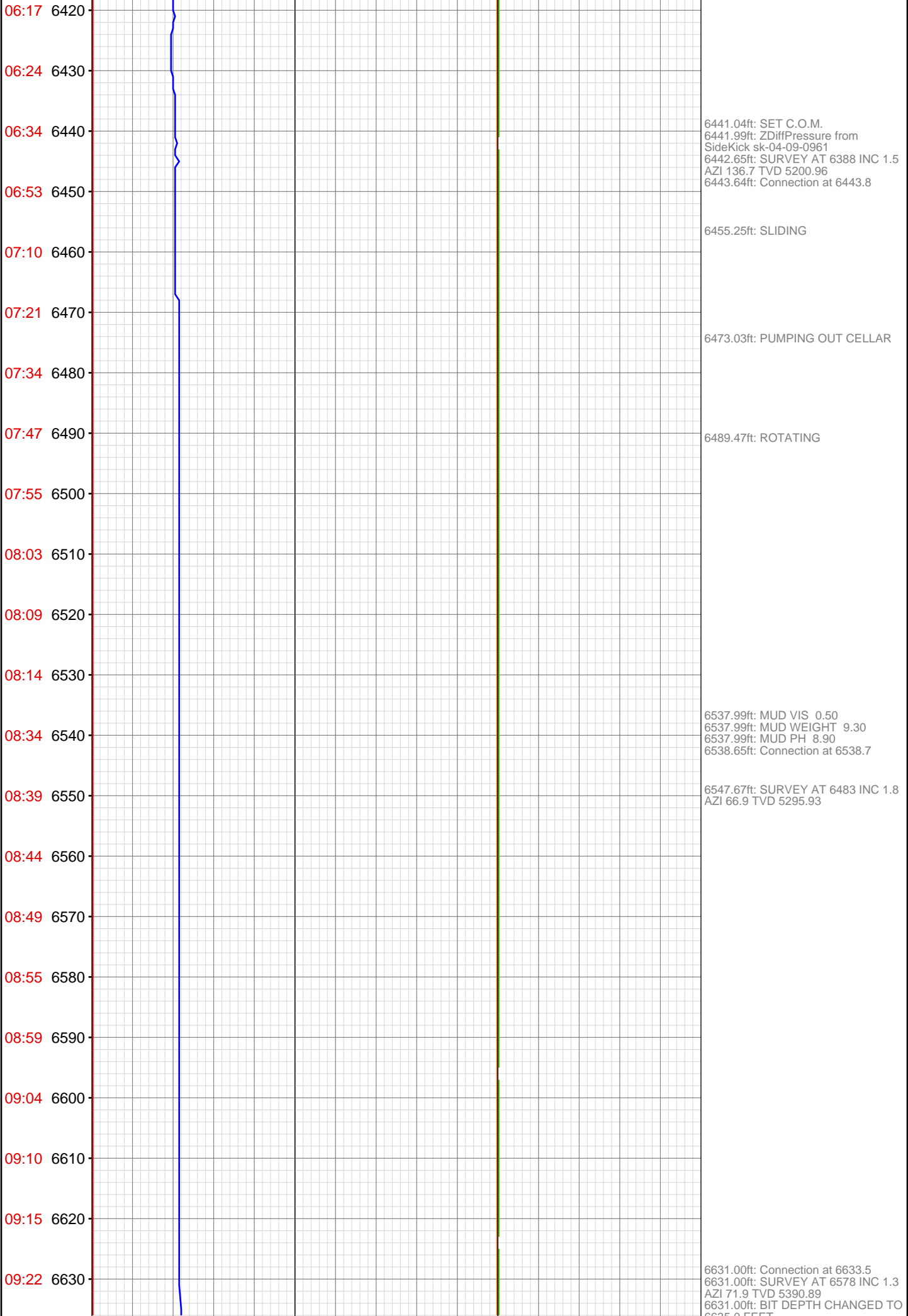
5828.08ft: PUMPED SWEEP

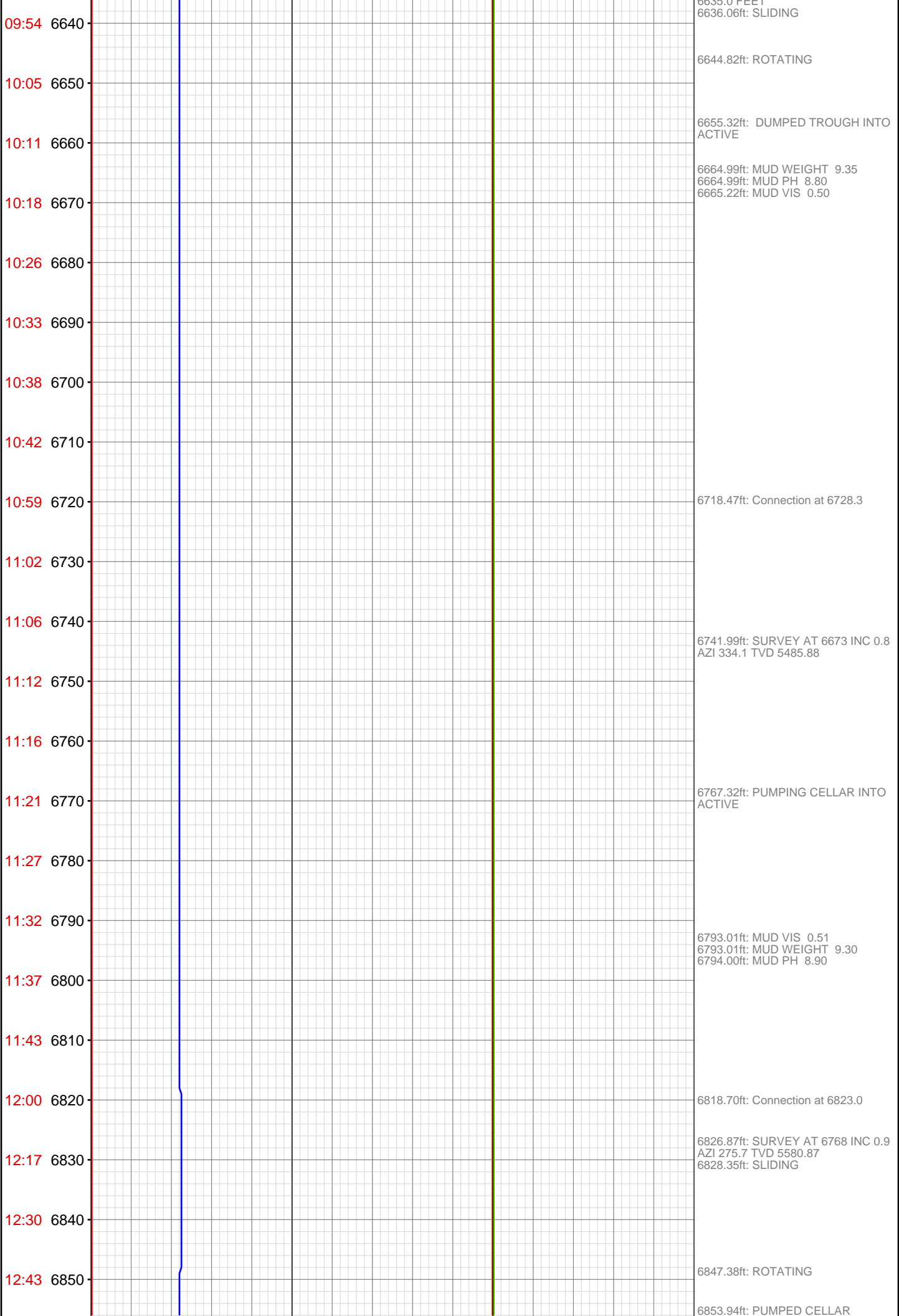
5875.79ft: SURVEY @ 5820 INC 6.2  
AZ 70.9 TVD 4634  
5875.79ft: Connection at 5875.9  
SLIDING

5970.18ft: Connection at 5970.6  
ROTATING  
5970.18ft: SURVEY @ 5915 INC 4.9  
AZ 87.6 TVD 4728

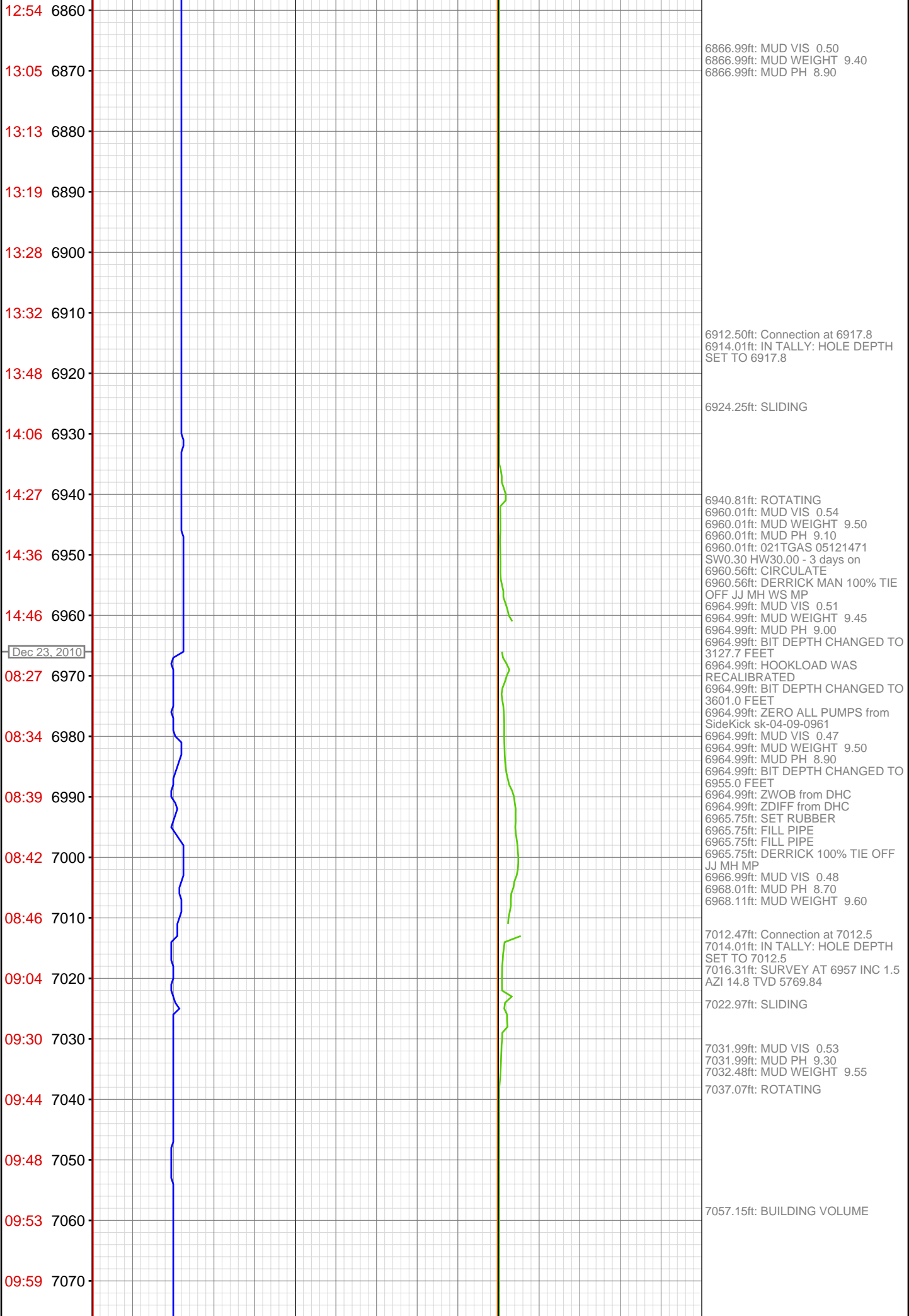












10:06 7080  
10:12 7090  
10:17 7100  
10:43 7110  
10:57 7120  
11:10 7130  
11:16 7140  
11:21 7150  
11:25 7160  
11:38 7170  
11:43 7180  
11:48 7190  
12:01 7200  
12:13 7210  
12:41 7220  
12:55 7230  
13:01 7240  
13:06 7250  
13:11 7260  
13:18 7270  
13:24 7280  
13:30 7290

7104.89ft: Connection at 7107.3  
7104.89ft: TVD 5864.81  
7104.89ft: SYRVEY@7052 INC.1.5  
AZM.9.5  
7106.50ft: SLIDING  
7110.01ft: MUD VIS 0.55  
7110.01ft: MUD WEIGHT 9.60  
7110.01ft: MUD PH 8.90

7125.30ft: ROTATING

7169.00ft: MUD PH 9.10  
7169.26ft: CHECK SHOT SURVEY  
7169.26ft: MUD VIS 0.52  
7169.26ft: MUD WEIGHT 9.60

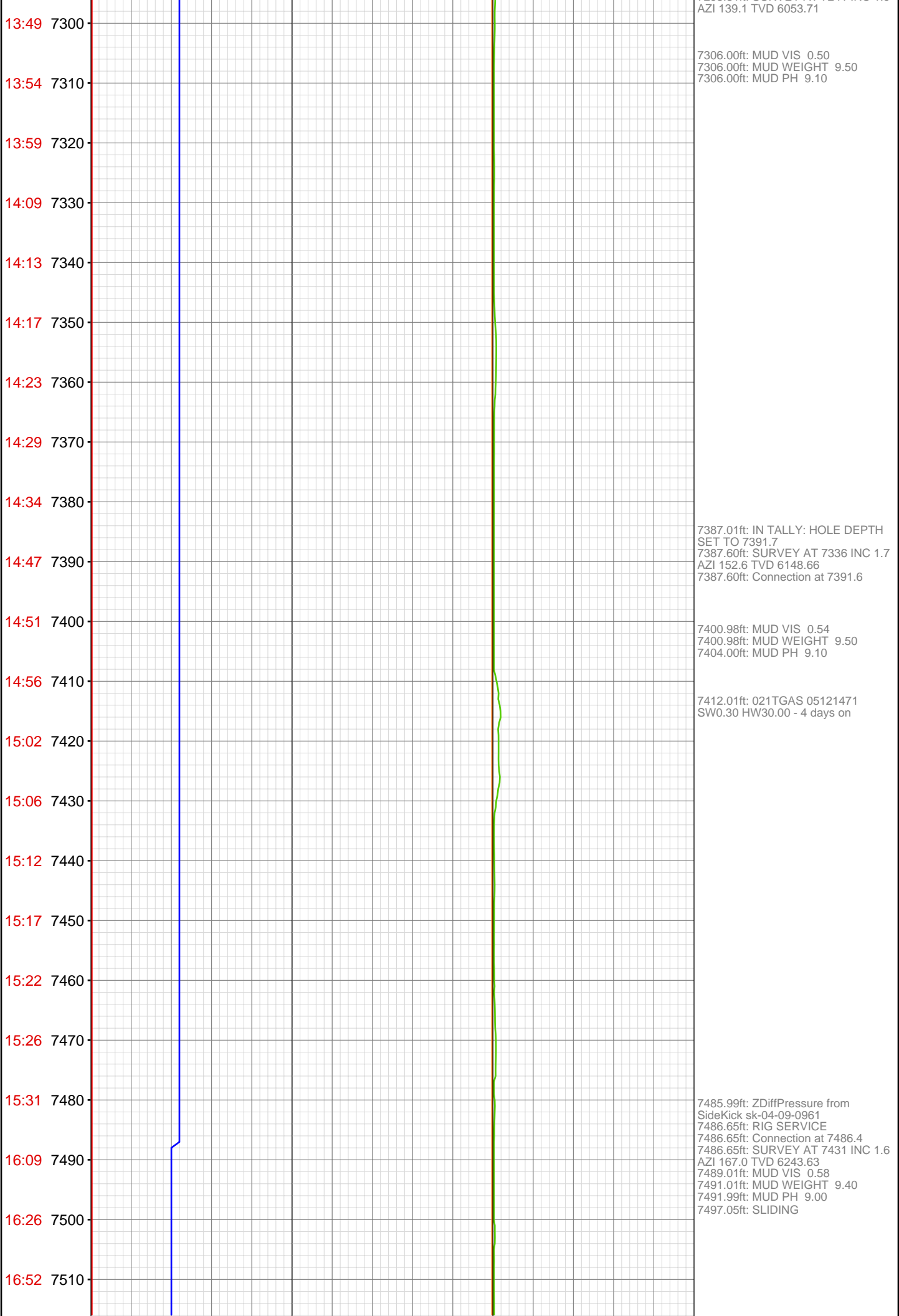
7199.18ft: TVD 5958.76  
7201.64ft: Connection at 7202.0  
SURVEY@ 7146 INC.2.4 AZM.72.5

7207.38ft: SLIDING

7214.99ft: MUD VIS 0.50  
7214.99ft: MUD WEIGHT 9.50  
7214.99ft: MUD PH 8.80

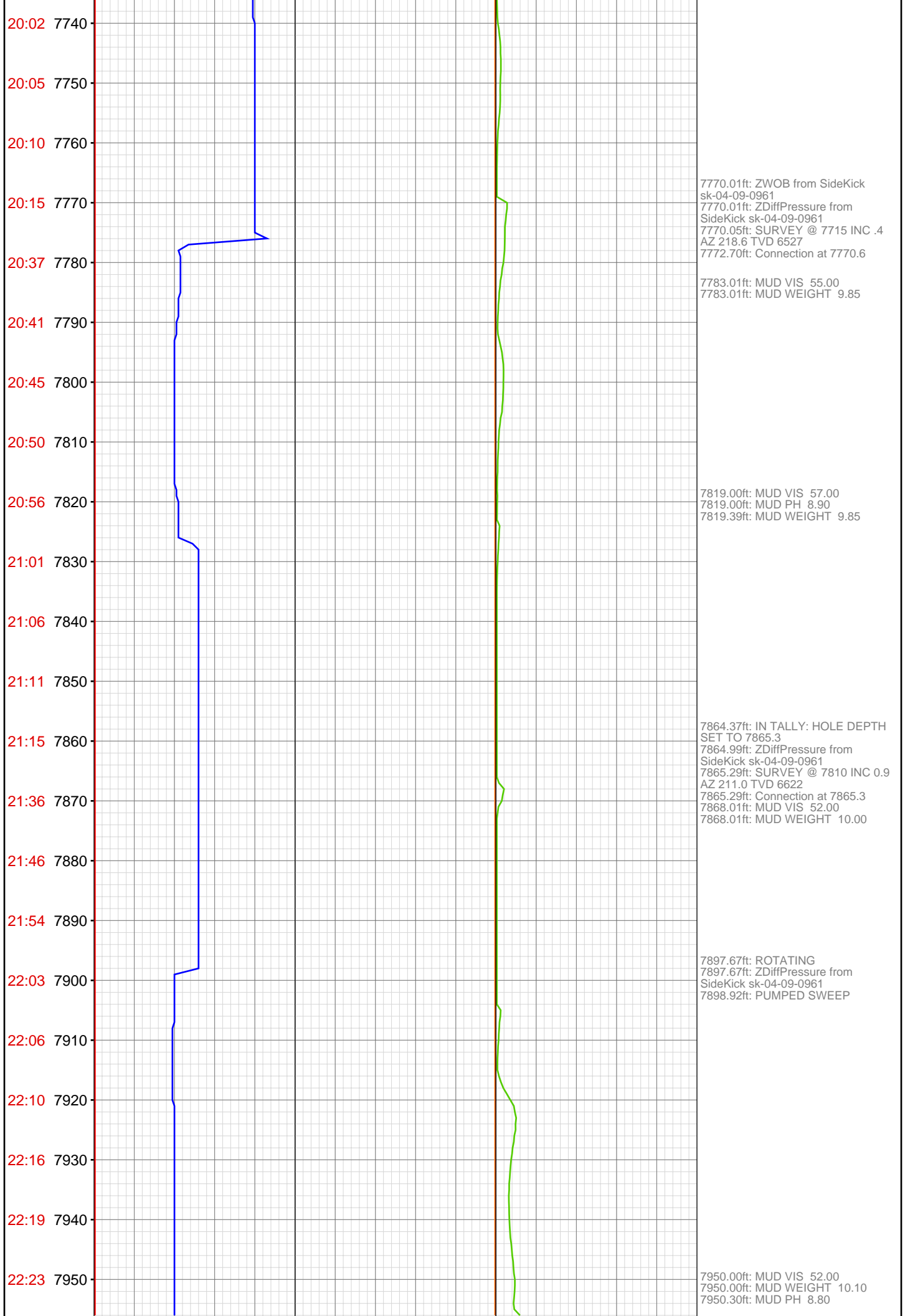
7223.88ft: ROTATING

7293.31ft: Connection at 7296.8  
7293.31ft: SURVEY AT 7241 INC 1.9



17:05 7520  
17:20 7530  
17:27 7540  
17:32 7550  
17:42 7560  
17:47 7570  
18:34 7580  
18:38 7590  
18:42 7600  
18:47 7610  
18:52 7620  
18:58 7630  
19:04 7640  
19:08 7650  
19:13 7660  
19:18 7670  
19:34 7680  
19:38 7690  
19:43 7700  
19:48 7710  
19:53 7720  
19:58 7730

7522.74ft: ROTATING  
7526.21ft: SPR's MUD PH 8.9  
7528.54ft: MUD VIS 54  
7530.64ft: MUD WT 9.5  
  
7579.99ft: ZWOB from SideKick  
sk-04-09-0961  
7579.99ft: ZDiffPressure from  
SideKick sk-04-09-0961  
7579.99ft: MUD VIS 51.00  
7579.99ft: MUD PH 8.80  
7579.99ft: MUD WEIGHT 9.50  
7580.54ft: Connection at 7581.2  
7580.54ft: FLOW CHECK  
7580.54ft: SURVEY @ 7526 INC .6  
AZ 219.6 TVD 6338  
  
7641.99ft: MUD WEIGHT 9.70  
7642.95ft: MUD VIS 52.00  
  
7673.00ft: IN TALLY: HOLE DEPTH  
SET TO 7675.9  
7675.89ft: Connection at 7675.9  
7675.89ft: SURVEY @ 7620 INC .5  
AZ 206.5 TVD 6433  
7680.77ft: PUMPED SWEEP  
  
7696.00ft: MUD VIS 52.00  
7696.00ft: MUD WEIGHT 9.75



22:40 7960  
22:47 7970  
22:56 7980  
23:02 7990  
23:08 8000  
23:12 8010  
23:16 8020  
23:21 8030  
23:25 8040  
23:30 8050  
23:50 8060  
~~23:50 8070~~  
00:06 8080  
00:10 8090  
00:14 8100  
00:19 8110  
00:24 8120  
00:28 8130  
00:33 8140  
00:49 8150  
01:13 8160  
01:22 8170

Dec 24, 2010

7959.19ft: Connection at 7959.9  
7959.19ft: SURVEY @ 7904 INC 1.0  
AZ 5.8 TVD 6717

7983.01ft: MUD VIS 51.00  
7983.99ft: MUD WEIGHT 10.10

8052.99ft: ZWOB from SideKick  
sk-04-09-0961  
8052.99ft: ZWOB from SideKick  
sk-04-09-0961  
8053.48ft: SURVEY @ 7999 INC 0.2  
AZ 296.0 TVD 6811  
8053.48ft: Connection at 8054.6

8077.99ft: MUD VIS 54.00  
8077.99ft: MUD WEIGHT 10.10

8147.01ft: IN TALLY: HOLE DEPTH  
SET TO 8149.3  
8149.28ft: SURVEY @ 8094 INC 0.6  
AZ 229.3 TVD 6906  
8149.28ft: Connection at 8149.3  
8152.99ft: MUD VIS 55.00  
8152.99ft: MUD WEIGHT 10.15  
8152.99ft: MUD PH 9.00

01:34 8180  
01:44 8190  
01:47 8200  
01:51 8210  
01:54 8220  
02:00 8230  
02:04 8240  
02:26 8250  
02:31 8260  
02:35 8270  
02:40 8280  
02:44 8290  
02:48 8300  
02:53 8310  
03:02 8320  
03:15 8330  
03:34 8340  
03:46 8350  
03:53 8360  
04:03 8370  
04:07 8380  
04:12 8390

8183.01ft: ZDiffPressure from  
SideKick sk-04-09-0961  
8183.01ft: ZDiffPressure from  
SideKick sk-04-09-0961  
8184.06ft: ROTATING  
8187.20ft: PUMPED SWEEP

8243.01ft: ZDiffPressure from  
SideKick sk-04-09-0961  
8243.01ft: ZWOB from DHC  
8243.80ft: SURVEY @ 8189 INC 0.3  
AZ 294.2 TVD 7001  
8244.91ft: Connection at 8244.0

8323.00ft: MUD VIS 58.00  
8323.00ft: MUD WEIGHT 10.20  
8323.00ft: MUD PH 9.00

8336.84ft: IN TALLY: HOLE DEPTH  
SET TO 8338.8  
8338.75ft: Connection at 8338.8  
8338.75ft: SURVEY @ 8283 INC 1.1  
AZ 238.2 TVD 7095  
8338.75ft: ZDiffPressure from  
SideKick sk-04-09-0961

8364.83ft: ROTATING

