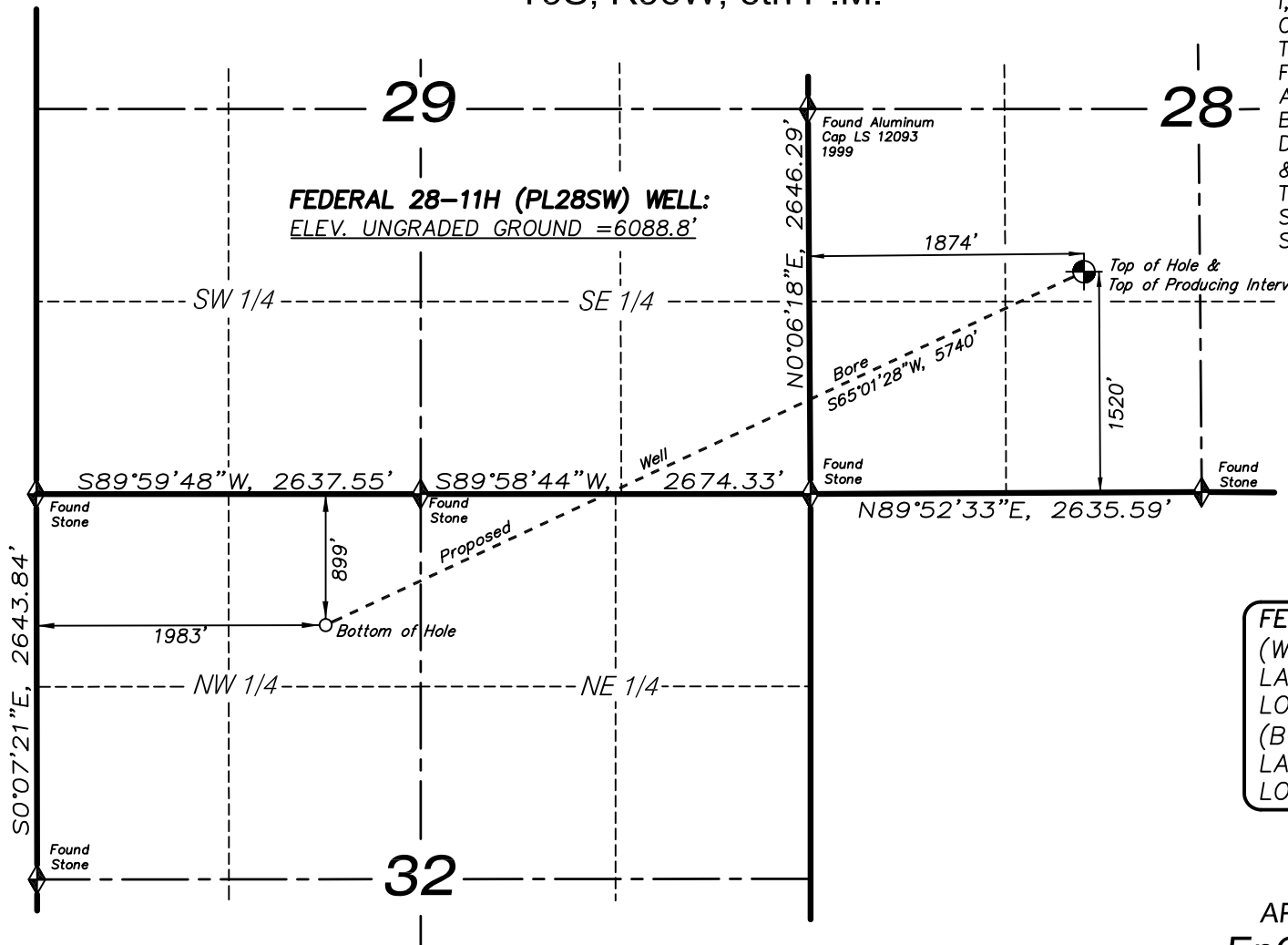
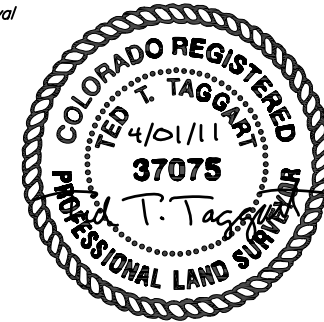
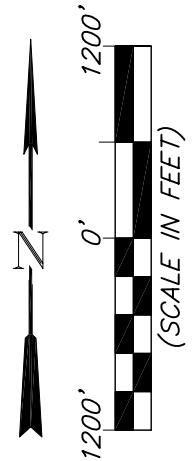


T9S, R96W, 6th P.M.



# CERTIFICATE OF SURVEYOR

I, TED TAGGART OF FRUITA, COLORADO HEREBY CERTIFY THAT THIS MAP WAS MADE FROM NOTES TAKEN DURING AN ACTUAL SURVEY MADE BY ME OR UNDER MY DIRECTION FOR ENCANA OIL & GAS (USA) INC. AND THAT THIS LOCATION HAS BEEN STAKED ON THE GROUND AS SHOWN HEREON.



**FEDERAL 28-11H WELL (PL28SW)**  
(WELLHEAD LOCATION) NAD 83  
LATITUDE = 39.243207° N  
LONGITUDE = 108.112173° W  
(BOTTOM HOLE LOCATION) NAD 83  
LATITUDE = 39.236555° N  
LONGITUDE = 108.130537° W

MAP to ACCOMPANY  
APPLICATION for PERMIT to DRILL  
**EnCana Oil & Gas (USA) Inc.**  
**Federal 28-11H (PL28SW) Well**

NE1/4 SW1/4, SECTION 28  
T9S, R96W, 6th P.M.  
MESA COUNTY, COLORADO

## LEGEND

- ◆ SECTION CORNER LOCATED
- ⊙ SURFACE LOCATION
- BOTTOM HOLE LOCATION
- ▣ RECORD LOCATION OF CORNER

## NOTES

1. WELL FOOTAGES ARE MEASURED AT RIGHT ANGLES TO SECTION LINES.
2. BASIS OF BEARING: GEODETIC- BASED ON GPS OBSERVATIONS.
3. ELEVATIONS BASED ON GPS OBSERVATIONS, NAVD 88 (GEOID 03), POST PROCESSED USING NGS OPUS.
4. SEE ADDENDUM TO LEGAL PLAT (SHEET 1a) FOR VISIBLE IMPROVEMENTS WITHIN 400 FEET OF THE PROPOSED OIL & GAS LOCATION.
5. CONTROL FOR SURVEY WAS ESTABLISHED USING DIFFERENTIALLY CORRECTED GPS FROM AN OPUS BASED CONTROL NETWORK. WELL LOCATION WAS ESTABLISHED USING NON-GPS CONVENTIONAL METHODS, THEREFORE NO PDOP READING WAS TAKEN.



906 Main Street  
Evanston, Wyoming 82930  
Phone No. (307) 789-4545

Location Plat		Scale: 1" = 1200'	SHEET <b>1</b> OF 10
Project No.	09-04-32	Date Surveyed: 7/09/09	
Date Drawn: 7/29/09		Latest Revision Date: 4/01/11	