
CHEVRON - MID-CONTINENT EBIZ

**SKR 598-36-AV-01
SKINNER RIDGE
Garfield County , Colorado**

Cement Production Casing

08-Sep-2008

Job Site Documents

The Road to Excellence Starts with Safety

Sold To #: 338668	Ship To #: 2666586	Quote #:	Sales Order #: 6157817
Customer: CHEVRON - MID-CONTINENT EBIZ	Customer Rep: MORGAN, RANDY		
Well Name: SKR	Well #: 598-36-AV-01	API/UWI #: 05-045-16289	
Field: SKINNER RIDGE	City (SAP): PARACHUTE	County/Parish: Garfield	State: Colorado
Lat: N 39.573 deg. OR N 39 deg. 34 min. 21.31 secs.	Long: W 108.34 deg. OR W -109 deg. 39 min. 35.244 secs.		
Contractor: H&P	Rig/Platform Name/Num: H&P 318		
Job Purpose: Cement Production Casing			
Well Type: Development Well	Job Type: Cement Production Casing		
Sales Person: HARTLEY, RICHARD	Srvc Supervisor: HAYES, DIRK	MBU ID Emp #: 336768	

Job Personnel

HES Emp Name	Exp Hrs	Emp #	HES Emp Name	Exp Hrs	Emp #	HES Emp Name	Exp Hrs	Emp #
EDWARDS, RICHARD Delbert	6.0	380448	HAYES, DIRK A	6.0	336768	LITTLE, FRANK	6.0	448361
MUHLESTEIN, RYAN	6.0	453609	SHAHNOOSHI, ALIREZA Faroooshani	6.0	391960	ZUMWALT, ORVILLE Raymond	6.0	398157

Equipment

HES Unit #	Distance-1 way	HES Unit #	Distance-1 way	HES Unit #	Distance-1 way	HES Unit #	Distance-1 way
10055148	120 mile	10240238C	120 mile	10565341	120 mile	10616651C	120 mile
10719775	120 mile	10741109	120 mile	10867425	120 mile	10897891	120 mile
10973565	120 mile						

Job Hours

Date	On Location Hours	Operating Hours	Date	On Location Hours	Operating Hours	Date	On Location Hours	Operating Hours
09-08-08	6	2						
TOTAL			Total is the sum of each column separately					

Job

Formation Name	Formation Depth (MD)	Top	Bottom	Form Type	Job depth MD	Water Depth	Perforation Depth (MD)	From	To
				BHST	6300. ft				
					Job Depth TVD	5. ft			
					Wk Ht Above Floor				

Job Times

Date	Time	Time Zone
08 - Sep - 2008	08:00	MST
08 - Sep - 2008	13:00	MST
08 - Sep - 2008	18:56	MST
08 - Sep - 2008	20:13	MST
08 - Sep - 2008	22:00	MST

Well Data

Description	New / Used	Max pressure psig	Size in	ID in	Weight lbm/ft	Thread	Grade	Top MD ft	Bottom MD ft	Top TVD ft	Bottom TVD ft
Open Hole				7.875				1430.	6300.	.	6300.
Production Casing	Used		4.5	4.	11.6				6280.	.	6280.

Sales/Rental/3rd Party (HES)

Description	Qty	Qty uom	Depth	Supplier
PLUG,CMTG,TOP,4 1/2,HWE,3.65 MIN/4.14 MA	1	EA		
PORT. DAS W/CEMWIN;ACQUIRE W/HES, ZI	1	JOB		
ADC (AUTO DENSITY CTRL) SYS, /JOB,ZI	1	JOB		

Tools and Accessories

Type	Size	Qty	Make	Depth	Type	Size	Qty	Make	Depth	Type	Size	Qty	Make
Guide Shoe					Packer					Top Plug		1	
Float Shoe					Bridge Plug					Bottom Plug			
Float Collar					Retainer					SSR plug set			
Insert Float										Plug Container		1	
Stage Tool										Centralizers			

Miscellaneous Materials												
Gelling Agt		Conc		Surfactant		Conc		Acid Type		Qty		Conc %
Treatment Fld		Conc		Inhibitor		Conc		Sand Type		Size		Qty
Fluid Data												
Stage/Plug #: 1												
Fluid #	Stage Type	Fluid Name			Qty	Qty uom	Mixing Density lbm/gal	Yield ft ³ /sk	Mix Fluid Gal/sk	Rate bbl/min	Total Mix Fluid Gal/sk	
1	SPACER	FRESH H2O / GREEN DYE / POLYFLAKE			50.0	bbl	8.4	.0	.0	.0		
2	Lead Cement	VARICEM (TM) CEMENT (452009)			280.0	sacks	12.8	1.55	7.15			
3	Tail Cement	VARICEM (TM) CEMENT (452009)			640.0	sacks	13.2	1.43	6.19			
4	2% KCL DISPLACEMENT	FRESH H2O			96.6	bbl	.	8.5	.0	.0		
Calculated Values		Pressures			Volumes							
Displacement	96.6	Shut In: Instant			Lost Returns	NO	Cement Slurry	246	Pad			
Top Of Cement	????	5 Min			Cement Returns	NO	Actual Displacement	94.4	Treatment			
Frac Gradient		15 Min			Spacers	50	Load and Breakdown		Total Job			
Rates												
Circulating		Mixing		7	Displacement		10	Avg. Job		8.5		
Cement Left In Pipe	Amount	48.48 ft	Reason	Shoe Joint								
Frac Ring # 1 @	ID		Frac ring # 2 @	ID		Frac Ring # 3 @	ID		Frac Ring # 4 @	ID		
The Information Stated Herein Is Correct					Customer Representative Signature							

The Road to Excellence Starts with Safety

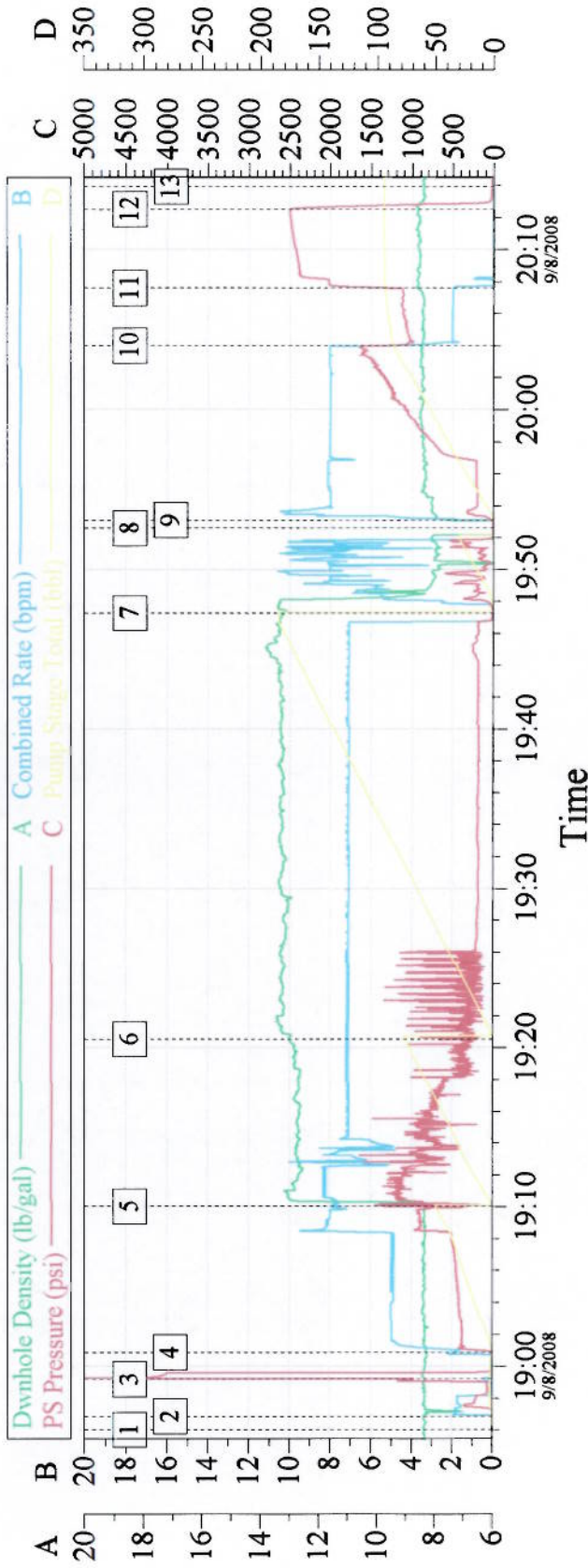
Sold To #: 338668		Ship To #: 2666586		Quote #:		Sales Order #: 6157817	
Customer: CHEVRON - MID-CONTINENT EBIZ				Customer Rep: MORGAN, RANDY			
Well Name: SKR			Well #: 598-36-AV-01			API/UWI #: 05-045-16289	
Field: SKINNER RIDGE		City (SAP): PARACHUTE		County/Parish: Garfield		State: Colorado	
Legal Description:							
Lat: N 39.573 deg. OR N 39 deg. 34 min. 21.31 secs.				Long: W 108.34 deg. OR W -109 deg. 39 min. 35.244 secs.			
Contractor: H&P			Rig/Platform Name/Num: H&P 318				
Job Purpose: Cement Production Casing						Ticket Amount:	
Well Type: Development Well			Job Type: Cement Production Casing				
Sales Person: HARTLEY, RICHARD			Srvc Supervisor: HAYES, DIRK			MBU ID Emp #: 336768	

Activity Description	Date/Time	Cht #	Rate bbl/ min	Volume bbl		Pressure psig		Comments
				Stage	Total	Tubing	Casing	
Call Out	09/08/2008 08:00							
Crew Leave Yard	09/08/2008 10:00							
Arrive at Location from Service Center	09/08/2008 13:00							
Assessment Of Location Safety Meeting	09/08/2008 13:30							
Other	09/08/2008 14:00							ARRIVE ON LOCATION SEPT 08, 2008 @ 13:00 RIG STILL RUNNING CASING APPROX 100 JOINTS TO RUN
Safety Meeting - Pre Rig-Up	09/08/2008 18:00							
Safety Meeting - Pre Job	09/08/2008 18:45							
Start Job	09/08/2008 18:56							TD 6300, TP 6280, SHOE 46.37, MUD 10.0
Prime Pumps	09/08/2008 18:57		2		2		340.0	PUMP 2 BBLS AHEAD TO PRIME LINES
Test Lines	09/08/2008 18:59		0.5		0.5		4000. 0	
Pump Spacer	09/08/2008 19:00		8		50		440.0	PUMP 50 BBL WATER SPACER WITH THE FIRST 30 FRESH H2O AND THE LAST 20 BBLS WITH POLYFLAKE AND GREEN DYE
Pump Lead Cement	09/08/2008 19:10		7		77.3		1209. 0	280 SKS @ 12.8 YIELD 1.55 W/R 7.15
Pump Tail Cement	09/08/2008 19:20		7		163		869.0	640 SKS @ 13.2 YIELD 1.43 W/R 6.19

Cementing Job Log

Activity Description	Date/Time	Cht #	Rate bbl/min	Volume bbl		Pressure psig		Comments
				Stage	Total	Tubing	Casing	
Shutdown	09/08/2008 19:47							
Clean Lines	09/08/2008 19:48				20			CLEAN PUMPS AND LINES BEFORE DROPPING TOP PLUG
Drop Top Plug	09/08/2008 19:52							
Pump Displacement	09/08/2008 19:53		10		96.6		1703.0	PUMP FRESH H2O WITH 2% KCL MIXED ON DISPLACEMENT
Slow Rate	09/08/2008 20:04		2		86		1145.0	SLOW RATE LAST 10 BBLS A MIN TO 2 BBLS PER MIN PER COMPANY MAN
Bump Plug	09/08/2008 20:07		2		96.6		2313.0	HOLD PRESSURE FOR 5 MIN PER COMPANY MAN
Check Floats	09/08/2008 20:12							FLOATS HELD
End Job	09/08/2008 20:13							
Other	09/08/2008 20:14							GOOD RETURNS DURING JOB, CIRCLATED 1 HOUR PRIOR TO CEMENT JOB
Other	09/08/2008 20:15							WHEN PUMPING TAIL CEMENT BBL COUNTER SHOWED 170 BBLS AWAY AND COMPANY MAN SAID TO PUMP AWAY WHAT WAS IN TUB AND SHUT DOWN
Other	09/08/2008 20:16							THANK YOU FROM HALLIBURTON DIRK HAYES AND CREW

4 1/2" PRODUCTION



Event Log

1	start job	18:56:03	2	pump 2 bbls ahead to prime lines	18:56:53
3	test lines	18:59:13	4	pump spacer / dye / polyflake	19:00:53
5	pump lead cement	19:10:02	6	pump tail cement	19:20:32
7	shut down / wash lines	19:47:16	8	drop top plug	19:52:36
9	pump displacement	19:53:06	10	slow rate	20:04:01
11	bump top plug	20:07:36	12	check floats	20:12:30
13	end job	20:13:55			

Customer: Chevron
Truck # Elite # 4
Cementor Dirk Hayes

Job Date: 09-08-08
Operator Rick Edwards
Co Rep Randy Morgan

Ticket #: 6157817
ADC USED YES
Lease skr 598-36-av-01

CemWin v1.7.2
08-Sep-08 20:44

Field Ticket

Field Ticket Number: 6157817

Field Ticket Date: Monday, September 08, 2008

Bill To:

CHEVRON *E-Procurement
11111 S WILCREST DR - DO NOT MAIL
HOUSTON, TX 77099-4310

Job Name:

SKR 598-36-AV-01

Order Type:

Streamline Order (ZOH)

Well Name:

SKR 598-36-AV-01

Company Code:

1100

Customer PO No.:

NA

Shipping Point:

Grand Junction, CO, USA

Sales Office:

Rocky Mountains BD

Well Type:

Gas

Well Category:

Development

Ship To:

CHEVRON SKR-598-36-AV-01, GARFIELD
SKR-598-36-AV-01
2666586
PARACHUTE, CO 81635

Material	Description	QTY	UOM	Base Amt	Unit Amt	Gross Amount	Discount	Net Amount
7523	CMT PRODUCTION CASING BOM	1	JOB	0.00	0.00	0.00	62%	0.00
101241019	PLUG,CMTG, TOP, 4 1/2, HWE, 3.65 MIN/4.14 MA	1	EA	0.00	186.00	186.00	62%	70.68
452009	VARICEM (TM) CEMENT	280	JOB			22,499.54	62%	8,549.82
452009	VARICEM (TM) CEMENT	640	JOB			49,548.73	62%	18,828.51
97049	Red Dye	5	EA	0.00	48.95	244.75	62%	93.00
101216940	Chemical - Pol-E-Flake, 25 lb bag	10	LB	0.00	7.84	78.40	62%	29.79
100001585	CHEM-KCL POTASSIUM CHLORIDE - 50#	700	LB	0.00	1.43	1,001.00	62%	380.38
3965	HANDLE&DUMP SVC CHR, CMT&ADDITIVES,ZI	1129	CF	0.00	5.49	6,198.21	62%	2,355.32
	NUMBER OF EACH	1						
132	PORT. DAS W/CEMWIN,ACQUIRE W/HES, ZI	1	JOB	0.00	1,649.00	1,649.00	62%	626.62
	NUMBER OF DAYS	1						
139	ADC (AUTO DENSITY CTRL) SYS, /JOB,ZI	1	JOB	0.00	2,275.00	2,275.00	62%	864.50
	NUMBER OF UNITS	1						
2	MILEAGE FOR CEMENTING CREW,ZI	120	MI	0.00	5.76	691.20	62%	262.66
	Number of Units	1						
1	ZI-MILEAGE FROM NEAREST HES BASE,/UNIT	120	MI	0.00	9.79	1,174.80	62%	446.42
	Number of Units	1						
16091	ZI - PUMPING CHARGE	1	EA	0.00	7,962.00	7,962.00	62%	3,025.56
	DEPTH	6300						
	FEET/METERS (FT/M)		FT					
	Variants condition	0						