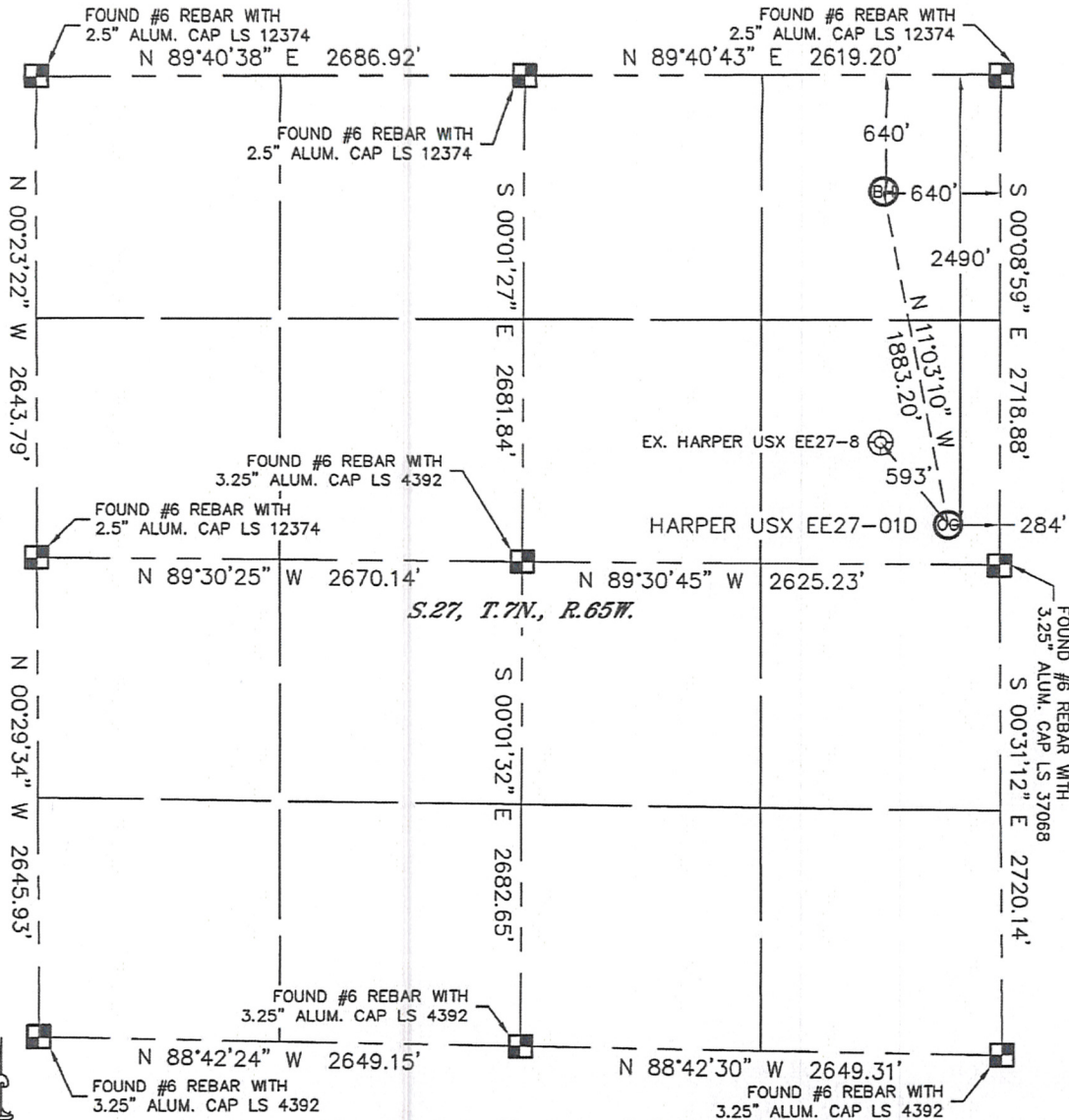


# WELL LOCATION CERTIFICATE

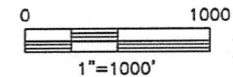
THIS MAP DOES NOT REPRESENT A BOUNDARY SURVEY

SECTION: 27  
TOWNSHIP: 7N  
RANGE: 65W



In accordance with a request from Brian Derose with Noble Energy Inc., Lat40°, Inc. has determined the surface location of the HARPER USX EE27-01D to be 2490' from the NORTH line and 284' from the EAST line and the bottom hole to be 640' from the NORTH line and 640' from the EAST line as measured at right angles from the section lines of Section 27, Township 7 North, Range 65 West of the Sixth Principal Meridian, County of Weld, State of Colorado.

I hereby state that this Well Location Certificate was prepared by me, or under my direct supervision, that the fieldwork was completed on 3/17/11, for and on behalf of Noble Energy Inc.. That this is not a Land Survey Plat or an Improvement Survey Plat, and that it is not to be relied upon for establishment of fence, building, or other future improvement lines.



- NOTE:**
- 1) Bearings shown are Grid Bearings of the Colorado State Plane Coordinate System, North Zone, North American Datum 1983/2007. The lined dimensions as contained herein are based upon the "U.S. Survey Foot."
  - 2) Ground elevations are based on an observed GPS elevation (NAVD 1988 DATUM).
  - 3) NEAREST EXISTING WELL: HARPER USX EE27-8 593'
  - 4) IMPROVEMENTS: See LOCATION DRAWING for all visible improvements within 400' of disturbed area.
  - 5) SURFACE USE: CROP FIELD
  - 6) INSTRUMENT OPERATOR: ADAM KELLY

**SURFACE LOCATION**  
LATITUDE: 40.54681°N  
LONGITUDE: 104.64083°W  
PDOP: 1.4  
ELEV: 4868'  
1/4, 1/4: SE/4NE1/4  
NEAREST PROPERTY LINE: 225' SOUTH

**BOTTOM HOLE**  
LATITUDE: 40.55189°N  
LONGITUDE: 104.64206°W

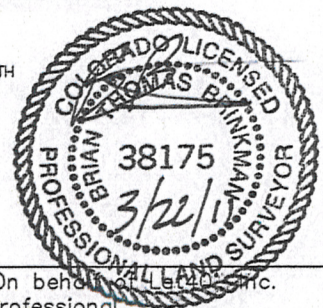
**NOTE**  
According to Colorado law, you must commence any legal action based upon any defect in this W.L.C. within three years after you discover such defect. In no event, may any action based upon any defect in this survey be commenced more than ten years after the date of the certificate shown hereon. (13-80-105 C.R.S.)

## LEGEND

- = ALIQUOT MONUMENT AS DESCRIBED
- = CALCULATED POSITION

Brian T. Brinkman—On behalf of Noble Energy Inc.  
Colorado Licensed Professional  
Land Surveyor No. 38175

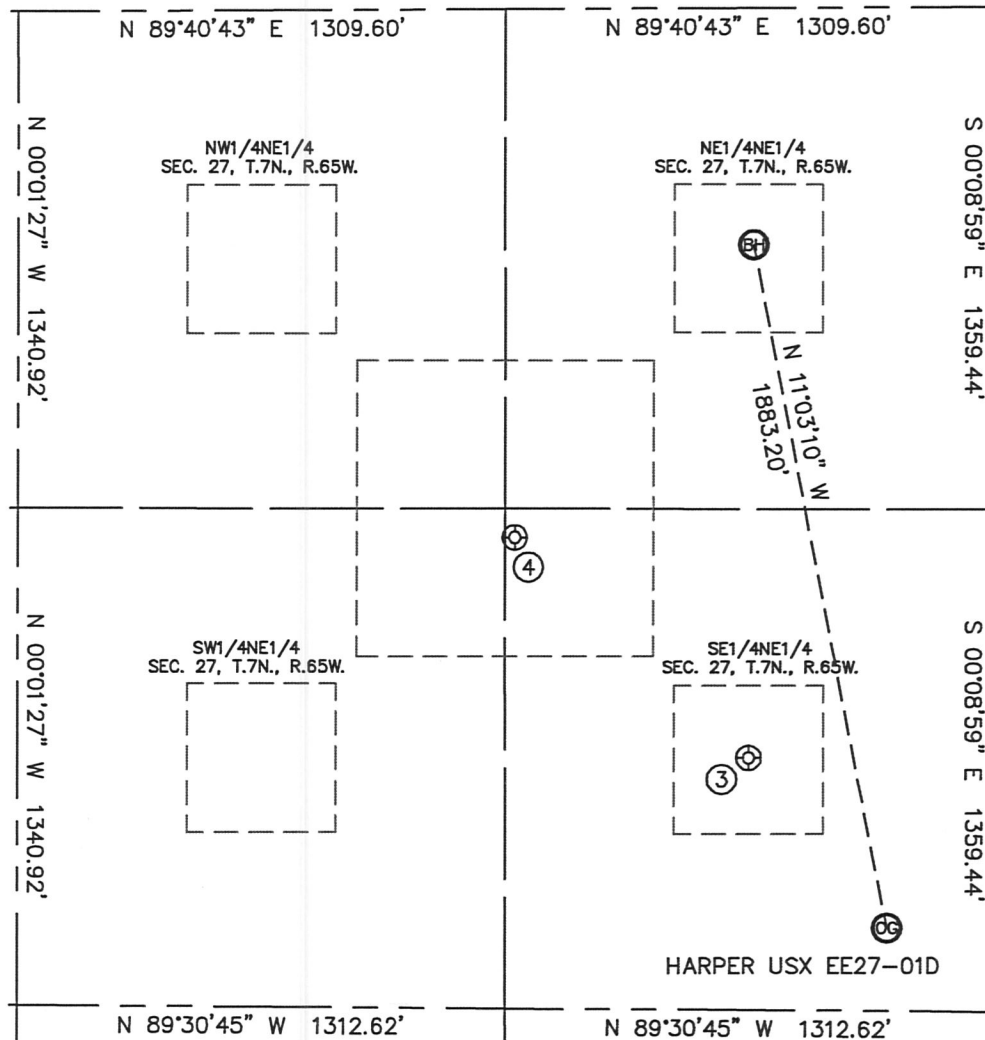
PROJECT#: 2011070



# SITE SKETCH

HARPER USX EE27-01D

SECTION: 27  
TOWNSHIP: 7N  
RANGE: 65W



③

HARPER USX EE27-8  
SE1/4NE1/4  
2026' FNL  
655' FEL  
LAT-40.54809°N  
LONG-104.64215°W  
PDOP: 1.4  
ELEV: 4870'

④

HARPER USX EE27-17  
SE1/4NE1/4  
1428' FNL  
1285' FEL  
LAT-40.54974°N  
LONG-104.64440°W  
PDOP: 1.4  
ELEV: 4840'

