

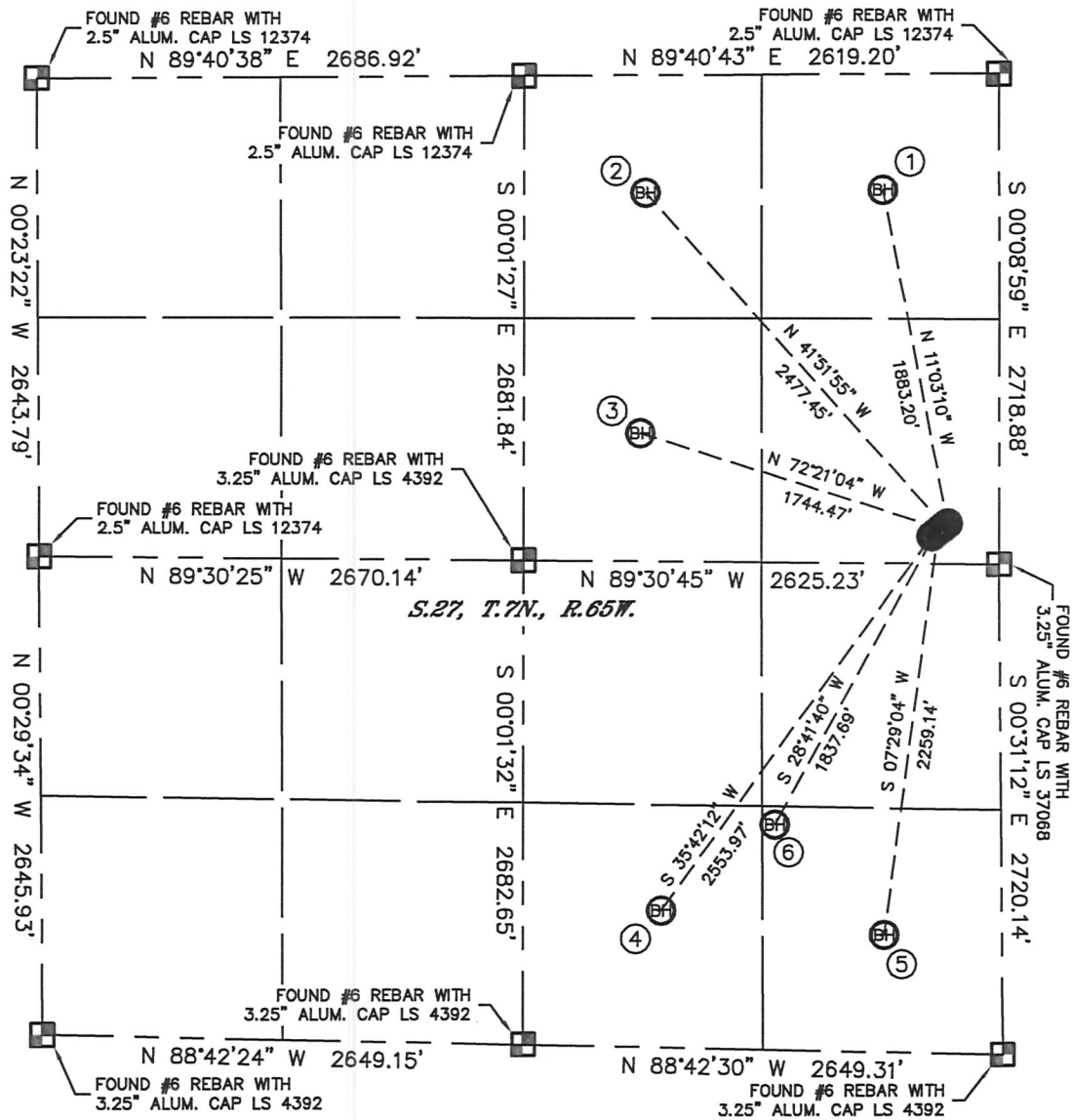
Lat40°, Inc. 1635 Foxtrail Drive, Suite 325 Loveland, CO 80538

MULTI-WELL PLAN

THIS MAP DOES NOT REPRESENT A BOUNDARY SURVEY

HARPER USX EE27-01D, 02D, 07D, 15D, 16D & 23D

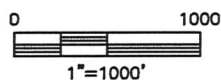
SECTION: 27
TOWNSHIP: 7N
RANGE: 65W



- | | | | | | |
|---|--|---|--|---|---|
| ①
-BOTTOM HOLE-
HARPER USX EE27-01D
640' FNL
640' FEL
LAT- 40.55189°N
LONG- 104.64206°W | ②
-BOTTOM HOLE-
HARPER USX EE27-02D
650' FNL
1950' FEL
LAT- 40.55188°N
LONG- 104.64677°W | ③
-BOTTOM HOLE-
HARPER USX EE27-07D
1980' FNL
1980' FEL
LAT- 40.54823°N
LONG- 104.64692°W | ④
-BOTTOM HOLE-
HARPER USX EE27-15D
760' FSL
1880' FEL
LAT- 40.54097°N
LONG- 104.64658°W | ⑤
-BOTTOM HOLE-
HARPER USX EE27-16D
650' FSL
650' FEL
LAT- 40.54056°N
LONG- 104.64215°W | ⑥
-BOTTOM HOLE-
HARPER USX EE27-23D
1250' FSL
1250' FEL
LAT- 40.54226°N
LONG- 104.64431°W |
|---|--|---|--|---|---|

LEGEND

- = ALIQUOT MONUMENT AS DESCRIBED
○ = CALCULATED POSITION



PROJECT#: 2011070

Lat40°, Inc. 1635 Foxtrail Drive, Suite 325 Loveland, CO 80538

MULTI-WELL PLAN

HARPER USX EE27-01D, 02D, 07D, 15D, 16D & 23D

SECTION: 27
TOWNSHIP: 7N
RANGE: 65W

