

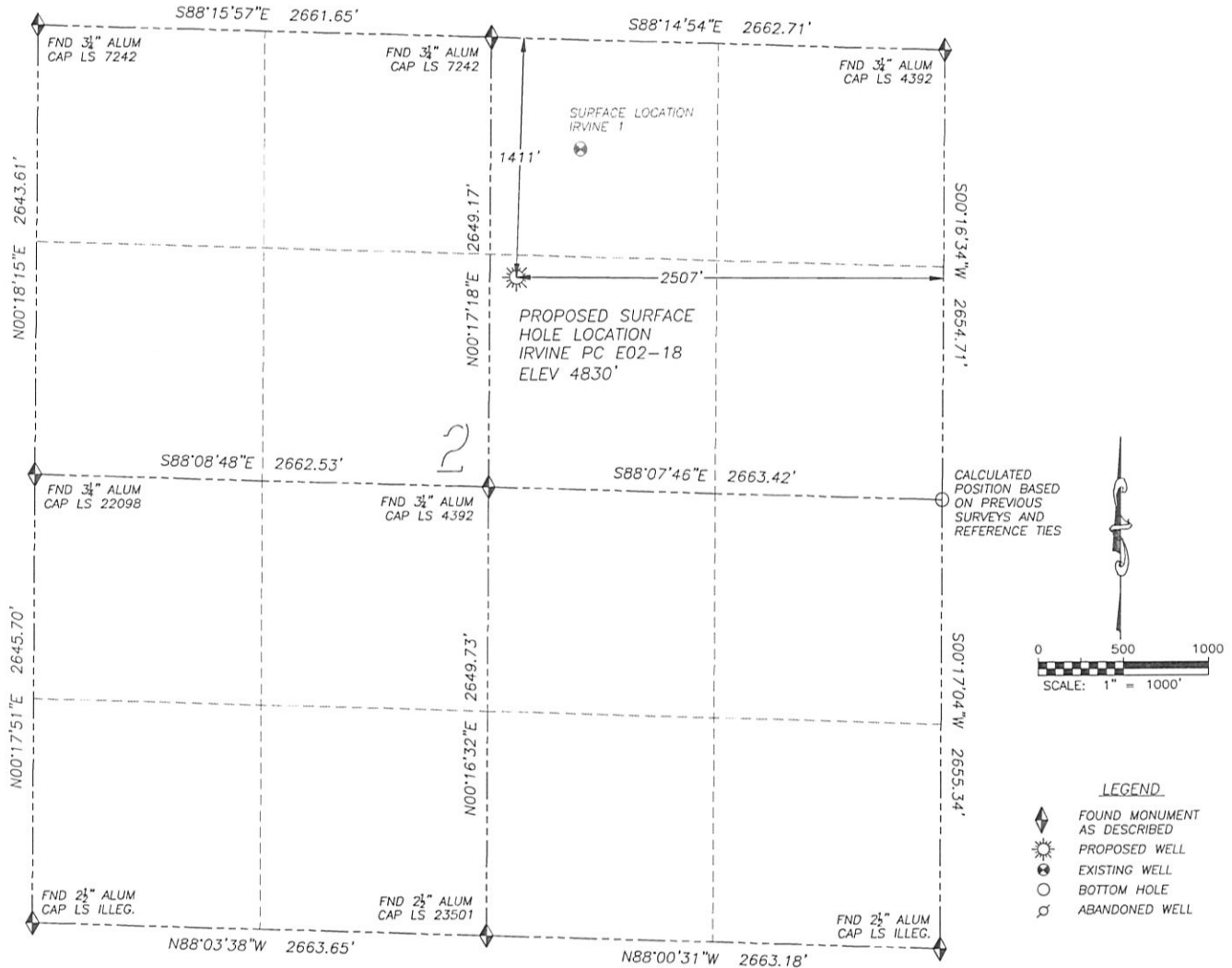
DALEY LAND SURVEYING, INC.

PARKER, CO. 80134

303 953 9841

# WELL LOCATION CERTIFICATE IRVINE PC E02-18

SECTION 2, TOWNSHIP 6 NORTH, RANGE 65 WEST OF THE 6TH PRINCIPAL MERIDIAN

**NAD 83 LATITUDE AND LONGITUDE**

IRVINE PC E02-18 SURFACE HOLE:

LATITUDE: N40.51890°

LONGITUDE: W104.62962°

ELEVATION: 4830'

FOOTAGE: 1411' FNL, 2507' FEL

PDOP: 1.7

QTR/QTR: SW4/NE4

PROP LINE: 155'± WEST

IN ACCORDANCE WITH A REQUEST FROM JOE JOHNSON OF NOBLE ENERGY INC., DALEY LAND SURVEYING, INC. HAS DETERMINED THE SURFACE LOCATION OF THE IRVINE PC E02-18 WELL TO BE 1411' FNL, 2507' FEL, AS MEASURED AT NINETY (90) DEGREES FROM THE SECTION LINES OF SECTION 2, TOWNSHIP 6 NORTH, RANGE 65 WEST OF THE 6TH PRINCIPAL MERIDIAN, WELD COUNTY, COLORADO.

I HEREBY CERTIFY THAT THIS WELL LOCATION CERTIFICATE WAS PREPARED BY ME OR UNDER MY DIRECT SUPERVISION, THAT THE WORK WAS COMPLETED ON 2/15/2011 FOR AND ON BEHALF OF NOBLE ENERGY, INC., AND THAT THIS MAP DOES NOT REPRESENT A BOUNDARY SURVEY, IT IS NOT A LAND SURVEY PLAT OR AN IMPROVEMENT SURVEY PLAT AND IT IS NOT TO BE RELIED UPON FOR THE ESTABLISHMENT OF FENCE, BUILDING OR OTHER FUTURE IMPROVEMENT LINES.

**NOTES:**

- 1) BEARINGS FOR THIS MAP ARE ASSUMED AND BASED UPON GPS OBSERVATIONS MADE BETWEEN MONUMENTS LOCATED AT THE NORTHEAST CORNER AND NORTH QUARTER CORNER OF SECTION 2, T.6N., R.65W.
- 2) HORIZONTAL DATUM IS NAD83.
- 3) VERTICAL DATUM IS NAVD88. ELEVATIONS ARE DERIVED FROM GPS OBSERVATIONS PROCESSED THROUGH OPUS, UTILIZING THE GEOID03 MODEL.
- 4) SEE LOCATION DRAWING FOR VISIBLE IMPROVEMENTS WITHIN 600' OF PROPOSED SURFACE HOLE LOCATION.
- 5) SURFACE USE: AGRICULTURAL.

**NEAREST EXISTING WELL:**

IRVINE 1 SURFACE HOLE

LATITUDE: N40.52096°

LONGITUDE: W104.62828°

ELEVATION: 4819'

841' NORTHEAST

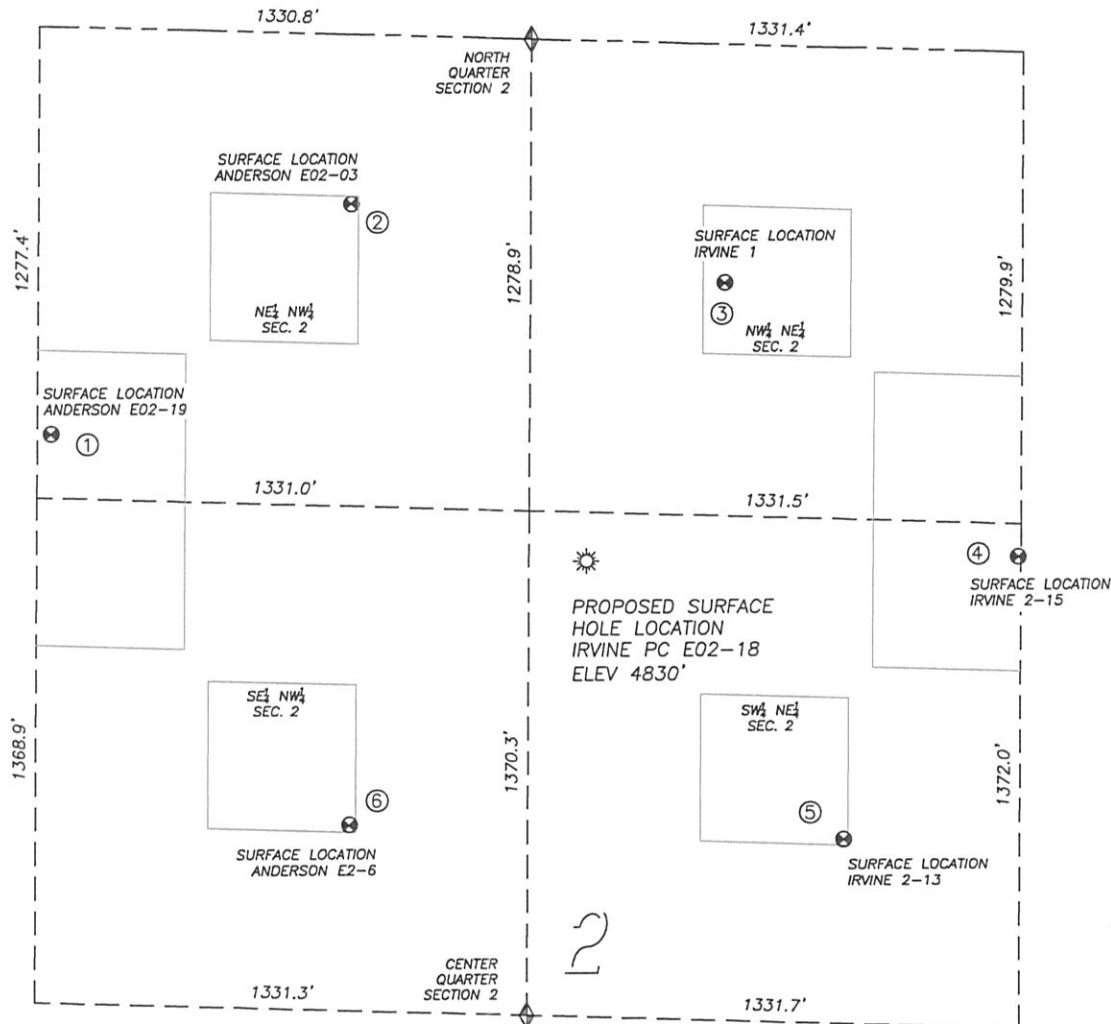
NOTICE: According to Colorado law you MUST commence any legal action based upon any defect in this W.L.C. within three years after you first discover such defect. In no event may any action based upon any such defect in this W.L.C. be commenced more than ten years from the date of the certification shown herein.



FOR AND ON BEHALF OF  
DALEY LAND SURVEYING INC.,  
Robert Daley, PLS 35597

## SITE SKETCH IRVINE PC E02-18

SECTION 2, TOWNSHIP 6 NORTH, RANGE 65 WEST OF THE 6TH PRINCIPAL MERIDIAN



①

ANDERSON E02-19  
NE/NW SEC. 2  
1106' FNL, 1367' FWL  
1489' NW OF PROPOSED  
SURFACE HOLE LOCATION  
LAT. N40.51986°  
LONG. W104.63483°  
EL: 4848'  
PDOP 1.6

②

ANDERSON E02-03  
NE/NW SEC. 2  
461' FNL, 2175' FWL  
1160' NW OF PROPOSED  
SURFACE HOLE LOCATION  
LAT. N40.52156°  
LONG. W104.63191°  
EL: 4841'  
PDOP 2.2

③

IRVINE 1  
NW/NE SEC. 2  
647' FNL, 2137' FEL  
841' NE OF PROPOSED  
SURFACE HOLE LOCATION  
LAT. N40.52096°  
LONG. W104.62828°  
EL: 4819'  
PDOP 2.2

④

IRVINE 2-15  
SW/NE SEC. 2  
1369' FNL, 1338' FEL  
1169' E OF PROPOSED  
SURFACE HOLE LOCATION  
LAT. N40.51891°  
LONG. W104.62542°  
EL: 4811'  
PDOP 1.4

⑤

IRVINE 2-13  
SW/NE SEC. 2  
2150' FNL, 1808' FEL  
1030' SE OF PROPOSED  
SURFACE HOLE LOCATION  
LAT. N40.51681°  
LONG. W104.62712°  
EL: 4820'  
PDOP 1.5

⑥

ANDERSON E2-6  
SE/NW SEC. 2  
2145' FNL, 2179' FWL  
960' SW OF PROPOSED  
SURFACE HOLE LOCATION  
LAT. N40.51694°  
LONG. W104.63193°  
EL: 4846'  
PDOP 1.5

## NOTES:

- 1) THIS DOES NOT REPRESENT A BOUNDARY SURVEY
- 2) THE LATITUDES AND LONGITUDES SHOWN ARE REFERENCED TO NAD83
- 3) DATUM FOR ELEVATION IS NAVD88. ELEVATIONS ARE DERIVED FROM GPS-RTK OBSERVATIONS PROCESSED THROUGH OPUS, UTILIZING THE GEOID03 MODEL.