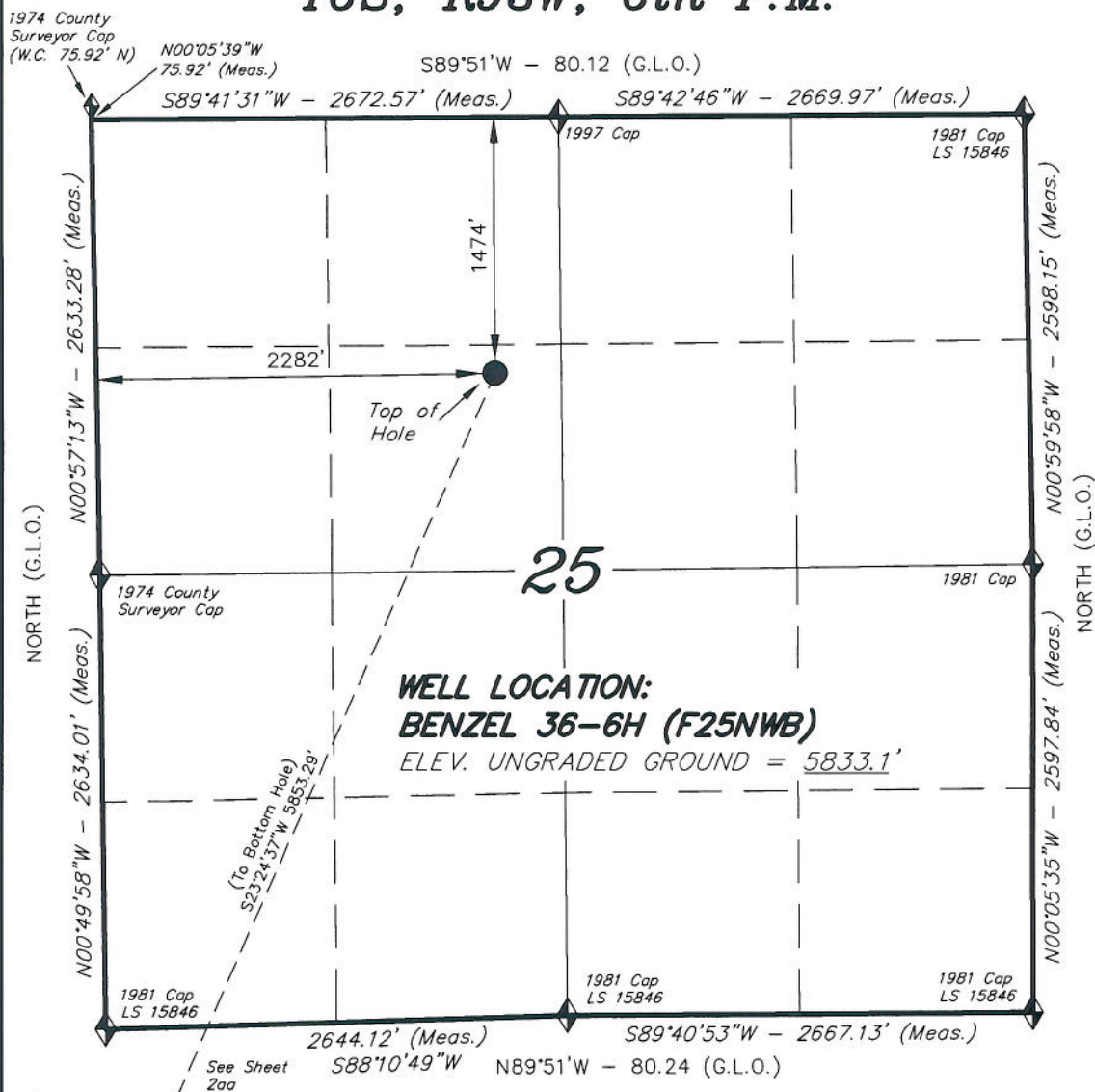


T6S, R93W, 6th P.M.



◆ = SECTION CORNERS LOCATED

Basis of elevation is the Rifle 2 Triangulation Station. 39°31'53.80" N Lat. & 107°47'07.78" W Long. (NAD 83). Elevation = 5323.1' (NAVD88).

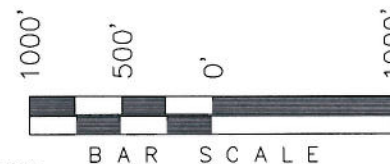
NAD 83 (SURFACE LOCATION)

LATITUDE = 39°30'02.57" (39.500713)

LONGITUDE = 107°43'31.99" (107.725553)

ENCANA OIL & GAS (USA) INC

WELL LOCATION, BENZEL 36-6H (F25NWB), LOCATED AS SHOWN IN THE SE 1/4 NW 1/4 OF SECTION 25, T6S, R93W, 6th P.M. GARFIELD COUNTY, COLORADO.



NOTES:

1. Well footages are measured at right angles to the Section Lines.
2. Bearings are based on Global Positioning Satellite observations.
3. G.P.S. Operator: C.D. SLAUGH, (PDOP) = 2.4

IMPROVEMENT NOTE:

See addendum to legal plat (sheet 2b) for visible improvements within 400' of the proposed well pad.

THIS IS TO CERTIFY THAT THE ABOVE PLAT WAS PREPARED FROM FIELD NOTES OF SURVEYS MADE BY ME OR UNDER MY SUPERVISION. THE LOCATION HAS BEEN STAKED ON THE GROUND AS SHOWN ON THE PLAT, AND THAT THE SAME ARE TRUE AND CORRECT TO THE BEST OF MY KNOWLEDGE AND BELIEF.

REGISTERED LAND SURVEYOR
REGISTRATION NO. 30125
STATE OF COLORADO

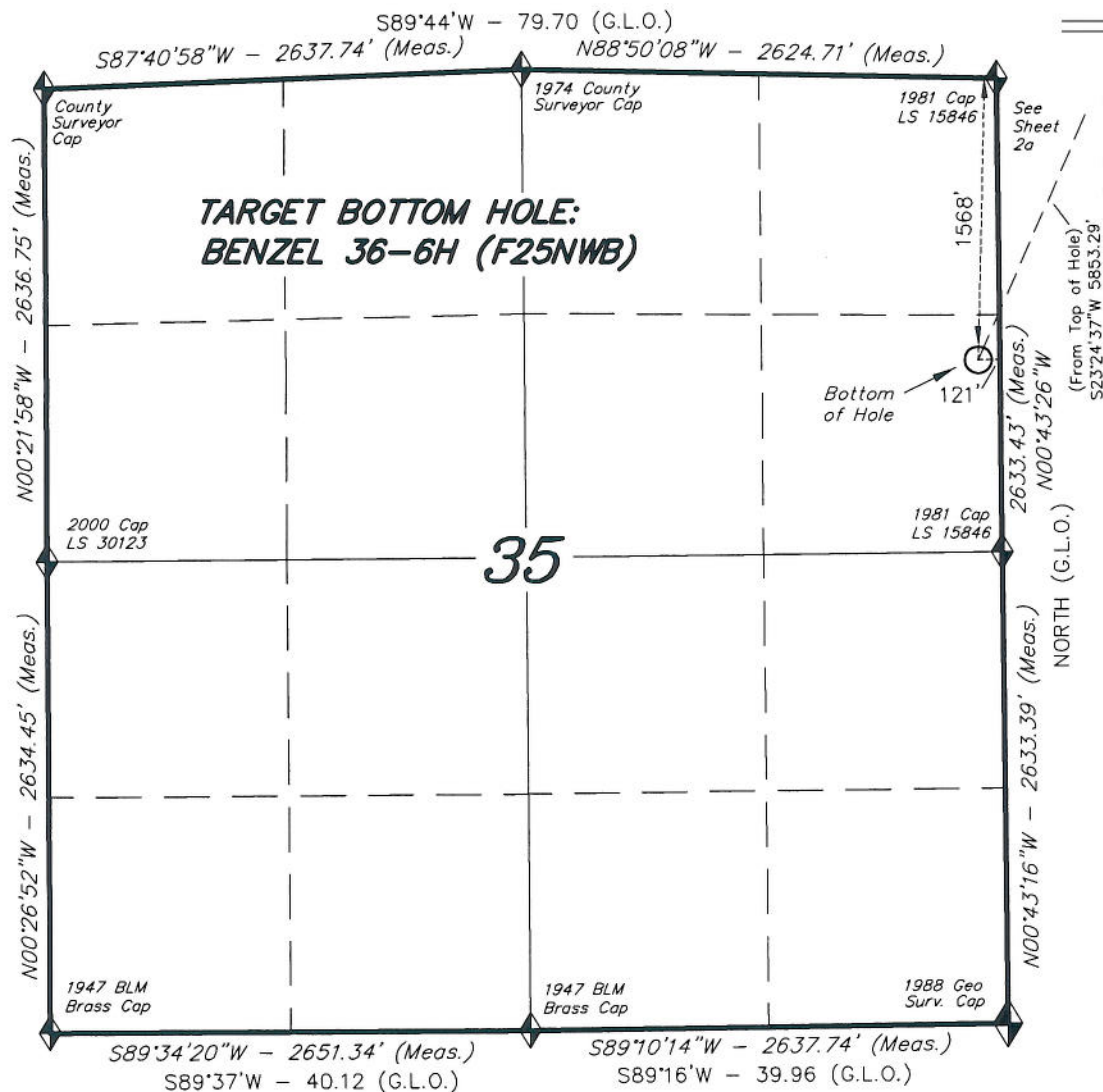
TRI STATE LAND SURVEYING & CONSULTING

180 NORTH VERNAL AVE. - VERNAL, UTAH 84078
(435) 781-2501

DATE SURVEYED: 11-08-10	SURVEYED BY: C.D.S.	SHEET 2a OF 11
DATE DRAWN: 02-08-11	DRAWN BY: L.C.S.	
REVISED: L.C.S. 03-24-11	SCALE: 1" = 1000'	

T6S, R93W, 6th P.M.

ENCANA OIL & GAS (USA) INC



TARGET BOTTOM HOLE, BENZEL 36-6H (F25NWB), LOCATED AS SHOWN IN THE SE 1/4 NE 1/4 OF SECTION 35, T6S, R93W, 6th P.M. GARFIELD COUNTY, COLORADO.



NOTES:

1. Well footages are measured at right angles to the Section Lines.
2. Bearings are based on Global Positioning Satellite observations.

THIS IS TO CERTIFY THAT THE ABOVE PLAT WAS PREPARED FROM FIELD NOTES OF SURVEYS MADE BY ME OR UNDER MY SUPERVISION. THE LOCATION HAS BEEN STAKED ON THE GROUND AS SHOWN ON THE PLAT, AND THAT THE SAME ARE TRUE AND CORRECT TO THE BEST OF MY KNOWLEDGE AND BELIEF.

[Signature]
30125
REGISTERED LAND SURVEYOR
REGISTRATION No. 30125
STATE OF COLORADO
JUL 10 2011

TRI STATE LAND SURVEYING & CONSULTING

180 NORTH VERNAL AVE. - VERNAL, UTAH 84078
(435) 781-2501

DATE SURVEYED: 11-08-10	SURVEYED BY: C.D.S.	SHEET 2aa OF 11
DATE DRAWN: 02-08-11	DRAWN BY: L.C.S.	
REVISED: L.C.S. 03-24-11	SCALE: 1" = 1000'	

◆ = SECTION CORNERS LOCATED

Basis of elevation is the Rifle 2 Triangulation Station. 39°31'53.80" N Lat. & 107°47'07.78" W Long. (NAD 83). Elevation = 5323.1' (NAVD88).