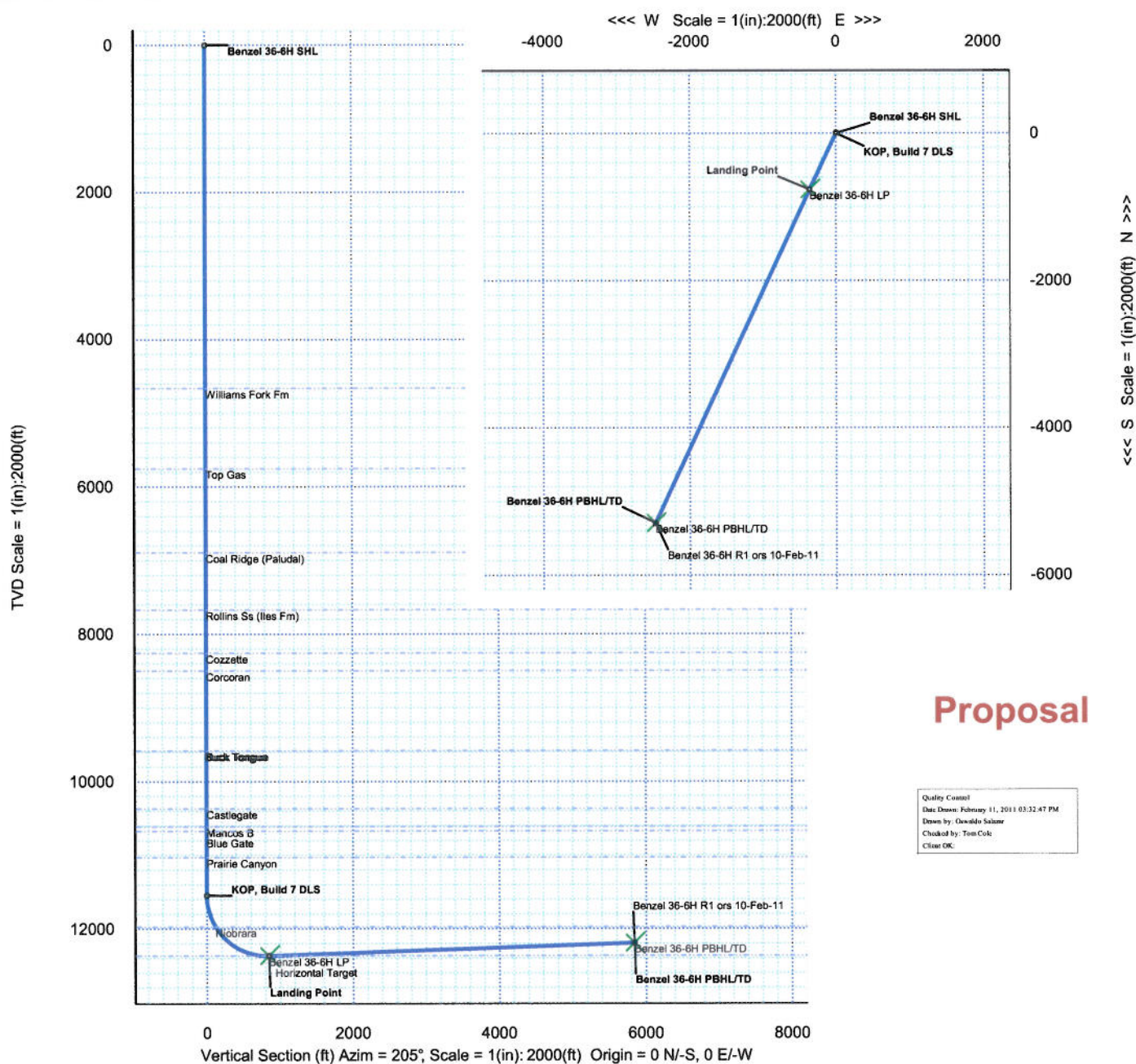
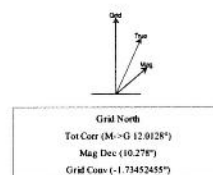


WELL <b>Benzel 36-6H</b>		FIELD <b>CO, Garfield Co. (NAD83UTM13)</b>		STRUCTURE <b>Encana 25-06S-93W (F25NWB)</b>	
Magnetic Parameters Model: BGGM 2010		Surface Location Lat: N 39 30 2.567 Lon: W 107 43 32.246		Miscellaneous Skt: Benzel 36-6H Plan: R1 ors 10-Feb-11	
Dip: 65.826° Mag Dec: 10.278°		NAD83 UTM Zone 13N US Feet Northing: 14356568.82 RUS Easting: 871516.90 RUS Grid Conv: -1.73452455° Scale Fact: 1.00027629		TVD Ref: RKB(5867ft above MSL) Srvy Date: February 01, 2011	
Date: February 01, 2011 FS: 52311.3mT					

Critical Phase			Critical Phase						
Critical Phase	MD	INCL	AZIM	TYD	YSKC	Nett./Std.	Elev./Wgt.	ELS	
Baker 36-4H SHL	0.00	0.00	205.00	0.00	0.00	0.00	0.00	0.00	
Monroe Madison	33.00	0.00	205.00	33.00	0.00	0.00	0.00	0.00	
William Park Frn	4641.00	0.00	205.00	0.00	4641.00	0.00	0.00	0.00	
Say Cn	5733.00	0.00	205.00	5733.00	0.00	0.00	0.00	0.00	
Coral Ridge (Petaluk)	6497.00	0.00	205.00	6497.00	0.00	0.00	0.00	0.00	
Railton Se (Box Fan)	7644.00	0.00	205.00	7644.00	0.00	0.00	0.00	0.00	
Coverage	8259.00	0.00	205.00	8259.00	0.00	0.00	0.00	0.00	
Coverage	8499.00	0.00	205.00	8499.00	0.00	0.00	0.00	0.00	
Burns Tongue	9542.00	0.00	205.00	0.00	9542.00	0.00	0.00	0.00	
Monroe A	9542.00	0.00	205.00	9242.00	0.00	0.00	0.00	0.00	
Cashlight	10370.00	0.00	205.00	10370.00	0.00	0.00	0.00	0.00	
Monroe B	10611.00	0.00	205.00	10611.00	0.00	0.00	0.00	0.00	
Blue Gate	10671.00	0.00	205.00	10671.00	0.00	0.00	0.00	0.00	
Prairie Canyon	11034.00	0.00	205.00	11034.00	0.00	0.00	0.00	0.00	
KOP, Build 7 DLS	11544.00	0.00	205.00	11544.00	0.00	0.00	0.00	0.00	
Nicholson	119627.53	0.00	205.00	119711.00	0.00	117.78	-106.74	-7.00	
Holmesburg	12805.12	84.00	205.00	12346.00	769.93	-719.92	-333.84	7.00	
Landmark Point	12862.27	92.00	205.00	12366.00	847.06	-767.70	-357.98	7.00	
Holmesburg	12862.27	92.00	205.00	12366.00	847.06	-767.70	-357.98	7.00	
Lattermost Sight (Barnegat)				12426.00					
Baker 36-4H PHD, TTD	17662.27	92.00	205.00	12161.50	5844.02	-5296.48	-2469.79	0.00	

Surface Location								
Nothing: 14356568.82      Earing: 871516.90								
Target Description			Grid Coord			Local Coord		
Target Name	Shape	Major Axis	Northing	Easting	TVD	Slope	Northing	Easting
Round 16-6H PHBLTD	Point	0.00	14351270.89	869046.43	12191.50	5844.02	-5296.48	-2469.79
Round 16-6H LP	Point	0.00	14355800.91	871158.82	12366.60	847.04	-767.70	-357.98

Rev 1





## Benzel 36-6H R1 ors 10-Feb-11 Proposal Report

(Def Plan)

Report Date: February 11, 2011 - 03:58 PM  
 Client: EnCana Oil & Gas (USA) Inc.  
 Field: CO, Garfield County (NAD 83 UTM 13) EnCana 2010  
 Structure / Slot: Encana 25-06S-93W (F25NWB Pad) - Patterson 326 / Benzel 36-6H  
 Well: Benzel 36-6H  
 Borehole: Original Hole  
 UWI / API#: Unknown / Unknown  
 Survey Name: Benzel 36-6H R1 ors 10-Feb-11  
 Survey Date: February 01, 2011  
 Tort / AHD / DDI / ERD Ratio: 92.000' / 5844.032 ft / 5.890 / 0.473  
 Coordinate Reference System: NAD83 UTM Zone 13N, US Feet  
 Location Lat / Long: N 39° 30' 2.56880", W 107° 43' 32.24837"  
 Location Grid N/E Y/X: N 14356568.820 NUS, E 871516.900 NUS  
 CRS Grid Convergence Angle: -1.73452455 °  
 Grid Scale Factor: 1.00027829

Survey / DLS Computation: Minimum Curvature / Lubinski  
 Vertical Section Azimuth: 205.000 ° (Grid North)  
 Vertical Section Origin: 0.000 ft, 0.000 ft  
 TVD Reference Datum: RKB  
 TVD Reference Elevation: 5867.000 ft above MSL  
 Seabed / Ground Elevation: 5834.000 ft above MSL  
 Magnetic Declination: 10.278 °  
 Total Field Strength: 52311.317 nT  
 Magnetic Dip Angle: 65.826 °  
 Declination Date: February 01, 2011  
 Magnetic Declination Model: BGGM 2010  
 North Reference: Grid North  
 Grid Convergence Used: -1.735 °  
 Total Corr Mag North->Grid North: 12.013 °  
 Local Coord Referenced To: Well Head

Comments	MD (ft)	Incl (°)	Azim Grid (°)	TVD (ft)	VSEC (ft)	NS (ft)	EW (ft)	DLS (°/100ft)	Northing (ftUS)	Easting (ftUS)	Latitude (N/S ° ' ")	Longitude (E/W ° ' ")
Benzel 36-6H SHL	0.00	0.00	205.00	0.00	0.00	0.00	0.00	0.00	14356568.82	871516.90	N 39 30 2.57	W 107 43 32.25
Marker MudLine	33.00	0.00	205.00	33.00	0.00	0.00	0.00	0.00	14356568.82	871516.90	N 39 30 2.57	W 107 43 32.25
	100.00	0.00	205.00	100.00	0.00	0.00	0.00	0.00	14356568.82	871516.90	N 39 30 2.57	W 107 43 32.25
	200.00	0.00	205.00	200.00	0.00	0.00	0.00	0.00	14356568.82	871516.90	N 39 30 2.57	W 107 43 32.25
	300.00	0.00	205.00	300.00	0.00	0.00	0.00	0.00	14356568.82	871516.90	N 39 30 2.57	W 107 43 32.25
	400.00	0.00	205.00	400.00	0.00	0.00	0.00	0.00	14356568.82	871516.90	N 39 30 2.57	W 107 43 32.25
	500.00	0.00	205.00	500.00	0.00	0.00	0.00	0.00	14356568.82	871516.90	N 39 30 2.57	W 107 43 32.25
	600.00	0.00	205.00	600.00	0.00	0.00	0.00	0.00	14356568.82	871516.90	N 39 30 2.57	W 107 43 32.25
	700.00	0.00	205.00	700.00	0.00	0.00	0.00	0.00	14356568.82	871516.90	N 39 30 2.57	W 107 43 32.25
	800.00	0.00	205.00	800.00	0.00	0.00	0.00	0.00	14356568.82	871516.90	N 39 30 2.57	W 107 43 32.25
	900.00	0.00	205.00	900.00	0.00	0.00	0.00	0.00	14356568.82	871516.90	N 39 30 2.57	W 107 43 32.25
	1000.00	0.00	205.00	1000.00	0.00	0.00	0.00	0.00	14356568.82	871516.90	N 39 30 2.57	W 107 43 32.25
	1100.00	0.00	205.00	1100.00	0.00	0.00	0.00	0.00	14356568.82	871516.90	N 39 30 2.57	W 107 43 32.25
	1200.00	0.00	205.00	1200.00	0.00	0.00	0.00	0.00	14356568.82	871516.90	N 39 30 2.57	W 107 43 32.25
	1300.00	0.00	205.00	1300.00	0.00	0.00	0.00	0.00	14356568.82	871516.90	N 39 30 2.57	W 107 43 32.25
	1400.00	0.00	205.00	1400.00	0.00	0.00	0.00	0.00	14356568.82	871516.90	N 39 30 2.57	W 107 43 32.25
	1500.00	0.00	205.00	1500.00	0.00	0.00	0.00	0.00	14356568.82	871516.90	N 39 30 2.57	W 107 43 32.25
	1600.00	0.00	205.00	1600.00	0.00	0.00	0.00	0.00	14356568.82	871516.90	N 39 30 2.57	W 107 43 32.25
	1700.00	0.00	205.00	1700.00	0.00	0.00	0.00	0.00	14356568.82	871516.90	N 39 30 2.57	W 107 43 32.25
	1800.00	0.00	205.00	1800.00	0.00	0.00	0.00	0.00	14356568.82	871516.90	N 39 30 2.57	W 107 43 32.25
	1900.00	0.00	205.00	1900.00	0.00	0.00	0.00	0.00	14356568.82	871516.90	N 39 30 2.57	W 107 43 32.25
	2000.00	0.00	205.00	2000.00	0.00	0.00	0.00	0.00	14356568.82	871516.90	N 39 30 2.57	W 107 43 32.25
	2100.00	0.00	205.00	2100.00	0.00	0.00	0.00	0.00	14356568.82	871516.90	N 39 30 2.57	W 107 43 32.25
	2200.00	0.00	205.00	2200.00	0.00	0.00	0.00	0.00	14356568.82	871516.90	N 39 30 2.57	W 107 43 32.25
	2300.00	0.00	205.00	2300.00	0.00	0.00	0.00	0.00	14356568.82	871516.90	N 39 30 2.57	W 107 43 32.25
	2400.00	0.00	205.00	2400.00	0.00	0.00	0.00	0.00	14356568.82	871516.90	N 39 30 2.57	W 107 43 32.25
	2500.00	0.00	205.00	2500.00	0.00	0.00	0.00	0.00	14356568.82	871516.90	N 39 30 2.57	W 107 43 32.25
	2600.00	0.00	205.00	2600.00	0.00	0.00	0.00	0.00	14356568.82	871516.90	N 39 30 2.57	W 107 43 32.25
	2700.00	0.00	205.00	2700.00	0.00	0.00	0.00	0.00	14356568.82	871516.90	N 39 30 2.57	W 107 43 32.25
	2800.00	0.00	205.00	2800.00	0.00	0.00	0.00	0.00	14356568.82	871516.90	N 39 30 2.57	W 107 43 32.25
	2900.00	0.00	205.00	2900.00	0.00	0.00	0.00	0.00	14356568.82	871516.90	N 39 30 2.57	W 107 43 32.25
	3000.00	0.00	205.00	3000.00	0.00	0.00	0.00	0.00	14356568.82	871516.90	N 39 30 2.57	W 107 43 32.25
	3100.00	0.00	205.00	3100.00	0.00	0.00	0.00	0.00	14356568.82	871516.90	N 39 30 2.57	W 107 43 32.25
	3200.00	0.00	205.00	3200.00	0.00	0.00	0.00	0.00	14356568.82	871516.90	N 39 30 2.57	W 107 43 32.25
	3300.00	0.00	205.00	3300.00	0.00	0.00	0.00	0.00	14356568.82	871516.90	N 39 30 2.57	W 107 43 32.25
	3400.00	0.00	205.00	3400.00	0.00	0.00	0.00	0.00	14356568.82	871516.90	N 39 30 2.57	W 107 43 32.25
	3500.00	0.00	205.00	3500.00	0.00	0.00	0.00	0.00	14356568.82	871516.90	N 39 30 2.57	W 107 43 32.25
	3600.00	0.00	205.00	3600.00	0.00	0.00	0.00	0.00	14356568.82	871516.90	N 39 30 2.57	W 107 43 32.25
	3700.00	0.00	205.00	3700.00	0.00	0.00	0.00	0.00	14356568.82	871516.90	N 39 30 2.57	W 107 43 32.25
	3800.00	0.00	205.00	3800.00	0.00	0.00	0.00	0.00	14356568.82	871516.90	N 39 30 2.57	W 107 43 32.25
	3900.00	0.00	205.00	3900.00	0.00	0.00	0.00	0.00	14356568.82	871516.90	N 39 30 2.57	W 107 43 32.25
	4000.00	0.00	205.00	4000.00	0.00	0.00	0.00	0.00	14356568.82	871516.90	N 39 30 2.57	W 107 43 32.25
	4100.00	0.00	205.00	4100.00	0.00	0.00	0.00	0.00	14356568.82	871516.90	N 39 30 2.57	W 107 43 32.25
	4200.00	0.00	205.00	4200.00	0.00	0.00	0.00	0.00	14356568.82	871516.90	N 39 30 2.57	W 107 43 32.25
	4300.00	0.00	205.00	4300.00	0.00	0.00	0.00	0.00	14356568.82	871516.90	N 39 30 2.57	W 107 43 32.25
	4400.00	0.00	205.00	4400.00	0.00	0.00	0.00	0.00	14356568.82	871516.90	N 39 30 2.57	W 107 43 32.25
	4500.00	0.00	205.00	4500.00	0.00	0.00	0.00	0.00	14356568.82	871516.90	N 39 30 2.57	W 107 43 32.25
	4600.00	0.00	205.00	4600.00	0.00	0.00	0.00	0.00	14356568.82	871516.90	N 39 30 2.57	W 107 43 32.25
Williams Fork Fm	4661.00	0.00	205.00	4661.00	0.00	0.00	0.00	0.00	14356568.82	871516.90	N 39 30 2.57	W 107 43 32.25
	4700.00	0.00	205.00	4700.00	0.00	0.00	0.00	0.00	14356568.82	871516.90	N 39 30 2.57	W 107 43 32.25
	4800.00	0.00	205.00	4800.00	0.00	0.00	0.00	0.00	14356568.82	871516.90	N 39 30 2.57	W 107 43 32.25
	4900.00	0.00	205.00	4900.00	0.00	0.00	0.00	0.00	14356568.82	871516.90	N 39 30 2.57	W 107 43 32.25
	5000.00	0.00	205.00	5000.00	0.00	0.00	0.00	0.00	14356568.82	871516.90	N 39 30 2.57	W 107 43 32.25
	5100.00	0.00	205.00	5100.00	0.00	0.00	0.00	0.00	14356568.82	871516.90	N 39 30 2.57	W 107 43 32.25
	5200.00	0.00	205.00	5200.00	0.00	0.00	0.00	0.00	14356568.82	871516.90	N 39 30 2.57	W 107 43 32.25
	5300.00	0.00	205.00	5300.00	0.00	0.00	0.00	0.00	14356568.82	871516.90	N 39 30 2.57	W 107 43 32.25
	5400.00	0.00	205.00	5400.00	0.00	0.00	0.00	0.00	14356568.82	871516.90	N 39 30 2.57	W 107 43 32.25
	5500.00	0.00	205.00	5500.00	0.00	0.00	0.00	0.00	14356568.82	871516.90	N 39 30 2.57	W 107 43 32.25
	5600.00	0.00	205.00	5600.00	0.00	0.00	0.00	0.00	14356568.82	871516.90	N 39 30 2.57	W 107 43 32.25
	5700.00	0.00	205.00	5700.00	0.00	0.00	0.00	0.00	14356568.82	871516.90	N 39 30 2.57	W 107 43 32.25
Top Gas	5753.00	0.00	205.00	5753.00	0.00	0.00	0.00	0.00	14356568.82	871516.90	N 39 30 2.57	W 107 43 32.25
	5800.00	0.00	205.00	5800.00	0.00	0.00	0.00	0.00	14356568.82	871516.90	N 39 30 2.57	W 107 43 32.25
	5900.00	0.00	205.00	5900.00	0.00	0.00	0.00	0.00	14356568.82	871516.90	N 39 30 2.57	W 107 43 32.25
	6000.00	0.00	205.00	6000.00	0.00	0.00	0.00	0.00	14356568.82	871516.90	N 39 30 2.57	W 107 43 32.25
	6100.00	0.00	205.00	6100.00	0.00	0.00	0.00	0.00	14356568.82	871516.90	N 39 30 2.57	W 107 43 32.25



Comments	MD (ft)	Incl (°)	Azim Grid (°)	TVD (ft)	VSEC (ft)	NS (ft)	EW (ft)	DLS (°/100ft)	Northing (ftUS)	Easting (ftUS)	Latitude (N/S ° ' ")	Longitude (E/W ° ' ")
	6200.00	0.00	205.00	6200.00	0.00	0.00	0.00	0.00	14356568.82	871516.90	N 39 30	2.57 W 107 43 32.25
	6300.00	0.00	205.00	6300.00	0.00	0.00	0.00	0.00	14356568.82	871516.90	N 39 30	2.57 W 107 43 32.25
	6400.00	0.00	205.00	6400.00	0.00	0.00	0.00	0.00	14356568.82	871516.90	N 39 30	2.57 W 107 43 32.25
	6500.00	0.00	205.00	6500.00	0.00	0.00	0.00	0.00	14356568.82	871516.90	N 39 30	2.57 W 107 43 32.25
	6600.00	0.00	205.00	6600.00	0.00	0.00	0.00	0.00	14356568.82	871516.90	N 39 30	2.57 W 107 43 32.25
	6700.00	0.00	205.00	6700.00	0.00	0.00	0.00	0.00	14356568.82	871516.90	N 39 30	2.57 W 107 43 32.25
	6800.00	0.00	205.00	6800.00	0.00	0.00	0.00	0.00	14356568.82	871516.90	N 39 30	2.57 W 107 43 32.25
	6897.00	0.00	205.00	6897.00	0.00	0.00	0.00	0.00	14356568.82	871516.90	N 39 30	2.57 W 107 43 32.25
	6900.00	0.00	205.00	6900.00	0.00	0.00	0.00	0.00	14356568.82	871516.90	N 39 30	2.57 W 107 43 32.25
	7000.00	0.00	205.00	7000.00	0.00	0.00	0.00	0.00	14356568.82	871516.90	N 39 30	2.57 W 107 43 32.25
Coal Ridge (Paludal)	7100.00	0.00	205.00	7100.00	0.00	0.00	0.00	0.00	14356568.82	871516.90	N 39 30	2.57 W 107 43 32.25
	7200.00	0.00	205.00	7200.00	0.00	0.00	0.00	0.00	14356568.82	871516.90	N 39 30	2.57 W 107 43 32.25
	7300.00	0.00	205.00	7300.00	0.00	0.00	0.00	0.00	14356568.82	871516.90	N 39 30	2.57 W 107 43 32.25
	7400.00	0.00	205.00	7400.00	0.00	0.00	0.00	0.00	14356568.82	871516.90	N 39 30	2.57 W 107 43 32.25
	7500.00	0.00	205.00	7500.00	0.00	0.00	0.00	0.00	14356568.82	871516.90	N 39 30	2.57 W 107 43 32.25
	7600.00	0.00	205.00	7600.00	0.00	0.00	0.00	0.00	14356568.82	871516.90	N 39 30	2.57 W 107 43 32.25
	7668.00	0.00	205.00	7668.00	0.00	0.00	0.00	0.00	14356568.82	871516.90	N 39 30	2.57 W 107 43 32.25
Rollins Ss (lles Fm)	7700.00	0.00	205.00	7700.00	0.00	0.00	0.00	0.00	14356568.82	871516.90	N 39 30	2.57 W 107 43 32.25
	7800.00	0.00	205.00	7800.00	0.00	0.00	0.00	0.00	14356568.82	871516.90	N 39 30	2.57 W 107 43 32.25
	7900.00	0.00	205.00	7900.00	0.00	0.00	0.00	0.00	14356568.82	871516.90	N 39 30	2.57 W 107 43 32.25
	8000.00	0.00	205.00	8000.00	0.00	0.00	0.00	0.00	14356568.82	871516.90	N 39 30	2.57 W 107 43 32.25
Cozzette	8100.00	0.00	205.00	8100.00	0.00	0.00	0.00	0.00	14356568.82	871516.90	N 39 30	2.57 W 107 43 32.25
	8200.00	0.00	205.00	8200.00	0.00	0.00	0.00	0.00	14356568.82	871516.90	N 39 30	2.57 W 107 43 32.25
	8259.00	0.00	205.00	8259.00	0.00	0.00	0.00	0.00	14356568.82	871516.90	N 39 30	2.57 W 107 43 32.25
	8300.00	0.00	205.00	8300.00	0.00	0.00	0.00	0.00	14356568.82	871516.90	N 39 30	2.57 W 107 43 32.25
Corcoran	8400.00	0.00	205.00	8400.00	0.00	0.00	0.00	0.00	14356568.82	871516.90	N 39 30	2.57 W 107 43 32.25
	8499.00	0.00	205.00	8499.00	0.00	0.00	0.00	0.00	14356568.82	871516.90	N 39 30	2.57 W 107 43 32.25
	8500.00	0.00	205.00	8500.00	0.00	0.00	0.00	0.00	14356568.82	871516.90	N 39 30	2.57 W 107 43 32.25
	8600.00	0.00	205.00	8600.00	0.00	0.00	0.00	0.00	14356568.82	871516.90	N 39 30	2.57 W 107 43 32.25
Mancos A	8700.00	0.00	205.00	8700.00	0.00	0.00	0.00	0.00	14356568.82	871516.90	N 39 30	2.57 W 107 43 32.25
	8800.00	0.00	205.00	8800.00	0.00	0.00	0.00	0.00	14356568.82	871516.90	N 39 30	2.57 W 107 43 32.25
	8900.00	0.00	205.00	8900.00	0.00	0.00	0.00	0.00	14356568.82	871516.90	N 39 30	2.57 W 107 43 32.25
	9000.00	0.00	205.00	9000.00	0.00	0.00	0.00	0.00	14356568.82	871516.90	N 39 30	2.57 W 107 43 32.25
	9100.00	0.00	205.00	9100.00	0.00	0.00	0.00	0.00	14356568.82	871516.90	N 39 30	2.57 W 107 43 32.25
	9200.00	0.00	205.00	9200.00	0.00	0.00	0.00	0.00	14356568.82	871516.90	N 39 30	2.57 W 107 43 32.25
	9300.00	0.00	205.00	9300.00	0.00	0.00	0.00	0.00	14356568.82	871516.90	N 39 30	2.57 W 107 43 32.25
	9400.00	0.00	205.00	9400.00	0.00	0.00	0.00	0.00	14356568.82	871516.90	N 39 30	2.57 W 107 43 32.25
	9500.00	0.00	205.00	9500.00	0.00	0.00	0.00	0.00	14356568.82	871516.90	N 39 30	2.57 W 107 43 32.25
	9582.00	0.00	205.00	9582.00	0.00	0.00	0.00	0.00	14356568.82	871516.90	N 39 30	2.57 W 107 43 32.25
Castlegate	9600.00	0.00	205.00	9600.00	0.00	0.00	0.00	0.00	14356568.82	871516.90	N 39 30	2.57 W 107 43 32.25
	9700.00	0.00	205.00	9700.00	0.00	0.00	0.00	0.00	14356568.82	871516.90	N 39 30	2.57 W 107 43 32.25
	9800.00	0.00	205.00	9800.00	0.00	0.00	0.00	0.00	14356568.82	871516.90	N 39 30	2.57 W 107 43 32.25
	9900.00	0.00	205.00	9900.00	0.00	0.00	0.00	0.00	14356568.82	871516.90	N 39 30	2.57 W 107 43 32.25
	10000.00	0.00	205.00	10000.00	0.00	0.00	0.00	0.00	14356568.82	871516.90	N 39 30	2.57 W 107 43 32.25
	10100.00	0.00	205.00	10100.00	0.00	0.00	0.00	0.00	14356568.82	871516.90	N 39 30	2.57 W 107 43 32.25
Mancos B Blue Gate	10200.00	0.00	205.00	10200.00	0.00	0.00	0.00	0.00	14356568.82	871516.90	N 39 30	2.57 W 107 43 32.25
	10300.00	0.00	205.00	10300.00	0.00	0.00	0.00	0.00	14356568.82	871516.90	N 39 30	2.57 W 107 43 32.25
	10370.00	0.00	205.00	10370.00	0.00	0.00	0.00	0.00	14356568.82	871516.90	N 39 30	2.57 W 107 43 32.25
	10400.00	0.00	205.00	10400.00	0.00	0.00	0.00	0.00	14356568.82	871516.90	N 39 30	2.57 W 107 43 32.25
Prairie Canyon	10500.00	0.00	205.00	10500.00	0.00	0.00	-0.08	0.00	14356568.82	871516.90	N 39 30	2.57 W 107 43 32.25
	10600.00	0.00	205.00	10600.00	0.00	0.00	0.00	0.00	14356568.82	871516.90	N 39 30	2.57 W 107 43 32.25
	10611.00	0.00	205.00	10611.00	0.00	0.00	0.00	0.00	14356568.82	871516.90	N 39 30	2.57 W 107 43 32.25
	10671.00	0.00	205.00	10671.00	0.00	0.00	0.00	0.00	14356568.82	871516.90	N 39 30	2.57 W 107 43 32.25
KOP, Build 7 DLS	10700.00	0.00	205.00	10700.00	0.00	0.00	0.00	0.00	14356568.82	871516.90	N 39 30	2.57 W 107 43 32.25
	10800.00	0.00	205.00	10800.00	0.00	0.00	0.00	0.00	14356568.82	871516.90	N 39 30	2.57 W 107 43 32.25
	10900.00	0.00	205.00	10900.00	0.00	0.00	0.00	0.00	14356568.82	871516.90	N 39 30	2.57 W 107 43 32.25
	11000.00	0.00	205.00	11000.00	0.00	0.00	0.00	0.00	14356568.82	871516.90	N 39 30	2.57 W 107 43 32.25
Niobrara	11034.00	0.00	205.00	11034.00	0.00	0.00	0.00	0.00	14356568.82	871516.90	N 39 30	2.57 W 107 43 32.25
	11100.00	0.00	205.00	11100.00	0.00	0.00	0.00	0.00	14356568.82	871516.90	N 39 30	2.57 W 107 43 32.25
	11200.00	0.00	205.00	11200.00	0.00	0.00	0.00	0.00	14356568.82	871516.90	N 39 30	2.57 W 107 43 32.25
	11300.00	0.00	205.00	11300.00	0.00	0.00	0.00	0.00	14356568.82	871516.90	N 39 30	2.57 W 107 43 32.25
Horizontal Target	11400.00	0.00	205.00	11400.00	0.00	0.00	0.00	0.00	14356568.82	871516.90	N 39 30	2.57 W 107 43 32.25
	11500.00	0.00	205.00	11500.00	0.00	0.00	0.00	0.00	14356568.82	871516.90	N 39 30	2.57 W 107 43 32.25
	11548.00	0.00	205.00	11548.00	0.00	0.00	0.00	0.00	14356568.82	871516.90	N 39 30	2.57 W 107 43 32.25
	11600.00	3.64	205.00	11599.97	1.65	-1.50	-0.70	7.00	14356567.32	871516.20	N 39 30	2.55 W 107 43 32.25
Horizontal Target	11700.00	10.64	205.00	11699.13	14.07	-12.75	-5.95	7.00	14356556.06	871510.95	N 39 30	2.44 W 107 43 32.32
	11800.00	17.64	205.00	11796.04	38.49	-34.88	-16.27	7.00	14356533.93	871500.63	N 39 30	2.22 W 107 43 32.44
	11900.00	24.64	205.00	11889.25	74.53	-67.55	-31.50	7.00	14356501.25	871485.39	N 39 30	1.89 W 107 43 32.62
	11992.53	31.12	205.00	11971.00	117.78	-106.74	-49.77	7.00	14356462.05	871467.11	N 39 30	1.50 W 107 43 32.84
	12000.00	31.64	205.00	11977.37	121.66	-110.27	-51.42	7.00	14356458.52	871465.47	N 39 30	1.46 W 107 43 32.86
	12100.00	38.64	205.00	12059.10	179.19	-162.40	-75.73	7.00	14356406.38	871441.15	N 39 30	0.94 W 107 43 33.15
	12200.00	45.64	205.00	12133.20	246.24	-223.17	-104.07	7.00	14356345.59	871412.81	N 39 30	0.33 W 107 43 33.49
	12300.00	52.64	205.00	12198.58	321.83	-291.67	-136.01	7.00	14356277.07	871380.85	N 39 29	59.64 W 107 43 33.87
	12400.00	59.64	205.00	12254.26	404.81	-366.89	-171.08	7.00	14356201.83	871345.77	N 39 29	58.89 W 107 43 34.29
	12500.00	66.64	205.00	12299.41	493.97	-447.69	-208.76	7.00	14356121.01	871308.08	N 39 29	58.08 W 107 43 34.74
	12600.00	73.64	205.00	12333.36	587.97	-532.88	-248.49	7.00	14356035.80	871268.35	N 39 29	5

Comments	MD (ft)	Incl (°)	Azim Grid (°)	TVD (ft)	VSEC (ft)	NS (ft)	EW (ft)	DLS (°/100ft)	Northing (ftUS)	Easting (ftUS)	Latitude (N/S ° ' ")	Longitude (E/W ° ' ")
	13700.00	92.00	205.00	12336.76	1684.29	-1526.48	-711.81	0.00	14355041.92	870804.89	N 39 29 47.27	W 107 43 40.73
	13800.00	92.00	205.00	12333.27	1784.23	-1617.06	-754.05	0.00	14354951.32	870762.65	N 39 29 46.37	W 107 43 41.24
	13900.00	92.00	205.00	12329.78	1884.17	-1707.63	-796.28	0.00	14354860.72	870720.40	N 39 29 45.46	W 107 43 41.74
	14000.00	92.00	205.00	12326.29	1984.11	-1798.21	-838.52	0.00	14354770.12	870678.15	N 39 29 44.55	W 107 43 42.24
	14100.00	92.00	205.00	12322.80	2084.04	-1888.79	-880.76	0.00	14354679.52	870635.90	N 39 29 43.64	W 107 43 42.75
	14200.00	92.00	205.00	12319.31	2183.98	-1979.36	-922.99	0.00	14354588.92	870593.66	N 39 29 42.74	W 107 43 43.25
	14300.00	92.00	205.00	12315.82	2283.92	-2069.94	-965.23	0.00	14354498.32	870551.41	N 39 29 41.83	W 107 43 43.75
	14400.00	92.00	205.00	12312.33	2383.86	-2160.51	-1007.46	0.00	14354407.72	870509.16	N 39 29 40.92	W 107 43 44.26
	14500.00	92.00	205.00	12308.84	2483.80	-2251.09	-1049.70	0.00	14354317.11	870466.91	N 39 29 40.01	W 107 43 44.76
	14600.00	92.00	205.00	12305.35	2583.74	-2341.66	-1091.94	0.00	14354226.51	870424.66	N 39 29 39.11	W 107 43 45.26
	14700.00	92.00	205.00	12301.86	2683.68	-2432.24	-1134.17	0.00	14354135.91	870382.42	N 39 29 38.20	W 107 43 45.77
	14800.00	92.00	205.00	12298.37	2783.62	-2522.81	-1176.41	0.00	14354045.31	870340.17	N 39 29 37.29	W 107 43 46.27
	14900.00	92.00	205.00	12294.88	2883.56	-2613.39	-1218.64	0.00	14353954.71	870297.92	N 39 29 36.39	W 107 43 46.78
	15000.00	92.00	205.00	12291.39	2983.50	-2703.97	-1260.88	0.00	14353864.11	870255.67	N 39 29 35.48	W 107 43 47.28
	15100.00	92.00	205.00	12287.90	3083.44	-2794.54	-1303.12	0.00	14353773.51	870213.43	N 39 29 34.57	W 107 43 47.78
	15200.00	92.00	205.00	12284.41	3183.37	-2885.12	-1345.35	0.00	14353682.91	870171.18	N 39 29 33.66	W 107 43 48.29
	15300.00	92.00	205.00	12280.92	3283.31	-2975.69	-1387.59	0.00	14353592.31	870128.93	N 39 29 32.75	W 107 43 48.79
	15400.00	92.00	205.00	12277.43	3383.25	-3066.27	-1429.82	0.00	14353501.71	870086.68	N 39 29 31.85	W 107 43 49.29
	15500.00	92.00	205.00	12273.94	3483.19	-3156.84	-1472.06	0.00	14353411.11	870044.44	N 39 29 30.94	W 107 43 49.80
	15600.00	92.00	205.00	12270.45	3583.13	-3247.42	-1514.30	0.00	14353320.51	870002.19	N 39 29 30.03	W 107 43 50.30
	15700.00	92.00	205.00	12266.96	3683.07	-3337.99	-1556.53	0.00	14353229.91	869959.94	N 39 29 29.13	W 107 43 50.80
	15800.00	92.00	205.00	12263.47	3783.01	-3428.57	-1598.77	0.00	14353139.31	869917.69	N 39 29 28.22	W 107 43 51.31
	15900.00	92.00	205.00	12259.98	3882.95	-3519.15	-1641.00	0.00	14353048.71	869875.45	N 39 29 27.31	W 107 43 51.81
	16000.00	92.00	205.00	12256.49	3982.89	-3609.72	-1683.24	0.00	14352958.11	869833.20	N 39 29 26.40	W 107 43 52.31
	16100.00	92.00	205.00	12253.00	4082.83	-3700.30	-1725.48	0.00	14352867.51	869790.95	N 39 29 25.50	W 107 43 52.82
	16200.00	92.00	205.00	12249.51	4182.76	-3790.87	-1767.71	0.00	14352776.91	869748.70	N 39 29 24.59	W 107 43 53.32
	16300.00	92.00	205.00	12246.02	4282.70	-3881.45	-1809.95	0.00	14352686.31	869706.45	N 39 29 23.68	W 107 43 53.82
	16400.00	92.00	205.00	12242.53	4382.64	-3972.02	-1852.19	0.00	14352595.71	869664.21	N 39 29 22.77	W 107 43 54.33
	16500.00	92.00	205.00	12239.04	4482.58	-4062.60	-1894.42	0.00	14352505.11	869621.96	N 39 29 21.87	W 107 43 54.83
	16600.00	92.00	205.00	12235.55	4582.52	-4153.17	-1936.66	0.00	14352414.51	869579.71	N 39 29 20.96	W 107 43 55.33
	16700.00	92.00	205.00	12232.07	4682.46	-4243.75	-1978.89	0.00	14352323.91	869537.46	N 39 29 20.05	W 107 43 55.84
	16800.00	92.00	205.00	12228.58	4782.40	-4334.33	-2021.13	0.00	14352233.31	869495.22	N 39 29 19.14	W 107 43 56.34
	16900.00	92.00	205.00	12225.09	4882.34	-4424.90	-2063.37	0.00	14352142.70	869452.97	N 39 29 18.24	W 107 43 56.84
	17000.00	92.00	205.00	12221.60	4982.28	-4515.48	-2105.60	0.00	14352052.10	869410.72	N 39 29 17.33	W 107 43 57.35
	17100.00	92.00	205.00	12218.11	5082.22	-4606.05	-2147.84	0.00	14351961.50	869368.47	N 39 29 16.42	W 107 43 57.85
	17200.00	92.00	205.00	12214.62	5182.16	-4696.63	-2190.07	0.00	14351870.90	869326.23	N 39 29 15.51	W 107 43 58.35
	17300.00	92.00	205.00	12211.13	5282.09	-4787.20	-2232.31	0.00	14351780.30	869283.98	N 39 29 14.61	W 107 43 58.86
	17400.00	92.00	205.00	12207.64	5382.03	-4877.78	-2274.55	0.00	14351689.70	869241.73	N 39 29 13.70	W 107 43 59.36
	17500.00	92.00	205.00	12204.15	5481.97	-4968.35	-2316.78	0.00	14351599.10	869199.48	N 39 29 12.79	W 107 43 59.86
	17600.00	92.00	205.00	12200.66	5581.91	-5058.93	-2359.02	0.00	14351508.50	869157.23	N 39 29 11.88	W 107 44 0.37
	17700.00	92.00	205.00	12197.17	5681.85	-5149.51	-2401.25	0.00	14351417.90	869114.99	N 39 29 10.98	W 107 44 0.87
	17800.00	92.00	205.00	12193.68	5781.79	-5240.08	-2443.49	0.00	14351327.30	869072.74	N 39 29 10.07	W 107 44 1.37
Benzel 36-6H PBHL/TD	17862.27	92.00	205.00	12191.50	5844.02	-5296.48	-2469.79	0.00	14351270.89	869046.43	N 39 29 9.51	W 107 44 1.69

Survey Type: Def Plan

Survey Error Model: ISCWSA Rev 0 \*\*\* 3-D 95.000% Confidence 2.7955 sigma

Survey Program:

MD From (ft)	MD To (ft)	EOU Freq (ft)	Survey Tool Type	Borehole / Survey
0.000	33.000	1/100.000	SLB_MWD-STD-Depth Only	Original Hole / Benzel 36-6H R1 ors 10-Feb-11
33.000	17862.266	1/100.000	SLB_MWD-STD	Original Hole / Benzel 36-6H R1 ors 10-Feb-11