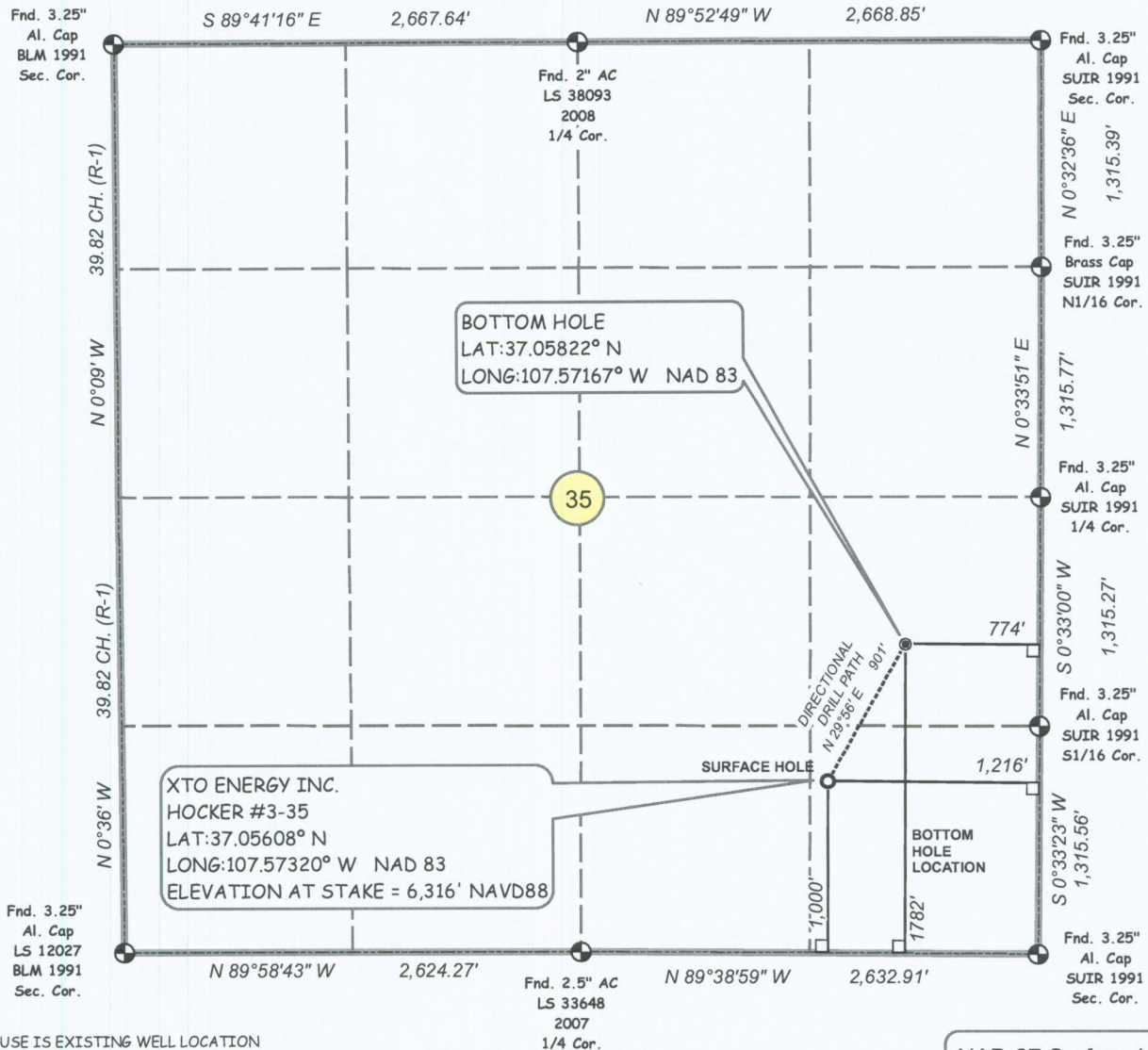


**XTO ENERGY INC.
HOCKER #3-35**

**SURFACE HOLE: 1000' FSL, 1,216' FEL
BOTTOM HOLE LOCATION: 1,782' FSL, 774' FEL,
SECTION 35, T-33-N, R-07-W, N.M.P.M.,
LA PLATA COUNTY, COLORADO
LAT:37.05608° N LONG:107.57320° W NAD 83
ELEVATION AT STAKE = 6,316' NAVD88**

Legend

- NEWBHL
- SURFACE LOCATION
- DRILL PATH
- 90° TIE
- ===== SECTION
- QUARTER; SIXTEENTH



NOTES:

1. SURFACE USE IS EXISTING WELL LOCATION AND AGRICULTURAL.
2. SEE ATTACHED ADDENDUM FOR IMPROVEMENTS, AND PROPERTY LINES WITHIN 200' OF BORE.
3. DATE OF SURVEY 9/15/08
4. BASIS OF ELEVATION = NAVD88 AS PREDICTED BY GEOID03.
5. GPS POSTIONS COLLECTED AT PDOP VALUE OF 6 OR LESS.
6. LOCATION OFFSETS TO SECTION LINE MEASURED AT 90° TO SECTION LINE.
7. (R-1) INDICATES DIMENSION FROM RECORD MEASUREMENT BLM PLAT AUG. 16, 1995.
- ALL OTHER DIMENSIONS FIELD MEASURED.

THIS IS TO CERTIFY THAT THE ABOVE PLAT WAS PREPARED FROM FIELD NOTES OF ACTUAL SURVEYS MADE BY ME OR UNDER MY DIRECT SUPERVISION AND THAT SAME ARE TRUE AND CORRECT TO THE BEST OF MY KNOWLEDGE AND BELIEF.

**DAVID ALEXANDER JOHNSON LICENSE NO. 33648 DATE
STATE OF COLORADO**



**NAD 27 Surface Location
LAT:37.05607° N
LONG:107.57259° W**

1 inch equals 1,000 feet



7/14/10 XTO031 SD.MXD

