

T6N, R92W, 6th. P.M.

QUICKSILVER RESOURCES, INC.

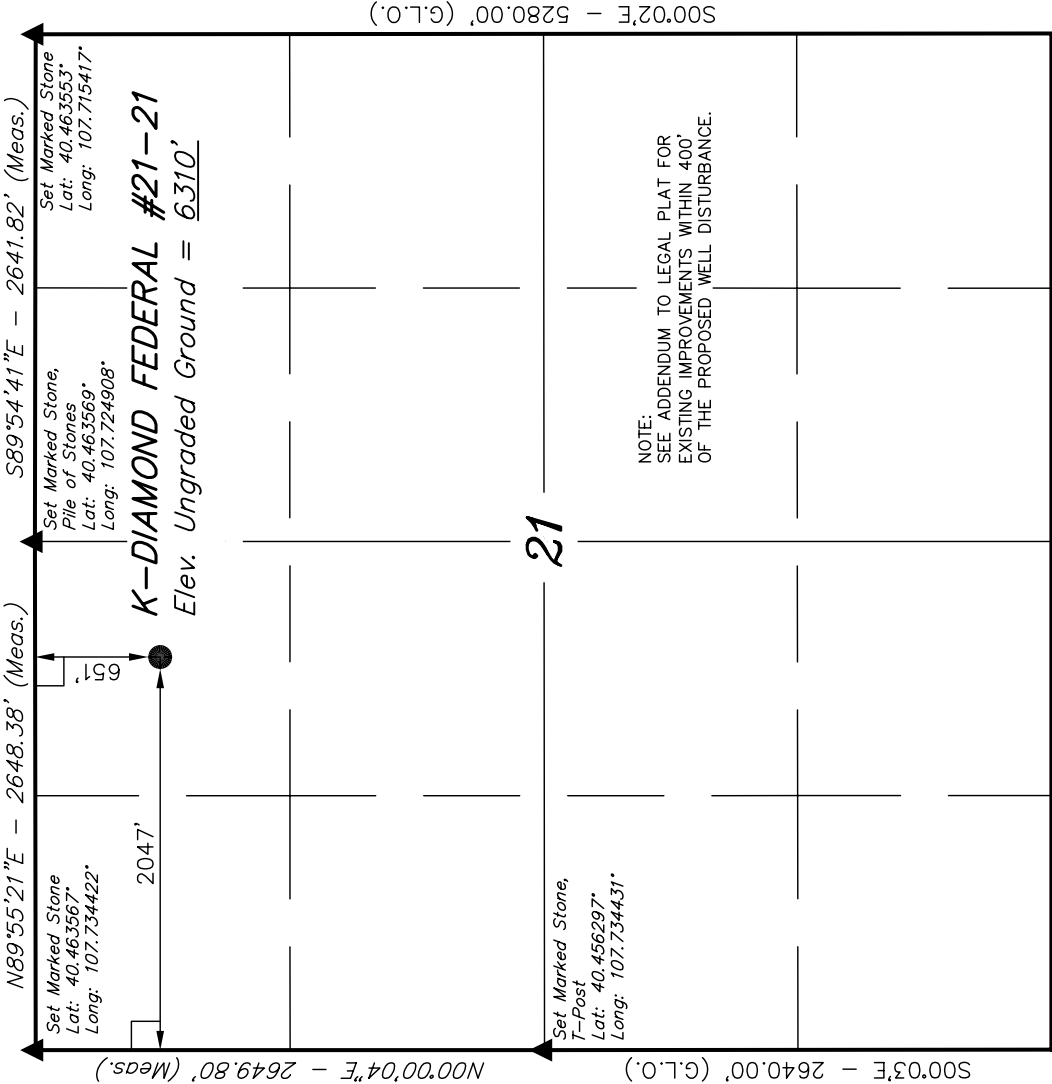
Well location, K-DIAMOND FEDERAL #21-21, located as shown in the NE 1/4 NW 1/4 of Section 21, T6N, R92W, 6th. P.M., Moffat County, Colorado.

BASIS OF ELEVATION

SPOT ELEVATION LOCATED AT THE NORTHEAST CORNER OF SECTION 10, T6N, R93W, 6th. P.M., TAKEN FROM THE HORSE GULCH QUADRANGLE, COLORADO, MOFFAT COUNTY, 7.5 MINUTE QUAD. (TOPOGRAPHIC MAP) PUBLISHED BY THE UNITED STATES DEPARTMENT OF THE INTERIOR, GEOLOGICAL SURVEY. SAID ELEVATION IS MARKED AS BEING 6246 FEET.

BASIS OF BEARINGS

BASIS OF BEARINGS IS A G.P.S. OBSERVATION.



WEST - 5285.28' (G.L.O.)

LEGEND:

└─ = 90° SYMBOL

● = PROPOSED WELL HEAD.

▲ = SECTION CORNERS LOCATED.

(NAD 83)
LATITUDE = 40°27'42.42" (40.461783)
LONGITUDE = 107°43'37.46" (107.727072)
(NAD 27)
LATITUDE = 40°27'42.52" (40.461811)
LONGITUDE = 107°43'35.21" (107.726447)

PDOP = 2.2

REV.: 04-27-11 J.I.

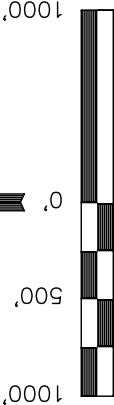
UINTAH ENGINEERING & LAND SURVEYING

85 SOUTH 200 EAST - VERNAL, UTAH 84078

(435) 789-1017

SCALE 1" = 1000'	DATE SURVEYED: 04-21-11	DATE DRAWN: 04-25-11
PARTY M.A. C.K. J.I.	REFERENCES G.L.O. PLAT	
WEATHER COOL	FILE	

QUICKSILVER RESOURCES, INC.



S C A L E

CERTIFICATE

THIS IS TO CERTIFY THAT THE ABOVE PLAT WAS PREPARED FROM FIELD NOTES OF ACTUAL SURVEYS MADE BY ME OR UNDER MY SUPERVISION AND THAT THE SAME ARE TRUE AND CORRECT TO THE BEST OF MY KNOWLEDGE AND BELIEF.

[Signature]
REGISTERED LAND SURVEYOR
REGISTRATION NO. 17492
STATE OF COLORADO
04-27-11