

SYNERGY RESOURCES CORPORATION  
20203 HIGHWAY 60  
PLATTEVILLE, Colorado

SRC TK 12-36D

**ENSIGN #33**

## **Post Job Summary**

### **Cement Production Casing**

Prepared for:	Don Libhart
Date Prepared:	3/23/2010
Version:	1

Service Supervisor: Lou Patterson

Submitted by: Wes Aaron

**HALLIBURTON**

# HALLIBURTON

## Service Supervisor Reports

### Job Log

Date/Time	Chart #	Activity Code	Pump Rate	Cum Vol	Pump		Pressure (psig)	Comments
03/17/2010 22:45		Arrive at Location from Service Center						
03/17/2010 23:00		Pre-Rig Up Safety Meeting						
03/17/2010 23:15		Rig-Up Equipment						
03/18/2010 01:05		Pre-Job Safety Meeting						
03/18/2010 01:20		Start Job						
03/18/2010 01:21		Test Lines						3000 PSI
03/18/2010 01:22		Pump Spacer	4	20			82.0	RIG WATER 20 BBL
03/18/2010 01:29		Pump Spacer	4	24			135.0	MUDFLUSH 24 BBL
03/18/2010 01:35		Pump Lead Cement	7	173			157.0	390 SKS 173 BBL VERSACEM @ 12 PPG
03/18/2010 01:58		Pump Tail Cement	7	75			182.0	215 SKS 75 BBL VERSACEM @ 13 PPG
03/18/2010 02:09		Clean Lines						
03/18/2010 02:11		Drop Top Plug						HES TOP PLUG 4.5
03/18/2010 02:14		Pump Displacement	8.5	122			1000.0	122 BBL CLAYFIX WATER
03/18/2010 02:32		Bump Plug	3	122			1887.0	500 OVER
03/18/2010 02:36		End Job						
03/18/2010 02:45		Post-Job Safety Meeting (Pre Rig-Down)						
03/18/2010 02:50		Rig-Down Equipment						
03/18/2010 03:25		Depart Location Safety Meeting						
03/18/2010 03:30		Depart Location for Service Center or Other Site						THANKS LOU AND CREW

*The Road to Excellence Starts with Safety*

<b>Sold To #:</b> 359915		<b>Ship To #:</b> 2774171		<b>Quote #:</b>		<b>Sales Order #:</b> 7243440	
<b>Customer:</b> SYNERGY RESOURCES CORPORATION				<b>Customer Rep:</b>			
<b>Well Name:</b> SRC TK			<b>Well #:</b> 12-36D			<b>API/UWI #:</b>	
<b>Field:</b> WATTENBERG		<b>City (SAP):</b> EATON		<b>County/Parish:</b> Weld		<b>State:</b> Colorado	
<b>Contractor:</b> ENSIGN			<b>Rig/Platform Name/Num:</b> # 33				
<b>Job Purpose:</b> Cement Production Casing							
<b>Well Type:</b> Development Well			<b>Job Type:</b> Cement Production Casing				
<b>Sales Person:</b> FLING, MATTHEW			<b>Srvc Supervisor:</b> PATTERSON, HARRY			<b>MBU ID Emp #:</b> 359371	

## Job Personnel

HES Emp Name	Exp Hrs	Emp #	HES Emp Name	Exp Hrs	Emp #	HES Emp Name	Exp Hrs	Emp #
HUFF, DAVID Randall		468612	MILLER, GEOFFREY Alan		460232	PATTERSON, HARRY Louis		359371
VIGIL, NICHOLAS Joseph		443481						

## Equipment

HES Unit #	Distance-1 way	HES Unit #	Distance-1 way	HES Unit #	Distance-1 way	HES Unit #	Distance-1 way
10679720C	39 mile	10829456	39 mile	10857012C	39 mile	10866497C	39 mile
11019275	39 mile	11410470C	39 mile				

## Job Hours

Date	On Location Hours	Operating Hours	Date	On Location Hours	Operating Hours	Date	On Location Hours	Operating Hours
TOTAL	Total is the sum of each column separately							

## Job

Formation Name				Job Times			
Formation Depth (MD)	Top	Bottom		Date	Time	Time Zone	
Form Type	BHST			Called Out	17 - Mar - 2010	20:00	MST
Job depth MD	7848. ft	Job Depth TVD	7848. ft	On Location	17 - Mar - 2010	12:00	MST
Water Depth		Wk Ht Above Floor	5. ft	Job Started	18 - Mar - 2010	00:00	MST
Perforation Depth (MD)	From	To		Job Completed	18 - Mar - 2010	00:00	MST
				Departed Loc	18 - Mar - 2010	00:00	MST

## Well Data

Description	New / Used	Max pressure psig	Size in	ID in	Weight lbm/ft	Thread	Grade	Top MD ft	Bottom MD ft	Top TVD ft	Bottom TVD ft
Open Hole				7.875				550.	7760.	.	.
Production Casing	New		4.5	4.	11.6			.	7760.		
Surface Casing	Used		8.625	8.097	24.		J-55	.	550.	.	.

Sales/Rental/3<sup>rd</sup> Party (HES)

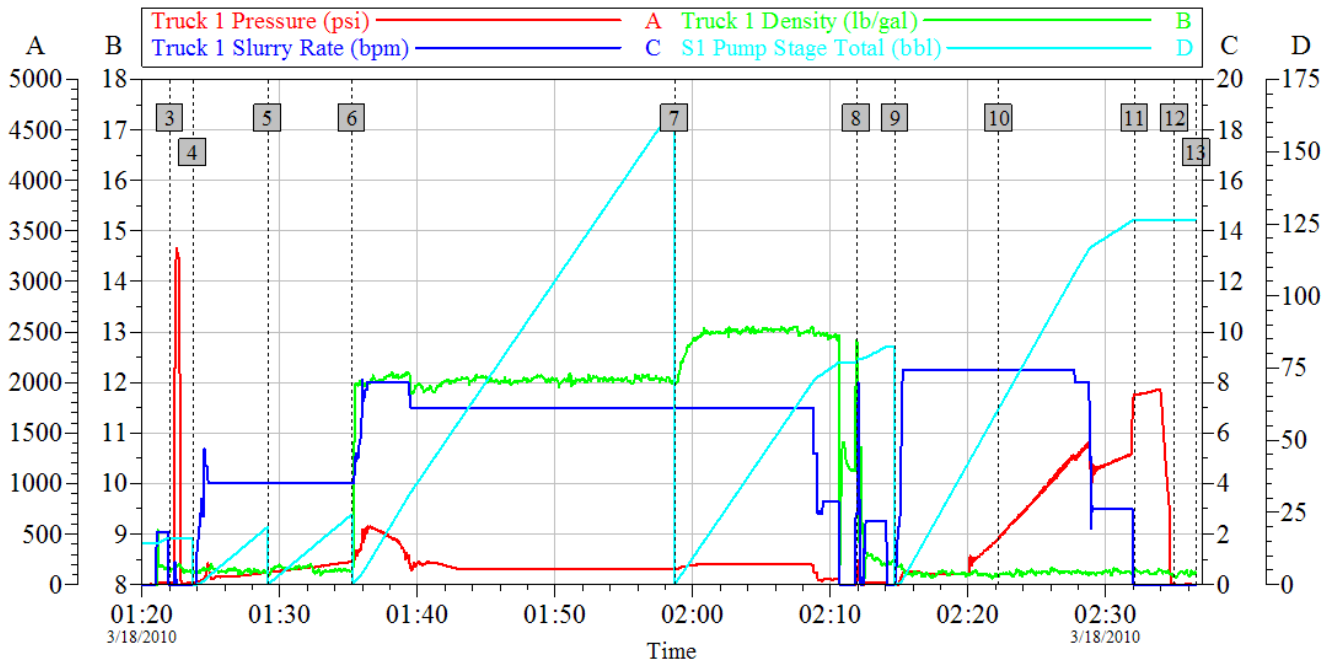
Description	Qty	Qty uom	Depth	Supplier
SHOE,FLT,4-1/2 8RD,2-3/4 SSII	1	EA		
CLR,FLT,4-1/2 8RD,9.5-13.5PPF,2-3/4	1	EA		
CENTRALIZER ASSY - API - 4-1/2 CSG X	30	EA		
CLAMP - LIMIT - 4-1/2 - HINGED -	1	EA		
PLUG,CMTG,TOP,4 1/2,HWE,3.65 MIN/4.14 MA	1	EA		

Description										Qty	Qty uom	Depth	Supplier		
KIT,HALL WELD-A										1	EA				
Tools and Accessories															
Type	Size	Qty	Make	Depth	Type	Size	Qty	Make	Depth	Type	Size	Qty	Make		
Guide Shoe					Packer					Top Plug					
Float Shoe					Bridge Plug					Bottom Plug					
Float Collar					Retainer					SSR plug set					
Insert Float										Plug Container					
Stage Tool										Centralizers					
Miscellaneous Materials															
Gelling Agt			Conc		Surfactant			Conc		Acid Type			Qty	Conc	%
Treatment Fld			Conc		Inhibitor			Conc		Sand Type			Size	Qty	
Fluid Data															
Stage/Plug #: 1															
Fluid #	Stage Type		Fluid Name				Qty	Qty uom	Mixing Density lbm/gal	Yield ft3/sk	Mix Fluid Gal/sk	Rate bbl/min	Total Mix Fluid Gal/sk		
1	Water Spacer						20.00	bbl	8.33	.0	.0	5.0			
2	MUD FLUSH III		MUD FLUSH III - SBM (528788)				24.00	bbl	8.4	.0	.0	5.0			
3	Versacem 12#		VERSACEM (TM) SYSTEM (452010)				390.0	sacks	12.	2.49	13.91	5.0	13.91		
4	Versacem 13#		VERSACEM (TM) SYSTEM (452010)				215.0	sacks	13.	1.96	9.93	5.0	9.93		
5	DISPLACEMENT						122.00	bbl	.	.0	.0	.0			
Calculated Values			Pressures			Volumes									
Displacement			Shut In: Instant			Lost Returns			Cement Slurry			Pad			
Top Of Cement			5 Min			Cement Returns			Actual Displacement			Treatment			
Frac Gradient			15 Min			Spacers			Load and Breakdown			Total Job			
Rates															
Circulating			Mixing			Displacement			Avg. Job						
Cement Left In Pipe		Amount	17 ft	Reason	Shoe Joint										
Frac Ring # 1 @	ID		Frac ring # 2 @	ID		Frac Ring # 3 @	ID		Frac Ring # 4 @	ID					
The Information Stated Herein Is Correct					Customer Representative Signature										

# HALLIBURTON

## SYNERGY 3 18 10 LONGSTRING

SCR TK 12-36 D



### Global Event Log

3 Test Lines	01:22:01	4 Pump Spacer 1	01:23:42	5 Pump Spacer 2	01:29:08
6 Pump Lead Cement	01:35:14	7 Pump Tail Cement	01:58:41	8 Drop Plug	02:11:54
9 Pump Displacement	02:14:42	10 Displ Reached Cmmt	02:22:14	11 Bump Plug	02:32:06
12 End Job	02:35:00	13 Ending Job	02:36:35		

Customer:  
Well Description:

Job Date: 18-Mar-2010  
UWI:

Sales Order #: 7243440

OptiCem v6.4.2  
18-Mar-10 02:42