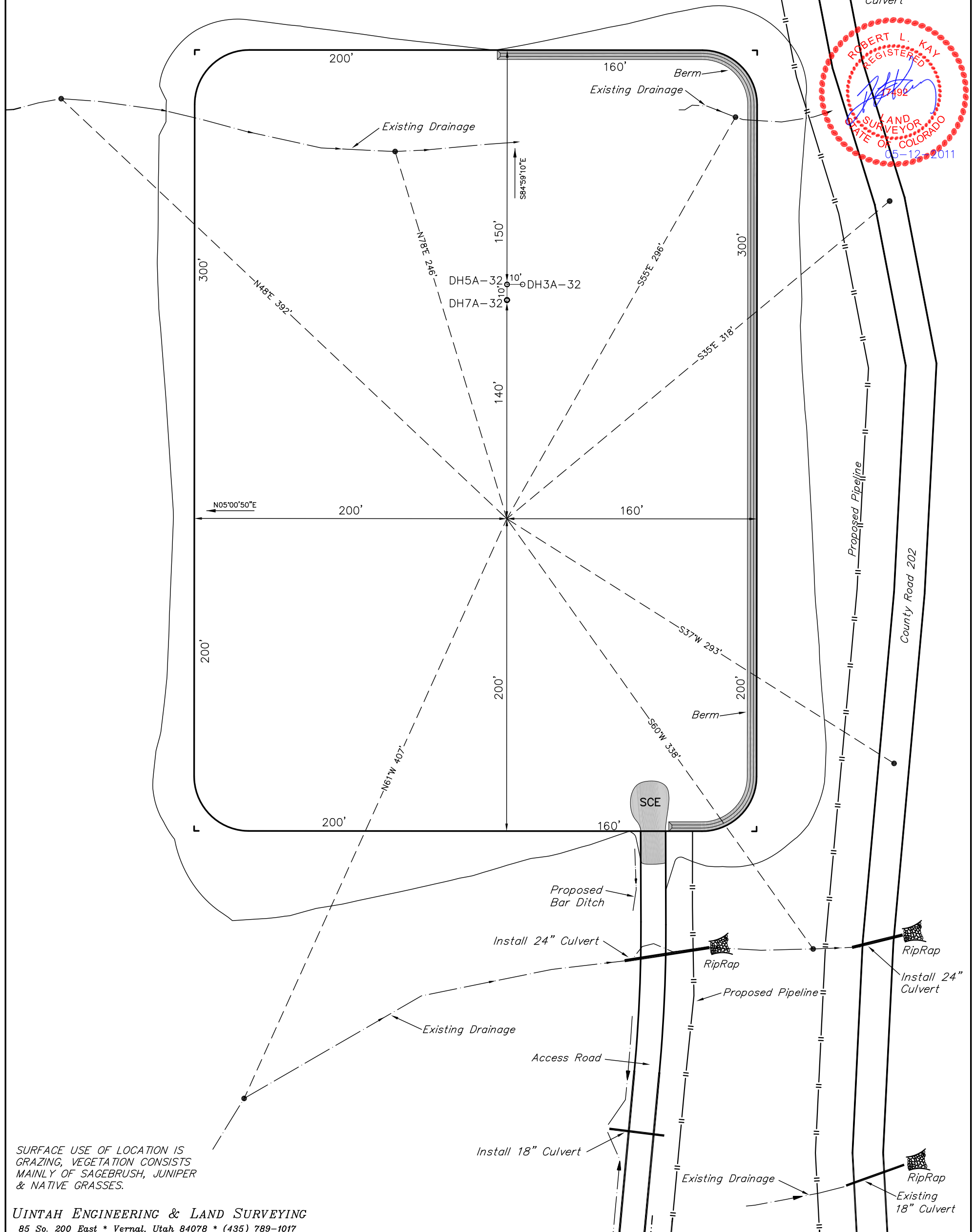


NE 1/4 NW 1/4

Revised: 05-12-11 D.R.B.



85 So. 200 East * Vernal, Utah 84078 * (435) 789-1017

Encana OIL & GAS (USA) INC.

WELL PAD INTERFERENCE PLAT

WELL PAD C08 799

SECTION 8, T7S, R99W, 6th P.M.

NE 1/4 NW 1/4

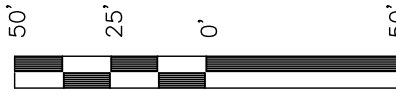
SCALE: 1" = 50'

DATE: 02-18-11

DRAWN BY: D.R.B.

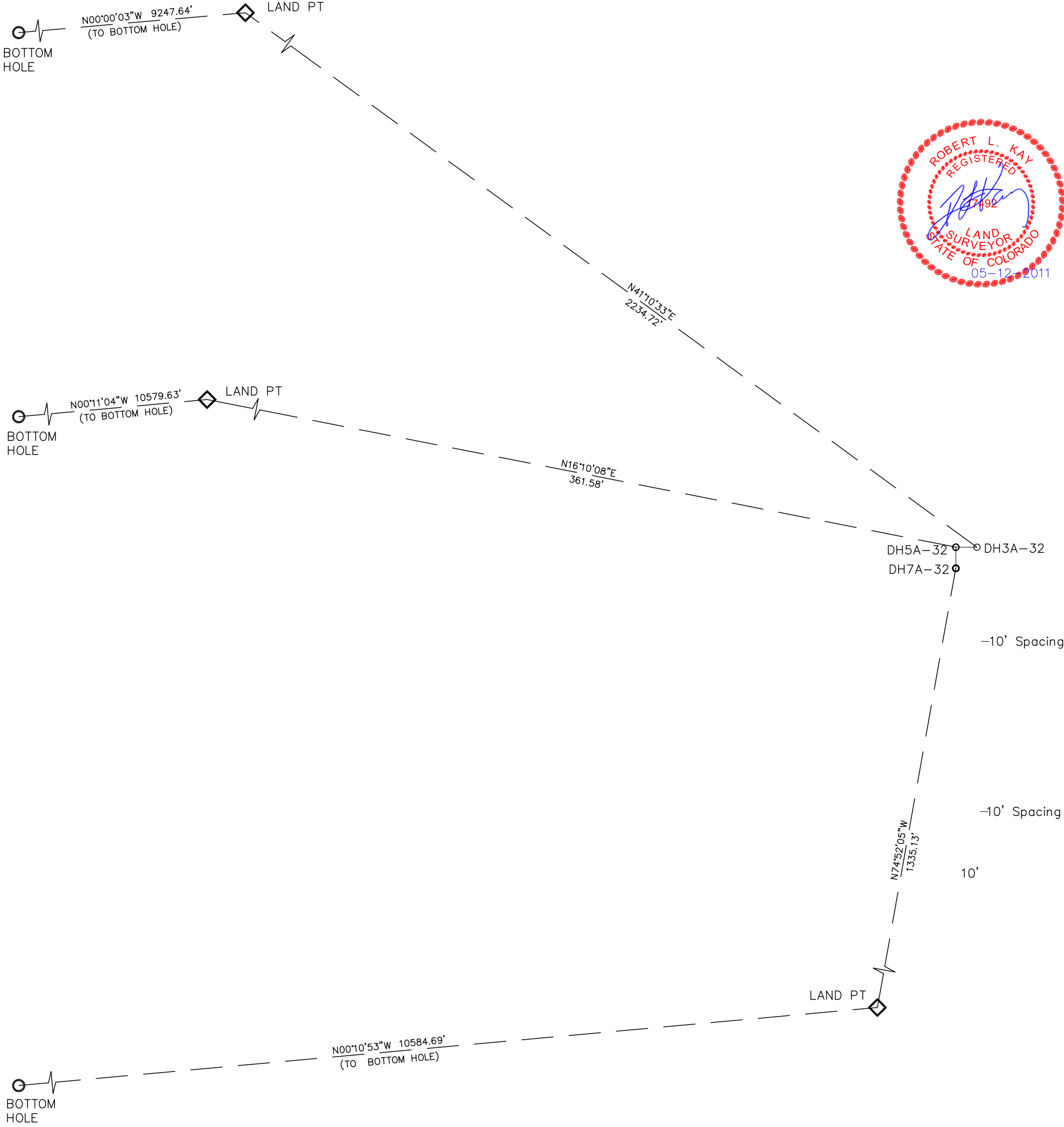
Revised: 03-02-11 D.R.B.

Revised: 05-12-11 D.R.B.



S C A L E

Sheet 2 of 11



Encana OIL & GAS (USA) INC.

CONSTRUCTION LAYOUT FOR

WELL PAD C08 799

SECTION 8, T7S, R99W, 6th P.M.

NE 1/4 NW 1/4

SCALE: 1" = 60'
DATE: 02-18-11
DRAWN BY: D.R.B.
Revised: 03-02-11 D.R.B.
Revised: 03-30-11 D.R.B.
Revised: 05-12-11 D.R.B.

LEGEND:

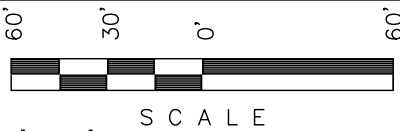
- 1 - OVERFLOW
- 2 - SEWER TANK
- 3 - LIFT STATION
- 4 - SEWER LINE
- 5 - WATER TANK
- 6 - FREEZER
- 7 - STORAGE
- 8 - GENERATOR
- 9 - FUEL
- 10 - TRANSFORMER

NOTE:

Compact in 6" lifts
and seed ECB infilled
with Flexterra.

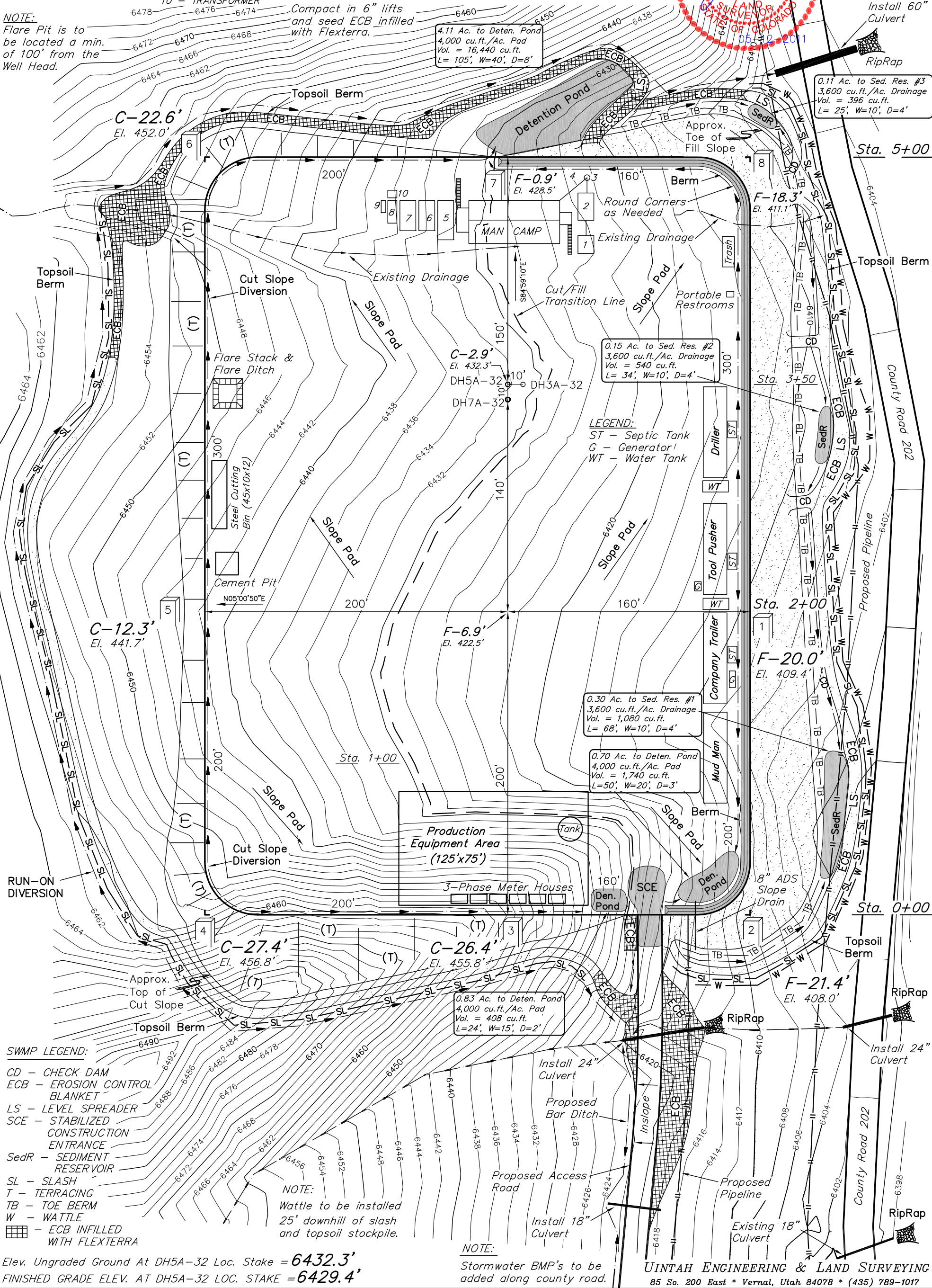
NOTE:

Off-site drainage areas were
determined using USGS topo
from The Saddle, Colorado
Quad map (1968).



Sheet 3 of 11

NOTE:
Flare Pit is to
be located a min.
of 100' from the
Well Head.



SWMP LEGEND:

- CD - CHECK DAM
- ECB - EROSION CONTROL BLANKET
- LS - LEVEL SPREADER
- SCE - STABILIZED CONSTRUCTION ENTRANCE
- SedR - SEDIMENT RESERVOIR
- SL - SLASH
- T - TERRACING
- TB - TOE BERM
- W - WATTLE
- ECB INFILLED WITH FLEXTERRA

Elev. Ungraded Ground At DH5A-32 Loc. Stake = 6432.3'
FINISHED GRADE ELEV. AT DH5A-32 LOC. STAKE = 6429.4'

NOTE:

Stormwater BMP's to be
added along county road.

UINTAH ENGINEERING & LAND SURVEYING
85 So. 200 East * Vernal, Utah 84078 * (435) 789-1017

Encana OIL & GAS (USA) INC.

PRE-CONSTRUCTION LAYOUT FOR

WELL PAD C08 799

SECTION 8, T7S, R99W, 6th P.M.

NE 1/4 NW 1/4



SCALE: 1" = 60'

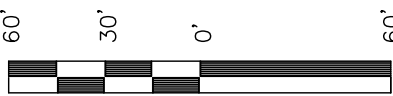
DATE: 02-18-11

DRAWN BY: D.R.B.

Revised: 03-02-11 D.R.B.

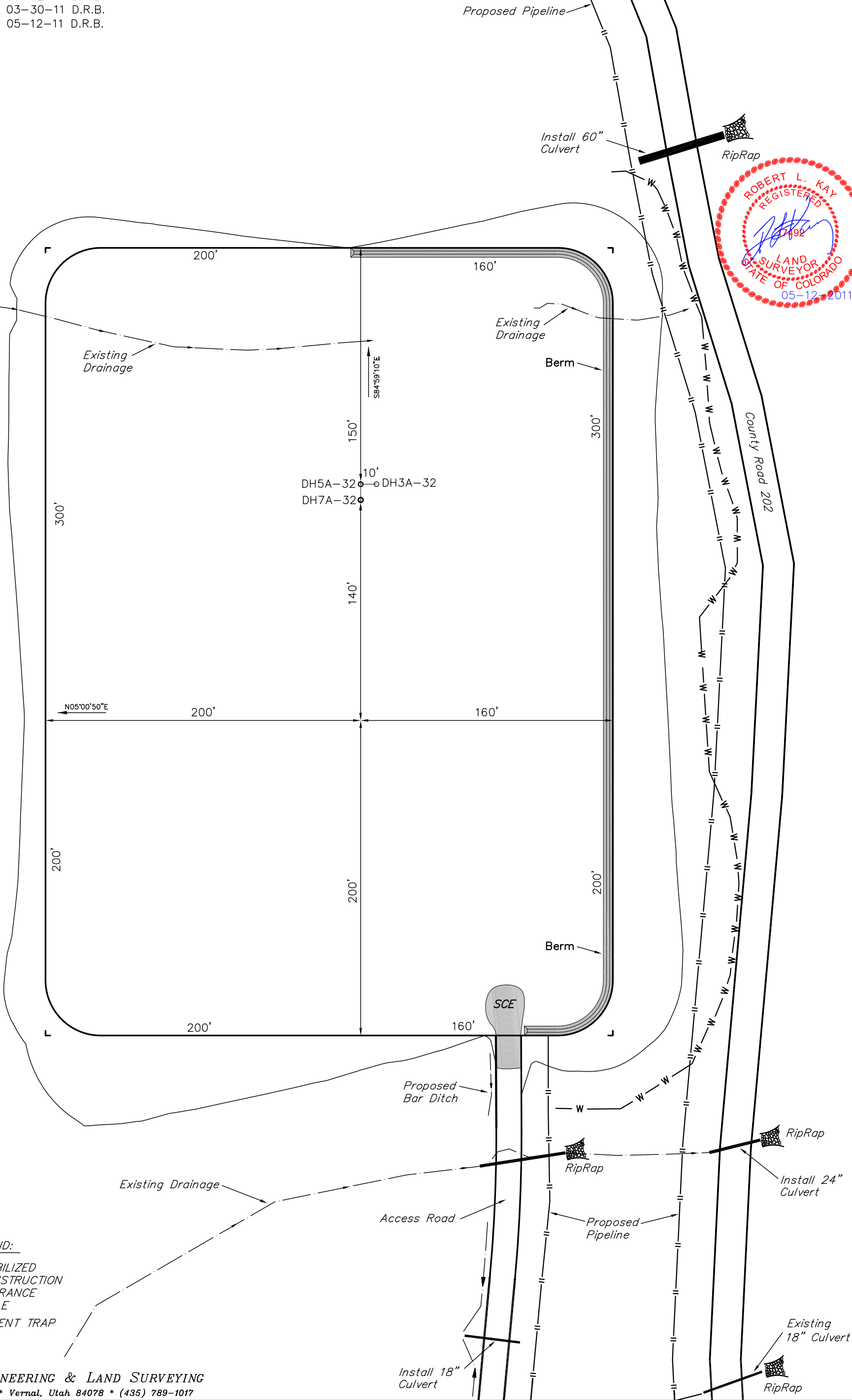
Revised: 03-30-11 D.R.B.

Revised: 05-12-11 D.R.B.



SCALE

Sheet 3a of 11



SWMP LEGEND:

SCE - STABILIZED
CONSTRUCTION
ENTRANCE

W - WATTLE

ST - SEDIMENT TRAP

Encana OIL & GAS (USA) INC.
CONSTRUCTION LAYOUT CROSS SECTION FOR

WELL PAD C08 799
SECTION 8, T7S, R99W, 6th P.M.
NE 1/4 NW 1/4

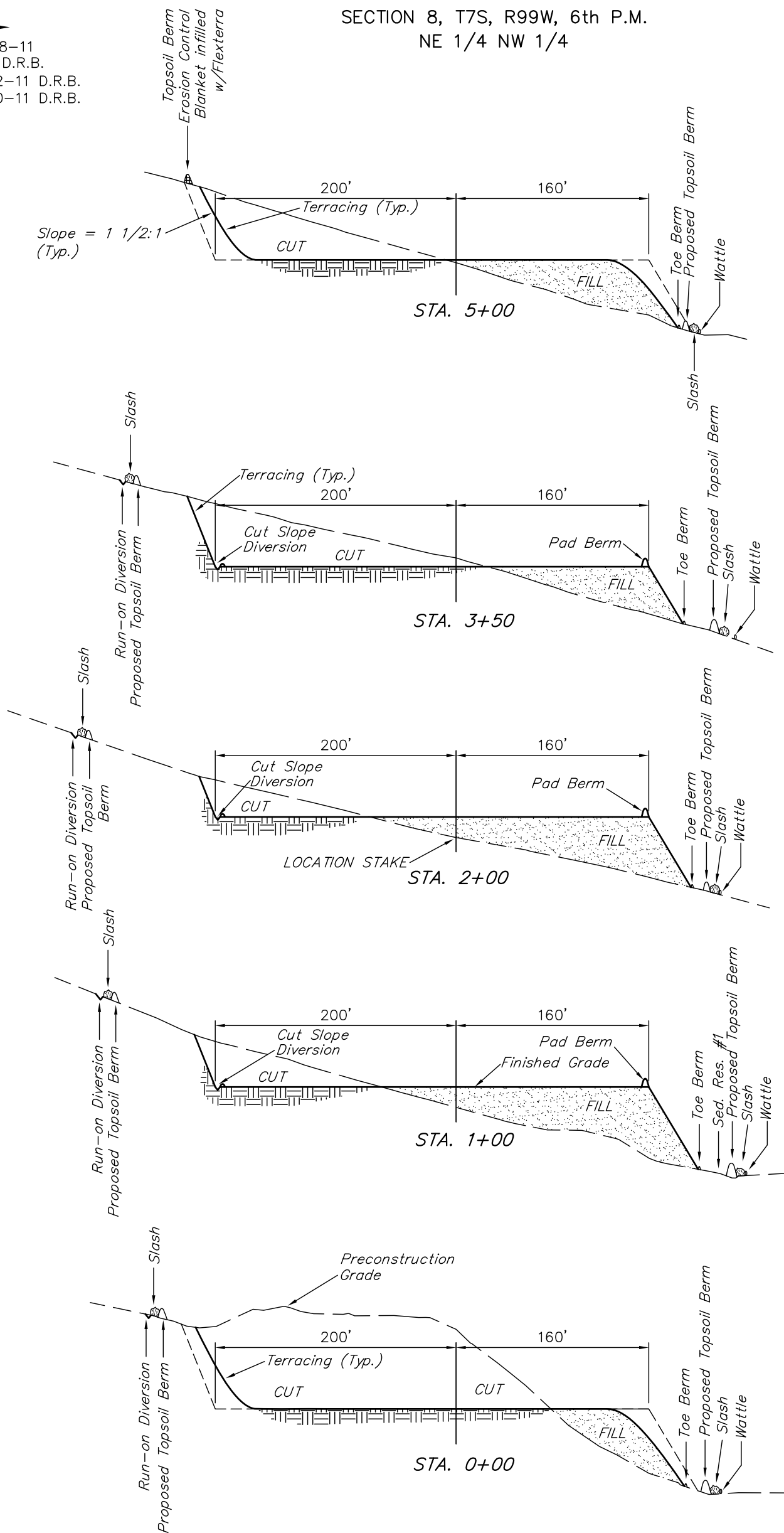
Sheet 4 of 11

1" = 40'
X-Section
Scale
1" = 100'

DATE: 02-18-11
DRAWN BY: D.R.B.
Revised: 03-02-11 D.R.B.
Revised: 03-30-11 D.R.B.

NOTE:

Per NRCS U.S. Soil Survey for
Douglas-Plateau Area, Parts of
Garfield and Mesa Counties, CO.
Site has Channery, Sandy Loam.



* NOTE:
FILL QUANTITY INCLUDES
5% FOR COMPACTION

APPROXIMATE YARDAGES

(6") Topsoil Stripping = 4,390 Cu. Yds.
Remaining Location = 41,520 Cu. Yds.
TOTAL CUT = 45,910 CU.YDS.
FILL = 41,520 CU.YDS.

EXCESS MATERIAL = 4,390 Cu. Yds.
Topsoil = 4,390 Cu. Yds.

EXCESS UNBALANCE = 0 Cu. Yds.
(After Interim Rehabilitation)

UINTAH ENGINEERING & LAND SURVEYING
85 So. 200 East * Vernal, Utah 84078 * (435) 789-1017

Encana OIL & GAS (USA) INC.

TYPICAL RIG LAYOUT FOR

WELL PAD C08 799

SECTION 8, T7S, R99W, 6th P.M.

NE 1/4 NW 1/4



SCALE: 1" = 50'

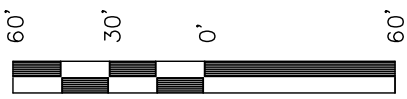
DATE: 02-18-11

DRAWN BY: D.R.B.

Revised: 03-02-11 D.R.B.

Revised: 03-30-11 D.R.B.

Revised: 05-12-11 D.R.B.



SCALE

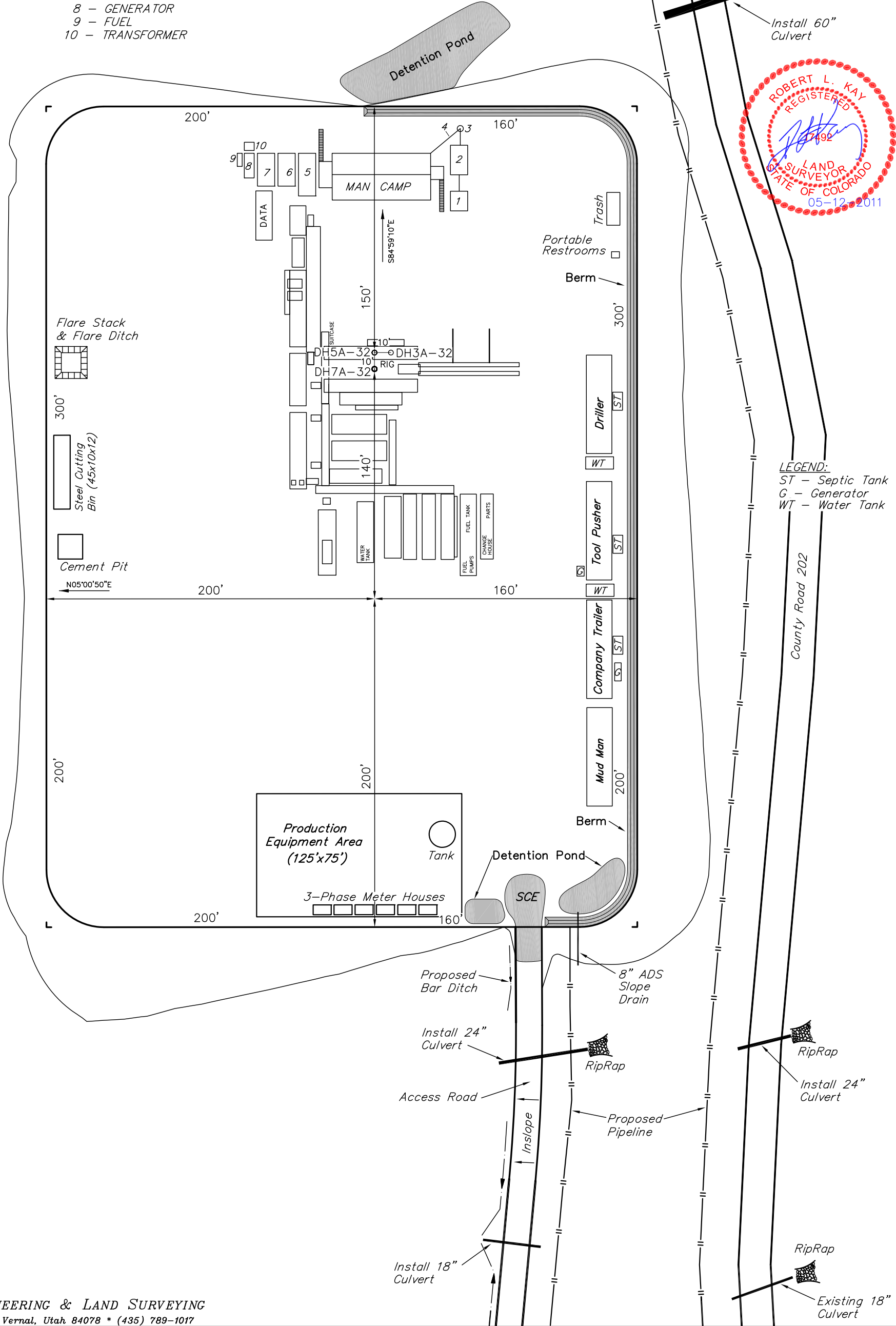
Sheet 5 of 11

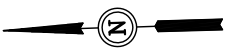
LEGEND:

- 1 - OVERFLOW
- 2 - SEWER TANK
- 3 - LIFT STATION
- 4 - SEWER LINE
- 5 - WATER TANK
- 6 - FREEZER
- 7 - STORAGE
- 8 - GENERATOR
- 9 - FUEL
- 10 - TRANSFORMER

NOTE:

Flare Pit is to be located a min. of 100' from the Well Head.





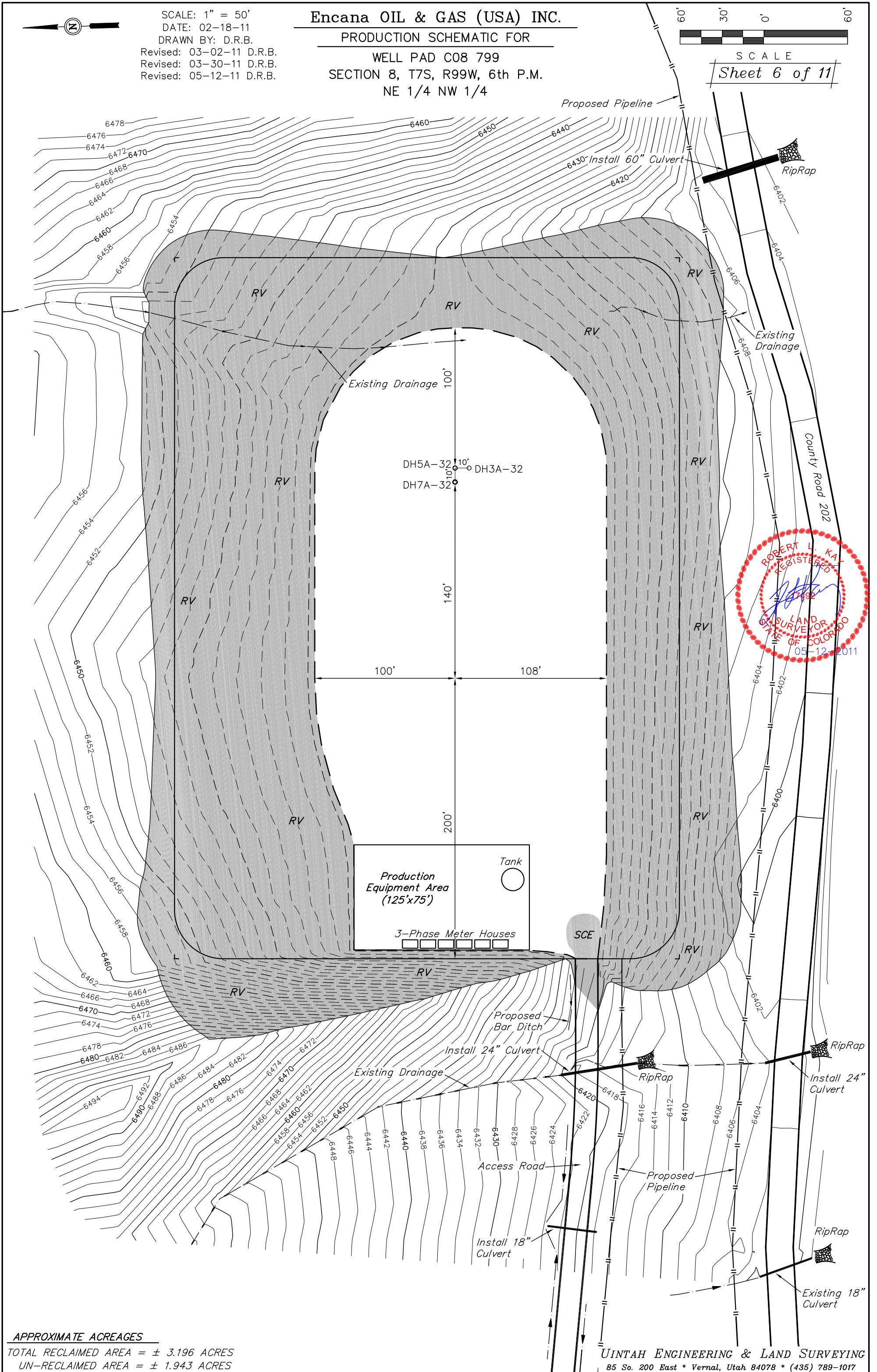
SCALE: 1" = 50'
DATE: 02-18-11
DRAWN BY: D.R.B.
Revised: 03-02-11 D.R.B.
Revised: 03-30-11 D.R.B.
Revised: 05-12-11 D.R.B.

Encana OIL & GAS (USA) INC.

PRODUCTION SCHEMATIC FOR
WELL PAD C08 799
SECTION 8, T7S, R99W, 6th P.M.
NE 1/4 NW 1/4



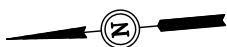
SCALE
Sheet 6 of 11



APPROXIMATE ACREAGES

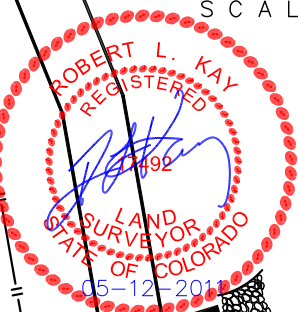
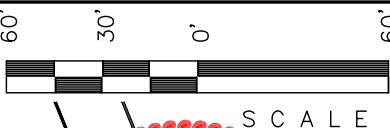
TOTAL RECLAIMED AREA = ± 3.196 ACRES
UN-RECLAIMED AREA = ± 1.943 ACRES

UINTAH ENGINEERING & LAND SURVEYING
85 So. 200 East * Vernal, Utah 84078 * (435) 789-1017



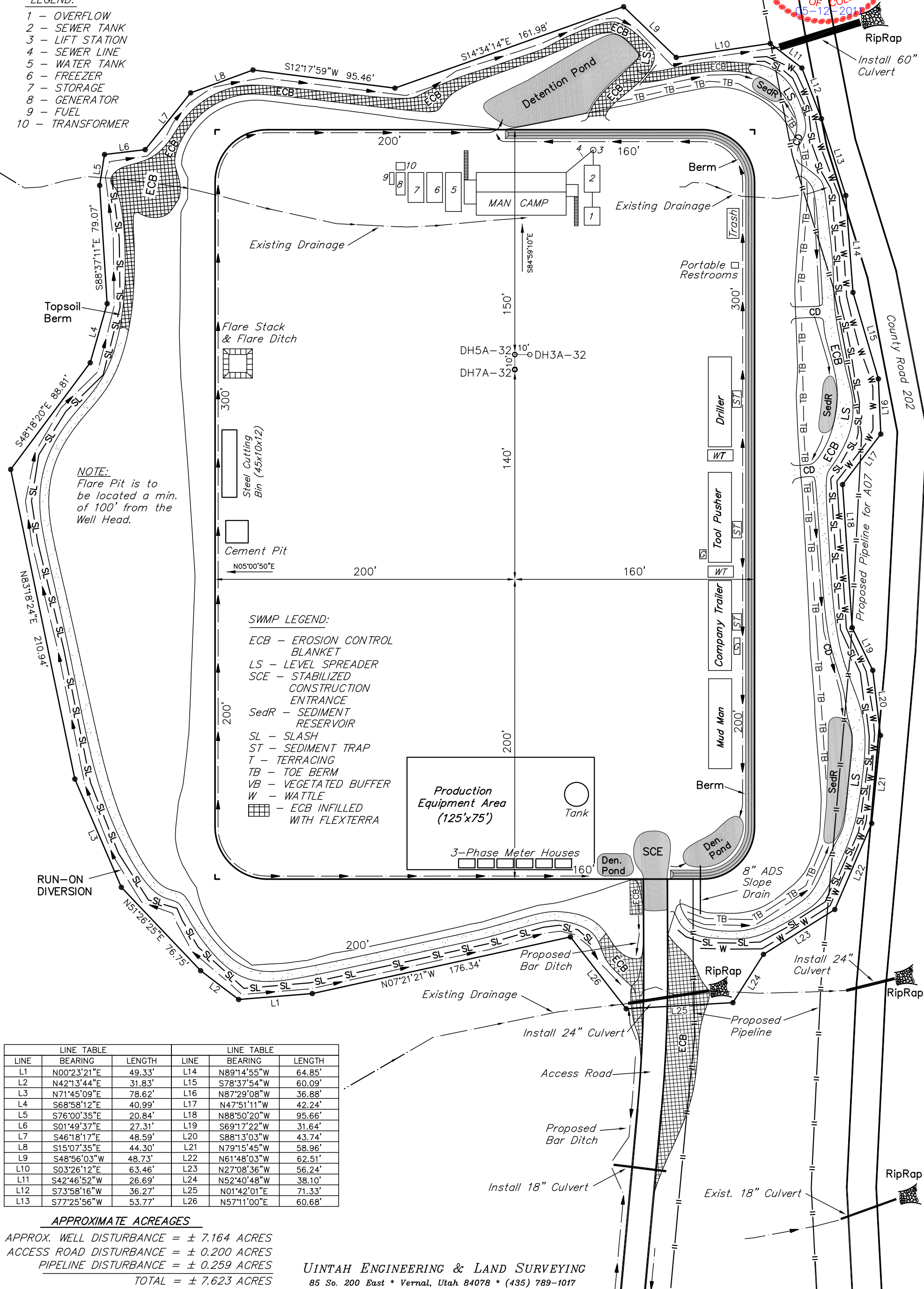
Encana OIL & GAS (USA) INC.
SURFACE DISTURBANCE AREA FOR
WELL PAD C08 799
SECTION 8, T7S, R99W, 6th P.M.
NE 1/4 NW 1/4

SCALE: 1" = 60'
DATE: 02-18-11
DRAWN BY: D.R.B.
Revised: 03-02-11 D.R.B.
Revised: 03-30-11 D.R.B.
Revised: 05-12-11 D.R.B.



LEGEND:

- 1 - OVERFLOW
- 2 - SEWER TANK
- 3 - LIFT STATION
- 4 - SEWER LINE
- 5 - WATER TANK
- 6 - FREEZER
- 7 - STORAGE
- 8 - GENERATOR
- 9 - FUEL
- 10 - TRANSFORMER



LINE TABLE			LINE TABLE		
LINE	BEARING	LENGTH	LINE	BEARING	LENGTH
L1	N00°23'21"E	49.33'	L14	N89°14'55"W	64.85'
L2	N42°13'44"E	31.83'	L15	S78°37'54"W	60.09'
L3	N71°45'09"E	78.62'	L16	N87°29'08"W	36.88'
L4	S68°58'12"E	40.99'	L17	N47°51'11"W	42.24'
L5	S76°00'35"E	20.84'	L18	N88°50'20"W	95.66'
L6	S01°49'37"E	27.31'	L19	S69°17'22"W	31.64'
L7	S46°18'17"E	48.59'	L20	S88°13'03"W	43.74'
L8	S15°07'35"E	44.30'	L21	N79°15'45"W	58.96'
L9	S48°56'03"W	48.73'	L22	N61°48'03"W	62.51'
L10	S03°26'12"E	63.46'	L23	N27°08'36"W	56.24'
L11	S42°46'52"W	26.69'	L24	N52°40'48"W	38.10'
L12	S73°58'16"W	36.27'	L25	N01°42'01"E	71.33'
L13	S77°25'56"W	53.77'	L26	N57°11'00"E	60.68'

APPROXIMATE ACREAGES

APPROX. WELL DISTURBANCE = ± 7.164 ACRES
ACCESS ROAD DISTURBANCE = ± 0.200 ACRES
PIPELINE DISTURBANCE = ± 0.259 ACRES
TOTAL = ± 7.623 ACRES