

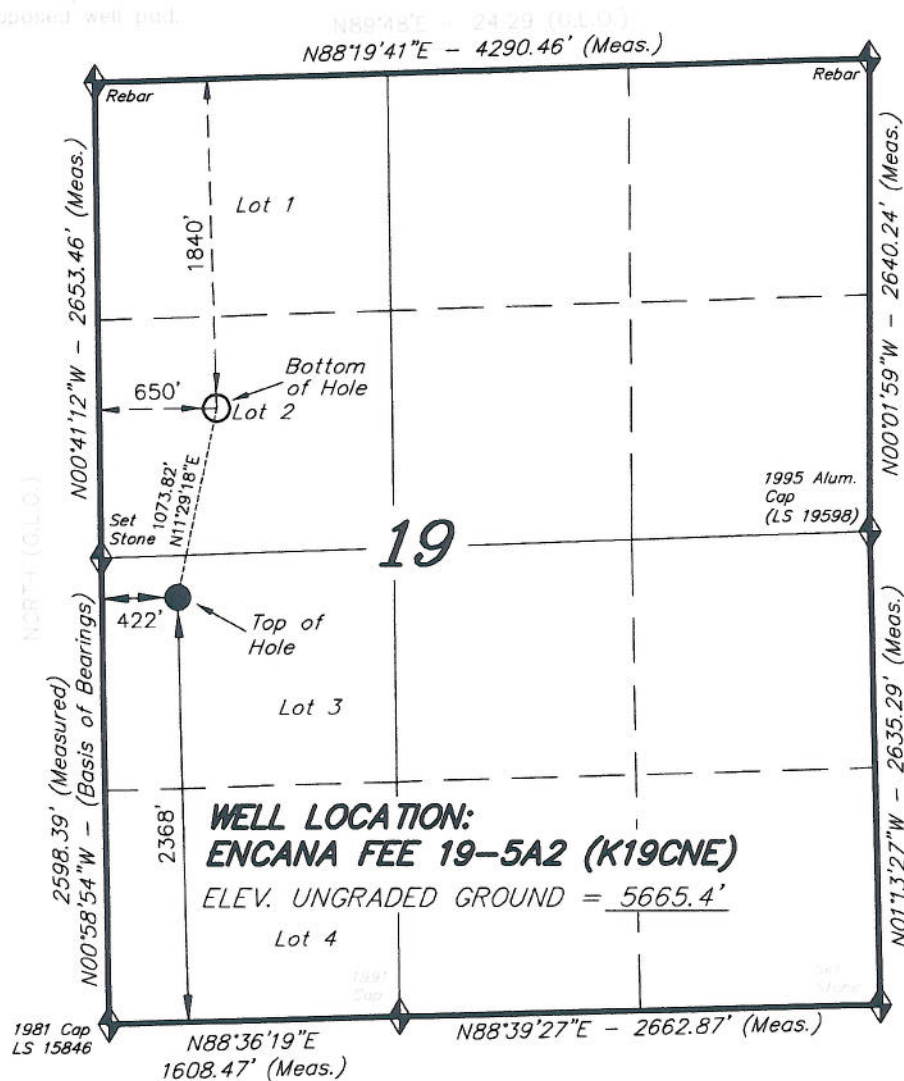
IMPROVEMENT NOTE:

See addendum to legal plat (sheet 2a)  
for visible improvements within 400' of  
the proposed well pad.

**T6S, R92W, 6th P.M.**

**ENCANA OIL & GAS (USA) INC**

WELL LOCATION, ENCANA FEE 19-5A2  
(K19CNE), LOCATED AS SHOWN IN LOT  
3 OF SECTION 19, T6S, R92W, 6th P.M.  
GARFIELD COUNTY, COLORADO.

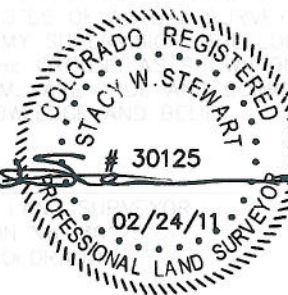


**WELL LOCATION:**  
**ENCANA FEE 19-5A2 (K19CNE)**

ELEV. UNGRADED GROUND = 5665.4'

**NOTES:**

1. Well footages are measured at right angles to the Section Lines.
2. Bearings are based on Global Positioning Satellite observations.
3. G.P.S. Operator:  
C.D. SLAUGH, (PDOP) = 2.4



**TRI STATE LAND SURVEYING & CONSULTING**

180 NORTH VERNAL AVE. - VERNAL, UTAH 84078  
(435) 781-2501

**NAD 83 (SURFACE LOCATION)**

LATITUDE = 39°30'40.75"  
(39.511319)

LONGITUDE = 107°42'48.37"  
(107.713437)



SECTION CORNERS LOCATED

Basis of elevation is the Rifle 2 Triangulation  
Station. 39°31'53.80" N Lat. & 107°41'04.78" W  
Long. (NAD 83). Elevation = 5323.1' (NAVD88).

SHEET

2i

OF 11